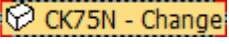



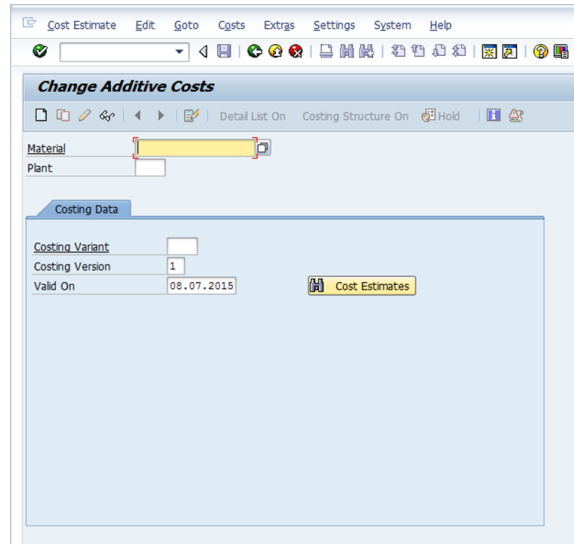
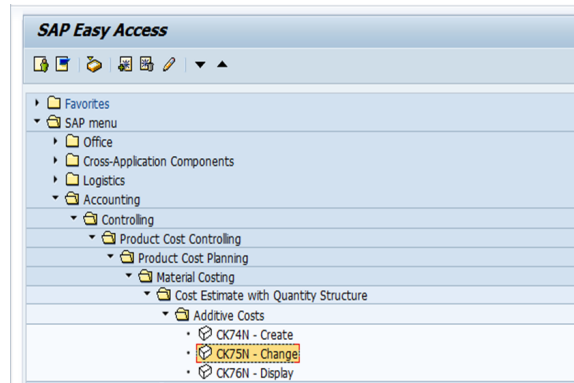
CK75N - Change Additive Costs

STEP 1

Start the transaction using the menu path or transaction code CK75N

Double-click 

 Change additive costs :
Initial Screen

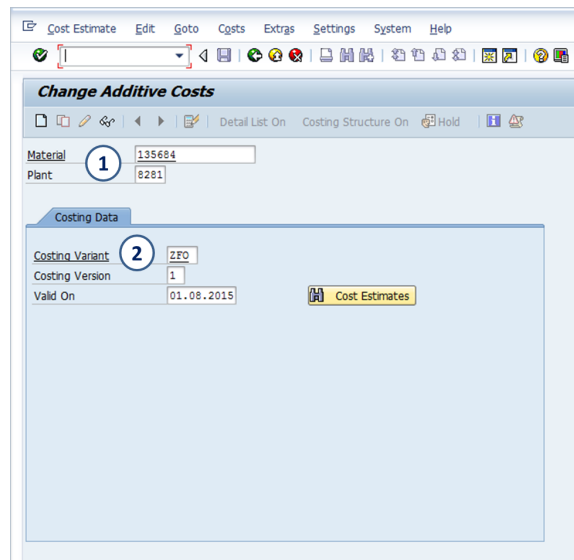


STEP 2

1. Enter the material code and the plant code
2. Enter the costing variant and the costing version 1


and

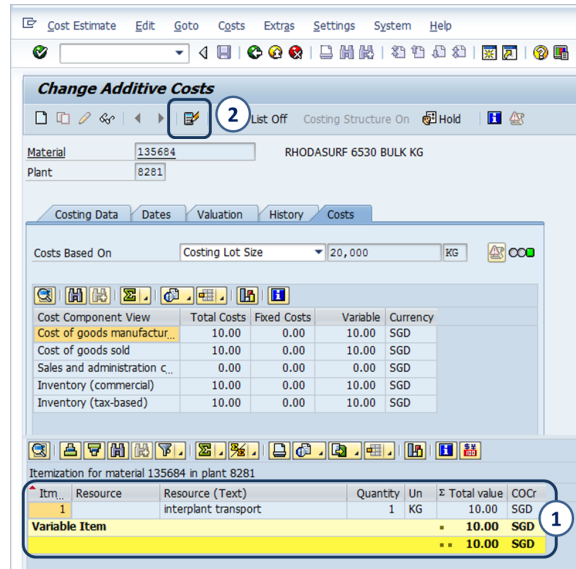




STEP 3

1. The current price is 10 SGD / kg


2. Click on  to change the price

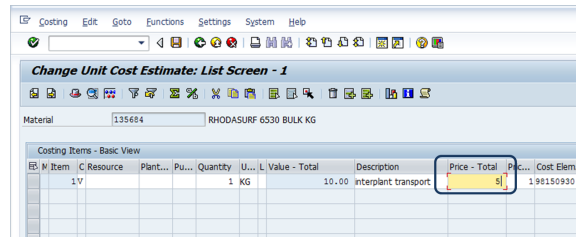


STEP 4


The following screen appears

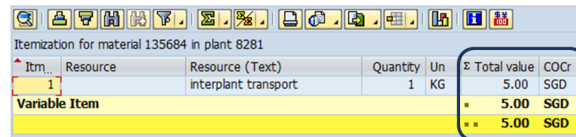
Update the additive cost in the column **Price – total** . It can be zero (0,00)


Save the new cost  and we return to the main screen



The cost is updated in the column **TOTAL value**

If it is correct, you must save it  and a message confirms the cost estimate is saved



 Cost estimate was saved for 01.08.2015

PERIODICITY

RESPONSABILITY

SPECIFIC PROCEDURE

After Standard Cost Estimate of Butachimie (ZFR9) is OK:

1: Transaction **CK40N**

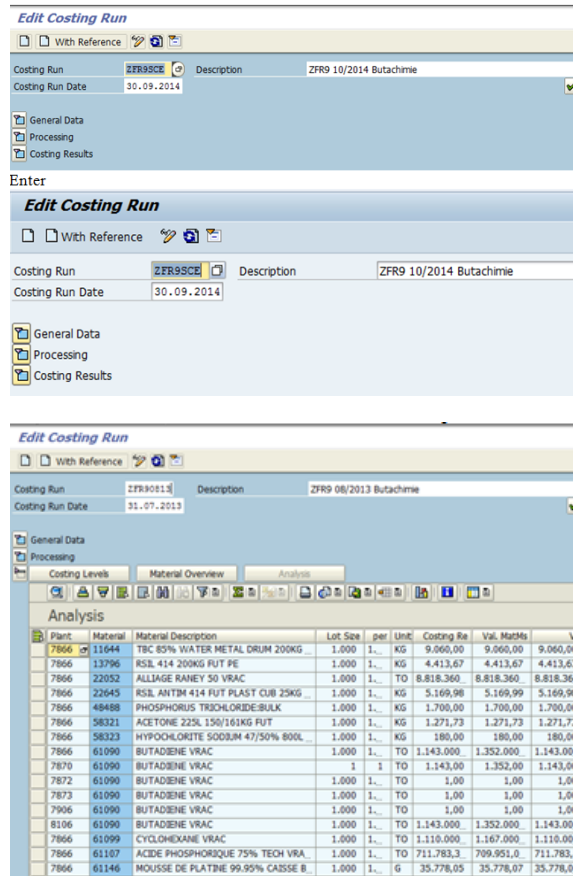
Check Costing Run = **ZFR9SCE**

This procedure should be executed before run CK40N under controllers request. For the specific case between ZFR3 and ZFR9 procedure should be executed on D-3, after the Standard Cost Estimate for company ZFR9 (BUTACHIMIE) is completed.

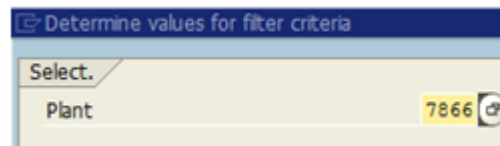
SBS-RtR-SC runs transaction CK75N to insert material additive costs. Rerun costing run (CK40N).

Check Costing Run Date = last day of the current month

2: Enter in transaction and click on "Results" and then on "Analysis"

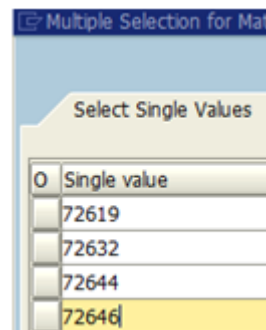


Click on Filter by plant 7866:

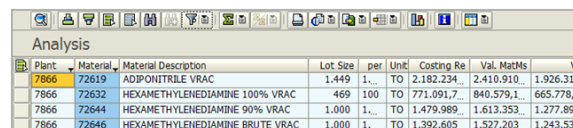


Filter by the materials below:

- 72619 ADN
- 72632 HMD 100%
- 72644 HMD 90%
- 72646 HMD Brut



3: Double click on each material:



For the materials (72619 and 72632) in which the lot size is different of 1000 TO select Cost Based on "User Entry" and insert 1000 TO in th quantity. Give an «Enter»

Material: 72619 ADIPONITRILE BULK
Plant: 7866

Costing Data Dates Qty Struct. Valuation History Costs

Costs Based On: User Entry 1.000 TO

Cost Component View	Total Costs	Fixed Costs	Variable	Currency
Cost of goods manufactur...	1.506.027...	176.615...	1.329.412...	EUR
Cost of goods sold	1.506.027...	176.615...	1.329.412...	EUR
Sales and administration c...	0,00	0,00	0,00	EUR
Inventory (commercial)	1.506.027...	176.615...	1.329.412...	EUR
Inventory (tax-based)	1.506.027...	176.615...	1.329.412...	EUR

Cost of goods manufactured

Click on 

Cost of goods manufactured

Cost Components for Material 72619 Plant 7866

Cost Comp.	Name of Cost Comp.	Overall	Fixed	Variable	Cry	Group	Name of Group
100	Raw Materials	1.018.002,60		1.018.002,60	EUR	10	VC
110	Tol Manufacturing	304,69		304,69	EUR	VC	VC
120	Utilities - VC	311.104,95		311.104,95	EUR	VC	VC
		1.329.412,24		1.329.412,24	EUR	10	
200	Labor Costs	29.832,22	29.832,22		EUR	20	FC
210	Supplies & Misc.				EUR	FC	FC
220	Maintenance	80.522,24	80.522,24		EUR	FC	FC
230	Overheads				EUR	FC	FC
240	Utilities - FC				EUR	FC	FC
		110.354,46	110.354,46		EUR	20	
300	Deprecation	66.261,04	66.261,04		EUR	30	DEP
310	N/A	66.261,04	66.261,04		EUR	30	DEP
		66.261,04	66.261,04		EUR	30	
		1.506.027,...	176.615,50	1.329.412,24	EUR		

4: Go to Transaction **CK75N** and insert the same material with plant 7852

Change Additive Costs

Material: 72619
Plant: 7852

Costing Data

Costing Variant: ZFO
Costing Version: 1
Valid On: 01.10.2014

Cost Estimates

Choose costing variant «ZFO» with costing version 1 valid on first day of the next month

Change Additive Costs


Material: 72619 ADIPONITRILE BULK
Plant: 7852

Costing Data Dates Valuation History Costs

Costs Based On: Costing Lot Size 1.000 TO

Cost Component View	Total Costs	Fixed Costs	Variable	Currency
Cost of goods manufactur...	1.393.342...	172.485...	1.220.857...	EUR
Cost of goods sold	1.393.342...	172.485...	1.220.857...	EUR
Sales and administration c...	0,00	0,00	0,00	EUR
Inventory (commercial)	1.393.342...	172.485...	1.220.857...	EUR
Inventory (tax-based)	1.393.342...	172.485...	1.220.857...	EUR

Cost of goods manufactured

Give an Enter » Click on 

5: Modify costing components based on CK40N amounts of ZFR9 costing run as shown.



On line Raw Materials. insert the amount found in **CK40N** less 1 € (is the commercial price in material master), which is already added.

The lines **Main d'œuvre / entretien / amortissement** normally are fixed for the entire year.

Modifier CCR unitaire : écran de synthèse - 1

Arche 17419 ADIPONITRILE BULK

ES - P Poste - C Ressource	Div./...	Or...	Quantité	U...	Valeur - totale	Description	Prx - total	Bas... Nat. comp... Gr... El... P	Prx - fixe
100			1,000,000		1,018,001.60	matieres	1,018,001.60	1,000 98150974	100
20			1,000,000		304.69	304.69	304.69	1,000 98150960	110
30			1,000,000		311,104.95	311,104.95	311,104.95	1,000 99436000	120
40			1,000,000		29,832.22	29,832.22	29,832.22	1,000 99430020	200
50			1,000,000		80,522.24	80,522.24	80,522.24	1,000 99430120	220
60			1,000,000		66,261.04	66,261.04	66,261.04	1,000 99438000	300

Cost of goods manufactured

Cost Comp.	Name of Cost Comp.	Q...	Overall	Fixed S...	Variable	Group	Name of Group S...
100	Raw Material		1,018,001.60		1,018,001.60	EUR	10
110	100 Manufacturing		304.69		304.69	EUR	VC
120	100 WIP Inv. VC		311,104.95		311,104.95	EUR	VC
			1,329,412.24		1,329,412.24	EUR	10
200	Labour Costs		29,832.22		29,832.22	EUR	FC
210	200 Supplies & Misc.		80,522.24		80,522.24	EUR	FC
220	200 Maintenance		80,522.24		80,522.24	EUR	FC
230	200 Overheads					EUR	FC
240	200 WIP Inv. FC		110,354.46		110,354.46	EUR	20
300	300 Depreciation		66,261.04		66,261.04	EUR	30
310	300 R/L		66,261.04		66,261.04	EUR	30
			1,506,805.55		1,506,805.55	EUR	

Ensure the price is the same as shown in **CK40N** – Total Price and Fixed Price must be equal.

Save » We return to the previous screen, Save again and check confirmation message of saving on 01.01.2007. Company ZFR3 costing run can now be rerun in transaction CK40N.

RERUN ZFR3 COSTING RUN

After the materials cost components have been modified, it is necessary to rerun the first 4 steps of the standard cost estimate costing run in transaction CK40N in order to update the materials costing result and the information is available to the controller.

The Costing Results of the materials in plants 7866 and 7852 should match.

Please note that for materials 72632 and 72619 the lot size is different, but if you compare with same costing lot size of 1.000 the results should match.

Prx - total	Bas...	Nat. comp...	Gr...	El...	P	Prx - fixe
1,018,001.60	1,000	98150974			100	
304.69	1,000	98150960			110	
311,104.95	1,000	99436000			120	
29,832.22	1,000	99430020			200	29,832.22
80,522.24	1,000	99430120			220	80,522.24
66,261.04	1,000	99438000			300	66,261.04

After the operation is complete:

Flow Step	Authorization	Parameter	Execute	Log	Status	Materials	Er...	Still Open
Selection		▶	▶	▶	▶	7580	0	
Struct. Explosion		▶	▶	▶	▶	7580	0	
Costing		▶	▶	▶	▶	7580	0	0
Analysis		▶	▶	▶	▶			

Plant	Material	Material Description	%Var. cos	Lot Size	per Unit	Costing Result
7866	72632	HEXAMETHYLENEDIAMINE 100% BULK	2,34-	469	100 TO	674.137,71
7866	72644	HEXAMETHYLENEDIAMINE 90 % BULK	2,34-	1.000	1.000 TO	1.294.190,28
7866	72619	ADIPONITRILE BULK	2,35-	1.465	1.000 TO	1.936.937,52
7866	72646	HEXAMETHYLENE DIAMINE CRUDE BULK	2,39-	1.000	1.000 TO	1.213.869,92

Plant	Material	Material Description	%Var. cos	Lot Size	per Unit	Costing Result
7852	72632	HEXAMETHYLENEDIAMINE 100% BULK	2,34-	1.000	1... TO	1.437.393,84
7852	72644	HEXAMETHYLENEDIAMINE 90 % BULK	2,34-	1.000	1... TO	1.294.190,28
7852	72619	ADIPONITRILE BULK	2,35-	1.000	1... TO	1.322.141,65
7852	72646	HEXAMETHYLENE DIAMINE CRUDE BULK	2,39-	1.000	1... TO	1.213.869,92

Workflow history

This view shows the 5 most recent entries. The complete workflow log is available from the 'Document Activity' menu item.

Jun 13, 2016	Actor	Type	Activity	Version
Published	Sylvain Michel Alexandre Pingont	State	changed state to Published at 2:02 pm (Space Initialization)	v6
Draft	Sylvain Michel Alexandre Pingont	State	gave <i>Approvers</i> approval at 2:02 pm	
		State	changed state to Draft at 2:02 pm	v6
From Nov 10, 2015 to Feb 25, 2016				
	Alexandra Lepercq , Romulo Roca and AN TUNES, Ana Lucia	Edit	multiple updates from Alexandra Lepercq , Romulo Roca and AN TUNES, Ana Lucia	



ANTUNES, Ana Lucia

[Edit](#)

created the page at 4:45 pm
