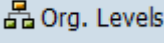

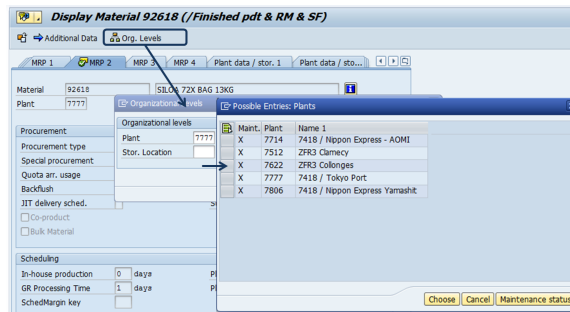


MM03 - Display Material

See different possibilities for this transaction:

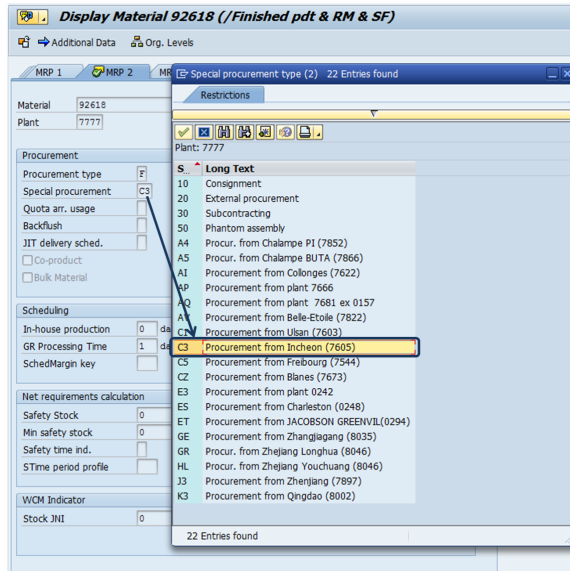
STEP 1

- Use transaction **MM03**
- Click  **Org. Levels** to display the organization level and click  beside the plant code
- The list of plants is displayed => The material code 92618 exists in 5 plants
- If the material 92618 is not produced in the plant 7777 is can be procured externally or in another plant in WP1 listed below :
 - 7512 ZFR3 Clamecy
 - 7622 ZFR3 Collonges
 - 7714 7418 / Nippon Express - AOMI
 - 7806 7418 / Nippon Express Yamashit



STEP 2

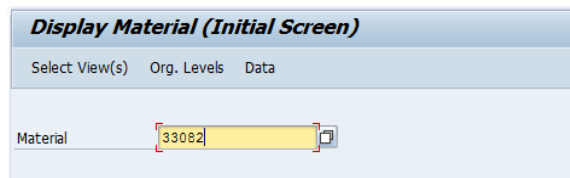
- The existing procurement code **C3** should be removed or replaced as it refers to a plant 7605 Incheon in which the material code 92618 was not created



STEP 1

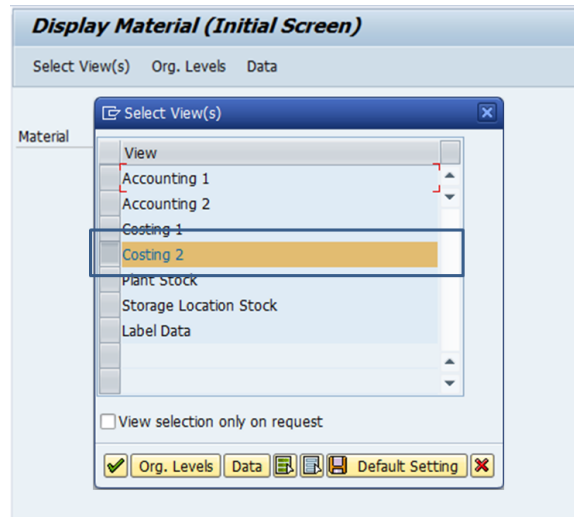
- Use transaction **MM03**
- Enter the material code and

Enter ↵



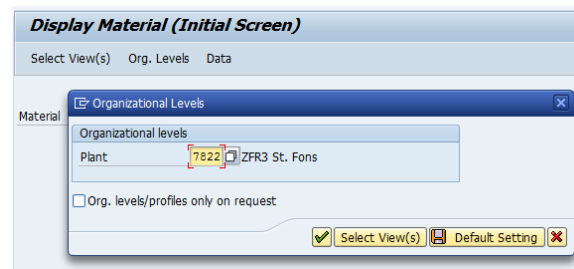
STEP 2

- Select the view "Costing 2"
and



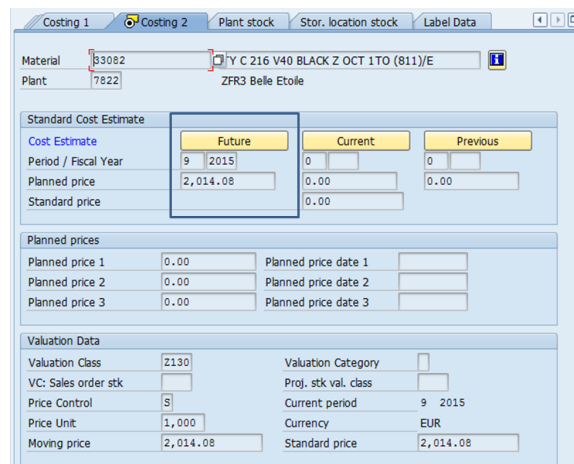
STEP 3

- Enter the plant code and



STEP 4

- When the cost estimate is marked, it becomes the Future Cost estimate



STEP 5

- When the cost estimate is released, it becomes the Current Cost estimate

Costing 1 Costing 2 Plant stock Stor. location stock Label Data

Material 93082 Y C 216 V40 BLACK Z OCT 1TO (811)/E
 Plant 7822 ZFR3 Belle Etoile

Standard Cost Estimate

Cost Estimate	Future	Current	Previous
Period / Fiscal Year	0	9 2015	0
Planned price	0.00	2,014.08	0.00
Standard price		2,014.08	

Planned prices

Planned price 1	0.00	Planned price date 1	
Planned price 2	0.00	Planned price date 2	
Planned price 3	0.00	Planned price date 3	

Valuation Data

Valuation Class	Z130	Valuation Category	
VC: Sales order stk		Proj. stk val. class	
Price Control	S	Current period	9 2015
Price Unit	1,000	Currency	EUR
Moving price	2,014.08	Standard price	2,014.08

STEP 1

- Use transaction **MM03**
- Enter the material code and

Enter ↵

Display Material (Initial Screen)

Select View(s) Org. Levels Data

Material 92618

STEP 2

- Select the view **"MRP2"** and

Enter ↵

Display Material (Initial Screen)

Select View(s) Select View(s)

Material

View

- MRP 1
- MRP 2**
- MRP 3
- MRP 4
- General Plant Data / Storage 1
- General Plant Data / Storage 2

View selection only on request

Org. Levels Data Default Setting

STEP 3

- Enter the plant code and

Enter ↵

Display Material (Initial Screen)

Select View(s) Org. Levels Data

Material

Organizational Levels

Organizational levels

Plant 7777 ZFR3 St. Fons

Stor. Location

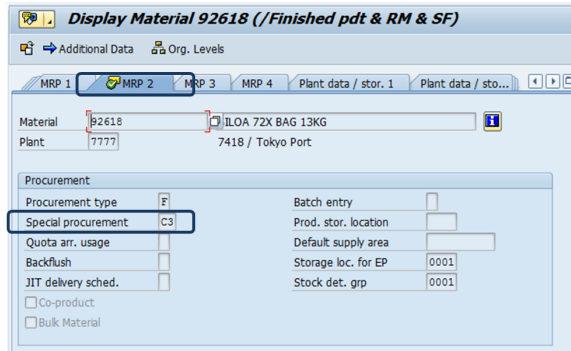
Valuation type

Org. levels/profiles only on request


Select View(s) Default Setting

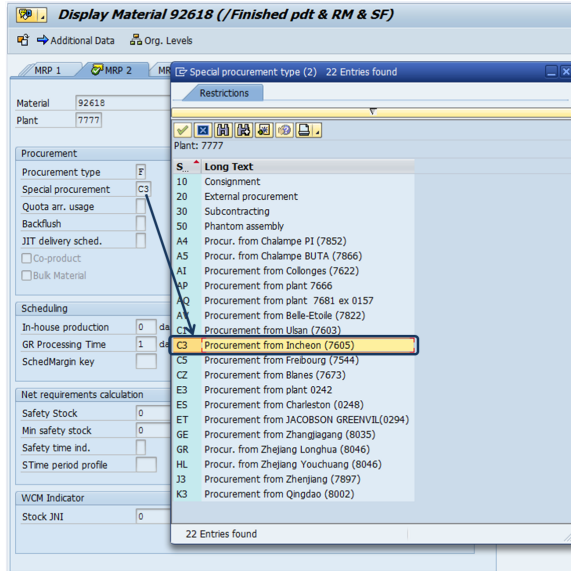
STEP 4

- The special procurement code is **C3**



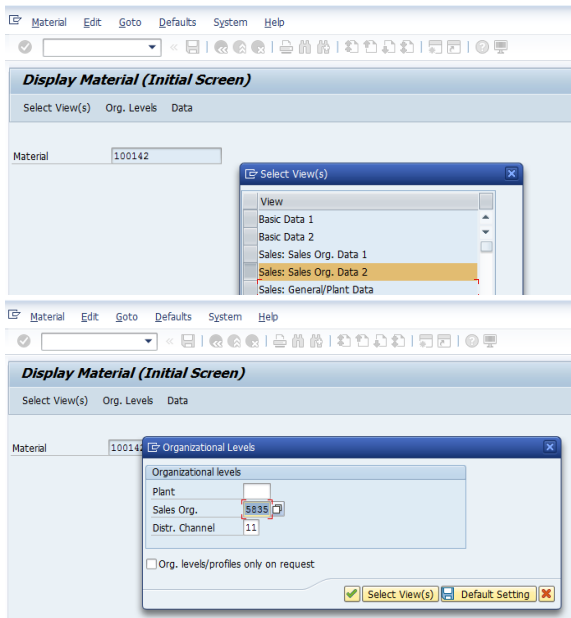
STEP 5

- Click on the code and  to have the description of the code
- The code **C3** means that the material 92618 comes from the plant **7605** Incheon



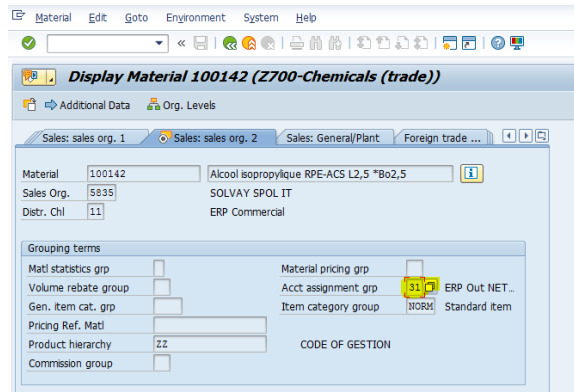
STEP 1

Display the material master data of any code with MM03 and select its sales organization)



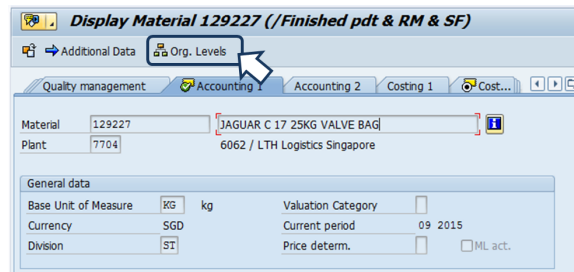
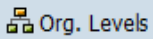
STEP 2

Click on the Sales org 2



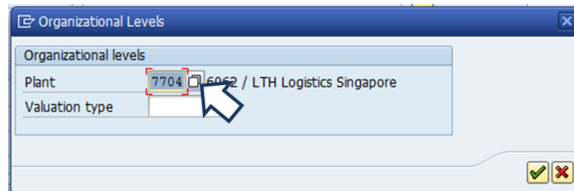
STEP 1

Display the material master data of any code with MM03 and click on



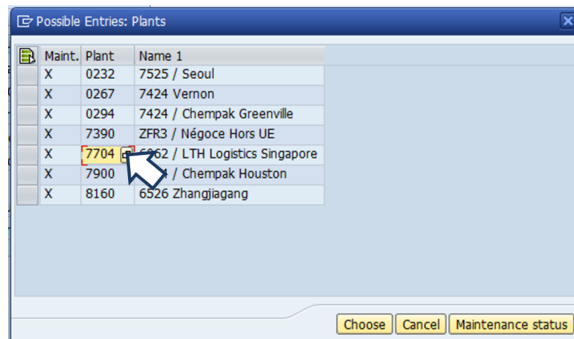
STEP 2

Click on the button beside the plant code



STEP 3

Click on the button beside any plant code



STEP 4

Fill possible entries depending on your need

Plant (2)

Possible Entries for Plants

Search Term 2

Search Term 1

Postal Code

City

Name 2

Company name

Address Version

Plant

Maximum No. of Hits

STEP 5

i The plant type of 7703 is **NDIR**

Plant (3) 1 Entry found

Possible Entries for Plants

Plnt	Search Ter	Search Term 1	Postl Co	Cl	Name 2	Name	Verst
7703	NDIR	SOLVAY SPECIALTY			SOLVAY SPECIALTY CHEMICALS ASIA PACIFIC	6662 / Negoco Singapore	