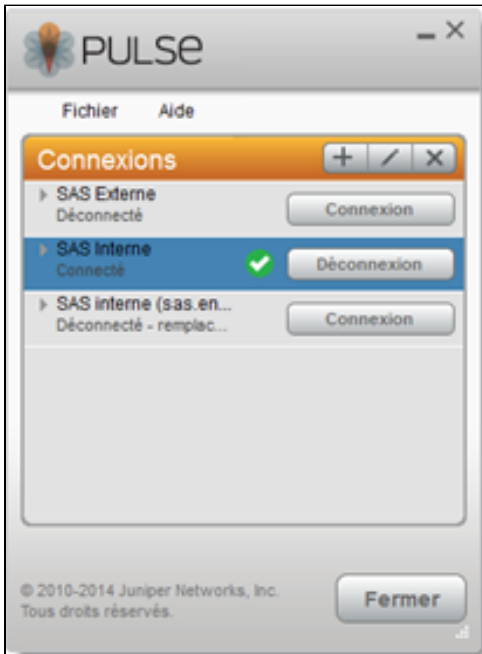
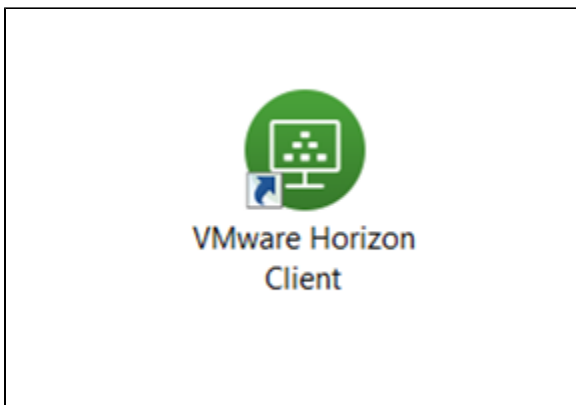


VDI Execution procedure

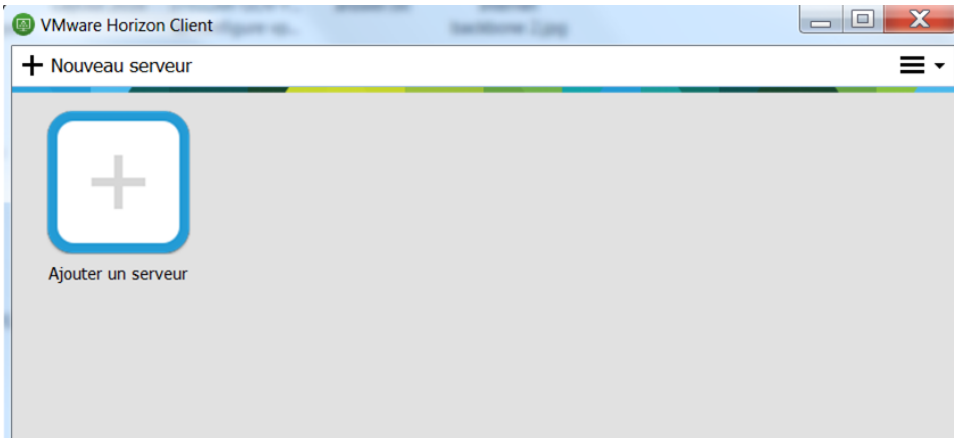
- **Step 1:** Open CGI windows session C:\Windows\System 32\drivers\etc\hosts.
- **Step 2:** Connect to Solvay network with Pulse (internal or external).



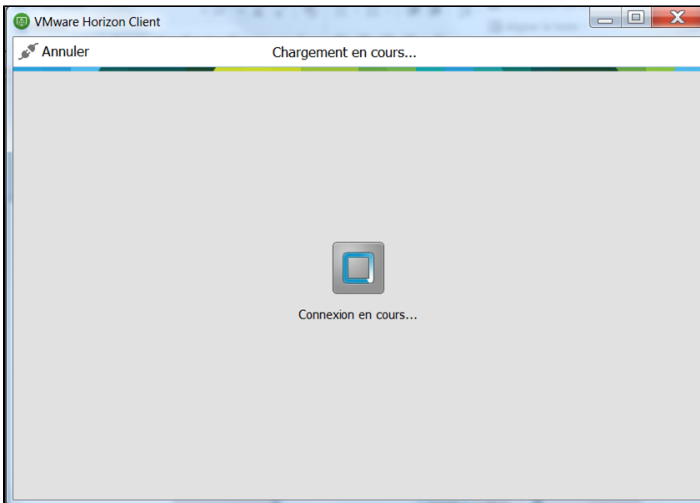
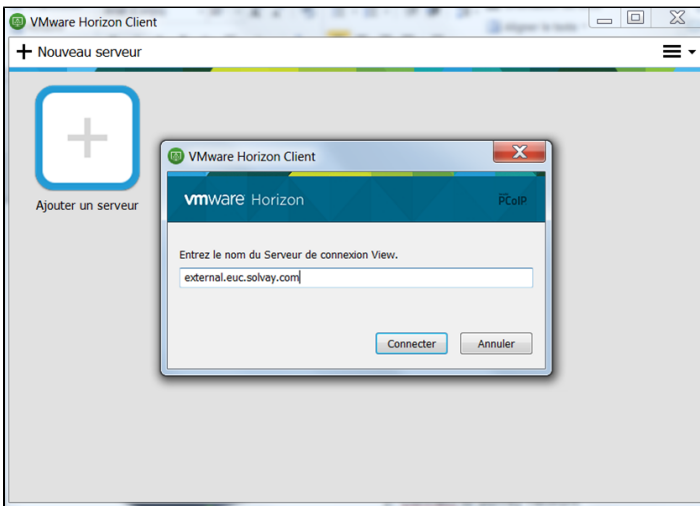
- **Step 3:** Execute VMware client.



- **Step 4:** Add a server to VMware Horizon Client follow the below step.
 1. Add a server by clicking on the left side button as below screen.

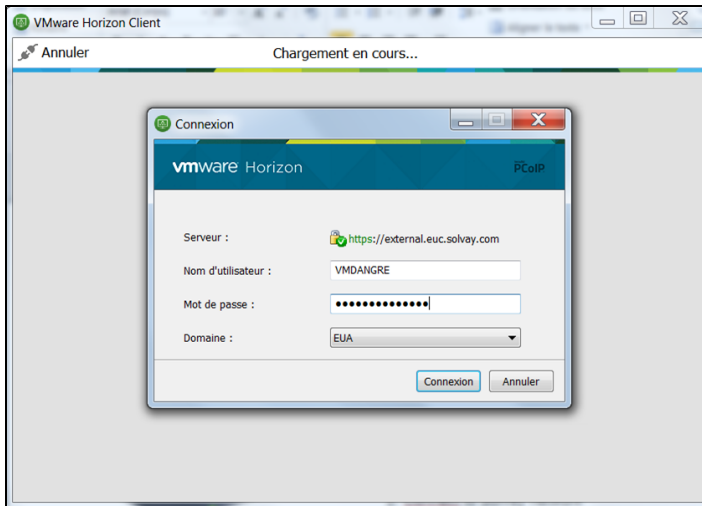


2. Add a server address as below and click on connect.



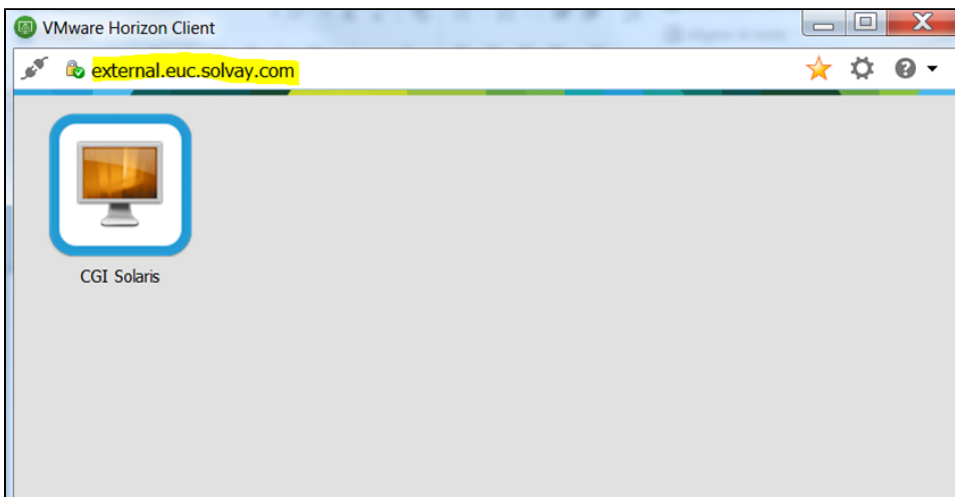
You might facing an error message about timeout reply from VDI platform, so just try again

3. Enter your Solvay ID and password.



4. Server details is added to the VMware Horizon Client.

- **Step 5:** Double click on the « CGI Solaris » icon to open your virtual machine.



- **Step 6:** VMware client window - Virtual machine – Solvay Desktop.



You are now in the virtual machine with Solvay Corporate logo.

By default, the localisation settings are in US format.

You have to change settings in « Panel control » to fit your hardware (keyboard) and localisation.