

Exchanges Rates (REEL / ACTUAL tables) in BFC SYENSQO

- 1. Objective and Scope
- 2. Quantum files
 - 2.1 Content of files
 - 2.2 Controls in place on Syensqo Treasury team side
 - 2.2 Treasury point of contacts in case of issues
- 3. BFC upload
 - 3.1 Create REEL YYYY.MM table in BFC_Top_SCO
 - 3.2 Import Quantum file
 - 3.3 January Y Exchange Rates - Check consistency of Y-1 rates
 - 3.4 Every month - Run Excel retrieval file to check consistency
 - 3.5 Piloting to BFC_Prod_SCO database
- 4. Exchange Rates publication in GAR Syensqo AODOCs (GAR team site)
 - 4.1 Beginning of the year (in January YYYY) - creation of the new file for year YYYY
 - 4.2 Monthly updates
- 5. Communication

1. Objective and Scope

The purpose of this document is to describe the monthly process to update "ACTUAL/REEL" exchange rates in BFC Syensqo.

"ACTUAL/REEL" exchange rates are used in the following reporting categories to **convert**, during the Consolidation runs, **package submitted in Local currency to Consolidation currency (main currency being EUROS)**:

- **ACTUAL2** - IFRS Consolidation operated every month
- **ACTUAL1-TAX** - Tax reporting cycles operated in Q1, Q2, Q3 , October Hard Close and final Year End
- **ACTUAL3** - Annual appendices required to complete Syensqo Annual Report (analysis of Net Financial Indebtedness, commitments, related parties...) - requested in September and at Year End
- **ACTUAL0** - Statutory net equity for dividends valuation / Financial information on Non Consolidated companies
- **ACTUAL1** - Quarterly collection for Pillar II and "CBCR - Country by Country Report" (OECD requirement)
- **RSB** - Restatement of Y-1 Financial Statements to current Y Perimeter and Exchange Rates

Below are the **6 types of conversion rates** updated in this monthly process:

- **TC - Closing rate** - used for Balance Sheet Closing balance and some specific flows
- **TMN - Average cumulative rate** - used for P&L and some variation flows from BS
- **TMN-1 - Average rate Dec.Y-1**
- **TO - Opening rate** (equals to Dec.Y-1 closing rate) - used for Balance Sheet opening balance and some specific flows
- **TCN-1 - Closing rate N-1** (closing rate / same period of previous year)
- **TMYN-1 - Average rate N-1** (average rate / same period of previous year)

In addition to "ACTUAL/REEL" tables, BFC Admin is also responsible for the update of **2 other Exchange Rates tables - PREV and SIMULATION - used in Controlling categories**

- PREV rates are used for Budget purposes
- SIMULATION rates for Business Forecast reviews
- both are communicated by the Corporate Controlling team to BFC Admin

2. Quantum files

2.1 Content of files

Quantum is the **Treasury system** managing centrally **Syensqo official exchange rates** and distributing them across the SAP applications.

On the **last working day** of the month, Quantum (through e-mail address QUANTUM-Solvay@avantgardportal.com) automatically sends 4 emails (one per each file) to [ECo-\\$SBS FinanceSL Fin Acc SU BFC Admin](#) with the following contents:

- QUANTUM : YYYY.MM [Rates Interface](#) for BFC contains YYYY.MM_BFC_Rates_Interface_FromQT.txt file
- QUANTUM : YYYY.MM [Monthly Rates](#) for BFC contains YYYY.MM-BFC_MonthlyRates_FromQT.xls file
- QUANTUM : YYYY.MM [Quarterly Rates](#) for BFC contains YYYY.MM-BFC_QuarterlyRates_FromQT.xls file
- QUANTUM : YYYY.MM [Year's Rates](#) for BFC contains YYYY.MM-BFC_YearRates_FromQT.xls file

2.2 Controls in place on Syensqo Treasury team side

After several issues on BFC Admin side with Quantum files received (missing or inconsistent Exchange Rates), **new process of controls will be conducted on Syensqo Treasury team before sending to BFC Admin:**

- 1/ **TSU Tools and BAM team is doing the Fixing as usual** (verification of rates received from Reuters, initiating the rates import process within Quantum and generating the different year-to-date / monthly average rates calculation required for BFC).
- 2/ During the fixing process, **BFC reports are generated and 4 e-mails are sent to TSU Tools and BAM team for visual controls:**
 - 1 E-mail "QUANTUM : YYYY.MM BFC Rates Interface for control" related to BFC interface: controlling the 5 different information are generated for all currencies (TCN-1;TMYN-1;TMN-1;TO;TC)
 - 3 E-mails "QUANTUM : YYYY.MM Year's (or Quarterly or Monthly) BFC Rates for control" related to BFC Monthly/Quarterly /Year's rates: controlling the rates were calculated for the corresponding period for all currencies
- 3/ **If all the visual controls are ok, TSU Tools and BAM is launching the specific Quantum job "QT Fixing Rates - 3 -EOM BFC rates (after control)" that will send the 4 emails to BFC defined recipients.**
- 3bis/ **If all the visual controls are not ok** (missing rates in one of the files), **it might be caused by some delays in the rates import and calculation within Quantum.** Generating in foreground the BFC reports is to be done to verify if after 1 or 2 min the reports have been updated correctly ;if so, TSU Tools and BAM team to execute the job "QT Fixing Rates - 3 -EOM BFC rates (after control)" sending the email to BFC team.
In case the issue is persisting and the BFC reports are not correctly updated, **DT Finance and Treasury team is to be contacted** for further analysis.

Ideally **BFC reports should be communicated to BFC team latest 5PM CET.**

In case of delays, DT Finance and Treasury or TSU Tools and BAM will transfer the reports as soon as available

2.2 Treasury point of contacts in case of issues

Despite controls performed before sending, if there are **any issues with the files the point of contacts** is tsu_tools_bam@Syensqo.com (TSU team) with copy to sbs-is-appli-finance-ttc.quantum@Solvay.com (DT team)

3. BFC upload

The file YYYY.MM_BFC_Rates_Interface_FromQT.txt received from Quantum has the **correct format ready to be uploaded in BFC.**

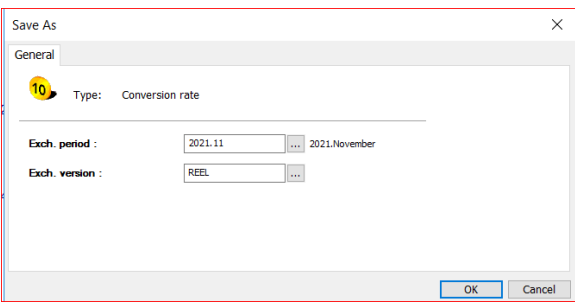
3.1 Create REEL YYYY.MM table in BFC_Top_SCO

Before being able to upload YYYY.MM reel exchange rates from the txt file, **creation of the table in BFC is first required.**

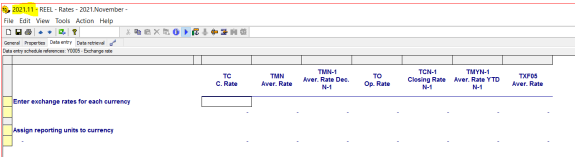
From the previous period, do a **Save as.**

Conversion Rates	Période de base (Code)	Période de s. (Code)	Version (Code)
	2022.09	2022.Sepembre	PREV
	2022.03	2022.March	PREV
	2022.06	2022.June	PREV
	2022.12	2022.December	PREV
	2021.09	2021.Sepembre	PREV
	2021.09	2021.Sepembre	SIMULATION
	2021.09	2021.Sepembre	REEL
	2021.05	2021.May	REEL
	2021.03	2021.March	PREV
	2021.03	2021.March	SIMULATION
	2021.03	2021.March	REEL
	2021.06	2021.June	PREV
	2021.06	2021.June	SIMULATION
	2021.06	2021.June	REEL

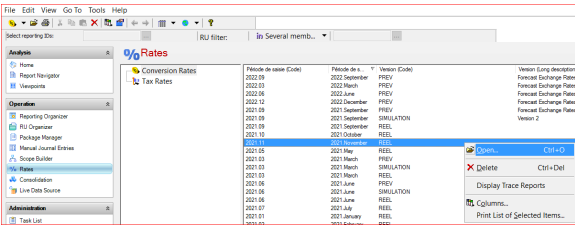
	TC C. Rate	TMN Aver. Rate	TMN-1	TO Op. Rate	TCN-1 Closing Rate	TMN-1 Aver. Rate
JPY	4.278100	4.380957	4.164890	4.509800	4.267400	4.151480
BRL	116.056300	111.894777	80.868000	103.151600	91.519700	77.551291
INR	1.543350	1.575889	1.654910	1.588900	1.654950	1.881610
USD	1.955900	1.955900	1.955900	1.955900	1.955900	1.955900
BIDR	1.955900	1.955900	1.955900	1.955900	1.955900	1.955900
BHD	0.439150	0.449623	0.430634	0.462550	0.441100	0.428206



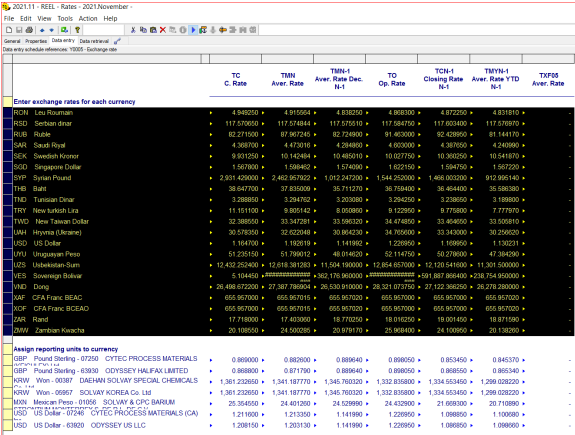
Save the new table  and close.



Open the new table



Select all lines, except the frozen rates if any, and press DELETE to erase previous month rates.



2021.11 - REEL - Rates - 2021 November -

File Edit View Tools Action Help

Source: Exchange Rates - Operational
Data entry schedule reference: '1985 - Exchange Rates

	TC C. Rate	TMN Aver. Rate	TMN-1 Aver. Rate Dec. Bt1	TO Op. Rate	TCN-1 Closing Rate Bt1	TMVN-1 Aver. Rate YTD Bt1	TMVN Aver. Rate
Enter exchange rates for each currency							
PHP Philippine Peso							
PKR Pakistan Rupee							
PLN Zloty							
RON Lei Roumanian							
RSD Serbian dinar							
RUB Ruble							
SAR Saudi Riyal							
SEK Swedish Kronor							
SGD Singapore Dollar							
SDP Syrian Pound							
THB Baht							
TND Tunisian Dinar							
TRY New Turkish Lira							
TWD New Taiwan Dollar							
UAH Ukrainian Hryvnia							
USD US Dollar							
UYU Uruguayan Peso							
UZS Uzbekistan Sum							
VES Venezuelan Bolivar							
VND Dong							
WON CFA Franc BEAC							
XOF CFA Franc BCEAO							
ZAR Rand							
ZMW Zambian Kwacha							
Assign reporting units to currency							
GBP Pound Sterling - 19750 ODYSSEY PROCESS MATERIALS	0.869000	0.862000	0.869400	0.868000	0.863450	0.845370	
GBP Pound Sterling - 63930 ODYSSEY HALFAK LIMITED	0.868800	0.871700	0.868600	0.868000	0.869500	0.865340	
KRW Won - 05887 DACHAN SOLVAY SPECIAL CHEMICALS	1.36121000	1.34118770	1.34570000	1.33240000	1.33455340	1.29940800	
KRW Won - 05887 SOLVAY KOREA Co. Ltd.	1.36121000	1.34118770	1.34570000	1.33240000	1.33455340	1.29940800	
MXN Mexican Peso - 01056 SOLVAY & CPC BARILUM	25.934500	24.401900	24.509900	24.431900	24.499300	20.719890	

3.2 Import Quantum file

Import YYYY.MM_BFC_Rates_Interface_FromQT.txt file into BFC.

2021.11 - REEL - Rates - 2021 November -

File Edit View Tools Action Help

Source: Exchange Rates - Operational
Data entry schedule reference: '1985 - Exchange Rates

	TC C. Rate	TMN Aver. Rate	TMN-1 Aver. Rate Dec. Bt1	TO Op. Rate	TCN-1 Closing Rate Bt1	TMVN-1 Aver. Rate YTD Bt1	TMVN Aver. Rate
Import rates for each currency							
EGPOT...) Peso							
Close Alt-F4							
PKR Pakistan Rupee							
RON Lei Roumanian							
RSD Serbian dinar							
RUB Ruble							
SAR Saudi Riyal							
SEK Swedish Kronor							

Data Import Wizard - Source & Prior Processing

Which source contains the data to be imported?
Source: File

Processing existing data

If the imported rows are already contained in the target file, do you want to replace the existing data or add it to the source data?

Replace Aggregate

Prepare destination

Do you want to purge the data in the import destination?

Yes, purge contents before importing
Delete all types of data (amounts and comments)
 Delete imported data type only (amounts or comments)

Yes, also import empty rows

< Back Next > Cancel

Data Import Wizard - Define Physical Format

File
exchange rates\2021.11_BFC_Rates_Interface_FromQT (1).txt

File type
 with separators fixed length

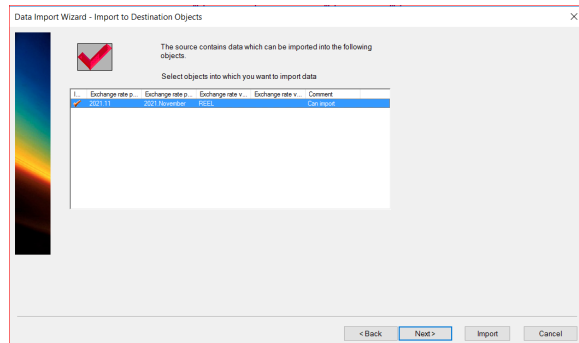
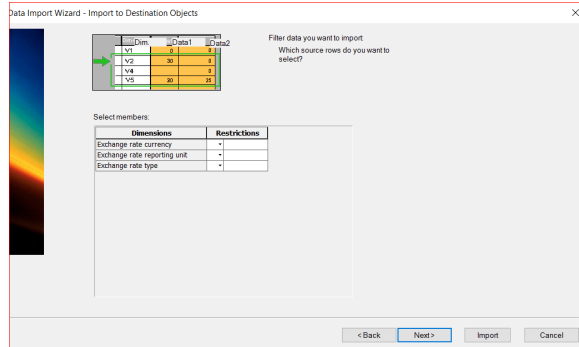
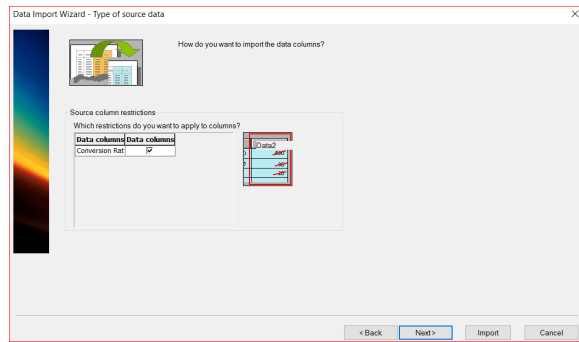
Characteristics
Header rows to skip: 0

Generate file containing the rejected data

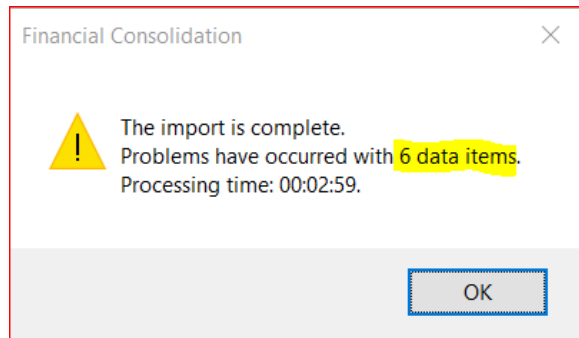
Preview

D_conv	pe	D_exch	ve	D_conv	cu	D_exch	ty	P_conv	rate
2021.11	REEL	AED	TCN-1	4.76900000					
2021.11	REEL	AED	TMVN-1	4.76900000					
2021.11	REEL	AED	TMN-1	4.76400000					
2021.11	REEL	AED	TO	4.50600000					
2021.11	REEL	AED	TC	4.77000000					

< Back Next > Cancel



6 lines expected to be rejected: Currency CNH not created in BFC table as not required in the IFRS Consolidation.




Data Import Wizard - Import to Destination Objects

L.	Exchange rate p.	Exchange rate p.	Exchange rate v.	Stat	End
2021.11	2021.November	REEL	Exchange rate v.	12.30.2021 11.59	12.30.2021

Import details 2021.11 - REEL

Cause	Row	Exch. period	Exch. vers
Cause : Code CNH does not exist for the CONV-CU dimension (6 items)			
Code CNH does not exist for the CONV-CU dimen...	67	2021.11	REEL
Code CNH does not exist for the CONV-CU dimen...	68	2021.11	REEL
Code CNH does not exist for the CONV-CU dimen...	69	2021.11	REEL
Code CNH does not exist for the CONV-CU dimen...	70	2021.11	REEL
Code CNH does not exist for the CONV-CU dimen...	71	2021.11	REEL
Code CNH does not exist for the CONV-CU dimen...	72	2021.11	REEL

Close

Save the table 

2021.11 - REEL - Rates - 2021.November -

	TC C. Rate	TMN Aver. Rate	TMN-1 Aver. Rate Dec. Y-1	TO Op. Rate	TO-1 Closing Rate Y-1	TMYN-1 Aver. Rate YTD Y-1	TMYS Aver. Rate
Enter exchange rates for each currency							
AED UAE Dirham	4.227100	4.308927	4.184800	4.508800	4.297400	4.151400	-
ARS Argentine Peso	110.058300	111.894777	80.868000	103.151000	91.519700	77.551291	-
AUD Australian Dollar	1.542300	1.572800	1.654910	1.588000	1.654600	1.685110	-
BAM Mark	1.955800	1.955800	1.955800	1.955800	1.955800	1.955800	-
BGN Bulgarian Lev	1.955800	1.955800	1.955800	1.955800	1.955800	1.955800	-
BHD Bahraini Dinar	0.499100	0.440823	0.440824	0.440500	0.441100	0.420206	-
BRL Brazilian Real	6.569700	6.380344	6.584948	6.373500	6.748700	6.804118	-
CAD Canadian Dollar	1.438700	1.491512	1.530070	1.563600	1.544000	1.523200	-
CHF Franc	2.30626200	2.358274300	2.116246000	2.412360000	2.293271400	2.088386000	-
CLP Chilean Peso	9.014400	1.089500	1.029270	1.050400	1.089500	1.089580	-
CNY Yuan Renminbi	941.782300	888.026564	903.010350	871.748100	900.119850	904.344280	-
COP Colombian Peso	7.463200	7.709616	7.874800	8.024000	7.889000	7.871460	-
CZK Czech Koruna	4.40138000	4.421318000	4.217440000	4.188423000	4.517469700	4.293120000	-
DKK Danish Krone	25.701000	25.708700	26.466020	26.241000	27.254000	26.489790	-
DZD Algerian Dinar	7.439200	7.437900	7.454200	7.448000	7.446400	7.456400	-
EGP Egyptian Pound	168.770000	163.146240	164.865020	161.781800	161.492000	162.562070	-
EUR Euro	18.287400	18.718131	18.089850	19.302400	18.368250	17.800350	-
EUR Euro	1.000000	1.000000	1.000000	1.000000	1.000000	1.000000	-
GBP Pound Sterling	0.844300	0.861970	0.888460	0.869600	0.901700	0.882296	-
GTQ Quetzal	9.009500	9.227833	8.820200	9.562000	9.115800	8.712410	-
HKD Hong Kong Dollar	9.098100	9.204688	8.857800	9.512800	9.071600	8.792710	-
HRK Kuna	7.522300	7.526092	7.529100	7.466000	7.576000	7.526500	-
HUF Forint	300.310000	356.921197	351.240800	364.130000	307.455000	348.580470	-
IDR Rupiah	16.500888	17.048217	16.585880	17.238840	17.119520	16.513960	-
ILS Sheqel	3.807700	3.873700	3.925200	3.817100	3.807700	3.917100	-
INR Indian Rupee	87.214200	87.919006	84.630340	89.050200	86.702050	83.796470	-
ISK Icelandic Krona	149.803700	150.586429	154.606380	156.117100	154.372150	153.848870	-

3.3 January Y Exchange Rates - Check consistency of Y-1 rates

In January when updating the 1st table of the year, it is recommended to **check that the 4 Y-1 rates** from Quantum files are correct: **TMN-1 / TO / TCN-1 / TMYN-1**.

Control will be done running an Excel retrieve **Exc Rates REEL 1st @ January check on Y-1 rates** comparing Y-1 rates loaded in January REEL table versus rates from Y-1 REEL tables:

- **TMN-1 - Average rate Dec.Y-1 = TMN of December Y-1**
- **TO - Opening rate = TC (closing rate) December Y-1**
- **TCN-1 - Closing rate Y-1 = TC (closing rate) of same period Y-1**
- **TMYN-1 - Average rate Y-1 = TMN (average rate) of same period Y-1**

	TCN-1-2021.11	TCN-1-2021.11	TCN-1-2021.11	TCN-1-2021.11	TCN-1-2021.11	TCN-1-2021.11	TCN-1-2021.11
AED UAE Dirham	3.973800	3.973800	4.0816	4.0816	3.9795	3.9795	4.194

Example in January 2024:

- **TMN-1 REEL 2024.01 = TMN REEL 2023.12**

- TO REEL 2024.01 = TC REEL 2023.12
- TCN-1 REEL 2024.01 = TC REEL 2023.01
- TMYN-1 REEL 2024.01 = TMN REEL 2023.01

3.4 Every month - Run Excel retrieval file to check consistency

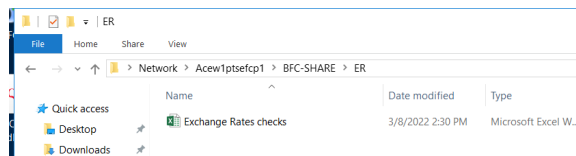
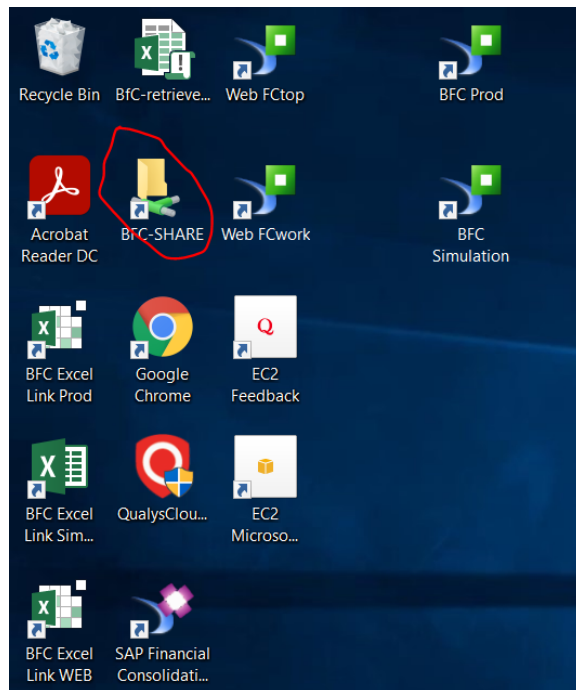
Before piloting the exchange rates table to BFC_Prod_SCO it is recommended to run a consistency check on the rates just uploaded into BFC_Top_SCO.

Connect to BFC_Top_SCO through **BFC Excel Link WEB**



Excel retrieval file - **Exchange Rates checks.xls** - is saved in this folder in the remote desktop \\Acew1ptsefcp1\BFC-SHARE\ER

The file can also be found in the Gdrive [Exchange Rates checks](#)



How to proceed with these checks:

- Update period in cell C1
- Connect to BFC_Top_SCO and refresh the file

UPDATE		CONV-PE-2021.11		CONV-PE-2021.11	CONV-PE-2021.11	CONV-PE-2021.11	CONV-PE-2021.11
		EXCH-TY-TC	EXCH-TY-TMN	EXCH-TY-TMN.1	EXCH-TY-TO	EXCH-TY-TMN.1	EXCH-TY-TMN.1
Enter exchange rates for each currency							
AED	CONV-CU-AED	AED	UAE Dirham	4.3937500			4.3937500
ARS	CONV-CU-ARS	ARS	Argentine Peso	89.1170500			89.1170500
AUD	CONV-CU-AUD	AUD	Australian Dollar	1.6448000			1.6448000
BGN	CONV-CU-BGN	BGN	Bulgarian Lev	1.9595000			1.9595000
BRL	CONV-CU-BRL	BRL	Brazilian Real	6.6000500			6.6000500
CAD	CONV-CU-CAD	CAD	Canadian Dollar	1.2675500			1.2675500
CHF	CONV-CU-CHF	CHF	Swiss Franc	2283.9000000			2283.9000000
CLP	CONV-CU-CLP	CLP	Chilean Peso	1.0800000			1.0800000
CNY	CONV-CU-CNY	CNY	Yuan Renminbi	923.5887000			923.5887000
CDP	CONV-CU-CDP	CDP	Colombian Peso	7.9735000			7.9735000
CZK	CONV-CU-CZK	CZK	Czech Koruna	453.3200000			453.3200000
DKK	CONV-CU-DKK	DKK	Danish Krone	27.3380000			27.3380000
EGP	CONV-CU-EGP	EGP	Egyptian Pound	7.4465000			7.4465000
EUR	CONV-CU-EUR	EUR	Euro	18.4217500			18.4217500

User Identification

Financial Consolidation

Data source: /FinancialConsolidation/sobry.com4.ctop.zl

Authentication

User: BUIFR403

Password: *****

OK Cancel

Exchange

FILE HOME INSERT PAGE LAYOUT FORMULAS DATA REVIEW VIEW ADD-INS ANALYSIS ANALYS

Financial Consolidation

Autonomous Mode Import In Cell Range

Data Entry Connected Export In Sheet

Define Schedule In Workbook

Connect

Disconnect

Personal Information

About Financial Consolidation Web...

		C	D	E	F
		CONV-PE-2021.11	CONV-PE-2021.11	CONV-PE-2021.11	CONV-PE-2021.11
		EXCH-TY-TC	EXCH-TY-TMN	EXCH-TY-TMN	EXCH-TY-TMN
Enter exchange rates for each currency					
7	AED	CONV-CU-AED	AED UAE Dirham	4,2522500	4,3937500
8	ARS	CONV-CU-ARS	ARS Argentine Peso	114,1725500	111,5568600

Exchange Rates Calculator - Get

FILE HOME INSERT PAGE LAYOUT FORMULAS DATA REVIEW VIEW ADD-INS ANALYSIS ANALYS DESIGN

UPDATE		CONV-PE-2021.11		CONV-PE-2021.11	CONV-PE-2021.11	CONV-PE-2021.11	CONV-PE-2021.11
		EXCH-TY-TC	EXCH-TY-TMN	EXCH-TY-TMN.1	EXCH-TY-TO	EXCH-TY-TMN.1	EXCH-TY-TMN.1
Enter exchange rates for each currency							
		TC Rate	TMN Aver. Rate	TMN 1 Aver. Rate Dec. Y-1	TO Op. Rate	TCN 5 Closing Rate Y-1	TMN 5 Aver. Rate YTD Y-1
7	AED	CONV-CU-AED	AED UAE Dirham	4.3937500	4.3946800	4.0980000	4.3005000
8	ARS	CONV-CU-ARS	ARS Argentine Peso	114.1725500	113.5480000	103.6800000	103.1550000
9	AUD	CONV-CU-AUD	AUD Australian Dollar	1.6448000	1.6448000	1.6448000	1.6448000
10	BGN	CONV-CU-BGN	BGN Bulgarian Lev	1.9595000	1.9595000	1.9595000	1.9595000
11	BRL	CONV-CU-BRL	BRL Brazilian Real	6.6000500	6.6000500	6.6000500	6.6000500
12	CAD	CONV-CU-CAD	CAD Canadian Dollar	1.2675500	1.2675500	1.2675500	1.2675500
13	CHF	CONV-CU-CHF	CHF Swiss Franc	2283.9000000	2283.9000000	2283.9000000	2283.9000000
14	CLP	CONV-CU-CLP	CLP Chilean Peso	1.0800000	1.0800000	1.0800000	1.0800000
15	CNY	CONV-CU-CNY	CNY Yuan Renminbi	923.5887000	923.5887000	923.5887000	923.5887000
16	CDP	CONV-CU-CDP	CDP Colombian Peso	7.9735000	7.9735000	7.9735000	7.9735000
17	CZK	CONV-CU-CZK	CZK Czech Koruna	453.3200000	453.3200000	453.3200000	453.3200000
18	DKK	CONV-CU-DKK	DKK Danish Krone	27.3380000	27.3380000	27.3380000	27.3380000

- From column E to J there's a retrieve of what we've just uploaded into BFC with the interface file.

- In columns M and N there's a comparison of TO (Opening Rate) and TMN-1 (Closing rate) with TC and TMN rates from Dec Y-1 table. No differences are expected.

UPDATE		CONV-PE-2021.11		CONV-PE-2020.12	CONV-PE-2020.12	CONV-PE-2020.11	CONV-PE-2020.11
		EXCH-TY-TC	EXCH-TY-TMN	EXCH-TY-TC	EXCH-TY-TMN	EXCH-TY-TC	EXCH-TY-TMN
Enter exchange rates for each currency							
				December Previous Year	Same Month of Previous Year		
AED	CONV-CU-AED	AED UAE Dirham	0.0000000	0.0000000	0.0000000	0.0000000	0.0000000
ARS	CONV-CU-ARS	ARS Argentine Peso	0.0000000	0.0000000	0.0000000	0.0000000	0.0000000
AUD	CONV-CU-AUD	AUD Australian Dollar	0.0000000	0.0000000	0.0000000	0.0000000	0.0000000
BGN	CONV-CU-BGN	BGN Bulgarian Lev	0.0000000	0.0000000	0.0000000	0.0000000	0.0000000
BRL	CONV-CU-BRL	BRL Brazilian Real	0.0000000	0.0000000	0.0000000	0.0000000	0.0000000
CAD	CONV-CU-CAD	CAD Canadian Dollar	0.0000000	0.0000000	0.0000000	0.0000000	0.0000000
CHF	CONV-CU-CHF	CHF Swiss Franc	0.0000000	0.0000000	0.0000000	0.0000000	0.0000000
CLP	CONV-CU-CLP	CLP Chilean Peso	0.0000000	0.0000000	0.0000000	0.0000000	0.0000000
CNY	CONV-CU-CNY	CNY Yuan Renminbi	0.0000000	0.0000000	0.0000000	0.0000000	0.0000000
CDP	CONV-CU-CDP	CDP Colombian Peso	0.0000000	0.0000000	0.0000000	0.0000000	0.0000000
CZK	CONV-CU-CZK	CZK Czech Koruna	0.0000000	0.0000000	0.0000000	0.0000000	0.0000000
DKK	CONV-CU-DKK	DKK Danish Krone	0.0000000	0.0000000	0.0000000	0.0000000	0.0000000

- In columns P and Q there's a comparison of TCN-1 (Closing Rate Y-1) and TMN-1 (Aver. Rate Y-1) with TC and TMN extracted from the Y-1 table. No differences are expected.

- In Columns V and W there's a calculation of the TC and TMN variations (%) compared to previous month.
- There's a conditional formatting in these cells: variations >= or <= 50% are highlighted in red and those cases should be communicated to GAR Conso team by email as a warning message of high currency variation.

UPDATE		CONV-PE-2021.11		CONV-PE-2021.10	CONV-PE-2021.10		
		EXCH-TY-TC	EXCH-TY-TMN	EXCH-TY-TC	EXCH-TY-TMN		
Enter exchange rates for each currency							
				Previous Month	Variation % from Previous Month		
				TC	TMN		
AED	CONV-CU-AED	AED UAE Dirham	4.278000	4.393687	2.57%	0.41%	
ARS	CONV-CU-ARS	ARS Argentine Peso	116.893500	116.84770	-0.04%	-0.21%	
AUD	CONV-CU-AUD	AUD Australian Dollar	1.545500	1.576680	-2.82%	0.05%	
BGN	CONV-CU-BGN	BGN Bulgarian Lev	1.959500	1.959500	0.00%	0.00%	
BRL	CONV-CU-BRL	BRL Brazilian Real	6.560700	6.363440	3.18%	0.05%	
CAD	CONV-CU-CAD	CAD Canadian Dollar	1.438750	1.449120	-0.84%	0.36%	
CHF	CONV-CU-CHF	CHF Swiss Franc	2.283.900.000	2.283.900.000	0.00%	0.00%	
CLP	CONV-CU-CLP	CLP Chilean Peso	1.063400	1.066500	-0.29%	0.35%	
CNY	CONV-CU-CNY	CNY Yuan Renminbi	941.782300	889.69564	-6.89%	-0.45%	
CDP	CONV-CU-CDP	CDP Colombian Peso	7.452300	7.458700	-0.09%	0.05%	
CZK	CONV-CU-CZK	CZK Czech Koruna	4.40182900	4.42139500	-0.48%	-0.85%	
DKK	CONV-CU-DKK	DKK Danish Krone	25.781000	25.730700	0.20%	0.02%	
EGP	CONV-CU-EGP	EGP Egyptian Pound	7.457800	7.478100	-0.28%	0.05%	

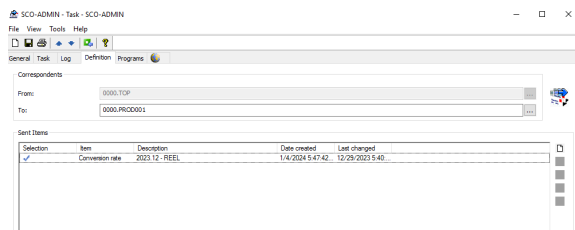
3.5 Piloting to BFC_Prod_SCO database

Task SCO-ADMIN has to be used to pilot REEL Exchange Rates table inserting the REEL table of the month.

FCIOR_SCO - ADMIN-MATHIEU - Financial Consolidation Desktop

Task List

Navigator	Type	Code	Active	Status	Priority	Last run	Run next	Last changed by
nsa	Type of Task	Receive objects (8 items)						
nsa	Type of Task	Run audit (40 items)						
nsa	Type of Task	Run consolidation (88 items)						
nsa	Type of Task	Run intercompany reconciliations (18 items)						
nsa	Type of Task	Scan objects (1 item)						
nsa	Type of Task	Send objects (188 items)						
nsa	SCO-GESTION		✓	✓		14/2024 11:00 PM		ADMIN-MATHIEU
nsa	SCO-WORK		✓	✓		12/2023 12:08 PM		ADMIN-MATHIEU
nsa	SCO-CTRLIN		✓	✓		12/2023 11:18 AM		ADMIN-MATHIEU
nsa	SCO-CONSO		✓	✓		11/10/2023 9:55 AM		ADMIN-MATHIEU



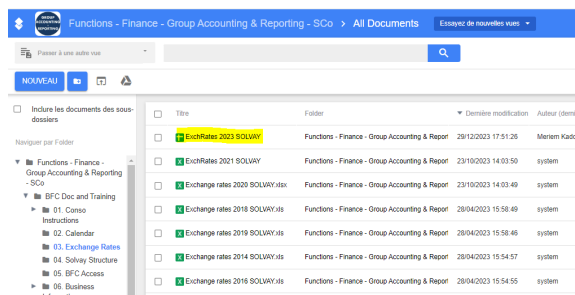
4. Exchange Rates publication in GAR Syensqo AODOCs (GAR team site)

Besides BFC update, BFC Admin is also in charge of updating every month the actual (REEL) exchange rates file published in [GAR Syensqo AODOC](#).

The information received in the 3 files from Quantum (Monthly, Quarterly and Yearly rates) are in the exact same format as the 3 tabs in GAR Syensqo AODOCs file and therefore only a copy/paste is necessary.

4.1 Beginning of the year (in January YYYY) - creation of the new file for year YYYY

- In GAR Syensqo AODOC library open the Exchange Rate file from previous year (YYYY-1)



CURRENCY	DEC 2022		January		February	
	Average	End of Month	Average	End of Month	Average	End of
1 EUR = x AED	3.86809516	3.92	3.95440227	3.97695	3.94534524	3.91
1 EUR = x ARS	136.67847733	188.6045	195.67364318	201.9112	200.17194762	208.61
1 EUR = x AUD	1.51632395	1.57065	1.55252955	1.54775	1.55175000	1.51
1 EUR = x BAM	1.9558	1.9558	1.9558	1.9558	1.95580000	1.91
1 EUR = x BGN	1.9558969	1.95565	1.95615455	1.95585	1.95601310	1.91
1 EUR = x BHD	0.3869814	0.40225	0.40580227	0.40805	0.40483929	0.41
1 EUR = x BRL	5.43908818	5.63535	5.60163162	5.5519	5.57037500	5.51
1 EUR = x CAD	1.36936337	1.4447	1.44672045	1.45635	1.44347619	1.41
1 EUR = x CHF	219.53669136	2170.7816	2193.86505455	2220.509	2196.42184266	2173.61
1 EUR = x CLP	1.00473702	0.885	0.99585227	1.00385	0.99232810	0.91
1 EUR = x CNH	917.10551628	910.1828	888.0882955	877.78555	872.59596310	884.21
1 EUR = x CNY	7.08871434	7.37475	7.31793636	7.32525	7.32514524	7.31
1 EUR = x COP	0.707813702	7.4199	7.31359773	7.3161	7.31866786	7.31
1 EUR = x CUP	4471.86279302	5175.4586	5080.86693409	5084.66395	5112.13634762	5093.91
1 EUR = x CZK	24.56569767	24.1165	23.96061364	23.915	23.94599266	23.51
1 EUR = x DKK	7.43953721	7.43645	7.43828409	7.4388	7.44142738	7.41
1 EUR = x DZD	149.6578343	145.44	146.85314545	147.26175	146.58001667	145.01
1 EUR = x EGP	20.16846143	26.42225	30.95809901	32.6774	31.77146071	32.51
1 EUR = x GBP	0.85259012	0.887	0.88205455	0.88	0.88376429	0.81
1 EUR = x GTC	8.15816236	8.38105	8.44975227	8.48905	8.42175833	8.21
1 EUR = x HKD	8.24561802	8.3222	8.41918684	8.4057	8.41339881	8.31
1 EUR = x HRK	7.53458702	7.5345	7.5345	7.5345	7.53450000	7.51
1 EUR = x HUF	301.23145349	400.525	396.05022727	390.8	390.69130952	378.21
1 EUR = x IDR	15.62452903295	16.6159715	16.41051312045	16.23042325	16.31688109	16.11
1 EUR = x ILS	3.53391686	3.7583	3.71182045	3.76445	3.75239762	3.81
1 EUR = x INR	82.09097171	88.30185	88.11748854	88.70835	88.30262500	87.71
1 EUR = x ISK	142.23575155	151.46365	154.0272136	153.1063	153.57762381	152.31
1 EUR = x JMD	161.61945	161.91665	164.8774	166.572	164.90317143	163.21
1 EUR = x JOD	0.7469281	0.75775	0.76417045	0.76865	0.76240000	0.71
1 EUR = x JPY	138.01758043	140.7248	140.58065	141.2177	141.41831548	145.01
1 EUR = x KRW	1357.2278376	1349.6641	1339.26835455	1333.7315	1352.70593452	1405.01

- Select option "Open in a new tab" to open it in google drive

- File opened in Google Drive

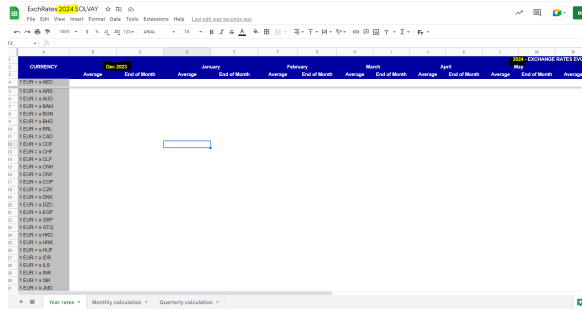
CURRENCY	DEC 2022		January		February		March		April	
	Average	End of Month	Average	End of Month	Average	End of Month	Average	End of Month	Average	End of Month
EUR → AUD	3.8605916	3.92	3.9440227	3.91925	3.9434521	3.9500000				
EUR → ARS	136.6744733	188.6045	185.6734318	201.9112	202.1714020	209.8700000				
EUR → BGD	1.93032396	1.9706	1.9552395	1.94775	1.9517000	1.9700000				
EUR → BAH	1.9558	1.9558	1.9558	1.9558	1.9558	1.9558				
EUR → BRL	1.9558989	1.95585	1.95616455	1.95585	1.9561110	1.9558000				
EUR → BND	0.3969814	0.40225	0.4058227	0.40805	0.4048329	0.4040000				
EUR → BOP	5.4308818	5.42525	5.4315122	5.43151	5.4315122	5.4315122				
EUR → CAD	1.3893037	1.4447	1.4492545	1.45655	1.4454179	1.4468500				
EUR → CHF	2.1195300136	2.1707816	2.193380545	2.225509	2.1964214380	2.1738000000				
EUR → CLP	917.9551628	916.1928	888.0882956	877.78585	872.9598310	884.2962000				
EUR → CNH	7.0871434	7.37475	7.3179336	7.2525	7.2525	7.2625000				
EUR → CNY	7.0781302	7.4199	7.3159973	7.2161	7.3186878	7.3860000				
EUR → COP	4471.86279392	5179.4488	5089.9893498	5046.08106	5102.738476	5003.9500000				
EUR → CZK	24.9658977	24.1196	23.9681364	23.815	23.9486038	23.5500000				
EUR → DKK	7.4635271	7.4346	7.4328428	7.4388	7.4442724	7.4440000				
EUR → DZD	149.675243	146.44	146.8514545	147.26175	146.9890007	150.2140000				
EUR → EGP	20.95486143	20.42225	20.9589091	22.8774	21.77148071	22.5770000				
EUR → GWP	0.8269012	0.887	0.8820465	0.88	0.8820465	0.8770000				
EUR → GTQ	8.1681826	8.38185	8.4497527	8.48805	8.4217583	8.3960000				
EUR → HND	8.2491882	8.3222	8.4191884	8.4887	8.4188881	8.3240000				
EUR → HKD	7.5248702	7.5345	7.5345	7.5345	7.5345	7.5345000				
EUR → ILS	3.53391686	3.583	3.57145245	3.57445	3.5729752	3.5855000				
EUR → INR	82.8997171	88.38185	88.1174884	88.7835	88.3026250	87.7850000				
EUR → JPY	142.237516	151.48265	154.6272116	153.1803	153.3776281	152.2010000				
EUR → KRW	161.9147449	160.4376	160.8627937	161.6	160.8819545	170.9900000				

- Menu "File" option "make a copy" to duplicate the document

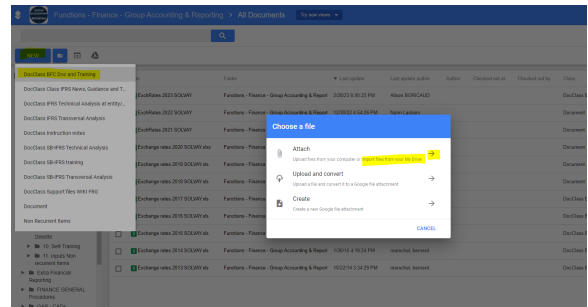
- In the "Copy" window
 - rename it "ExcRates YYYY SYENSQO"
 - storage folder has to be changed as BFC Admin team has no access to the default folder "03. Exchange Rates" of AODOC that appears

- click on the location folder in which it will be temporary stored to change it :
 - location to be selected is: BFC SCO Admin drive / Reporting openings / exchange rates
- click on Select

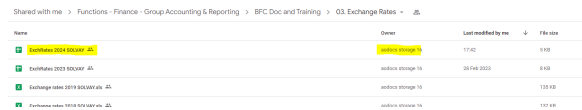
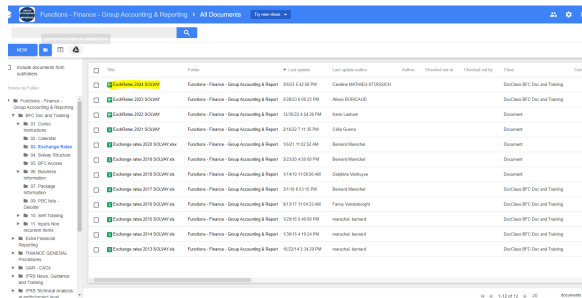
- In the new File generated by copy:
 - rename it "ExcRates YYYY SYENSQO"
 - adapt columns titles in each tab
 - remove previous exchange rates values (YYYY values will come from monthly updates)
 - in tab Year Rates in Column Dec Y-1 copy the ER from Y-1 file - example
 - in the new file ExcRates 2024 SYENSQO, take and copy Dec 2023 rates taken in file ExcRates 2023 SYENSQO tab "Year rates"



- In the new File generated by copy:
 - rename it "ExcRates YYYY Syensqo"
 - adapt columns titles in each tab
 - remove previous exchange rates values (YYYY values will come from monthly updates)



- Load the new file into GAR Syensqo AODOC:
 - click on "NEW" button
 - select "DocClass BFC and Doc Training"
 - "Choose a file" window => select 1st option "import file from your My Drive"
 - Then select Google Drive and search and select the new file => the upload starts



- Once loaded the new file appears in GAR Syensq AODOC and its storage has become an GAR Syensq AODOC storage (the file belongs to GAR Syensq AODOC, no more to My drive)

4.2 Monthly updates

Open the Exchange Rates YYYY file in GAR Syensq AODOCs

CURRENCY	Average	End of Month	Average	End of Month	Average
EUR = x AED	81.67650000	82.52550000	84.01370000	84.55450000	85.50500000
EUR = x AHS	80.86483000	103.15160000	104.43437000	105.89330000	105.78020000
EUR = x BAM	1.65481000	1.58860000	1.57645000	1.58400000	1.58480000
EUR = x BBD	1.95580000	1.95580000	1.95580000	1.95580000	1.95580000
EUR = x BGN	1.95580000	1.95580000	1.95580000	1.95580000	1.95580000
EUR = x BHD	0.43063370	0.46255000	0.46255000	0.45833000	0.45746620
EUR = x BRL	6.89484830	6.37305000	6.51105230	6.64050000	6.52878750
EUR = x CAD	1.52037000	1.56330000	1.56937000	1.56400000	1.56232000
EUR = x CHF	216.54000000	2412.86020000	2394.87000000	2391.31875000	2391.41000000
EUR = x CNY	1.07474700	1.08040000	1.07932000	1.07880000	1.08250000
EUR = x CLP	903.01030000	871.74810000	881.79810000	883.75880000	877.14278000
EUR = x CZK	7.87870000	7.87930000	7.87440000	7.87275000	7.87379000
EUR = x DKK	7.87485000	8.02400000	7.87490000	7.83850000	7.84695000
EUR = x GBP	4217.41000000	4198.82330000	4232.78000000	4319.17630000	4276.11000000
EUR = x HKD	28.44600000	28.24100000	28.13070000	28.22000000	28.00483000
EUR = x HUF	7.45426000	7.44680000	7.43660000	7.43700000	7.43769000
EUR = x INR	144.85532000	161.79180000	161.20960000	161.47030000	161.05640000
EUR = x JPY	16.09890000	16.20540000	16.11488000	16.00010000	16.02414000
EUR = x KRW	0.88939000	0.89800000	0.89200000	0.89400000	0.88259880
EUR = x LTL	8.62026000	9.56200000	9.48030000	9.44100000	9.43002000
EUR = x MXN	8.83708000	9.51280000	9.43567000	9.40660000	9.40707000
EUR = x MYR	7.03812000	7.64600000	7.65454000	7.56510000	7.56810000
EUR = x NOK	351.24080000	364.13000000	359.16400000	358.21500000	358.66137000
EUR = x NZD	16.99588000	17.23844000	17.06892000	17.02189000	17.01840000
EUR = x OMR	3.82530000	3.84370000	3.84290000	3.87961000	3.87400000
EUR = x PHP	84.82634000	89.65020000	88.98780000	88.51871000	88.10000000
EUR = x RMB	7.87485000	8.02400000	7.87490000	7.83850000	7.84695000
EUR = x RUB	166.07860000	166.07860000	166.07860000	166.07860000	166.07860000

From Quantum file YYYY.MM-BFC_MonthlyRates_FromQT.xls copy the last column to GAR Syensq AODOCs file tab Monthly calculation

Month	Average	End of Month	Average	End of Month	Average
1	81.67650000	82.52550000	84.01370000	84.55450000	85.50500000
2	108.44950000	110.91900000	114.25167000	114.89620000	113.29221000
3	1.58440000	1.58440000	1.58440000	1.58440000	1.58440000
4	1.95580000	1.95580000	1.95580000	1.95580000	1.95580000
5	1.95580000	1.95580000	1.95580000	1.95580000	1.95580000
6	0.43063370	0.46255000	0.46255000	0.45833000	0.45746620
7	6.89484830	6.37305000	6.51105230	6.64050000	6.52878750
8	1.52037000	1.56330000	1.56937000	1.56400000	1.56232000
9	216.54080000	2412.86020000	2394.87000000	2391.31875000	2391.41000000
10	1.07474700	1.08040000	1.07932000	1.07880000	1.08250000
11	903.01030000	871.74810000	881.79810000	883.75880000	877.14278000
12	7.87870000	7.87930000	7.87440000	7.87275000	7.87379000

From Quantum file YYYY.MM-BFC_QuarterlyRates_FromQT.xls copy the last column to GAR Syensq AODOCs file tab Quarterly calculation

CURRENCY	Q1	Q2	Q3	Q4
1 EUR = x AED	4.42538000	4.42910000	4.32670922	
1 EUR = x AHS	106.86910000	113.35362000	114.64789733	
1 EUR = x AHS	1.35584000	1.35584000	1.35584000	
1 EUR = x BAM	1.95580000	1.95580000	1.95580000	
1 EUR = x BGN	1.95580000	1.95580000	1.95580000	
1 EUR = x BBD	0.45425500	0.45425500	0.44407190	
1 EUR = x BRL	6.80134020	6.38189280	6.14862676	
1 EUR = x CAD	1.48030000	1.48030000	1.48404688	
1 EUR = x CHF	2375.38000000	2393.42000000	2331.17889622	

From YYYY.MM-BFC_YearRates_FromQT.xls copy the last 2 columns to GAR Syensq AODOCs file tab Year rates

Average	End of Month	Average	End of Month	Average	End of Month	Average	End of Month
81.67650000	82.52550000	84.01370000	84.55450000	85.50500000	86.55600000	87.60700000	88.65800000
113.23669612	115.57600000	117.58629111	114.17220000	111.88477000	116.05000000	112.32644688	114.56100000
1.5717900000	1.5717900000	1.5717900000	1.5717900000	1.5717900000	1.5717900000	1.5717900000	1.5717900000
1.9558000000	1.9558000000	1.9558000000	1.9558000000	1.9558000000	1.9558000000	1.9558000000	1.9558000000
1.9558000000	1.9558000000	1.9558000000	1.9558000000	1.9558000000	1.9558000000	1.9558000000	1.9558000000
0.4542550000	0.4542550000	0.4542550000	0.4542550000	0.4542550000	0.4542550000	0.4542550000	0.4542550000
6.8013402000	6.3818928000	6.1486267600	6.4982320000	6.3081000000	6.4780000000	6.2880000000	6.4000000000
1.5203700000	1.5633000000	1.5693700000	1.5633000000	1.5633000000	1.5633000000	1.5633000000	1.5633000000
216.5408000000	2412.8602000000	2393.4200000000	2393.4200000000	2393.4200000000	2393.4200000000	2393.4200000000	2393.4200000000
1.074747000000	1.080400000000	1.079320000000	1.078800000000	1.078800000000	1.078800000000	1.078800000000	1.078800000000
903.0103000000	871.7481000000	881.7981000000	883.7588000000	877.1427800000	877.1427800000	877.1427800000	877.1427800000
7.878700000000	7.879300000000	7.874400000000	7.872750000000	7.873790000000	7.873790000000	7.873790000000	7.873790000000

Once the 3 tabs of GAR Syensq AODOCs file have been updated close the file (changes are automatically saved).

Functions - Finance - Group Accounting & Reporting > All Documents > ExchRates 2021 SOLVAY

NEW ExchRates 2021 SOLVAY

ExchRates 2021 SOLVAY .xlsx

2021 - EXCHANGE RATES EVOLUTION

CURRENCY	DEC 2020		January		Average
	Average	End of Month	Average	End of Month	
1 EUR = x AED	4.19488000	4.50680000	4.47031000	4.45645000	4.45680000
1 EUR = x ARS	80.86803000	103.15160000	104.43437000	105.85830000	105.78200000
1 EUR = x AUD	1.05491000	1.50890000	1.57645000	1.58400000	1.56849000
1 EUR = x BAM	1.95580000	1.95580000	1.95580000	1.95580000	1.95580000
1 EUR = x BGN	1.95588280	1.95605000	1.95582500	1.95550000	1.95584750
1 EUR = x BHD	0.43063370	0.46255000	0.45883500	0.45745000	0.45746620
1 EUR = x BRL	5.89494630	6.37305000	6.51102500	6.64055000	6.52079750
1 EUR = x CAD	1.53007000	1.56365000	1.54937000	1.55400000	1.54232000
1 EUR = x CDF	2116.54000000	2412.86020000	2394.87000000	2391.31875000	2391.41000000
1 EUR = x CHF	1.07047000	1.09040000	1.07932000	1.07880000	1.08250000
1 EUR = x CLP	903.01035000	871.74810000	881.79615000	883.75885000	877.14276000
1 EUR = x CNH	7.87509000	7.97930000	7.87440000	7.82725000	7.83779000
1 EUR = x CNY	7.87485000	8.02400000	7.87499000	7.83855000	7.84095000
1 EUR = x COP	4217.41000000	4198.62330000	4252.78000000	4319.17630000	4276.11000000
1 EUR = x CZK	26.45802000	26.24150000	26.13670000	26.02000000	26.02463000
1 EUR = x DKK	7.45426000	7.44080000	7.43966000	7.43700000	7.43769000
1 EUR = x DZD	144.85520000	161.79185000	161.20660000	161.47035000	161.05640000
1 EUR = x EGP	18.05995000	19.30245000	19.11468000	19.06015000	19.03414000

Year rates | Monthly calculation | Quarterly calculation

5. Communication

Once exchange rates have been piloted to BFC_Prod_SCO and GAR Syensqo AODOCs file has been updated, BFC Admin should **communicate to Syensqo's Finance external partners** (outsourcing companies, Syensqo Actuaries, Businesses sold under TSA ...).

From February 2024, Syensqo end users are only notified in case of delay (Exchange rates not uploaded before 7pm CET on WD1)

The **distribution lists of external partners** is available in this file [BFC Syensqo Exc.rates file contacts \(2nd tab\)](#):

- **Note:** When someone (external partner) asks to be added to the distribution list, BFC Admin should check with Syensqo Consolidation team if the contact can be added and which is the validity period.
- **Mail to external partners** ([GAR Syensqo AODOCs file sent in attachment](#) as they have no access to =GAR Syensqo AODOC library):

Syensqo Group Exchange Rates - December 2023 00-BFC Admin/BFC recurring/SCO Exc Rates x



MATHIEU-STOÏSSICH, Caroline <caroline.mathieu-stoissich@solvay.com>

to SolvayConsoTeam, sfi.services, clement_grandvaux, Peru-MBU.Contabilidad-External, Eco-\$SBS, Tiago

Dear all,

Please find enclosed **Syensqo's** exchange rates for December 2023 (same as the ones of Solvay Group).

caroline

Caroline Mathieu-Stoissich
 GBS Finance Service Line
 BFC and MAGD Expert
 +33 6 07 62 81 01
 Silex2 9-13 Rue des Cuirassiers, 69003 Lyon
 France
[in](#) [X](#) [G+](#) [f](#) [v](#) [sol](#)
solvay.com

One attachment • Scanned by Gmail



END OF THIS PROCEDURE