

APAC - Company code extension

Status	Approved
Owner	JOSHI-ext, Aditya
Stakeholders	

Purpose

The purpose of this document is to define the conversion approach to create Functional Location in S/4 HANA.

Legacy Functional Locations is using a diverse range of formats across the different systems. There are instances where the same Functional Locations are duplicated within and across sources, with informal words. This results in data inconsistency. As per SyWay design, EAM Functional Locations will be standardized.

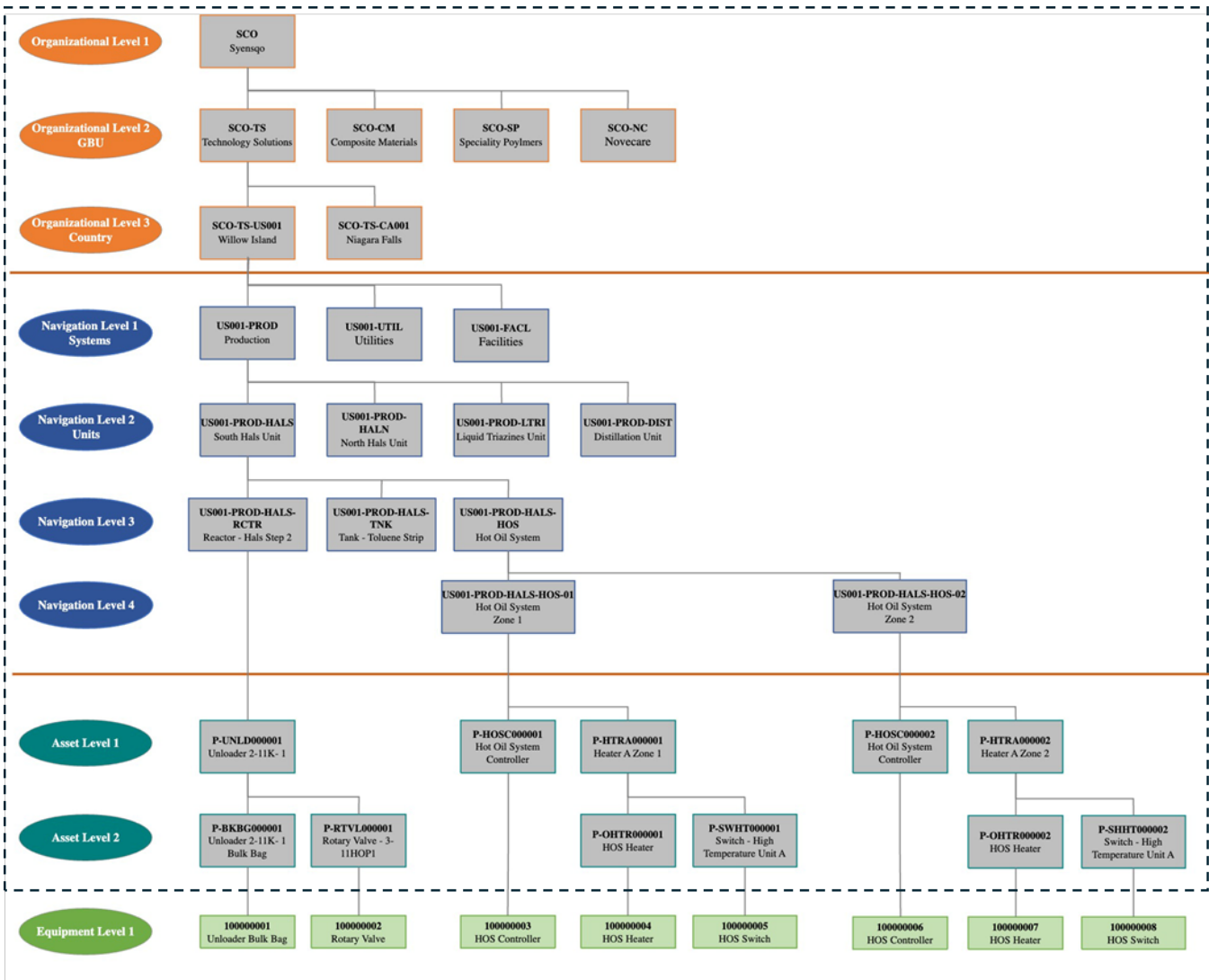
Conversion Scope

The scope of this document covers the approach for converting active Functional Location from Legacy Source Systems into S/4HANA following the Functional Location Master Data Design Standard.

Functional Locations are technical objects that structure the maintainable objects of a company. They can represent either the location of a maintainable item, or the maintainable item itself. A functional location does not normally change and will record the history of all equipment that is installed at that location.

Syensqo utilizes Functional Locations (FLOC) within the SAP S/4HANA system to define and manage its Asset Hierarchy. The asset hierarchy is structured across three main categories:

1. Organisational Level - This level represents the enterprise structure of Syensqo. It defines:
 - The Company
 - The Global Business Unit (GBU)
 - The Plant
2. Navigational Level - This level structures the hierarchy based on the functional or geographical layout of the plant. It defines:
 - Units within the Plant
 - Further sub-levels based on the physical location or logical grouping of assets, enabling effective representation and navigation within the hierarchy
3. Asset Level - This is the installation level where the actual Assets and Sub-assets are physically located. It includes:
 - Specific installation points for equipment
 - Maintainable assets themselves, serving as key points for maintenance planning and execution



The data from legacy system includes:

1. Functional Location with system status - Not 'INAC' (Inactive)

The data from legacy system excludes:

List of source systems and approximate number of records

Source	Scope	Source Approx No. of Records	Target System	Target Approx No. of Records
PF2, WP2	An initial extract will be provided to the business to evaluate. Additional data/records may be required and these will be constructed via DCT. Enrichment of in-scope data may be required and will be added via transformation rules (business/technical).	213,758	S/4HANA	213,758

Additional Information

Multi-language Requirement

1. Functional Location description will be made available in <list of languages>.
2. Multi language is supported for Functional Locations. <Applicable languages> can be created upon master data creation using English Logon.

Document Management

1. <Types of documents> documents currently attached to Functional Locations will be migrated to <TBD>.
2. Refer to the conversion approach for <TBD>.

Legal Requirement

Not Applicable

Special Requirements

Not Applicable

Target Design

EAM Functional Location Data strictly adheres to the Master Data Standard. The complete information of the key fields that hold the Functional Location information follows the Master Data Standard document <include hyperlink>.

The technical design of the target for this conversion approach.

Table	Field	Data Element	Field Description	Data Type	Length	Requirement

Data Cleansing

ID	Criticality	Error Message/Report Description	Rule	Output	Source System
1003-001	C1	Missing Functional Location Descriptions	Functional Location as per Relevancy Criteria where there are blank Functional Location Descriptions.	Functional Location Description	PF2, WP2
1003-002	C2	Functional Location Descriptions with Informal Words	Functional Location as per Relevancy Criteria which contain [Informal Words] in the Functional Location Description	Functional Location Description	PF2, WP2
1003-003	C1	Invalid, Inactive or no Cost Centres linked to Functional Location	Functional Location as per Relevancy Criteria assigned with a Cost Centre which does not belong below: 1. Cost Centre (FI) as per Relevancy Criteria	Cost Centre	PF2, WP2
1003-004	C1	Invalid, Inactive or no Catalog Profile s linked to Functional Location	Functional Location as per Relevancy Criteria assigned with a Catalog Profile which does not belong below: 1. Catalog Profile as per Relevancy Criteria	Catalog Profile	PF2, WP2
1003-005	C1	Invalid, Inactive or no Class linked to Functional Location	Functional Location as per Relevancy Criteria assigned with a Class which does not belong below: 1. Class as per Relevancy Criteria	Class	PF2, WP2
1003-006	C1	Invalid, Inactive or no Characteristic linked to Functional Location	Functional Location as per Relevancy Criteria assigned with a Characteristic which does not belong below: 1. Characteristic as per Relevancy Criteria	Characteristic	PF2, WP2
1003-007	C1	Invalid, Inactive or no Construction Type linked to Functional Location	Functional Location as per Relevancy Criteria assigned with a Construction Type which does not belong below: 1. Construction Type as per Relevancy Criteria	Construction Type	PF2, WP2
1003-008	C1	Invalid or Inactive Document Info Record linked to Functional Location	Functional Location as per Relevancy Criteria assigned with a Document Info Record which does not belong below: 1. Document Info Record as per Relevancy Criteria	Document Info Record	PF2, WP2
1003-009	C1	Invalid or Inactive Material linked to Functional Location	Functional Location as per Relevancy Criteria assigned with a Material which does not belong below: 1. Material Master (S2P) as per Relevancy Criteria	Material	PF2, WP2
1003-010	C1	Invalid, Inactive or no Work Centres linked to Functional Location	Functional Location as per Relevancy Criteria assigned with a Work Centre which does not belong below: 1. Work Centre as per Relevancy Criteria	Work Centre	PF2, WP2
1003-011	C1	Invalid or no Planner Group linked to Functional Location	Functional Location as per Relevancy Criteria with no Planner Group Assigned or Invalid Planner Group (T024I)	Planner Group	PF2, WP2
1003-012	C1	Invalid or no Technical Object Type linked to Functional Location	Functional Location as per Relevancy Criteria with no Technical Object Type Assigned or Invalid Technical Object Type (T370K)	Technical Object Type	PF2, WP2
1003-013	C1	Maintainable physical assets created as Functional Location (than Equipment)		Functional Location	PF2, WP2
1003-014	C1	Review all Functional Location / Equipment sitting under "ZDELETE". If these data set is not used / not needed, the system status should be set to INAC.		System Status	PF2, WP2
1003-015	C1	Invalid, Inactive or no Superior Functional Location linked to Functional Location	Functional Location as per Relevancy Criteria with no Superior Functional Location Assigned or with a Superior Functional Location which does not belong below: 1. Functional Location as per Relevancy Criteria	Superior Functional Location	PF2, WP2
1003-016	C1	Invalid, Inactive or no Maintenance Plans linked to Functional Location	Functional Location as per Relevancy Criteria with no Maintenance Plan Linked or with a Maintenance Plan which does not belong below: 1. Maintenance Plan as per Relevancy Criteria	Maintenance Plan	PF2, WP2

1003-017	C1	Invalid or Inactive Business Partner (Customer) linked to Functional Location	Functional Location as per Relevancy Criteria assigned with a Business Partner / Customer which does not belong below: 1. Business Partner FLCU01 (SD) as per Relevancy Criteria	Business Partner (Customer)	PF2, WP2
1003-018	C1	Invalid or Inactive WBS linked to Functional Location	Functional Location as per Relevancy Criteria assigned with a WBS which does not belong below: 1. Work Breakdown Structure (PS) as per Relevancy Criteria	Work Breakdown Structure	PF2, WP2
1003-019	C2	Material Types of Construction Types are non-Maintenance Assembly	Functional as per Relevancy Criteria where the Construction Type Assigned has a non-Maintenance Assembly Material Type* QF2: ZZ90-Maintenance Assembly WQ2: ZIBA-Maintenance Assembly	Construction Type	PF2, WP2
1003-020	C1	Invalid or Inactive Bill of Material linked to Functional Location	Functional Location as per Relevancy Criteria assigned with a Bill of Material which does not belong below: 1. Bill of Material as per Relevancy Criteria	Bill of Material	PF2, WP2
1003-021	C1	Functional Location Company Code incorrect.	Functional Location as per Relevancy Criteria with Invalid Company Code (T001)	Company Code	PF2, WP2
1003-022	C1	Functional Location Technical object authorization group incorrect.	Functional Location as per Relevancy Criteria with Invalid Authorization Group (T370F)	Authorization Group	PF2, WP2
1003-023	C1	Functional Location Currency Codes incorrect.	Functional Location as per Relevancy Criteria with Invalid Currency Codes (TCURC)	Currency	PF2, WP2
1003-024	C2	Functional Location Planning Plant and Maintenance Plant are not the same.	Functional Location as per Relevancy Criteria with Planning Plant <> Maintenance Plant	Maintenance Plant, Planning Plant	PF2, WP2
1003-025	C1	ABC Indicator missing on Functional Location	Functional Location as per Relevancy Criteria where ABC Indicator is blank	ABC Indicator	PF2, WP2

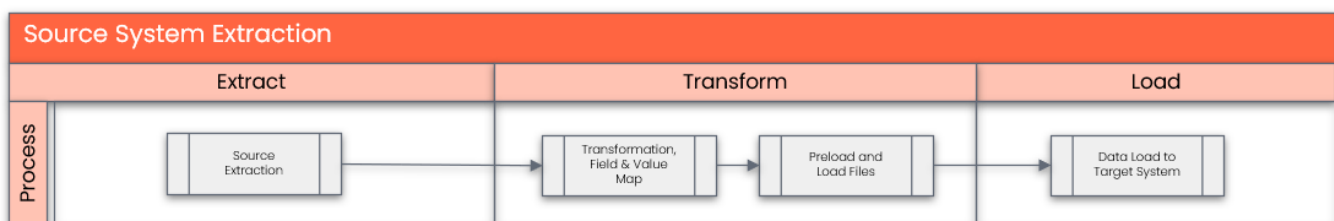
Informal Words **

*DNU	Delete	donot	Formerly	Old #
..	Deletion	DONT USE	From	Old[]
/	DELISTED	DON'T USE	Incorrect	PLEASE USE
?	Discontinued	Dup Use	Invalid	Pls Use
@	Disposable	DUPLICATE	New	Previously
^	DNU	-DUPLICATE	NOT ACTIVE	Replace
+	Do Not	DUPLICATION	not in use	Replaced
++	Do Not Re	Duplicidad	Not Used	RESERVED
£	Do Not Sell	Duplikat	NOT VALID	Retired
Defective	Do Not Use	Former	Obsolete	ZZDEL

Conversion Process

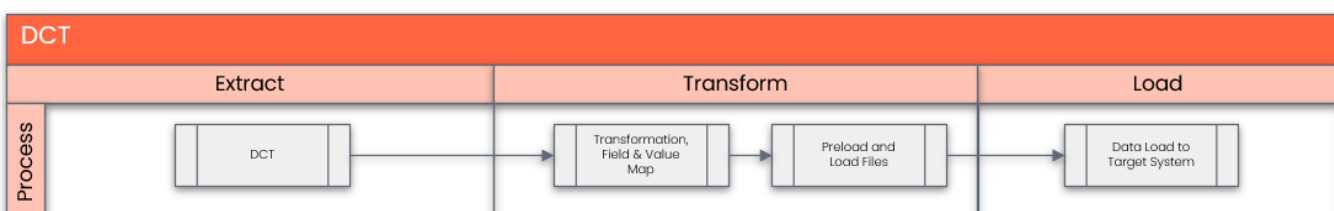
Conversion will involve both Source System Extraction as well as using DCT (Data Collection Template) -

The high-level process for Source System Extraction is represented by the diagram below:



For sites that are not on SAP-PF2 and WP2 systems, collection will be done manually in the data collection template.

The high-level process for DCT is represented by the diagram below:



Data Privacy and Sensitivity

<To add more info later if applicable>

Extraction

Extract data from a source into . There are 2 possibilities:

1. The data exists. connects to the source and loads the data into . There are 3 methods:
 - a. Perform full data extraction from relevant tables in the source system(s).
 - b. Perform extraction through the application layer.
 - c. Only if ; cannot connect to the source, data is loaded to the repository from the provided source system extract/report.
2. The data does not exist (or cannot be converted from its current state). The data is manually collected by the business directly in . This is to be conducted using DCT (Data Collection Template) in

The agreed Relevancy criteria is applied to the extracted records to identify the records that are applicable for the Target loads

Extraction Run Sheet

Req #	Requirement Description	Team Responsible
1	Extract data from source system based on relevancy rule	SyWay Data Team
2	Google Sheet report pre-populated with PF2 and WP2 information to be generated based on relevancy criteria.	SyWay Data Team

Selection Screen

Selection Ref Screen	Parameter Name	Selection Type	Requirement	Value to be entered/set
Not Applicable				

Data Collection Template (DCT)

Target Ready Data Collection Template will be created for Functional Location data with exception of some fields which require transformation as mentioned in the transformation rule.

Functional Location DCT Rules <To add more info below later>

Field Name	Field Description	Rule

Extraction Dependencies

Item #	Step Description	Team Responsible
1	Ensure Syniti has the necessary connection and access to legacy servers	Data
2	Ensure that the necessary cleansing activities in legacy sources are complete	Data / Business
3	Ensure that create, change and deletion of master data is freeze in legacy Production system	Lega

Transformation

The Target fields are mapped to the applicable Legacy field that will be its source, this is a 3-way activity involving the Business, Functional team and Data team. This identifies the transformation activity required to allow to make the data Target ready:

1. Perform value mapping and data transformation rules.
 - a. Legacy values are mapped to the to-be values (this could include a default value)
 - b. Values are transformed according to the rules defined in

2. Prepare target-ready data in the structure and format that is required for loading via prescribed Load Tool. This step also produces the load data ready for business to perform Pre-load Data Validation

Transformation Run Sheet

Item #	Step Description	Team Responsible
1	Obtain DCT Sign-off from Business	SyWay A2D Data Team
2	<Add steps from Syniti Migrate here>	SyWay A2D Data Team
3	Review and Validate Error and Preload Reports	SyWay A2D Data Team
4	Generate Load Files	SyWay A2D Data Team

Transformation Rules

Rule #	Source system	Source Table	Source Field	Source Description	Target System	Target Table	Target Field	Target Description	Transformation Logic

Transformation Mapping

Mapping Table Name	Mapping Table Description

Transformation Dependencies

List the steps that need to occur before transformation can commence

Item #	Step Description	Team Responsible
1	Ensure DCT tables completeness	SyWay A2D Data Team
2	Value Mappings are according to the latest design - <List of Value Mappings>	SyWay A2D Data Team

Pre-Load Validation

Project Team

Completeness

Task	Action
Verify Record Count	SyWay A2D Data Team to verify that the total number of relevant records from the Source Extract and DCT is equal to the total number of records in the Preload and Load Sheets.

Accuracy

Task	Action
------	--------

Conversion Accuracy	SyWay A2D Data Team to verify that all fields below meet pass the checks: <ol style="list-style-type: none"> 1. Mandatory Fields 2. Field and Value Mapping Correctness 3. Null Checks 4. Text Length Checks
Review Error Reports	Review and correct the errors. Achieve a zero-error record count as much as possible. Raise defects for data remediated and requiring a correction in the source data.

Business

Completeness

Task	Action
Verify Record Count	Business Data Owner/s to verify that the total number of relevant records from the Source Extract and DCT is equal to the total number of records in the Preload and Load Sheets.

Accuracy

Task	Action
Conversion Accuracy	Business Data Owner/s to verify that all the data in the load table/file is accurate as per endorsed transformation/mapping rules (and signed-off Source Extract & DCT data).

Load

The load process includes:

1. Execute the automated data load into target system using load tool or product the load file if the load must be done manually
2. Once the data is loaded to the target system, it will be extracted and prepared for Post Load Data Validation

Load Run Sheet

Item #	Step Description	Team Responsible

Load Phase and Dependencies

Configuration

Item #	Configuration Item
1	Structure Indicators with edit masks
2	Functional Location Category
3	Object Type
4	Weight Unit
5	Currency
6	Country of manufacturer
7	Maintenance Plant
8	Plant Section
9	ABC indicator

10	Planning Plant
11	Planner Group
12	Catalog Profile
13	Location

Conversion Objects

Object #	Preceding Object Conversion Approach
1006	Work Centre
1074	Cost Center
1001	BOM
1015	Characteristics
1009	Class
1008	Catalog Profile
1013	Reference Functional Location

Error Handling

Error Type	Error Description	Action Taken
Configuration	Invalid Structure indicator missing	Engage Functional team to expedite and fix the error in the system
Configuration	Invalid Functional location cat missing	Engage Functional team to expedite and fix the error in the system
Configuration	Invalid Object Type	Engage Functional team to expedite and fix the error in the system
Configuration	Invalid Weight Unit	Engage Functional team to expedite and fix the error in the system
Configuration	Invalid Currency	Engage Functional team to expedite and fix the error in the system
Configuration	Invalid Country of Manufacturer	Engage Functional team to expedite and fix the error in the system
Configuration	Invalid Maintenance Plant	Engage Functional team to expedite and fix the error in the system
Configuration	Invalid Plant Section	Engage Functional team to expedite and fix the error in the system
Configuration	Invalid ABC indicator	Engage Functional team to expedite and fix the error in the system
Configuration	Invalid Planning Plant	Engage Functional team to expedite and fix the error in the system
Configuration	Invalid Planner Group	Engage Functional team to expedite and fix the error in the system
Configuration	Invalid catalog profile	Engage Functional team to expedite and fix the error in the system
Configuration	Invalid Location	Engage Functional team to expedite and fix the error in the system
Invalid Data	Invalid Cost Centre	Expedite whether the master data is changed in the system
Invalid Data	Invalid Class	Expedite whether the master data is changed in the system
Invalid Data	Invalid Work Centre	Expedite whether the master data is changed in the system
Invalid Data	Invalid BOM	Expedite whether the master data is changed in the system

Post-Load Validation

Project Team

Completeness

Task	Action
Verify Count	Data team to verify the record count created in target S/4 HANA by accessing post load reports in dspMigrate or standard reports from S/4 HANA.
Verify Logs	Check if there is data that failed to load and perform the necessary actions (e.g. register as post load issue, or attempt to load the record again, etc.).

Accuracy

Task	Action
Conversion Accuracy	Data team to verify that the Measuring Point data in target S/4 HANA were loaded correctly via dspMigrate post load reports or standard reports from S/4 HANA.

Business

Completeness

Task	Action
Verify Count	Download Post Load Reports from dspMigrate and verify that the record count loaded in the target S/4 HANA is the same count as of the endorsed load file.

Accuracy

Task	Action
Conversion Accuracy	Verify that the Measuring Point data in target S/4 HANA were loaded correctly via dspMigrate post load reports or standard reports from S/4 HANA.

Key Assumptions

- Master Data Standard is up to date as on the date of documenting this conversion approach and data load.
- Functional Location is in scope based on data design and any exception requested by business.
- All data cleansing and preparation has been completed.

See also

Change log

Version	Published	Changed By	Comment
CURRENT (v. 4)	Apr 07, 2026 07:20	JOSHI-ext, Aditya	
v. 440	Apr 06, 2026 10:52	PUN-ext, Eddy	
v. 439	Apr 01, 2026 15:44	JOSHI-ext, Aditya	
v. 438	Apr 01, 2026 15:06	JOSHI-ext, Aditya	
v. 437	Apr 01, 2026 14:54	JOSHI-ext, Aditya	
v. 436	Apr 01, 2026 09:05	JOSHI-ext, Aditya	
v. 435	Apr 01, 2026 08:12	PUN-ext, Eddy	
v. 434	Mar 31, 2026 15:51	JOSHI-ext, Aditya	
v. 433	Mar 31, 2026 14:41	JOSHI-ext, Aditya	
v. 432	Mar 31, 2026 09:29	JOSHI-ext, Aditya	





[Go to Page History](#)

Workflow history

Title	Last Updated By	Updated	Status
There are no pages at the moment.			

Workflow history

This view shows the 5 most recent entries. The complete workflow log is available from the 'Document Activity' menu item.

Jul 18, 2019	Actor	Type	Activity	Version
Published	Inês Santos	State	changed state to Published at 2:03 pm (Space Initialization)	v4
For Review	Inês Santos	State	gave <i>Approvers</i> approval at 2:03 pm	
Jun 07, 2019				
	 Nuttaporn Niensupornphand	State	assigned approval <i>Reviewers</i> to  Nuttaporn Niensupornphand at 6:02 am	
		State	changed state to For Review at 6:02 am	v4
May 24, 2019				
Draft	 Nuttaporn Niensupornphand	Edit	updated the page at 9:22 am	
	 Nuttaporn Niensupornphand	State	changed state to Draft at 7:22 am	v2