

MM01 - Create Material

Tasks to be completed when documenting an SAP Transaction, Report or Message code.

1. Title of the page = SAP Transaction code, SAP Report or SAP Message

2. Add the following Labels, respectively:

- SAP Transaction => "sap_transaction", Transaction code "xxxx"
- SAP Report => "sap_report"
- SAP Message => "sap_msg"

3. On the left section, describe the steps. On the right section, insert respective print screens and additional guidelines, if needed (e.g. Main selections of the transaction...)

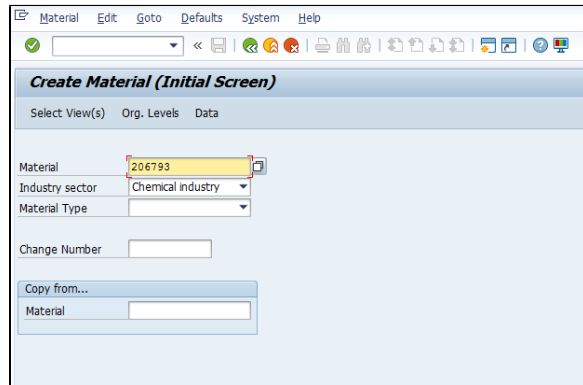
STEP 1

Go to transaction MM01

 MM01 - Create Material: Initial Screen

1. Insert the material number

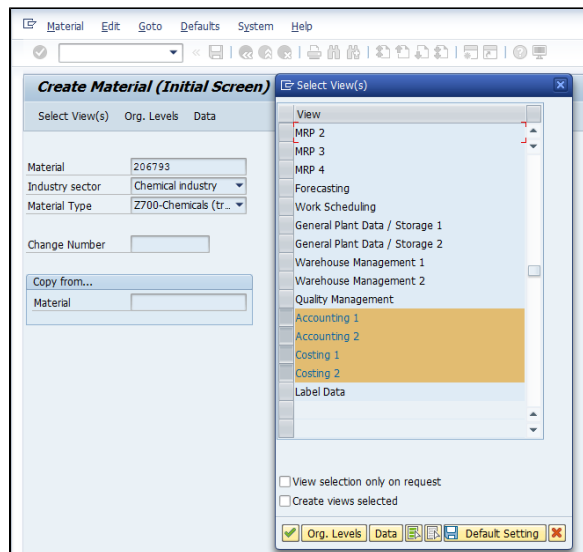
and 



STEP 2

Select Views Accounting 1 and 2 & Costing 1 and 2





STEP 3

Enter the plant code

Enter ↵

and

STEP 4

Creation of the Accounting 1 (mandatory fields are marked with *)

Fill the following fields:

1. Valuation Class *
2. Valuation Category - To be used only in the cases where we need to create a specific view "Produced" or "Purchased"
3. ML active *
4. Price Determination *
 - 2 (Transaction-Based)
 - 3 (Single-/Multilevel)
5. Price Control *
 - S (Standard price)
 - V (Moving average price)
6. Price Unit *
 - By default the unit used is 1000
7. Per unit Price (Moving average Price **MAP**)

and

Enter ↵

Fill the following fields::

1. Valuation Class *
2. ~~Valuation Category (not relevant for WP1)~~

3. ML active (only relevant for the companies using ML - Brazil + Korea)
4. Price Determination * (only relevant for the plants with ML active. For all the others it should be kept blank)
 - 2 (Transaction-Based)
 - 3 (Single-/Multilevel)
5. Price Control *
 - S (Standard price)
 - V (Moving average price)
6. Price Unit *
 - By default the unit used is 1000
7. Per unit Price (Moving average Price **MAP**)

and 

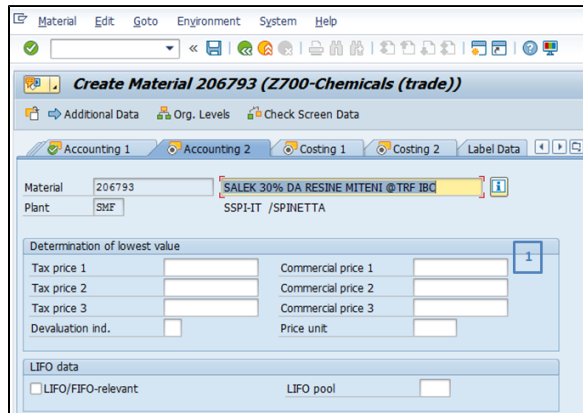
STEP 5

Creation of Accounting 2

1. Commercial Price 1

and 

- *Note: This field is only used for WP1 materials*



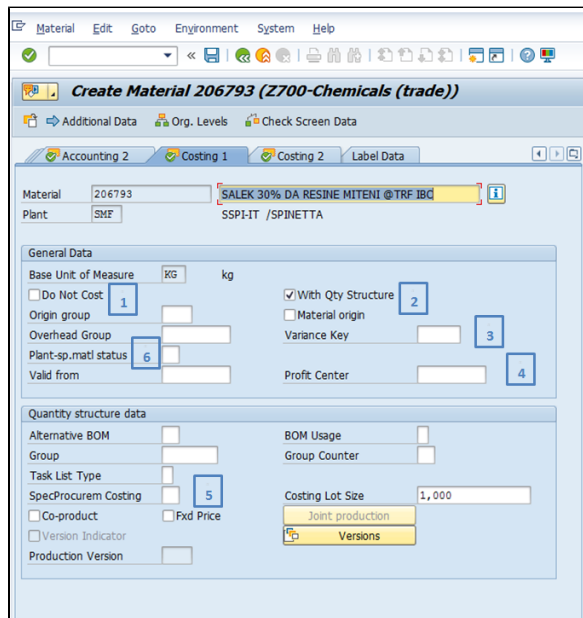
STEP 6

Creation of Costing 1 (mandatory fields are marked with *)

Fill the following fields:

1. Do not cost - Normally this field is flagged only for materials with Valuation class Z101
2. With Qty Structure & Material Origin *
3. ~~Variance Key~~ (not relevant for PF1)
4. Profit Center *

In case it's not given by the controller, please check the rules below to suggest the PC to the controller



STEP 1

Log is in English to start with the creation of the profit center in English.

SAP

✓ [dropdown arrow]

Mandant: 400

Utilisateur: RFC_IDM8

Langue de travail: EN

Start the transaction using the menu path or transaction code

KES3 - Display

- SAP Menu
 - Office
 - Cross-Application Components
 - Logistics
 - Accounting
 - Financial Accounting
 - Financial Supply Chain Management
 - Controlling
 - Cost Element Accounting
 - Cost Center Accounting
 - Internal Orders
 - Activity-Based Costing
 - Product Cost Controlling
 - Profitability Analysis
 - Profit Center Accounting
 - Master Data
 - Profit Center
 - Individual Processing
 - KES1 - Create
 - KES2 - Change
 - KES3 - Display**
 - KES4 - Delete
 - 6KEA - Display Changes

STEP 2

Enter the code of the profit center and enter

The master data of the profit center is displayed

Display Profit Center

Master Data

Profit Center: **F3HNGBAJX1**

Display Profit Center

Drilldown Analysis Period

General Data

Profit Center: **F3HNGBAJX1**

Controlling Area: CHEF ERP_SOLVAY

Validity Period: 01.12.2015 To 31.12.9999

Basic Data Indicators Company Codes Address Communication History

Descriptions

Profit Center	F3HNGBAJX1	Status	Active
Analysis Period	01.12.2015	to	31.12.9999
Name	73H NGBA 2337V		
Long Text	HF 100% - C.JUAREZ - BULK		

Basic Data

User Responsible: [field]

Person Respons.: X

Department: [field]

Related contents

- Rules - PF2 - Profit Center Reporting codification
- Rules - PF2 - Profit Center Standard hierarchy
- Rules - Profit center Codification
- Rules - Profit Center Group
- Rules - Profit center person responsible

5. Special Procurement Costing
6. Plant -sp -material status - If necessary to block the material for some reason

and 

Fill the following fields:

1. Do not cost - Only when requested
2. With Qty Structure & Material Origin *
3. Variance Key - Mandatory to use Z_Z001 for all finished goods produced
4. Profit Center *

In case it's not given by the controller, please check the rules below to suggest the PC to the controller

Error: You are trying to view a page which does not yet have a published version available and you do not have permission to view draft versions.

5. Special Procurement Costing
6. Plant -sp -material status - Make sure that the status "Z1" is applied until the Std Price is released

and 

STEP 7

Creation of Costing 2

1. Planned Price

and 

- *Note: This field is only used for PF1 materials*

Material Edit Goto Environment System Help

Create Material 206793 (Z700-Chemicals (trade))

Additional Data Org. Levels Check Screen Data

Costing 1 Costing 2 Label Data

Material 206793 SALEK 30% DA RESINE MITENI @TRF IBC
 Plant SMF SSPI-IT /SPINETTA

Standard Cost Estimate


Cost Estimate	Future	Current	Previous
Period / Fiscal Year	0	0	0
Planned price		0,00	0,00
Standard price		0,00	

Planned prices

Planned price 1		Planned price date 1	
Planned price 2		Planned price date 2	
Planned price 3		Planned price date 3	

Valuation Data

Valuation Class	Z100	Valuation Category	
VC: Sales order stk		Proj. stk val. class	
Price Control	V	Current period	5 2019
Price Unit	1	Currency	EUR
Moving price		Standard price	

Then save 

Workflow history

This view shows the 5 most recent entries. The complete workflow log is available from the 'Document Activity' menu item.

May 30, 2019	Actor	Type	Activity	Version
Published	GONCALO, Ana Catarina	Edit	updated the page at 5:36 pm Other contributors: 	
	PEREIRA DINIZ, Sandra	State	changed state to Published at 5:06 pm	v21
Draft	PEREIRA DINIZ, Sandra	State	gave <i>Approvers</i> approval at 5:06 pm	
	GONCALO, Ana Catarina	State	changed state to Draft at 5:05 pm	v20
Published	PEREIRA DINIZ, Sandra	State	changed state to Published at 4:50 pm	v19