

MM01 - Create Material

Tasks to be completed when documenting an SAP Transaction, Report or Message code.

1. Title of the page = SAP Transaction code, SAP Report or SAP Message

2. Add the following Labels, respectively:

- SAP Transaction => "sap_transaction", Transaction code "xxxx"
- SAP Report => "sap_report"
- SAP Message => "sap_msg"

3. On the left section, describe the steps. On the right section, insert respective print screens and additional guidelines, if needed (e.g. Main selections of the transaction...)

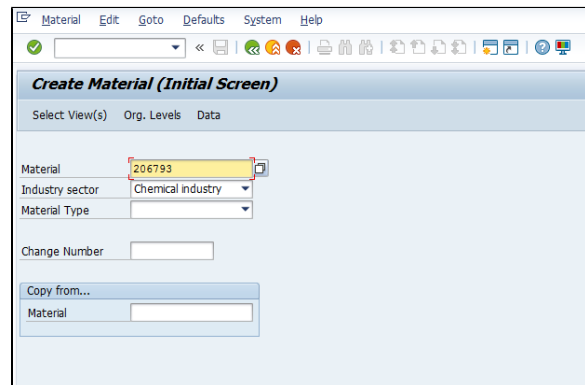
STEP 1

Go to transaction MM01

 MM01 - Create Material: Initial Screen

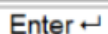
1. Insert the material number

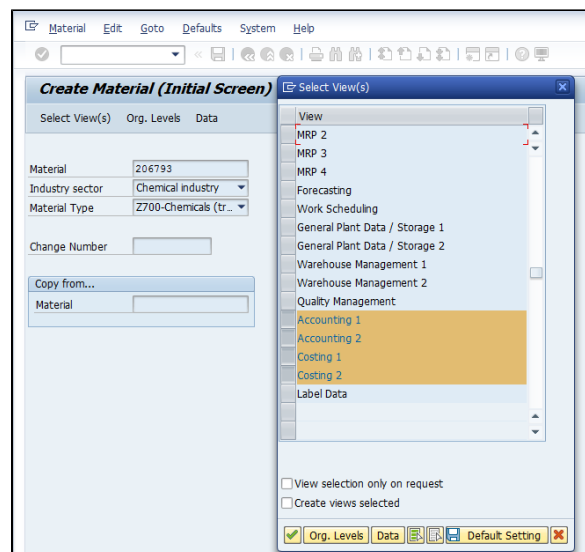
and 



STEP 2

Select Views Accounting 1 and 2 & Costing 1 and 2



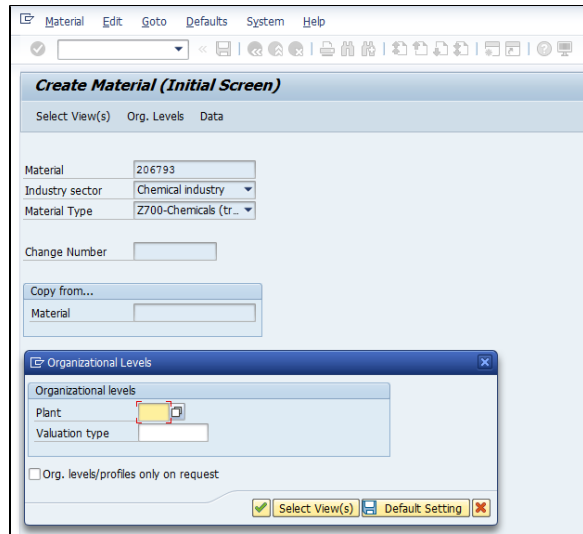


STEP 3

Enter the plant code



and



STEP 4

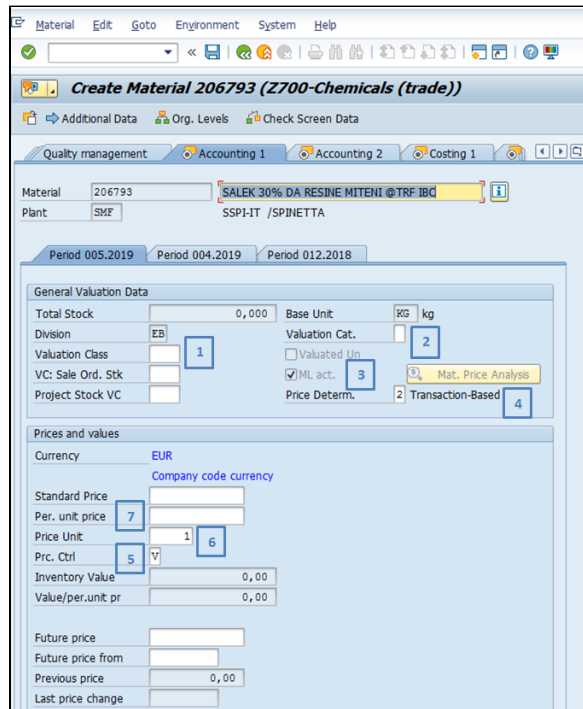
Creation of the Accounting 1 (mandatory fields are marked with *)

Fill the following fields:

1. Valuation Class *
2. Valuation Category - To be used only in the cases where we need to create a specific view "Produced" or "Purchased"
3. ML active *
4. Price Determination *
 - 2 (Transaction-Based)
 - 3 (Single-/Multilevel)
5. Price Control *
 - S (Standard price)
 - V (Moving average price)
6. Price Unit *
 - By default the unit used is 1000
7. Per unit Price (Moving average Price **MAP**)



and



Fill the following fields::

1. Valuation Class *
2. ~~Valuation Category (not relevant for WP1)~~

3. ML active (only relevant for the companies using ML - Brazil + Korea)
4. Price Determination * (only relevant for the plants with ML active. For all the others it should be kept blank)
 - 2 (Transaction-Based)
 - 3 (Single-/Multilevel)
5. Price Control *
 - S (Standard price)
 - V (Moving average price)
6. Price Unit *
 - By default the unit used is 1000
7. Per unit Price (Moving average Price **MAP**)

and 

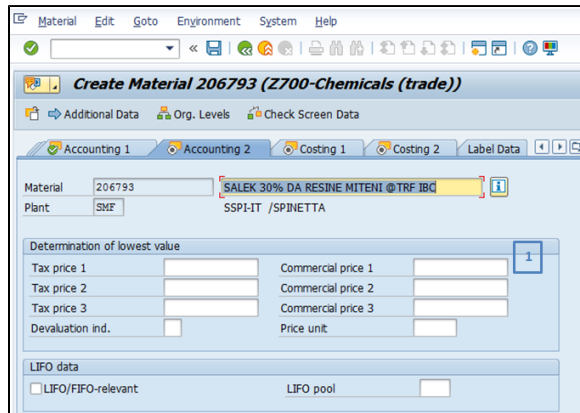
STEP 5

Creation of Accounting 2

1. Commercial Price 1

and 

- *Note: This field is only used for WP1 materials*



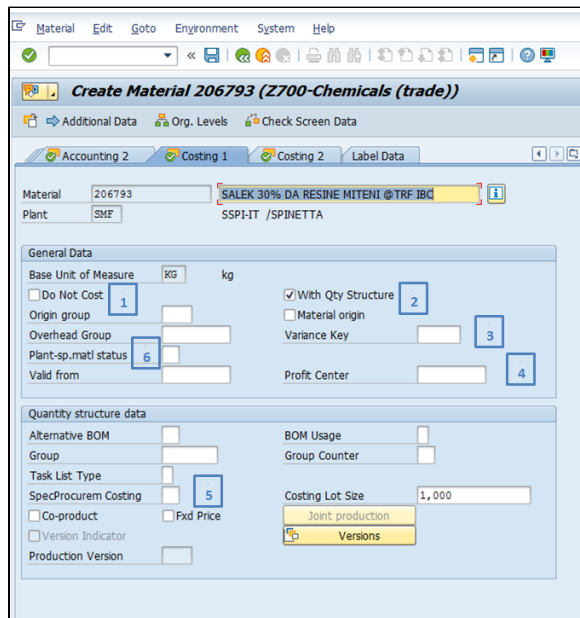
STEP 6

Creation of Costing 1 (mandatory fields are marked with *)

Fill the following fields:

1. Do not cost - Normally this field is flagged only for materials with Valuation class Z101
2. With Qty Structure & Material Origin *
3. ~~Variance Key~~ (not relevant for PF1)
4. Profit Center *

In case it's not given by the controller, please check the rules below to suggest the PC to the controller



STEP 1

Log is in English to start with the creation of the profit center in English.

SAP

✓ [dropdown]

Mandant: 400

Utilisateur: RFC_IDM8

Langue de travail: EN

Start the transaction using the menu path or transaction code

KES3 - Display

- SAP Menu
 - Office
 - Cross-Application Components
 - Logistics
 - Accounting
 - Financial Accounting
 - Financial Supply Chain Management
 - Controlling
 - Cost Element Accounting
 - Cost Center Accounting
 - Internal Orders
 - Activity-Based Costing
 - Product Cost Controlling
 - Profitability Analysis
 - Profit Center Accounting
 - Master Data
 - Profit Center
 - Individual Processing
 - KES1 - Create
 - KES2 - Change
 - KES3 - Display**
 - KES4 - Delete
 - 6KEA - Display Changes

STEP 2

Enter the code of the profit center and enter

The master data of the profit center is displayed

Display Profit Center

Master Data

Profit Center: F3HNGBAJX1

Display Profit Center

Drilldown Analysis Period

General Data

Profit Center: F3HNGBAJX1

Controlling Area: CHEF ERP_SOLVAY

Validity Period: 01.12.2015 To 31.12.9999

Basic Data Indicators Company Codes Address Communication History

Descriptions

Profit Center	F3HNGBAJX1	Status	Active
Analysis Period	01.12.2015	to	31.12.9999
Name	73H NGBA 2337V		
Long Text	HF 100% - C.JUAREZ - BULK		

Basic Data

User Responsible: [field]

Person Respons.: X

Department: [field]

Related contents

- Rules - PF2 - Profit Center Reporting codification
- Rules - PF2 - Profit Center Standard hierarchy
- Rules - Profit center Codification
- Rules - Profit Center Group
- Rules - Profit center person responsible

Workflow history

This view shows the 5 most recent entries. The complete workflow log is available from the 'Document Activity' menu item.

Nov 23, 2018	Actor	Type	Activity	Version
Published	R OLLIER, Charlotte	Edit	created the page at 5:59 pm	
		State	changed state to Published at 5:00 pm	v1
Draft	R OLLIER, Charlotte	State	gave Approvers approval at 5:00 pm	
		State	changed state to Draft at 4:52 pm	v1

5. Special Procurement Costing
6. Plant -sp -material status - If necessary to block the material for some reason

and 


Fill the following fields:

1. Do not cost - Only when requested
2. With Qty Structure & Material Origin *
3. Variance Key - Mandatory to use Z_Z001 for all finished goods produced
4. Profit Center *

In case it's not given by the controller, please check the rules below to suggest the PC to the controller

STEP 1

Log is in English to start with the creation of the profit center in English.




✓

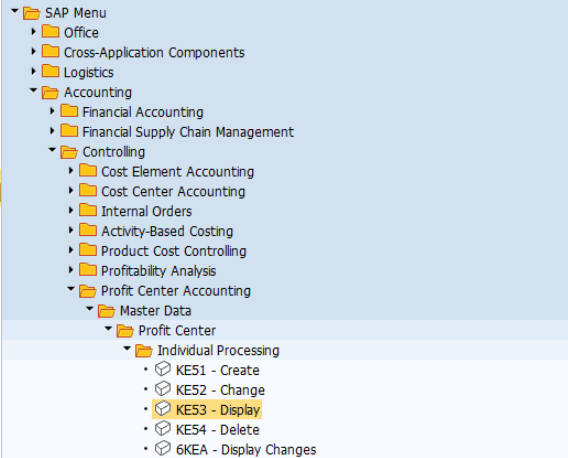
Mandant





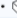
Utilisateur

Langue de travail

Start the transaction using the menu path or transaction code

 **KE53 - Dis**



- ▾ SAP Menu
 - ▾ Office
 - ▾ Cross-Application Components
 - ▾ Logistics
 - ▾ Accounting
 - ▾ Financial Accounting
 - ▾ Financial Supply Chain Management
 - ▾ Controlling
 - ▾ Cost Element Accounting
 - ▾ Cost Center Accounting
 - ▾ Internal Orders
 - ▾ Activity-Based Costing
 - ▾ Product Cost Controlling
 - ▾ Profitability Analysis
 - ▾ Profit Center Accounting
 - ▾ Master Data
 - ▾ Profit Center
 - ▾ Individual Processing
 -  KE51 - Create
 -  KE52 - Change
 -  **KE53 - Display**
 -  KE54 - Delete
 -  6KEA - Display Changes

STEP 2

Enter the code of the profit center and enter

The master data of the profit center is displayed

Display Profit Center

Master Data

Profit Center

Display Profit Center

 Drilldown  Analysis Period

General Data

Profit Center

Controlling Area ERP_SOLVAY

Validity Period To

Basic Data | Indicators | Company Codes | Address | Communication | History

Descriptions


Profit Center	F3HNGBAJX1	Status	Active
Analysis Period	01.12.2015	to	31.12.9999
Name	73H NGBA 2337V		
Long Text	HF 100% - C.JUAREZ - BULK		

Basic Data

User Responsible

Person Respons.

Department

 **Related contents**

- [Rules - PF2 - Profit Center Reporting codification](#)
- [Rules - PF2 - Profit Center Standard hierarchy](#)
- [Rules - Profit center Codification](#)
- [Rules - Profit Center Group](#)
- [Rules - Profit center person responsible](#)

Workflow history

This view shows the 5 most recent entries. The complete workflow log is available from the 'Document Activity' menu item.

Nov 23, 2018	Actor	Type	Activity	Version
Published	R OLLIER, Charlotte	Edit	created the page at 5:59 pm	
		State	changed state to Published at 5:00 pm	v1
Draft	R OLLIER, Charlotte	State	gave Approvers approval at 5:00 pm	
		State	changed state to Draft at 4:52 pm	v1

5. Special Procurement Costing
6. Plant -sp -material status - Make sure that the status "Z1" is applied until the Std Price is released

and 

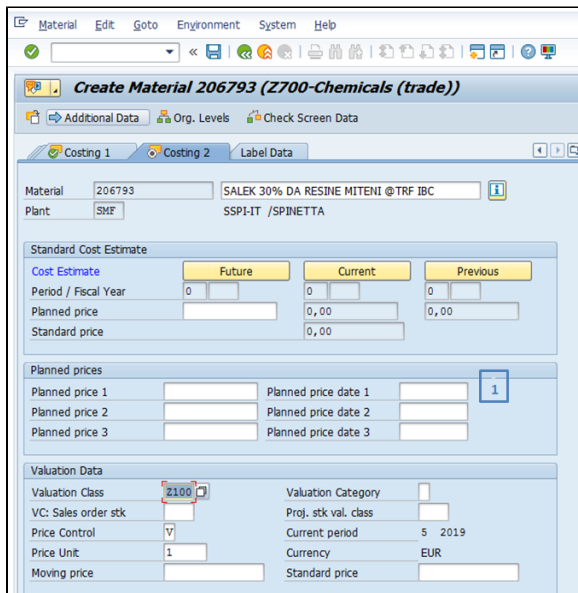
STEP 7

Creation of Costing 2

1. Planned Price

and 

- Note: This field is only used for PF1 materials*



The screenshot shows the SAP 'Create Material' transaction for material 206793. The 'Planned prices' section has three rows, with the first row containing a '1' in a small box. The 'Valuation Data' section shows 'Valuation Class' set to 'Z100'.

Then save 