

APAC - PF2 - Material code creation (for plant OSF)

- 1. Scope and objective 1
- 2. Request form 1
- 3. How to create material for plant OSF in PF2_050 1
- 4. How to create material in MRP and Accounting views 10

1. Scope and objective

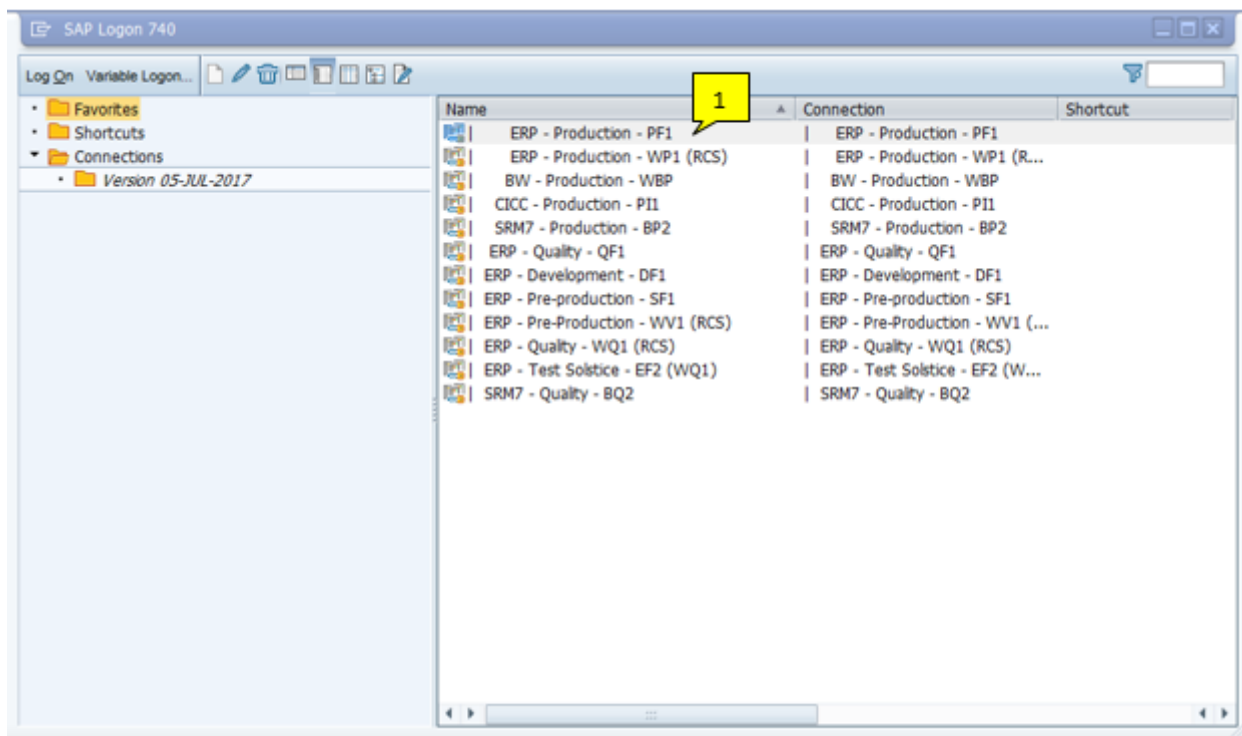
This OP shows how to create material for plant OSF in Korea. This type of request hardly comes to team.

2. Request form

The request comes from Fresh Desk ticket with the request form below

SOLVAY M-code creation request form / 신규자재 품번 등록 요청서			
	Name	Date	Signature
N+1 Manager:	박용환	10/AUG/18	[Signature]
Requestor:	최정호	10/AUG/18	[Signature]
1. Item Name : 자재 품명 (영어로 기입)	PROFIBUS-DPV1 Comm. ALP111-500 Module		
2. Quantities Unit : 단위 (PC, KG 등)	PC		
3. expected unit price : 단위 당 단가(예상금액)	₩ 5,500,000WON		

3. How to create material for plant OSF in PF2_050

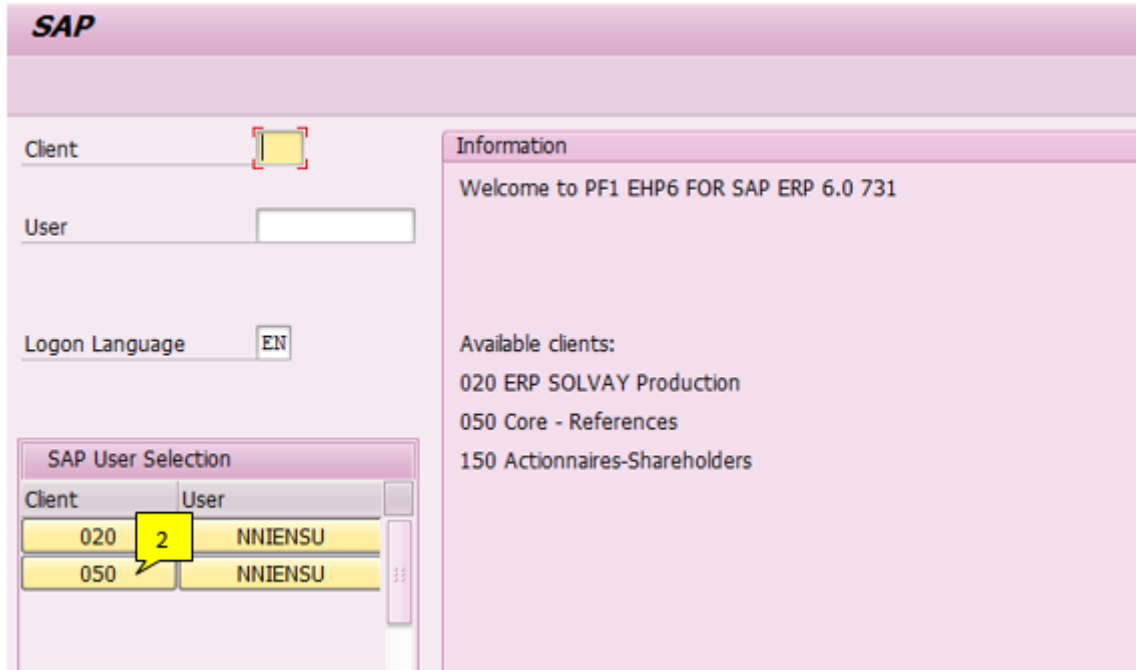


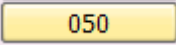
Main activities

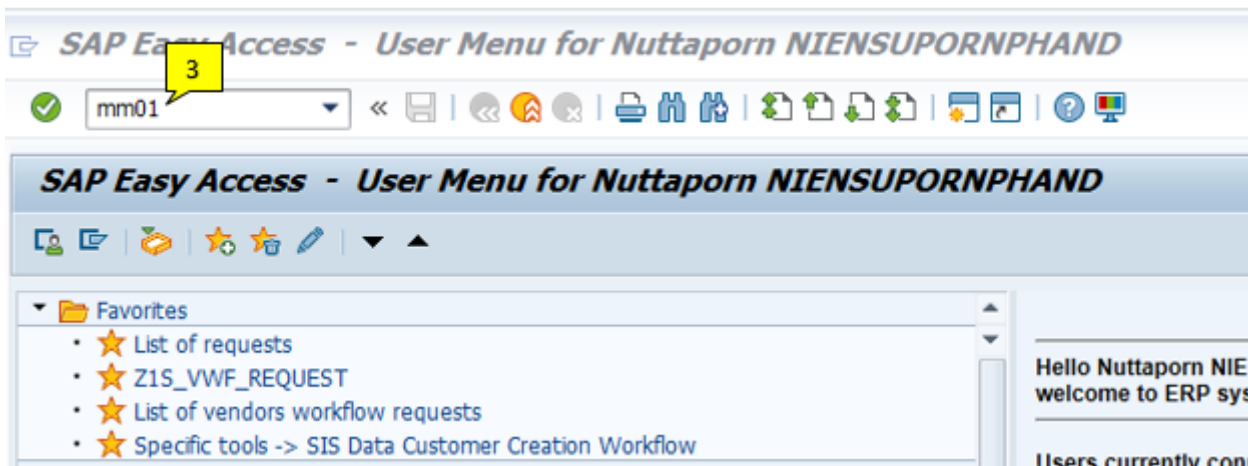
Tips/Best practices

Key points

1	Select "ERP – Production – PF2" by double clicking on the ERP – Production icon		
---	---	--	--



#	Main activities	Tips/Best practices	Key points
2	Click 		



#	Main activities	Tips/Best practices	Key points
3	Insert T-code "MM01" and press enter on keyboard		

Create Material (Initial Screen)

Select View(s) Org. Levels Data

Material

Industry sector

Material Type

Change Number

Copy from...

Material

#	Main activities	Tips/Best practices	Key points
4	Click <input type="text"/> in "Industry sector"		
5	Select "Chemical industry" in 'Industry sector' field		

Create Material (Initial Screen)

Select View(s) Org. Levels Data

Material

Industry sector

Material Type

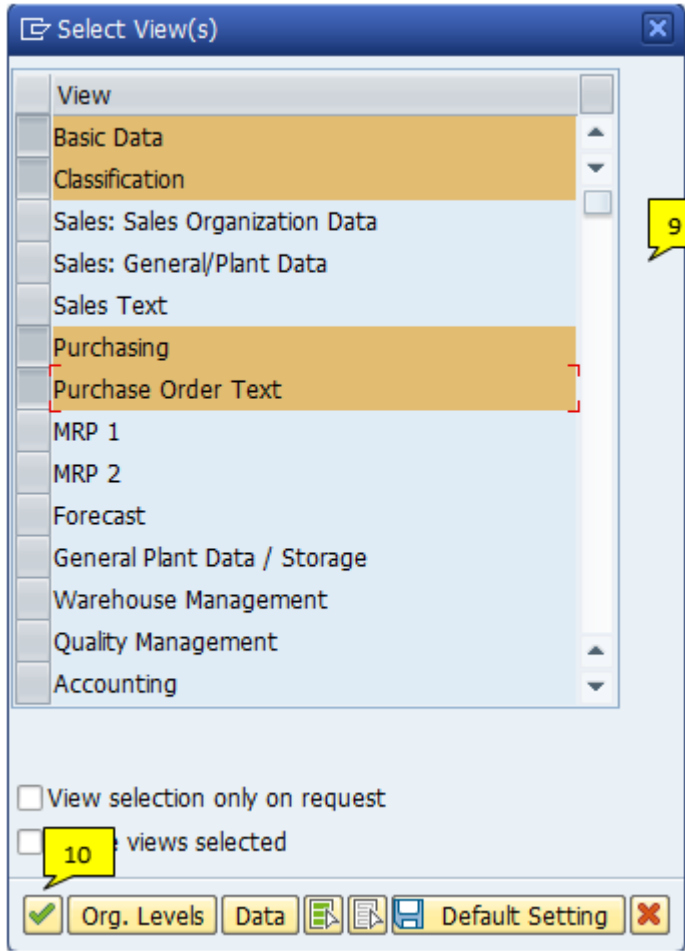
Change Number

Copy from...

Material

#	Main activities	Tips/Best practices	Key points
6	Click <input type="text"/> in "Material Type"		
7	Select "KR: Technical parts"		

8	Click Select View(s)		
---	---	--	--



#	Main activities	Tips/Best practices	Key points
9	Select view from following below -Basic Data -Classification -Purchasing -Purchase Order Text		
10	Click	If you do not want to select every time you create material, you can click to set as default. Then click	

Material Edit Goto Defaults System Help

✓ [Dropdown] << [Icons]

Create Material (Initial Screen)

Select View(s) Org. Levels Data

Material [Text Field]
 Industry sector Chemical industry [Dropdown]
 Material Type KR : Technical parts [Dropdown]


Organizational Levels [Close]

Organizational levels [11]

Plant OSF [11] [Copy]

Org. levels/profiles only on request [12]

[Checkmark] Select View(s) [Save] Default Setting [Close]

#	Main activities	Tips/Best practices	Key points
11	Insert "OSF" in Plant field		
12	Click 		

Material Edit Goto(1) Goto(2) Extras Environment System Help

Material 39000003830

Create Material 39000003830 (Basic Data, KR : Technical parts)

Descriptions Units of Measure Org. Levels Check Screen Data

Material 39000003830

Descriptions

Language	Material description
EN	ABC
<input checked="" type="checkbox"/>	<input checked="" type="checkbox"/>
<input checked="" type="checkbox"/>	<input checked="" type="checkbox"/>
<input checked="" type="checkbox"/>	<input checked="" type="checkbox"/>

Delete line Entry 0 of 0

General Data

Base Unit of Measure	PC	Material Group	ZM3148
Old material number		Ext. Matl Group	
Division	ZZ	Lab/Office	
Product allocation		Valid from	
X-plant matl status		GenItemCatGroup	

Material authorization group

Authorization Group

#	Main activities	Tips/Best practices	Key points
13	Insert material description in the same line as EN language		Provided by requester
14	Insert unite of Measure in 'Base Unit of Measure' field		Provided by requester
15	Insert "ZM3148" in 'Material Group' field	If the system not allow you to go to next page, please insert "ZM3145"	Default value
16	Insert "ZZ" in "Division" field and press "Enter" on keyboard		Default value

Material Edit Goto(1) Goto(2) Extras Environment System Help

Create Material 3900003830 (Classification, KR : Technical parts)

Descriptions Units of Measure Org. Levels Check Screen Data

Class Type (1) 19 Entries found

Restrictions

Class type description	Ty.
Batch	022
Material (configurable objects)	200
Variants	300
Amra Benelux	ZBA
JV Benelux	ZBJ
Material Benelux	ZBK
Material Benelux	ZBL
Label Benelux	ZBM
Material Ixelles	ZBX
Eurocam Switzerland	ZCK
Eurocam Germany	ZDK
Eurocam Germany	ZEJ
Eurocam Spain	ZEK
Eurocam France	ZFK
Eurocam Italy	ZIK
Eurocam Portugal	ZPK
Eurocam UK	ZUK
Material distribution (ALE)	ZZM

19 Entries found

#	Main activities	Tips/Best practices	Key points
17	Double click on "Material distribution (ALE)"	The last row	

Assignment Edit Goto Value assignment Extras Environment System Help

Material 39000003830 ABC

Class Type ZZM Material distribution (ALE)

Cre 19 Material 39000003830 (Classification, KR : Classification

Object


Material 39000003830 ABC

Class Type ZZM Material distribution (ALE)

Assignments

Class	Description	St...	S.. I...	Itm
CHIMIE	Chemistry Supply Chain	<input type="checkbox"/>	1	10

Entry 1 / 1

#	Main activities	Tips/Best practices	Key points
18	Insert "CHIMIE" in 'Class' field and press "Enter" on keyboard	Other fields will pop up automatically after you press "Enter"	Default value
19	Click 		

Material Edit Goto(1) Goto(2) Extras Environment System Help

Create Material 3900003832 (Purchasing, KR : Technical parts)

Descriptions Units of Measure Org. Levels Check Screen Data

Material 3900003832 ABC
Plant OSF SLV-KR /ONSAN ULSAN

General Data

Base Unit of Measure PC **20** e(s) Order Unit Var. OUn
Purchasing Group KO1 Material Group ZM3148
Plant-sp.matl status Valid from
Tax ind. f. material Qual.f.FreeGoodsDis.
Material freight grp Autom. PO
 Batch management

Purchasing values

Purchasing value key **Z3** Shipping Instr.
1st Reminder/Exped. 4 days Underdel. Tolerance 0,0 percent
2nd Reminder/Exped. 8 days Overdelv. Tolerance 0,0 percent
3rd Reminder/Exped. 12 days Min. Del. Qty in % 0,0 percent
StdValueDelvDateVar 0 days Unltd Overdelivery Acknowledgment Reqd

Other data

GR Processing Time 5 **22** days Post to insp. stock
 Critical Part Source list
Quota arr. usage JIT delivery sched.

Foreign trade data

Comm./imp. code no.
Export/import group
CAS number (pharm.)
PRODCOM no.
Control code

Origin

Country of origin Region of origin

Preference

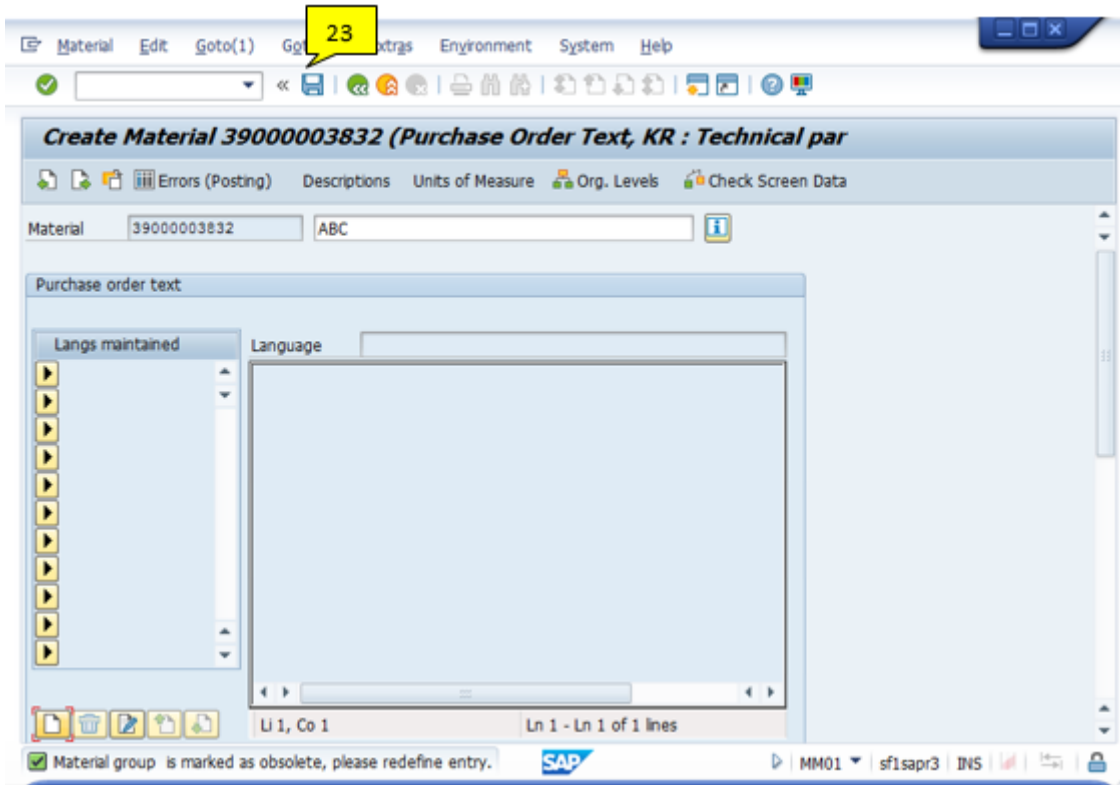
Preference status Not maintained
Vendor decl. status Not maintained

Legal control

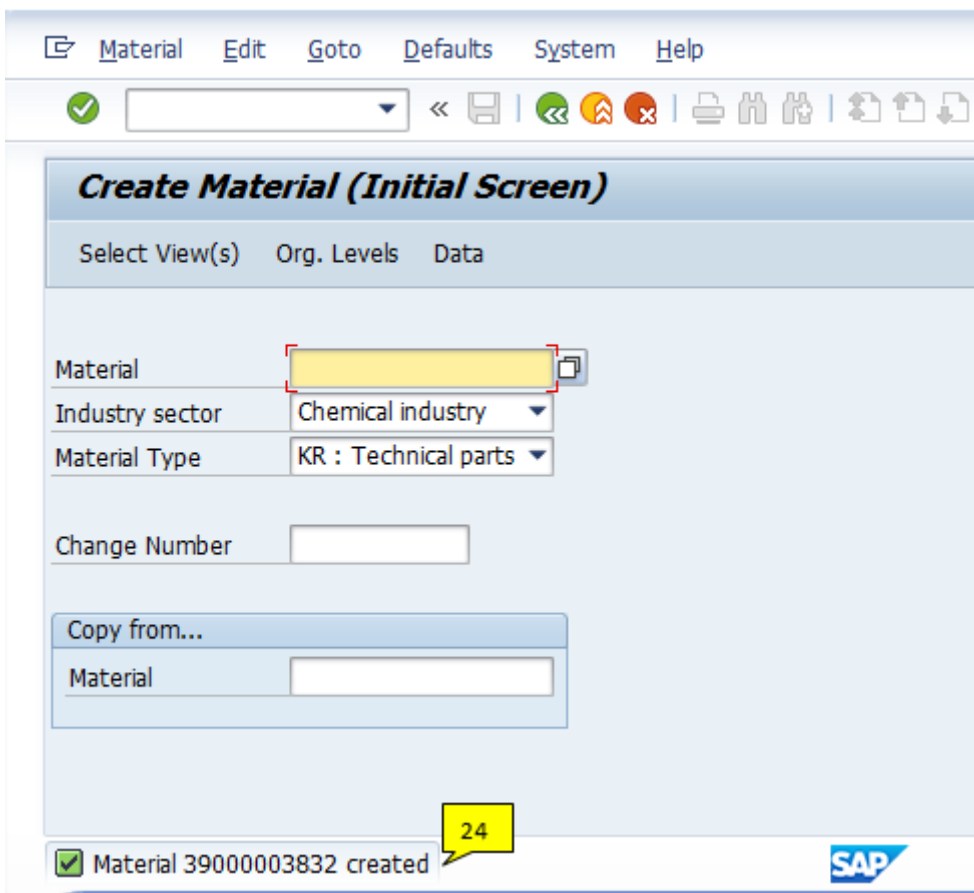
ExemptionCertificate Exemption cert. no.

Check the data for the purchasing value key

#	Main activities	Tips/Best practices	Key points
20	Insert "KO1" in 'Purchasing group' field		Default value
21	Insert "Z3" in 'Purchasing value key' field		Default value
22	Insert "5" in 'GR Processing Time' field and press "Enter" on keyboard	If there is message pop up Check the data for the purchasing value key Press "Enter" again	Default value

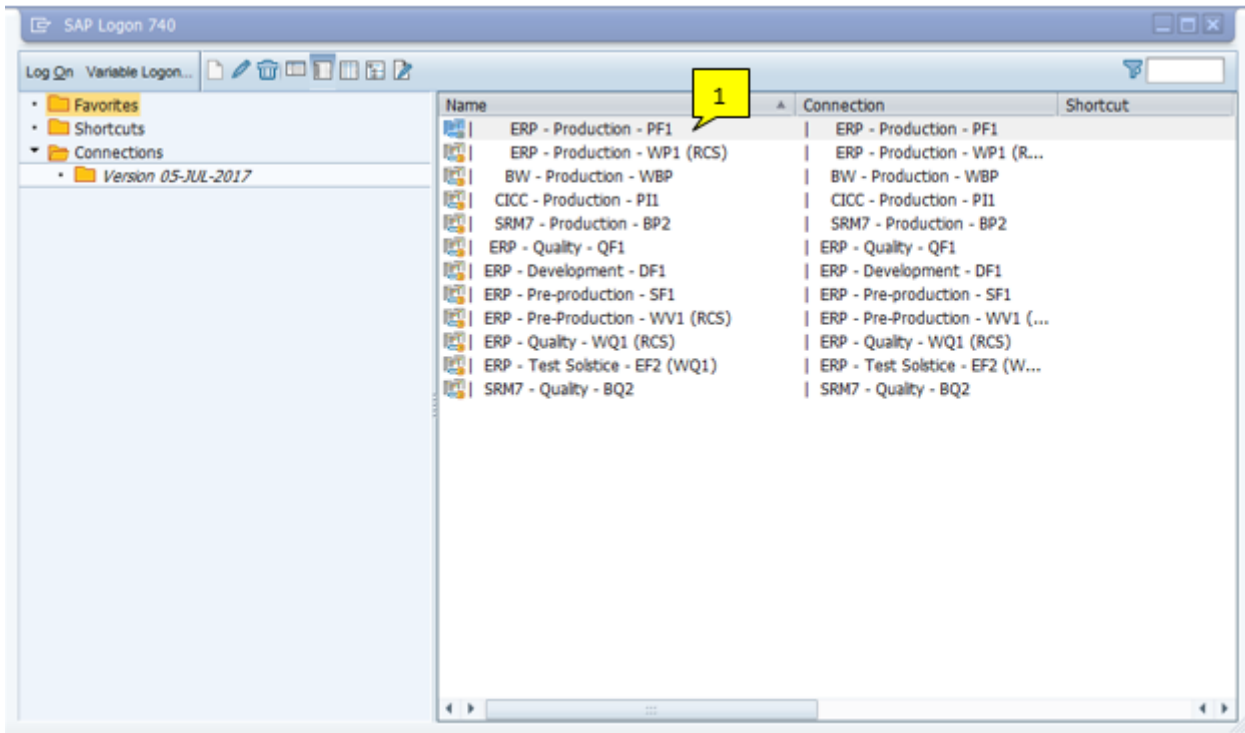


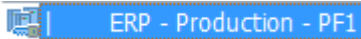
#	Main activities	Tips/Best practices	Key points
23	Click to save	If you see error message, you will need to change material type to "ZM3145"	

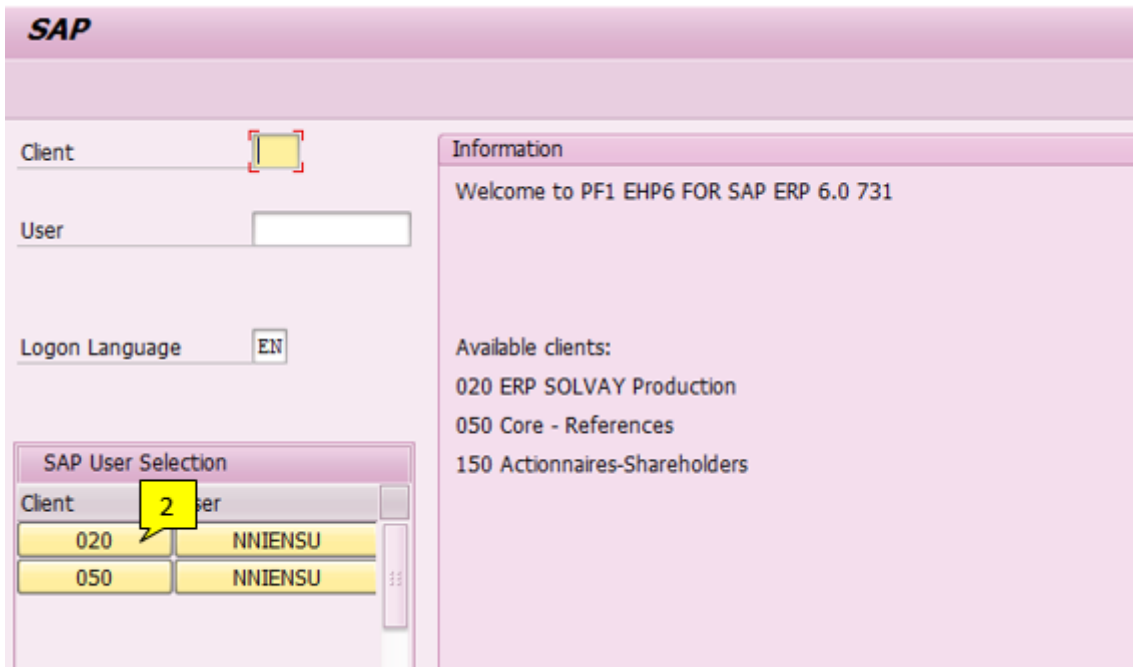


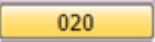
#	Main activities	Tips/Best practices	Key points
24	The system will show that material code has been created		After you finish creating material in PF2_050, you need to create MRP and accounting view in PF2_020

4. How to create material in MRP and Accounting views




#	Main activities	Tips/Best practices	Key points
1	Select "ERP – Production – PF2" by double clicking on the ERP – Production icon 		



#	Main activities	Tips/Best practices	Key points
2	Click 		

#	Main activities	Tips/Best practices	Key points
3	Insert T-code "MM01" and press enter on keyboard		

#	Main activities	Tips/Best practices	Key points
5	Insert material code you created in PF2_050		
5	Click  in "Industry sector"		
6	Select "Chemical industry" in 'Industry sector' field		

Material Edit Goto Defaults System Help

Material (Initial Screen)

Select View(s) Org. Levels Data

Material

Industry sector Chemical industry 7

Material Type

Change Material

Copy from Material

Industrielle gasses

Intra material

JE Subset maintenance

KANBAN container

KR : Technical parts 8

LH Subset maintenance

LIS Subset maintenance

Maintenance assemblies

Maintenance assembly


Maintenance materials

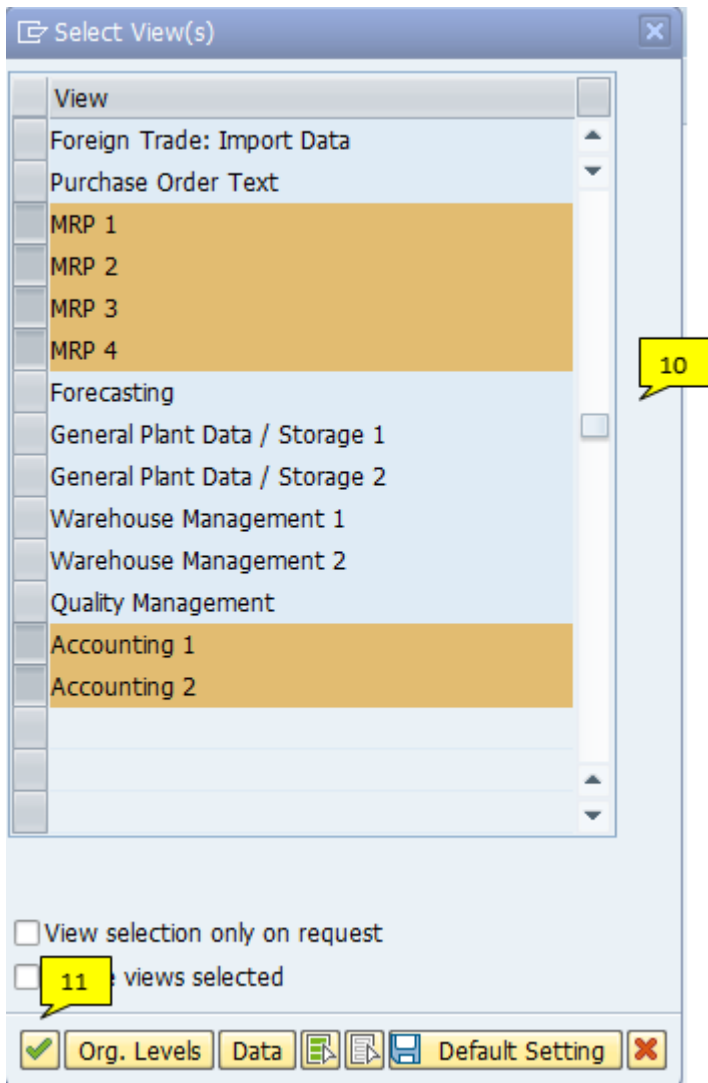
Maintenance materials

Maintenance materials

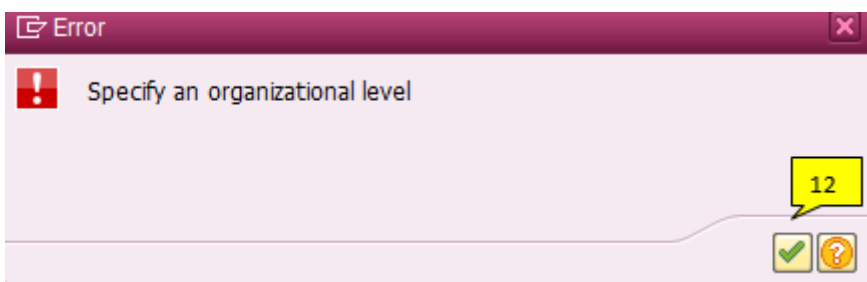
Maintenance module

Manufacturer parts

#	Main activities	Tips/Best practices	Key points
7	Click  in "Material Type"		
8	Select "KR: Technical parts"		
9	Click Select View(s)		

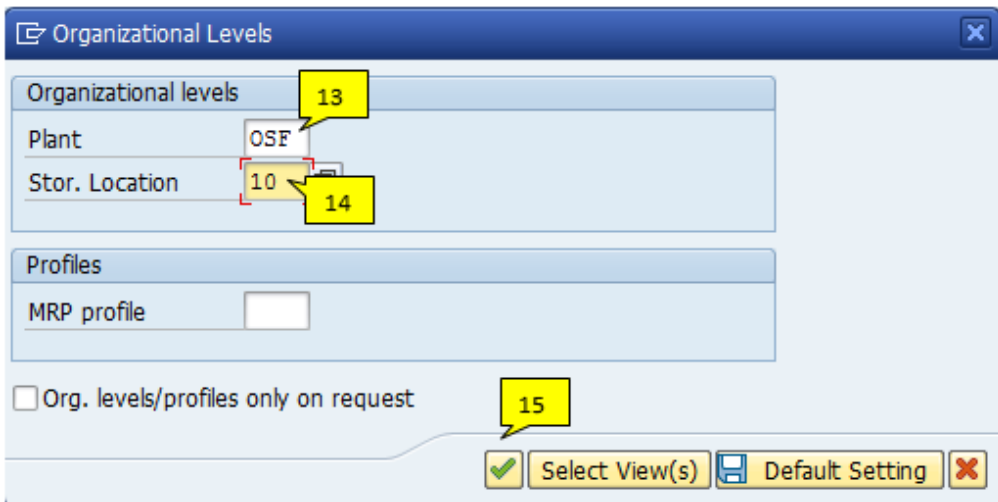



#	Main activities	Tips/Best practices	Key points
10	Select view from following below -MRP 1 -MRP 2 -MRP 3 -MRP 4 -Accounting 1 -Accounting 2		
11	Click	If you do not want to select every time you create material, you can click to set as default. Then click	



#	Main activities	Tips/Best practices	Key points
---	-----------------	---------------------	------------

12	Click 		
----	--	--	--



#	Main activities	Tips/Best practices	Key points
13	Insert "OSF" in 'Plant' field		Default value
14	Insert "10" in 'Stor.Location' field		Default value
15	Click 		

Material Edit Goto Environment System Help

Material 39000003852 CORD OF TEFLONPTFE (φ6MM*100M) Plant OSF SLV-KR / ONSAN ULSAN

Create Material 39000003852 (KR : Technical parts)

Additional Data Org. Levels Check Screen Data

Purchase order text MRP 1 MRP 2 MRP 3 MRP 4 Fo...

General Data

Base Unit of Measure PC piece(s) MRP group MRP1
Purchasing Group KO1 ABC Indicator
Plant-sp.matl status Valid from

MRP procedure

MRP Type PD
Reorder Point Planning time fence
Planning cycle MRP Controller

Lot size data

Lot size EX
Minimum Lot Size Maximum Lot Size
Fixed lot size Maximum stock level
Ordering costs Storage costs ind.
Assembly scrap (%) Takt time
Rounding Profile Rounding value
Unit of Measure Grp

#	Main activities	Tips/Best practices	Key points
16	Insert "MRP1" in 'MRP group' field		Default value
17	Insert "PD" in 'MRP Type' field		Default value
18	Insert "EX" in 'Lot size' field		Default value
19	Click black field in 'MRP Controller' field and click 		

MRP Controller (Materials Planner) (1) 33 Entries found

Restrictions

Plant: OSF

MRPC	Name	Telephone
FPA	Packaging	
FRA	Raw Material	
FZZ	Fluor Distribution	
GES	MRP Controller	
KH1	Mr. Sungjin Woo	+82522310018
KH2	Mr. Donghee Lee	+82522310017
KM1	Ms. Hye-Jin Kim	+82522310058
KP1	Mr. Jongjun Lee	+82522310055
KP2	Mr. Young-Keun Kim	+82522310716
KP3	Mr. KiSuck Jung	+82522310715
KQ1	Mr. Moohyun Seo	+82522310042
KQ2	Ms. Hyejung Hwang	+82522310043
KQ3	Mr. Sung-il JANG	+82522310717
KR1	Mr Woo-Jin Cho	+82522310073
KR2	Mr Jangwook Lee	+82522310072
KR3	Mr. Dong-Wook Kim	+82522310024

33 Entries found

#	Main activities	Tips/Best practices	Key points
20	Double click on requester name		

Material Edit Goto Environment System Help

Material 39000003852 CORD OF TEFLONPTFE (Φ6MM*100M) Plant OSF SLV-KR / ONSAN ULSAN

Create Material 39000003852 (KR : Technical parts)

Additional Data Org. Levels Check Screen Data

MRP 1 MRP 2 MRP 3 MRP 4 Forecasting Plant data ...

Procurement

Procurement type F Batch entry Prod. stor. location 10

Special procurement Quota arr. usage Default supply area

Backflush Storage loc. for EP

JIT delivery sched. Stock det. grp

Bulk Material

Scheduling

GR Processing Time 5 Planned Deliv. Time 45 days

SchedMargin key 000

#	Main activities	Tips/Best practices	Key points
21	Click "MRP 2" tab		
22	Insert "10" in 'Prod. Stor. Location' field		Default value
23	Insert "45" in Planned Deliv. Time' field		Default value
24	Insert "000" in 'SchedMargin key' field		Default value

Material Edit Goto Environment System Help

Material 39000003852 CORD OF TEFLONPTFE (φ6MM*100M) Plant OSF SLV-KR / ONSAN ULSAN

Forecast Requirements
 Period Indicator Fiscal Year Variant Splitting indicator


Planning
 Strategy group Consumption mode Fwd consumption per. Bwd consumption per. Mixed MRP Planning material Planning plant Png conv. factor Planning matl BUnit

Availability check
 Availability check Tot. repl. lead time days
 Cross-project

Plant-specific configuration
 ConfigurableMaterial
 Variant
 Planning variant

MRP 2 MRP 3 MRP 4 Forecasting Plant data / stor. 1 PL...

Basic data 1
 Basic data 2
 Classification
 Sales: sales org. 1
 Sales: sales org. 2
 Sales: General/Plant
 Foreign trade export
 Sales text
 Purchasing
 Foreign trade import
 Purchase order text
 MRP 1
 MRP 2
 ● MRP 3
 MRP 4
 Forecasting
 Plant data / stor. 1
 Plant data / stor. 2
 Warehouse Mgmt 1
 Warehouse Mgmt 2
 Quality management
 Accounting 1
 Accounting 2

#	Main activities	Tips/Best practices	Key points
25	Click "MRP 3" tab		
26	Insert "02" in 'Availability check' field		Default value
27	Click 		
28	Select "Accounting 1"		

Material Edit Goto Environ **31** System Help

Create Material 3900003852 (KR : Technical parts)

Additional Data Org. Levels Check Screen Data

Quality management Accounting 1 Accounting 2

Material 3900003852 CORD OF TEFLONPTFE (φ6MM*100M)

Plant OSF SLV-KR / ONSAN ULSAN

Period 010.2018 Period 009.2018 Period 012.2017

General Valuation Data

Total Stock 0 Base Unit PC piece(s)

Division 22 **29** Valuation Cat.

Valuation Class 2055 Valuated Un

VC: Sale Ord. Stk ML act. **Mat. Price Analysis**

Project Stock VC Price Determ. 2 Transaction-Based

Prices and values

Currency KRW

Company code currency

Standard Price **30**

Per. unit price 950000

Price Unit 1

Prc. Ctrl

Inventory Value 0

Value/per.unit pr 0

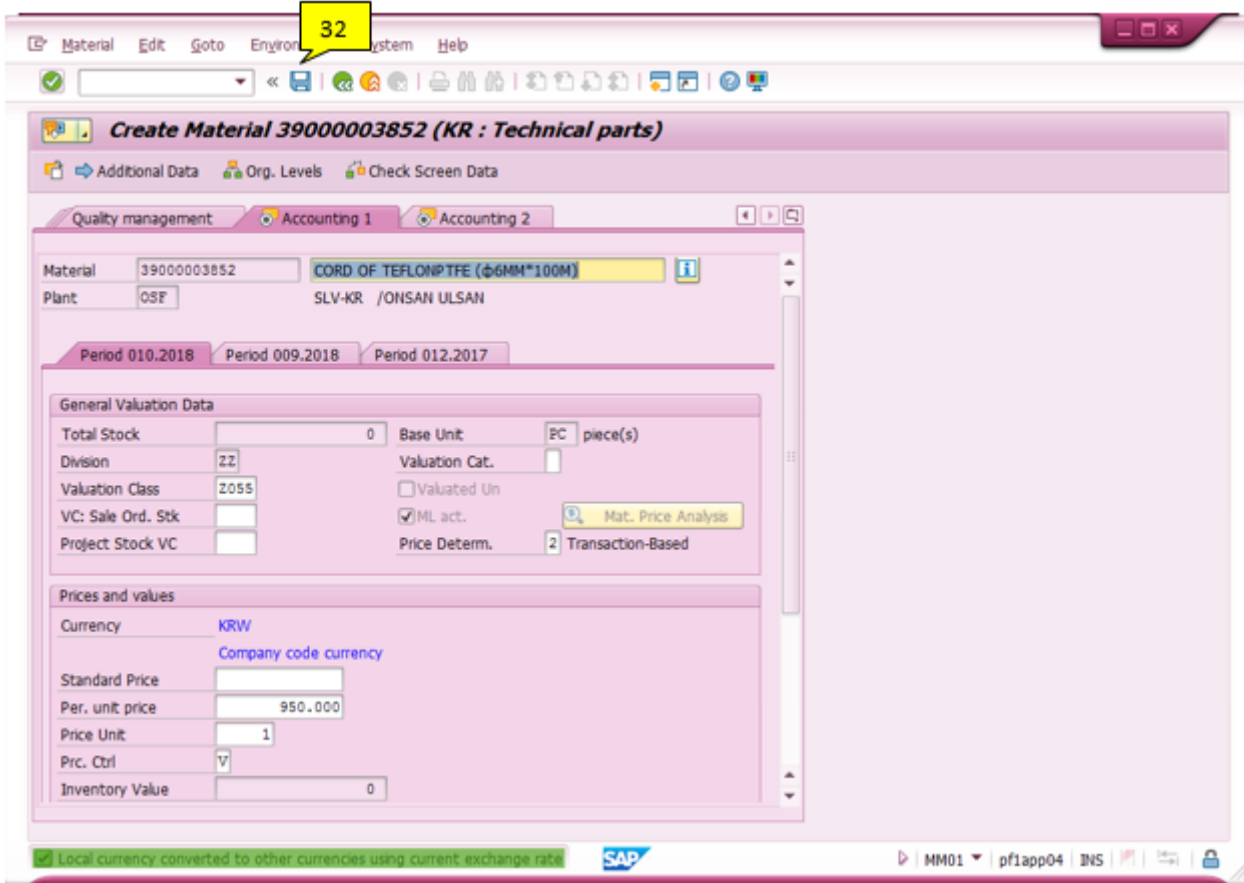
Future price

Future price from

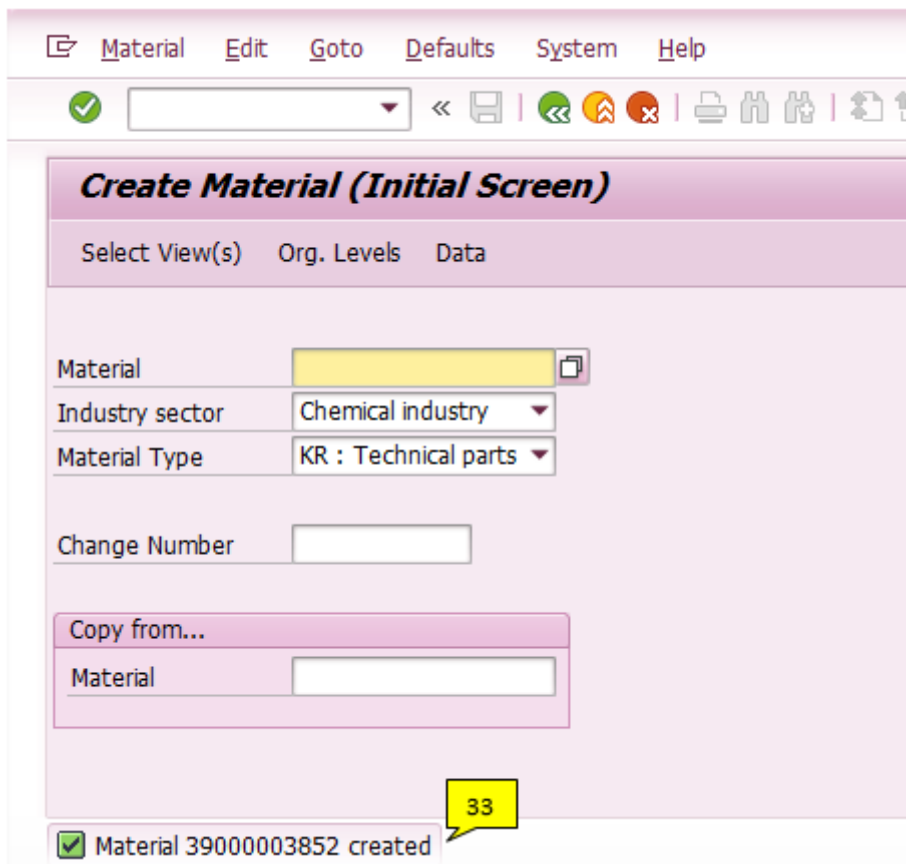
Previous price 0

Last price change

#	Main activities	Tips/Best practices	Key points
29	Insert "2055" in 'Valuation Class' field		Default value
30	Insert price in 'Per. Unit price' field		Provided by requester
31	Click		



#	Main activities	Tips/Best practices	Key points
32	Click  again when see this message		



#	Main activities	Tips/Best practices	Key points
33	The system will show that material has been created		Need to inform requester that material will be available in their side within 2-3 days

