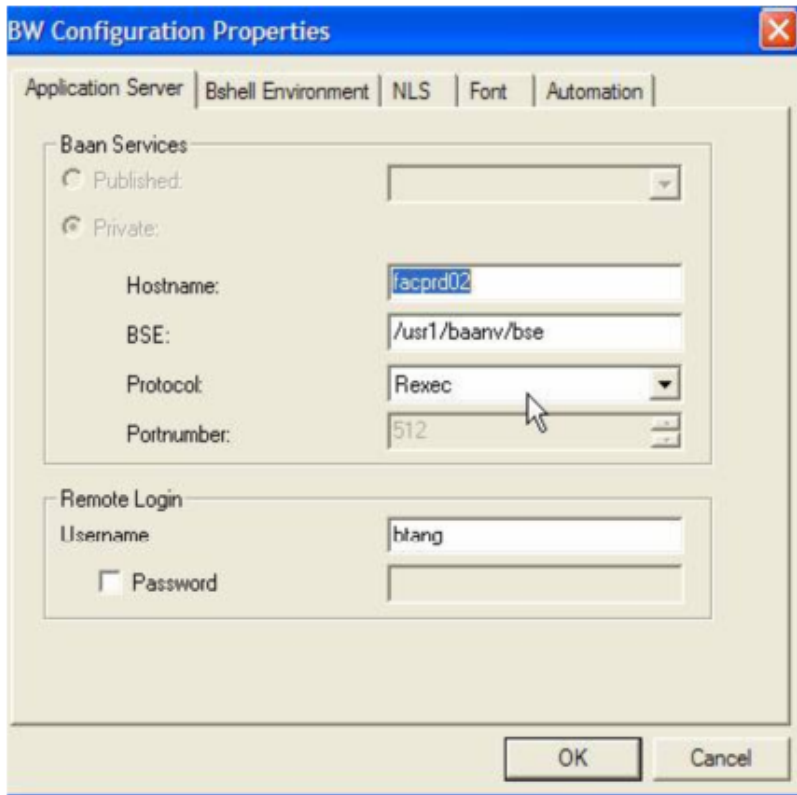


# BAAN - Cannot Setup a Connection with Host

The user's protocol and/or port are incorrect in the Baan client configuration.

Must have user enter into the Baan Client Configuration screen.



The hostname can read either fasprd02, facprd02 or fasprd03 (or with the fully qualified name fasprd02.fa.cytec.com).

Set the Protocol field to Rexec.  
The Port Number should be "512".  
Do not check "Password" in the Remote Login field.  
Click OK