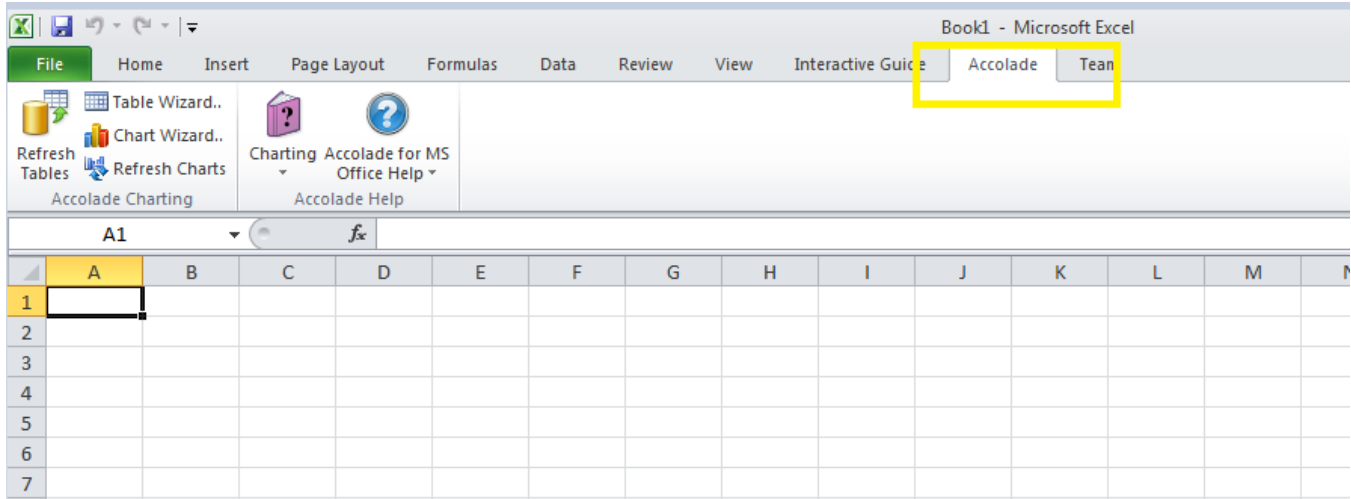


How to verify if Accolade addins v11 have been properly installed?

Steps to find Whether the Microsoft Addin version11.0 installed On User 's Desktop /Laptop

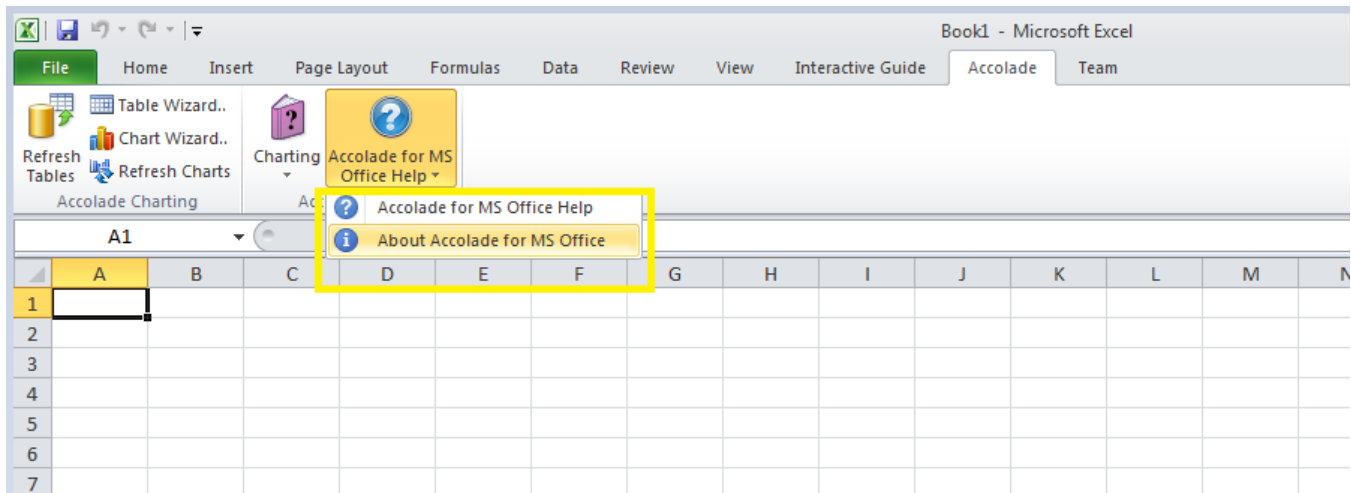
Step 1:

Open the MS Excel and search for Accolade menu in the tool bar.



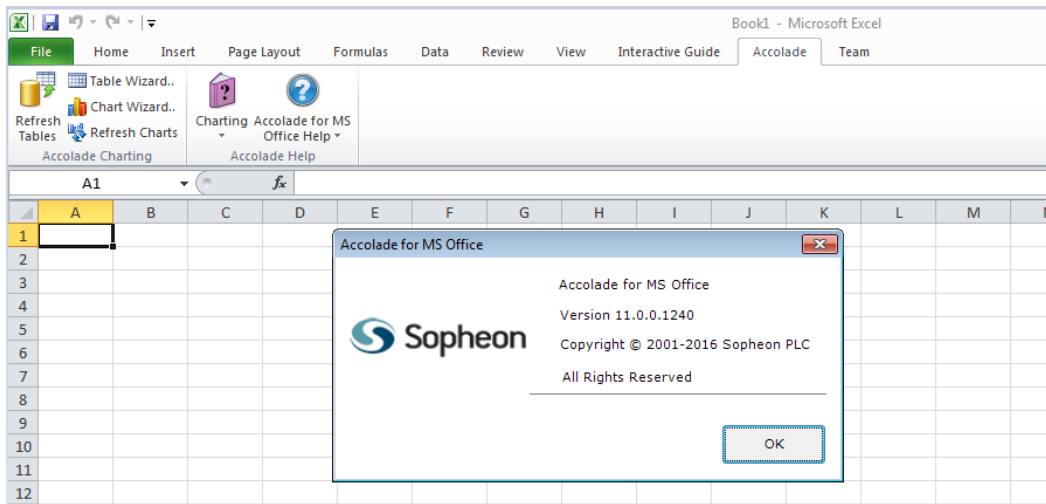
Step 2:

Check for the option Accolade MS office help in the option.



Step 3:

Find the Version of Accolade Installed.



Note:

If the user is having lower version (apart from the version present in the screenshot), then the user needs to contact local infra team to Update it to version 11.0.

Other related content

- [How to Accolade define the Initial target for the Kick Off](#)
- [How to add additional metrics in the Budget&Costs Report](#)
- [How to create my own project report](#)
- [How to Delete Temporary Internet Files, Cookies, and Browsing History of the Internet Browser](#)
- [How to enable macro using automatic reports in Excel](#)
- [How to verify if Accolade addins v11 have been properly installed?](#)
- [How to verify if Accolade of addins v12... have been properly installed?](#)
- [How to verify if Accolade of addins v12... have been properly installed?](#)
- [Save your documents to Accolade](#)
- [Update planned cost in BIARRITZ - Video](#)
- [Update your project status in BIARRITZ - Video](#)
- [Use the Table Wizards](#)