

# KEFC - CO-PA Import File

**STEP 1**

Open transaction KEFC

**Execute CO-PA External Data Transfer**

Sender structure

Input file  
Physical file name  
Logical file name

Output file  
Physical file name  
Logical file name

Planning functions  
 Weekly planning  
Revaluation   
 Valuation

File system  
 Application Server  Presentation server

Editing  
 Test run  Sender set-display field assignments  
 Display File

File ty.  
 Text file  Binaryfile  
 TXT format  CSV format (Field separator=;)   
 MC format with number of constant fields and fld separator (,/)   
 Text file w. fld separator

Numbr. format  
 No formatting  Deciml point  Decml comma

Date format for TXT/CSV/MC format  
 YYYYMMDD  DD.MM.YYYY

Settings for repeat fields  Other settings   
Expert mode

**STEP 2**

Depending of the company code choose variant in line with the controlling area:

- Z001
- Z006
- Z010
- Z013
- Z025
- Z026
- Z028
- \*SPS\* ( for PF1)

**Execute CO-PA External Data Transfer**

Sender structure

Input file  
Physical file name  
Logical file name

Output file  
Physical file name  
Logical file name

Planning functions  
 Weekly planning  
Revaluation   
 Valuation

Variant catalog for program RKEVEXT3

Variant name	Short Description
KOE01	
LB01	
Z001	Z001
Z006	Z006
Z010	Z010
Z013	Z013
Z025	Z025
Z026	Z026
Z028	Z028
ZZQ	ZZQ

PF1

**Execute CO-PA External Data Transfer**

Sender structure

Input file  
Physical file name  
Logical file name

Output file  
Physical File Path  
Logical file path

Find Variant

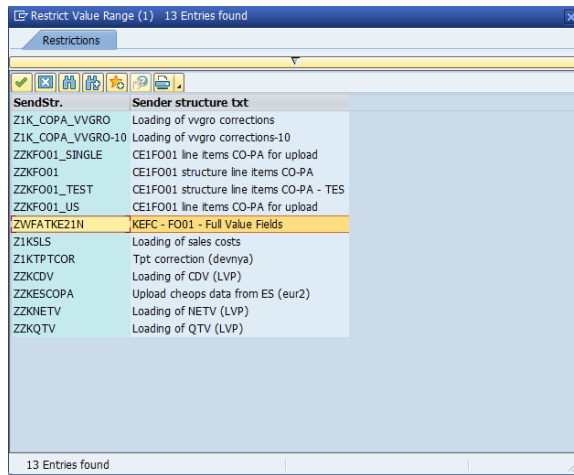
Variant: \*SPS\*

Environment:

Created By:

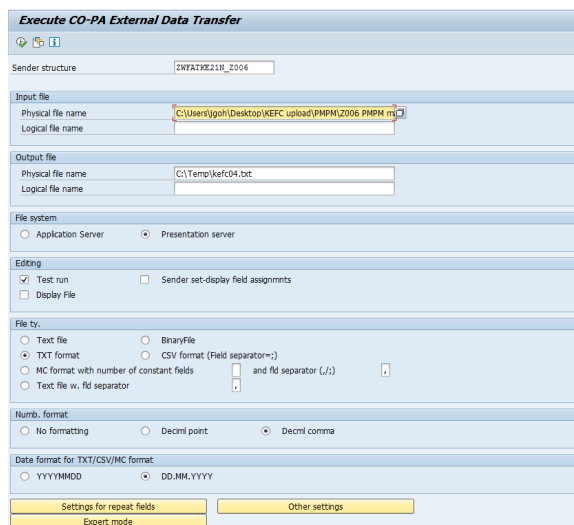
Changed By:

Original Language:



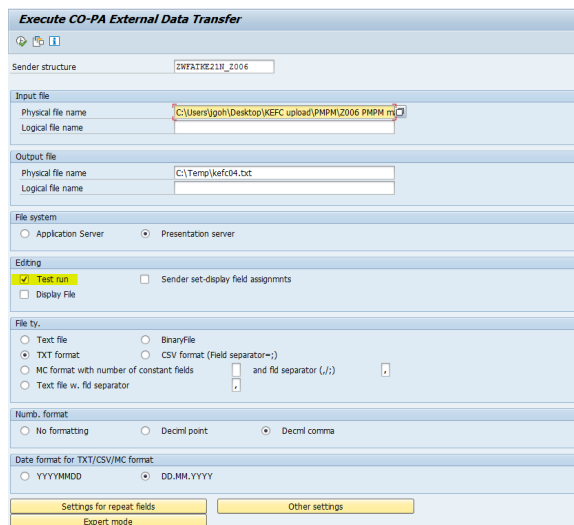
**STEP 3**

Choose the path where the txt file is located.



**STEP 4**

Run in test mode



**STEP 5**

If the transaction didn't retrieve any error upload go back and run again without test run.

### Execute CO-PA External Data Transfer



Execute CO-PA External Data Transfer



Sender program: ZWFATKE21N\_2006  
File name: D:\Users\PT63035882\Desktop\zfr3-8333.txt

No. records: 52 Rec.leng.: 3.101

Number of receiver records: 52

Number of correct receiver records: 52

Number of incorrect receiver records: 0

Test run data transfer: data not updated