
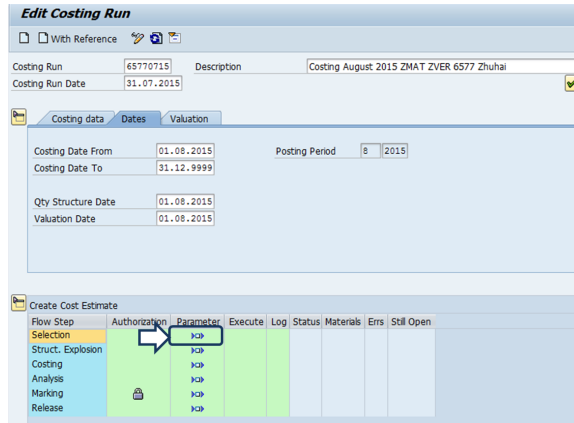


# Costing Run - 1-Selection

## STEP 1


The date of the first day of the cycle appears. To avoid any problems, calculation must remain until 31.12.9999.


The cycle starts with the selection of the materials that are costed. Click on  in the column « Parameter » / line « Selection »

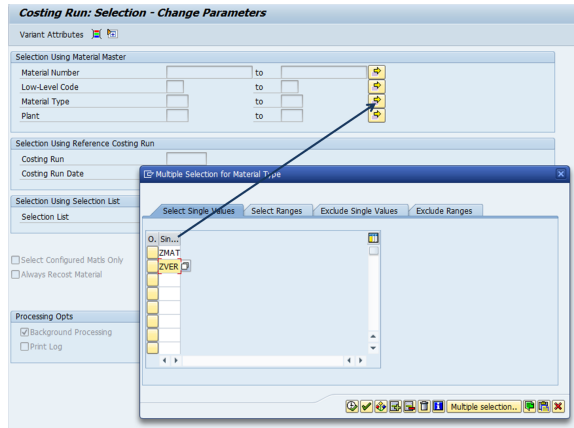


## STEP 2

A new screen appears


1. Click on  beside Material Type
2. Enter the Material type :
  - ZMAT : Finished product & RM & SF
  - ZVER : Packaging

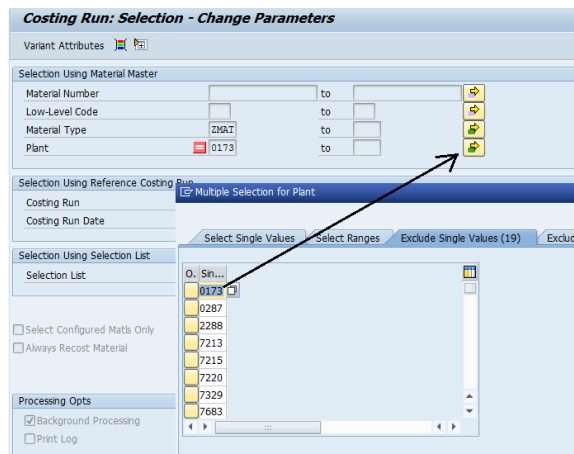
and execute 



## STEP 3


In the same screen update the plants:

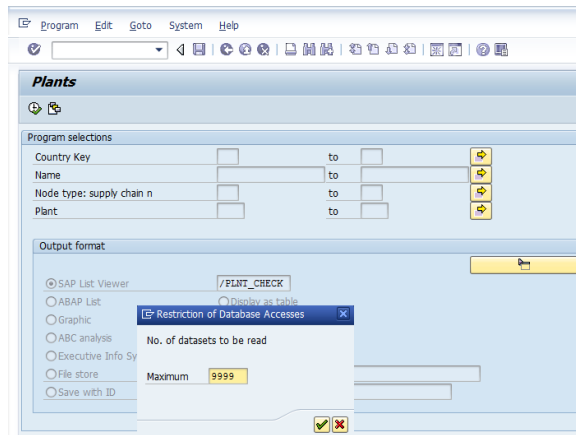
1. Click on  beside Plant
2. In tab Exclude single values
3. Add the plants from SQ00 in tab excludes



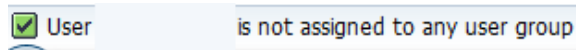
## STEP 4

To remove Trading Plants (Négoce /NDIR) from WP1 Costing Run the following selections must be performed:

1. Go to **SQ00**, user group "**Costing**", choose the Query "**PLAN TS**" and execute 
2. In case you get an error message saying that your User is not assigned to any User Group, go to Environment -> Work areas and choose Standard area. After go to Edit -> Other User Group -> Costing.
3. Select Layout **/PLNT\_CHECK** and confirm for your scope if Plants listed are excluded from **CK40N** parameters.



2



**Conclusion:** The Plants should be included/added to the already existing exclude list in CK40N (do not delete the Plants already in the List).

3


Plnt	Name 1	Rg	Region (State, Provi	Cty	Nty	House number and street
7379	ZFR3 / Négoce BE			BE		
7330	ZFR3 / Négoce DE			DE	DC	
8107	ZFR3 / Négoce ES			ES		
7329	ZFR3 / Négoce FR	93	SEINE-ST-DENIS	FR	DC	
7360	ZFR3 / Négoce GB			GB	DC	
7390	ZFR3 / Négoce Hors UE			Q1	DC	
7353	ZFR3 / Négoce IT	MI	MILANO	IT	DC	VIA MILANO 78/80
7331	ZFR3 / Négoce NL			NL	DC	
7380	ZFR3 / Négoce UE			EU	DC	

**STEP 5**



Check Background Processing  
and save

? Unknown Attachment


The message "Values of variant xxxx" appears


Go back by clicking 


**Costing Run: Selection - Change Parameters**


Variant Attributes  

Selection Using Material Master

Material Number  to  

Low-Level Code  to  

Material Type  to  

Plant  to  

Selection Using Reference Costing Run

Costing Run


Costing Run Date

Selection Using Selection List


Selection List

Select Configured Matis Only  
 Always Recost Material



Processing Opts

Background Processing 

Print Log

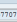
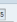
Values of variant 65770715735811 saved 

**STEP 6**

1. Click on  in the column « Execute » / line « Selection »
2. Check Start Immediately
3. Click on 

? Unknown Attachment

**Edit Costing Run**

With Reference  

Costing Run  Description  Costing August 2015 ZMAT ZVER 6577 Zhuhai

Costing Run Date

Costing data Dates Valuation

Costing Variant  PC Costing Variant RCS

Costing Version  Version w/o Customizing

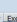
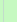
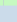



Controlling Area  Rhoda Asia Pacific

Company Code  Zhuhai Soklay S&A Chem Co

Transfer Control

Server Group

Create Cost Estimate

Row	Step	Authorization	Parameter	Execute	Log
Selection					
Struct. Explosion					
Costing					
Analysis					
Marking					
Release					

**Background Processing: Job Parameters**

Job name

Server Group

Date/time AfterJob After event With oper. mode Workday/time

Planned Start

No Start After

Start Immediately

Restriction Date/Time

Change print param.

