

# PF2 - Report Z1k\_SPAREPARTS

## Tasks to be completed when documenting an SAP Transaction, Report or Message code.

1. Title of the page = SAP Transaction code, SAP Report or SAP Message

2. Add the following Labels, respectively:

- SAP Transaction => "sap\_transaction", Transaction code "xxxx"
- SAP Report => "sap\_report"
- SAP Message => "sap\_msg"

3. On the left section, describe the steps. On the right section, insert respective print screens and additional guidelines, if needed (e.g. Main selections of the transaction...)

STEP 1

**Use transaction code:  
Z1K\_SPAREPARTS**

**You will be able to find four sections:**

- Selection Screen
- Layout
- Download to excel

Spare part by Company/ Plants / Profit center / Material

Selection Screen

Company Code [ ] to [ ] [ ]

Valuation Area [ ] to [ ] [ ]

Material Code [ ] to [ ] [ ]

Valuation Class [ ] to [ ] [ ]

Profit Center [ ] to [ ] [ ]

Year [ ] [ ]

Period [ ] [ ]

Storage Location

Display Options

Layout [ ]



PF2 - Report Z1k\_SPAREPARTS: This report will provide you extraction of several fields of the master data of the material as well as stock quantities, values and consumption-



This report is mainly used to provide information for the calculation PF1 inventory reserves:

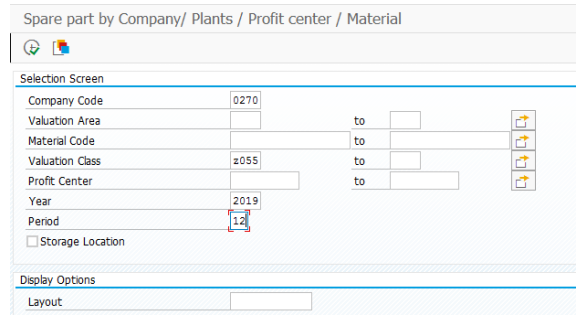
- Raw Materials
- Spare Parts
- Finished goods (limited)

**STEP 2**

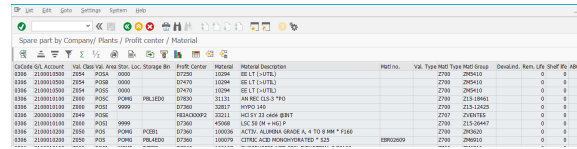
**Selection Screen**

In the Selection screen, the following data needs to be selected:

- Company code
- Valuation class (Of the material)
- Year
- Month
- The other fields, can be selected depending on the level of detail available/needed
- Layout can also be selected if available (Otherwise can be define after execution)



First screen after execution:

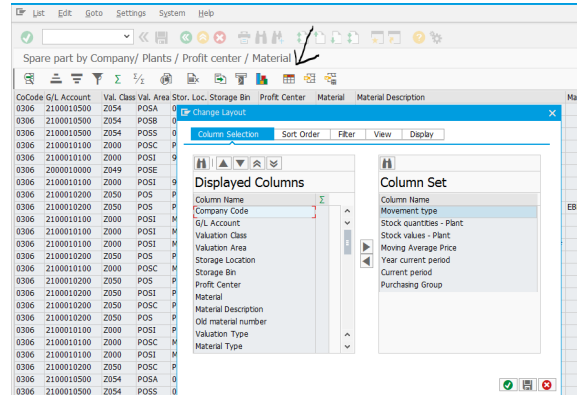


Depending on the information needed, select the different fields to prepare the report

**STEP 3**

**Layout**

Layout selection:



**STEP 4**

**Extraction to excel**

It is possible to extract to excel in two different ways:

1. Excel
2. Local File

Go to list -> Export

and select the option needed

