

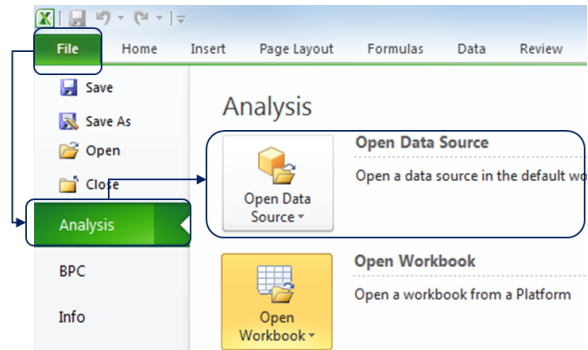
Open data source or workbook

- [Open Data Source](#)
- [Open a workbook \(on the server\)](#)
- [Open a workbook \(saved on your local drive\)](#)

Open Data Source

There are 2 options to open Data Source:

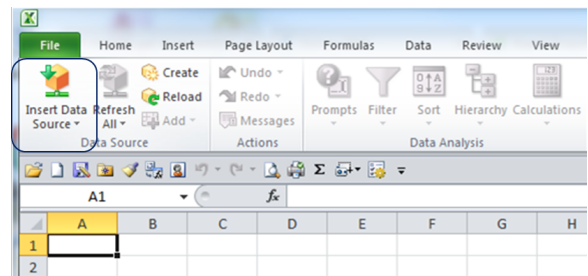
- Go to the File tab, click on Analysis then Open Data Source.



Or click the Analysis tab

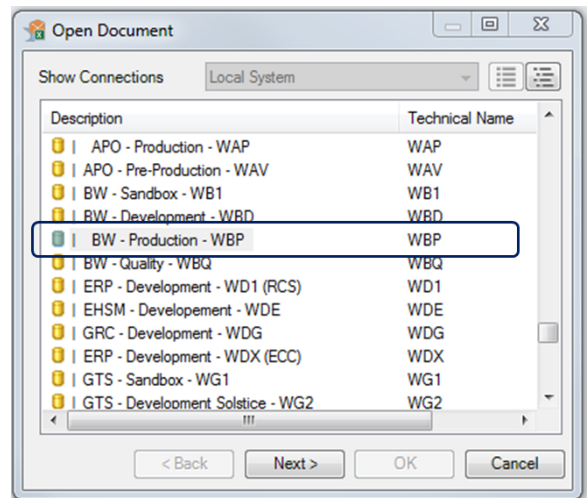
1. First, select an empty cell where you wish to insert your data (Ex : A1)
2. Click on "Insert Data Source"

i When you click on "Insert", it will show the "Select Data Source" option but also **up to 10 queries from your history**



Select the source system: BW - Production - WBP

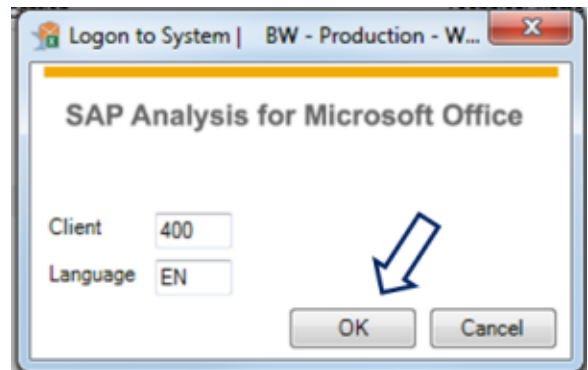
i **Account**
No Account ? Go to [Getting a BW Account](#).



Click « OK »

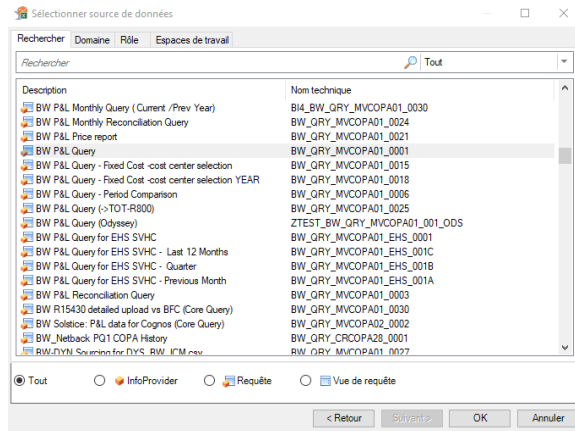
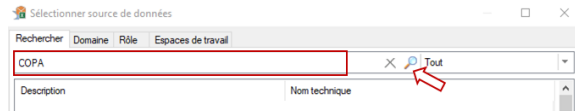
- Client: 400
- Language: EN

i **Language**
Only English is fully supported.



The "Select Data Source" window opens. Here you can:

- either search for the queries by description/technical name (Search Tab)

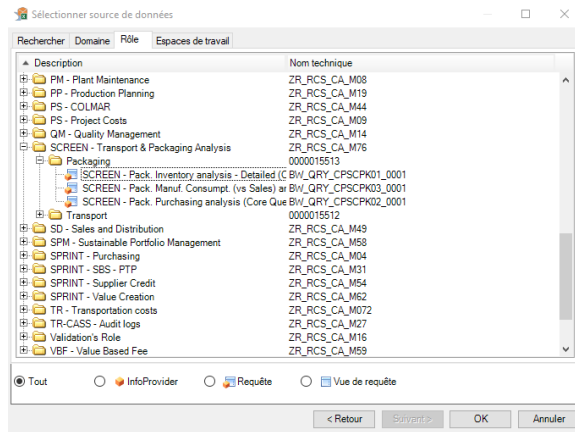


- or via browsing in the roles

Roles

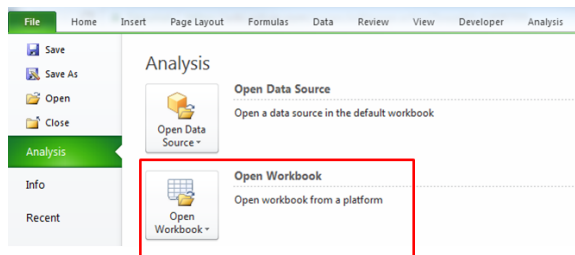
The "Roles" are folders which contain the core queries. The roles you have reflect your access so if you are not seeing a given role it means you do not have access to it and need to request it (Go to [Getting an Account](#)).

Select the query you want to insert and click OK. This will launch the query and a prompt will appear for you to select the data.



Open a workbook (on the server)

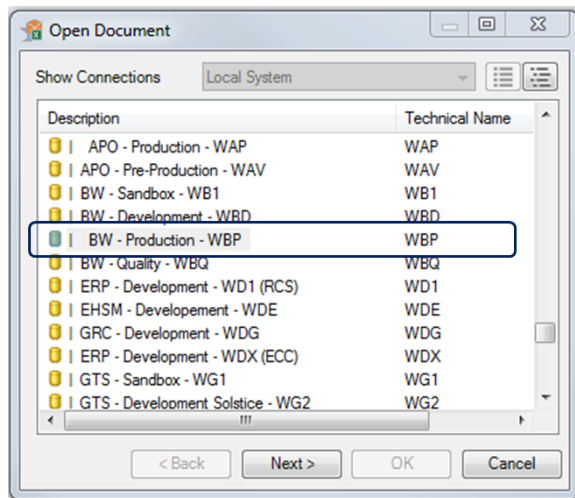
- Go to the File tab, click on Analysis then Open Workbook.



Select the source system: BW - Production - WBP

Account

No Account ? Go to [Getting a BW Account](#).

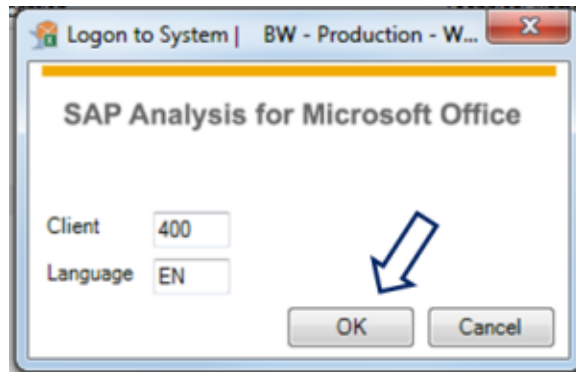


Click « OK »

- Client: 400
- Language: EN

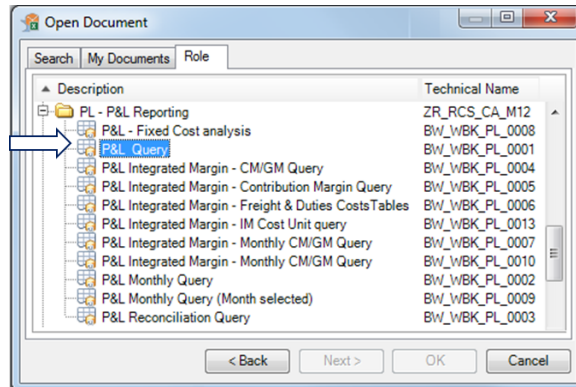
Language

Only English is fully supported.



Go to the tab "Role" and then open a working capital workbook.

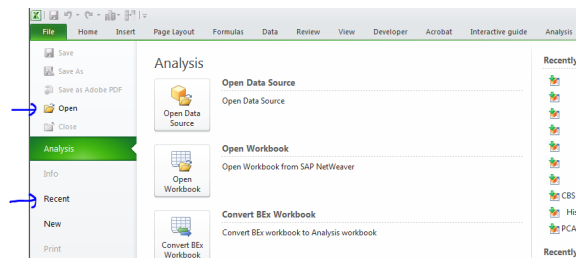
Select and open the folder and double click on the workbook.



Open a workbook (saved on your local drive)

You need to first open "Analysis for Microsoft Excel", then open your BW file (by File --> Open or Recent).

If you first open your BW file, then open "Analysis for Microsoft Excel", there will be two Excel opened and you can't refresh your BW file.



Related Information

- [The Prompt Window](#)