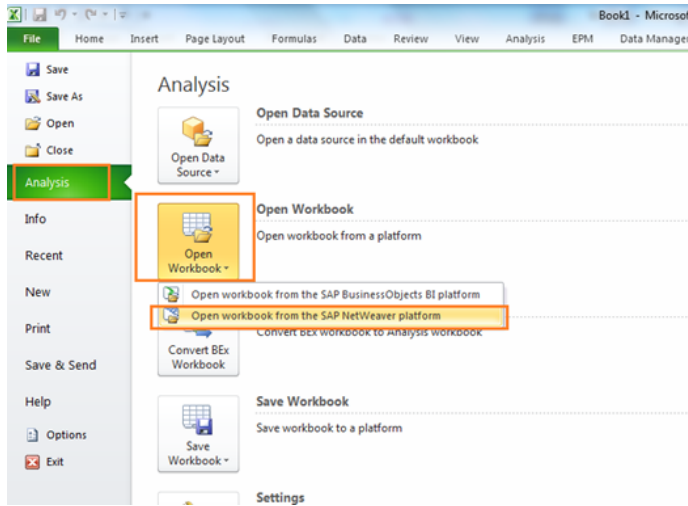


# Unable to see Query in Bex analyzer

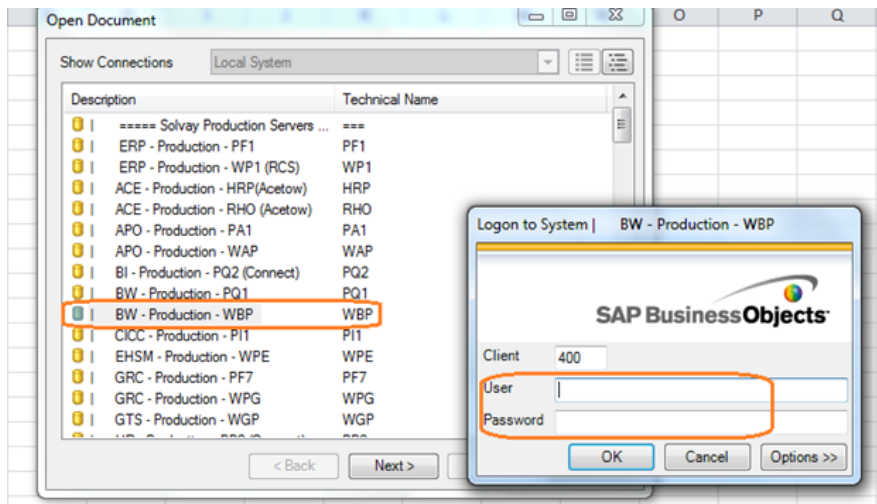
Sometimes User complains they are unable to find the query in Bex Analyzer. But we see user have all the related roles of the application. It's because Some applications like (Project Costs, Plant Maintenance) are accessed from Data Source and Some via "Workbook".

Please find the below navigation to open unseen quires.

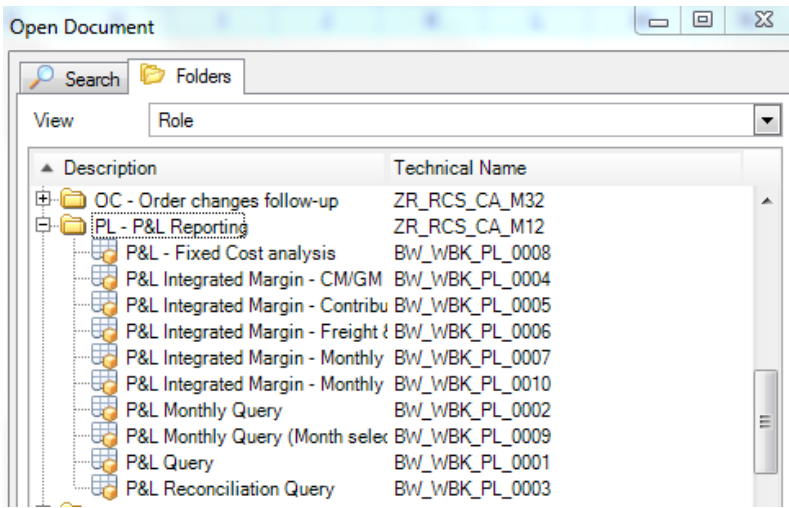
Open Excel à Click on File à Analysis à Open Workbook à Open workbook from the SAP NetWeaver platform



Now select WBP à Give User name and password.



Select Folder, here you can see the PL reporting queries.



Below is the ticket of reference.

<https://sbs-support.solvay.com/helpdesk/tickets/743114>