

# PF1 Route Determination Upload

## Table of contents

1. Objective and Scope
2. Scope
3. Definitions
4. Routes creation in PF1
5. The route determination
6. Route Determination Mass Upload
7. Route Determination Mass Deletion 7

## 1. Objective and Scope

This document presents the general process for managing routes in PF1 system.

## 2. Scope

This process applies to all deliveries to be processed in the EMEA zone (except Gorzow in Poland), and exclusively with regard to sales transport.

## 3. Definitions

**SD** : Shipment Document. This file is a summary of all the elements necessary for carrying out a transport: route, carrier used, point of departure, point of arrival, mode of transport used ...

**SCD** : Shipment Cost Document. It is generated during the implementation (= ex works) of the transport mentioned in the SD where the accrual of the transport cost is created.

**SHIPPING POINT** : This is a code assigned to each site according to the nature of the product transported and the type of transport used (Ex: Collonges = 0151).

**TARIFF ZONE** : Division of a country to avoid having to enter the same tariff as many times as there are departments in the same geographical area (Ex: ZT Rhône-Alpes can include 01, 38, 69, 42)

**EMEA** : Europe, Middle East and Africa

**TRANSPORT PLANNING POINT (TPO)** : This is a code assigned to each administrative entity. It defines which site is responsible for organizing and paying for each transport.

**RDТ** : Route Determination Table. This table allows that a route populate automatically in an order.

**GOOGLE FORM** : It is a way that allows sites to make emergency route requests.

## 4. Routes creation in PF1

The route defines the way used to deliver goods between 2 points, for a combination of criteria.

The route ID follows this rule :

- Country code of the departure zone + Shipping type + Forwarding agent + Loading port + Unloading port + Number of days for the transportation organization + Number of days of transit.

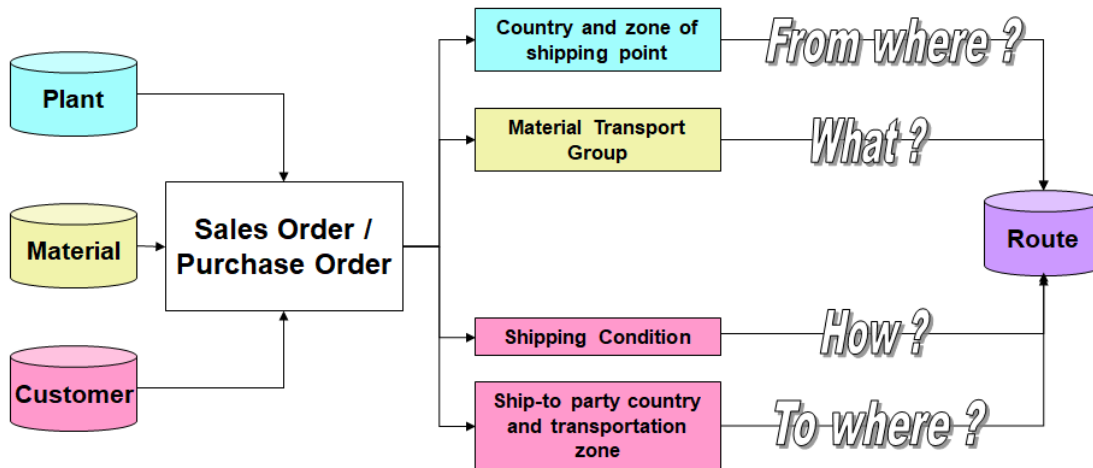
The route allows also to determine the transportation agent, and to schedule the sales order / PO dates, before checking the availability of the goods and the shipping conditions on the date agreed by the customer.

To enable an automatic determination of the route, a certain number of basic data is necessary :

- Departure country and zone : Come from the shipping point
- Arrival country and zone : Come from the Ship-to customer's address (arrival zone can be changed during sales order entry if needed)
- Transportation group : Come from the 'Plant' view of the material
- Shipping conditions : Come from the 'Sales' view of the customer (can be changed during order entry if needed)
- Routes propositions (created and updated by Logistics Data)

## 5. The route determination

The order contains all of the keys required to determine the route.



## 6. Route Determination Mass Upload

Route determination is performed with transaction Z1T\_ROUTE

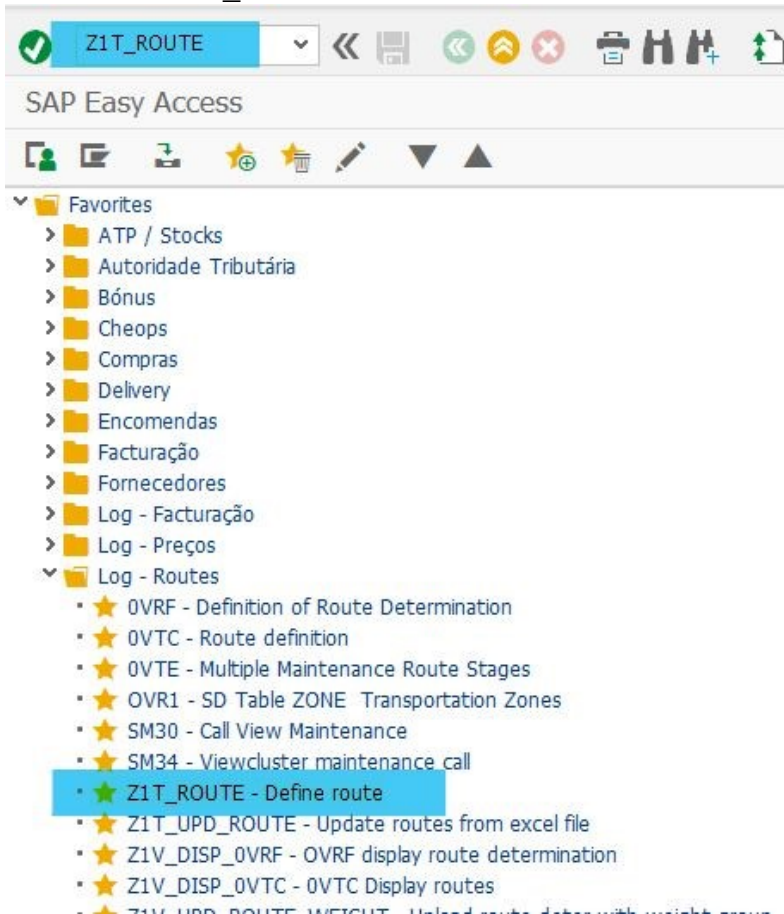
6.1 - Prepare your excel template with the mandatory fields:

	A	B	C	D	E	F	G
1	Ctry	DepartZon	DstC	TranspZon	SC	TGroup	Act.Rte
2	FR	Z-TA	US	Z-53Y	12	NEP	3BR306
3							
4							
5							

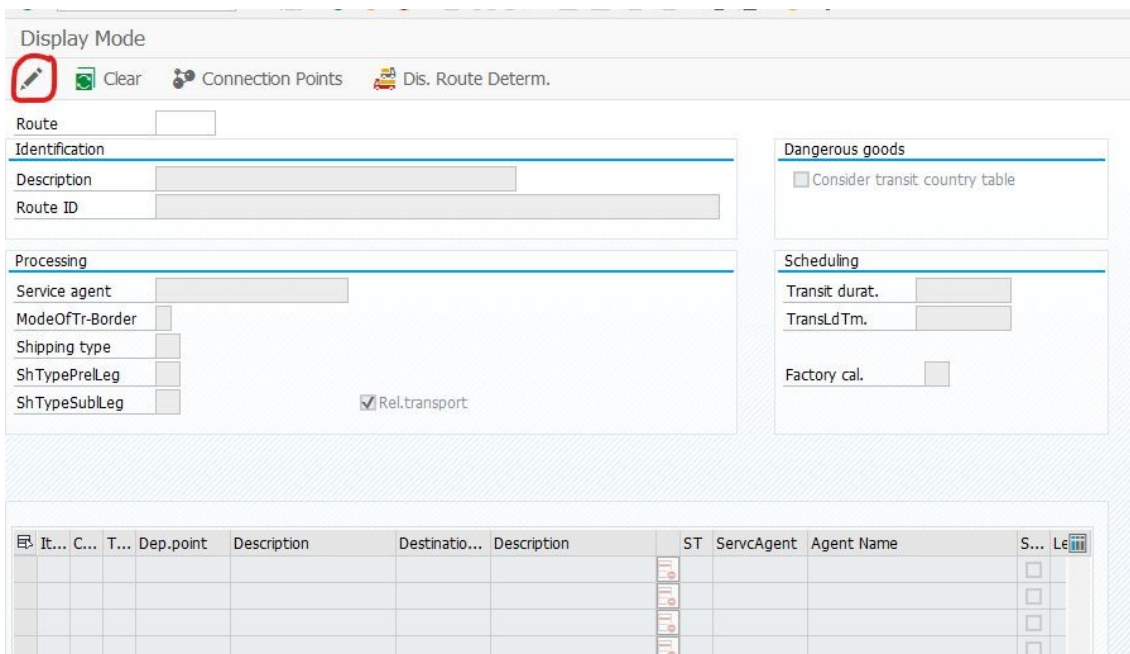
6.2 - Save it as an Unicode file without the first line(the header):

File	Edit	Format	View	Help
FR	Z-TA	US	Z-53Y	12 NEP 3BR306

### 6.3 - Go to **Z1T\_ROUTE** transaction:



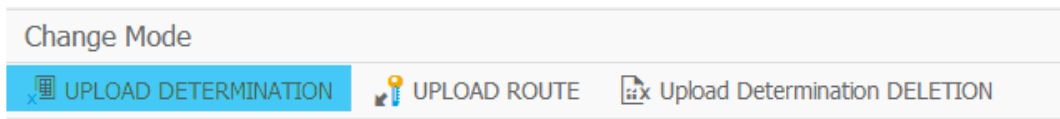
### 6.4 - Select **Change** button (the pencil):



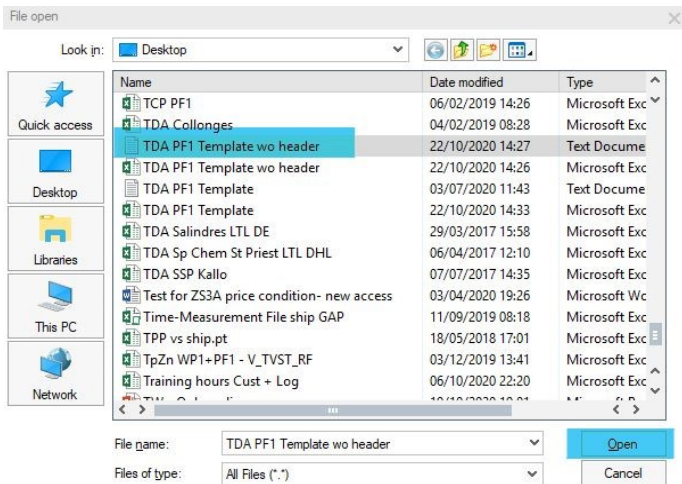
### 6.5 - Then, select **Determination** button :



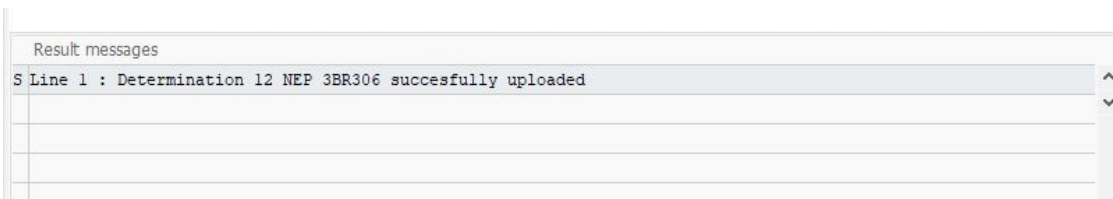
### 6.5.1 Press Upload Determination button:



### 6.5.2 Select your txt file and press Open button:



### 6.5.3 You will obtain a report of your upload:



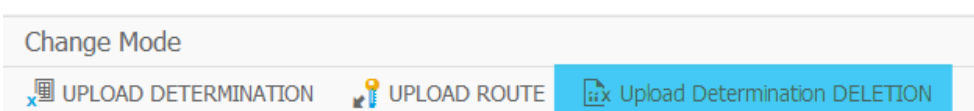
## 7. Route Determination Mass Deletion

Route determination is performed with transaction Z1T\_ROUTE

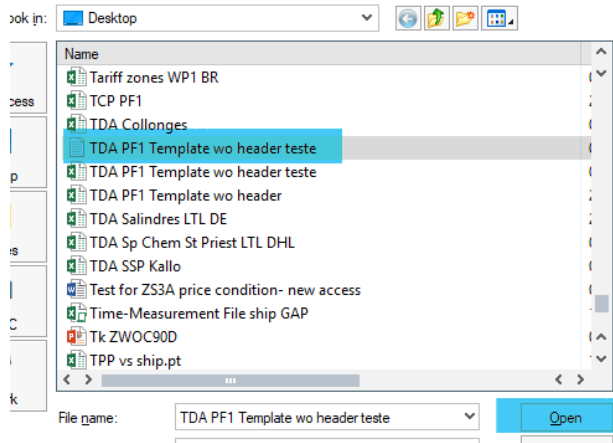
7.1 - To delete a route determination, you must have to follow the previous steps (from 6.1 to 6.5) but in your template, you have to delete the route code:



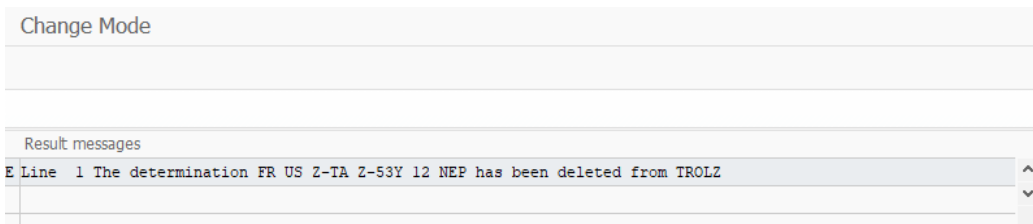
7.2 - Press the Upload Determination Deletion button:



7.3 - Select your txt file and press Open button:



## 7.4 - You will obtain a report of your upload:



## Workflow history

This view shows the 5 most recent entries. The complete workflow log is available from the 'Document Activity' menu item.

Mar 05, 2021	Actor	Type	Activity	Version
Published	Margarita Scerbakova	State	gave <i>Approvers</i> approval at 6:58 am	
		State	changed state to <b>Published</b> at 6:58 am	v3
To be approved	Margarita Scerbakova	State	gave <i>Approvers</i> approval at 6:58 am	
		Mar 04, 2021		
For Review	Paulo Fernando Sousa	State	assigned approval <i>Approvers</i> to  Margarita Scerbakova at 8:05 pm	
		State	changed state to <b>To be approved</b> at 8:05 pm	v3
	Paulo Fernando Sousa	State	gave <i>Reviewers</i> approval at 8:05 pm	
State		assigned approval <i>Reviewers</i> to  Paulo Fernando Sousa at 8:05 pm		
State	changed state to <b>For Review</b> at 8:05 pm	v3		
Jan 06, 2021				
Draft	Diego Lemos	Edit	updated the page at 10:12 am	