

# IMEP - PF1 ML synthesis



This report answers a specific need of GBUs operating in PF1 who wants to better understand the impact of the stock effects in their P&L. It can be used as the report [Z1K\\_CONS\\_ESTO](#) in PF1 but for a wider scope.

blocked URL

## Access the workbook

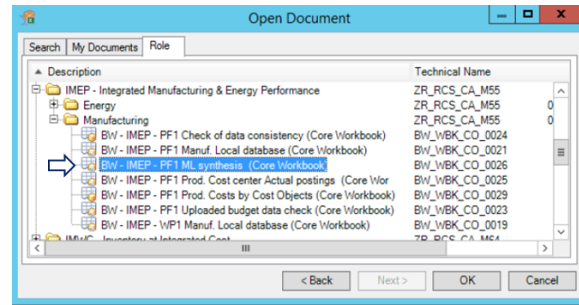
The workbook to be used is **BW\_WBK\_CO\_0026 - BW - IMEP - PF1 ML synthesis (Core Workbook)**

=> Go to Analysis for Office in excel

=> Click "Open Data Source"

Go to the tab "Role" and open the folder IMEP - Integrated Manufacturing & Energy Performance => Manufacturing

Double-click on the workbook **BW\_WBK\_CO\_0026 - BW - IMEP - PF1 ML synthesis (Core Workbook)** to open it



## Open the workbook

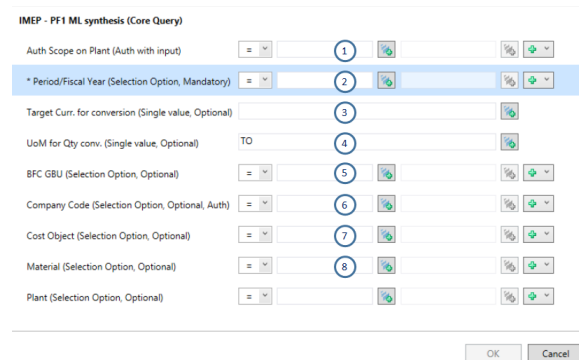
It is mandatory to enter the period (2) : MMM.YYYY

It is also recommended to enter at least a GBU (5), a company code (6) or a plant code (9)

It is also possible to enter:

- a target currency (3) to have all values converted with the same currency
- a Unit of Measure for the quantity conversion (ex: TO for Tons) (4)
- a Cost object (7)
- a material code (8)

Click "OK"



## The report

The report is displayed with the list of raw materials and the detail of stock movements

Material		* Beginning	In Production	In Others	Out	Out	Out
		Inv.	Amount	Receipts	Consumpt./Pr	Consumpt./Sal	Other consumpt.
		EUR	EUR	EUR	EUR	EUR	EUR
30156	SD	234,074.96	5,091,065.04		383,348.50	1,968,914.62	2,805,032.28
31851	SL	165,890.96	6,731,599.95		5,352,445.84	201,680.36	1,079,416.30
32979	SE		166,575.82			166,575.82	
32979	SE		64,762.60				64,762.60
31844	SL COLD	5,530.56		56,595.85			45,845.51
53667	BB OUT CL @INT			51,110.95			51,110.95
100139	NH3 AMMONIAC ANHYDRE * GR	21,884.72		15,922.50	23,037.89		685.01
101584	AMMONIA 25% * GR	13,306.73		16,638.70			17,093.59
103055	SE		876,843.12		876,843.07		0.05
103058	LMIE		14,029.26		13,640.89		388.37
103474	CONDENSED WATER		30,981.16				30,981.16

There are 20 columns in the report for amounts (blue) and quantities (green)

1. Inventory at the beginning of the period entered in the prompt
2. Production of the material during the period
3. Other receipts such as purchases
4. Consumption of the material in production
5. Sales

6. Other consumption such as transfer to another plant
7. Other movements of inventory
8. Ending inventory
9. Delta is the difference between the beginning and the ending inventory
10. Control that the difference between the beginning inventory and the ending inventory corresponds to the sum of all inventory movements. It should be equal to zero.

		Material	PF1_020/30156
			SD
* Beginning Inv. Amount	1	EUR	234,074.96
In: Production Amount	2	EUR	5,091,065.04
In: Others Receipts Amount	3		
Out: Consumpt./Prod Amount	4	EUR	383,348.50
Out: Consump./Sales Amount	5	EUR	1,968,914.62
Out: Other consumpt. Amount	6	EUR	2,805,032.28
In/Out: Others Amount	7		
* Ending Inv. Amount	8	EUR	167,844.60
Delta stock Amount	9	EUR	-66,230.36
Check Amount	10	EUR	
* Beginning Inv. Qty	1	TO	2,356
In: Production Qty	2	TO	49,210
In: Others Receipts Qty	3		
Out: Consumpt./Prod Qty	4	TO	3,712
Out: Consump./Sales Qty	5	TO	19,066
Out: Other consumpt. Qty	6	TO	27,162
In/Out: Others Qty	7		
* Ending Inv. Qty	8	TO	1,625
Delta stock Qty	9	TO	-731
Check Qty	10	TO	



This detail corresponds to the detail available in the transaction **CKM3 - Material Price Analysis** in PF1 by material code

Category		Quantity	Unit	Value
> Beginning Inventory	1	2.356.070,000	KG	234.074,96
∨ Receipts		49.209.505,000	KG	5.091.065,04
> Production	2	49.209.505,000	KG	5.091.065,04
* Cumulative Inventory		51.565.575,000	KG	5.325.140,00
∨ Consumption		49.940.265,000	KG	5.157.295,40
∨ Not Allocated	5	0,000	KG	0,02-
> Consumption	4	19.065.830,000	KG	1.968.914,62
> Production	3	3.712.125,000	KG	383.348,50
> Stock transfer	6	27.162.310,000	KG	2.805.032,30
> Ending Inventory	8	1.625.310,000	KG	167.844,60

## Going further with iMEP

- [IMEP - Characteristics](#) — List of Characteristics & Measures available in the BW application iMEP with the link to more detailed documentation when it exists.
- [IMEP - Index 1](#) — In the application iMEP, the characteristic Index 1 is a key element to understand to set-up an accurate report to follow production quantities and costs.
- [IMEP - PF1 Manuf. Local database](#) — This workbook gives a transversal and consolidated view of manufacturing costs (from sites to GBU level) for all plants managed in PF1.
- [IMEP - WP1 Manuf. Local database](#) — This workbook gives a transversal and consolidated view of manufacturing costs (from sites to GBU level) for all plants managed in WP1.
- [IMEP - PF1 Check of data consistency](#) — The aim of this workbook is to validate the quality of the data reported in imep for the sites in PF1.
- [IMEP - PF1 ML synthesis](#) — This report answers a specific need of GBUs operating in PF1 who wants to better understand the impact of the stock effects in their P&L. It can be used as the report Z1K\_CONS\_ESTO in PF1 but for a wider scope.