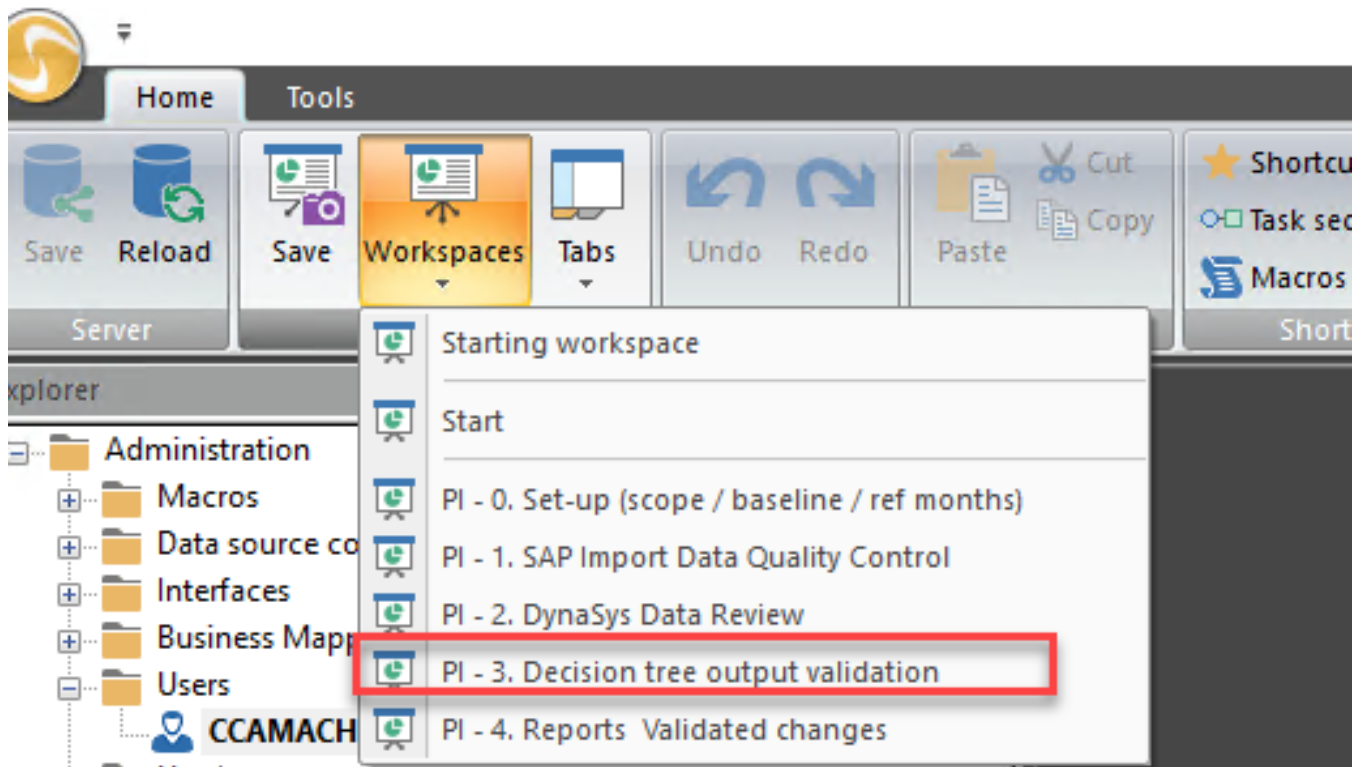


iii. Decision Tree

Decision Tree

1. Decision tree Raw Materials & Intermediates
 - a. Review Inputs
 - b. Review Outputs (RM - Intermediates Output)
 - c. SHS Validation
2. Decision tree Finish Goods
 - a. Review Inputs
 - b. Review Outputs (FG Output)
 - c. SHS Validation

To access the workspace, please click in Workspaces > "PI. 3. Decision tree output validation"



Where we are in terms of P&I DynaSys process:

Having checked & corrected SAP/DynaSys inputs, we need to review no the proposed SHS by the Decision tree calculation.

