

QLIKVIEW

QlikView (QV) has been used by Solvay as a multi-source data-visualisation tool since 2013.

With more than 1000 active users, QV is now one of the main corporate BI solution within Solvay group.

SERVER CONFIGURATION & BACKUP POLICY

IBM host 2 servers : **PROD (WDCQVAP21) & DEV (WDCQVAT21)**

Here are the level of service and **backup policy** communicated by Adagio team (Email from 5th Sept)

- **WDCQVAP21** : SLA Class Level "2"

availability = 99,5% per calendar month

disaster recovery in max. 5 days

max. data loss: one day

- **WDCQVAT21** : SLA Class Level "3"

availability = 99% per calendar month

NO disaster recovery

max. data loss: one week

IBM ensures the "data loss" commitment by executing **daily backups for WDCQVAP21 and weekly backups for WDCQVAT21.**

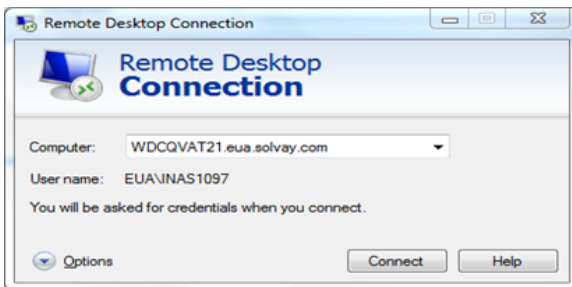
We have no knowledge about the exact timing of the backup per server and it can change over time. This because IBM schedules the backups for our almost 300 servers once a day / a week acc. to their convenience to optimize the usage of their backup infrastructure.

How to login to server

Step 1: Go to Run type 'MSTSC'

Step 2: In computer drop down give the server name you want to connect. In our case type "WDCQVAT21.eua.solvay.com" (which is a development server)

Step 3: Click on connect as shown below.



Step 4: Username and password window will be prompted. Give username as 'EUA\username' and your Solvay password. Once you will click on Ok, you will be connected/ redirected to the server.

How to logout from Server

To logout from server go to windows start > click on your account (on extreme right) > click 'Sign Out' as shown below.

Best practice : ALWAYS DISCONNECT yourself from the server when leaving for the night and week-ends : an open session is RAM consuming.

Note: Never click on power button while disconnecting from server.

Dashboards & its Categories

SBS

- [SBS Dashboards](#)

CRM

- [CRM Analytics Dashboard](#)
- [CRM COMPLAINTS Dashboard](#)

SUPPLY CHAIN

- [PI Supply Chain](#)
- [EP Supply Chain](#)
- [Novecare Supply Chain](#)
- [Supply Chain Excellence](#)

SALES & MARKETING

- [Novecare Price Advisor](#)

FINANCE & CONTROLLING

- [Fixed Cost Dashboard](#)
- [Capex Dashboard](#)
- [Colmar Dashboard](#)

PURCHASING

- [DPO and Purchasing Performance Visibility](#)

HUMAN RESOURCE

- [HR Dashboard](#)

SBS IS

- [RCS KPI](#)
- [Qlikview KPI](#)

