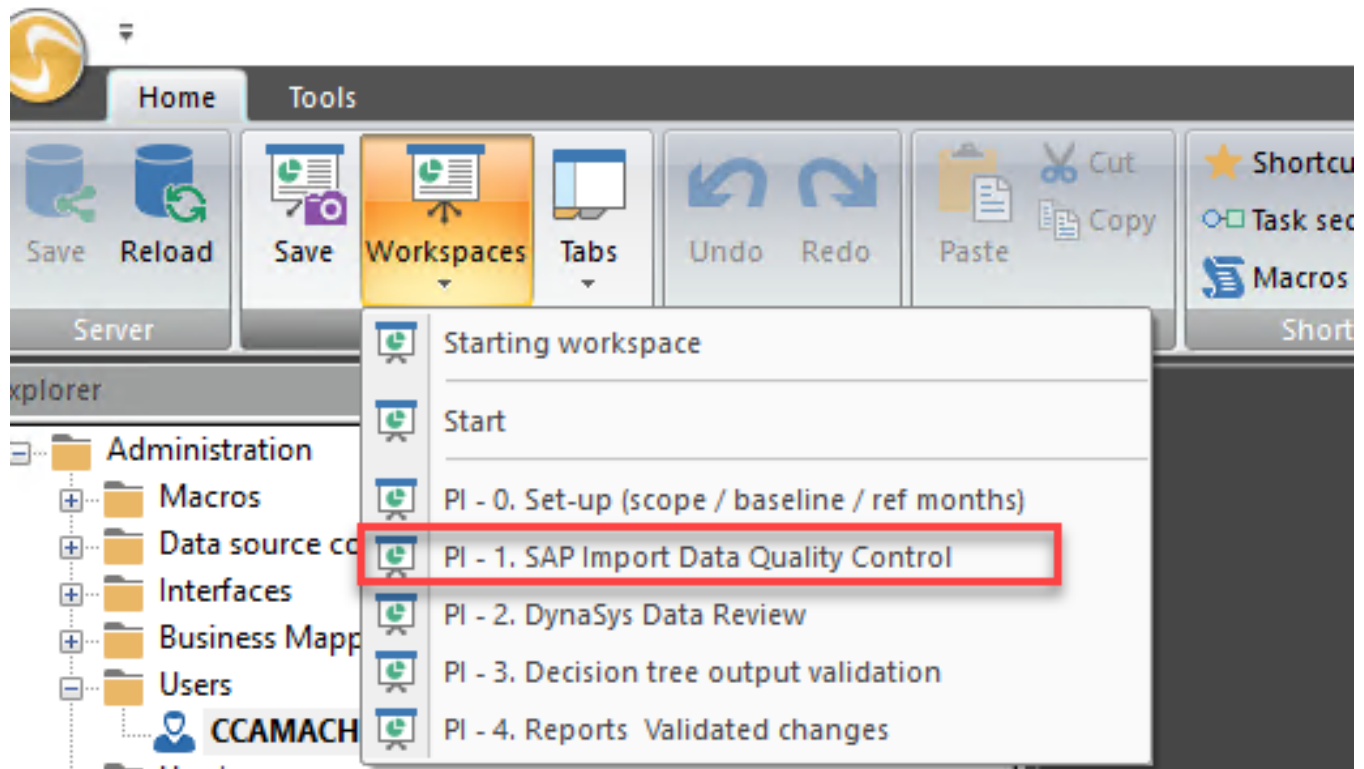


# i. SAP Import Data Quality Control

1. Data quality Dashboard
2. Control Production / Procured LT (SAP)
3. Control ATP Code, MTO-FB lot size
4. Control SHS, Catalog LT, SHS RLT
5. Control SHS RLT, SS
6. Control of SAP LT overridden inside DiP

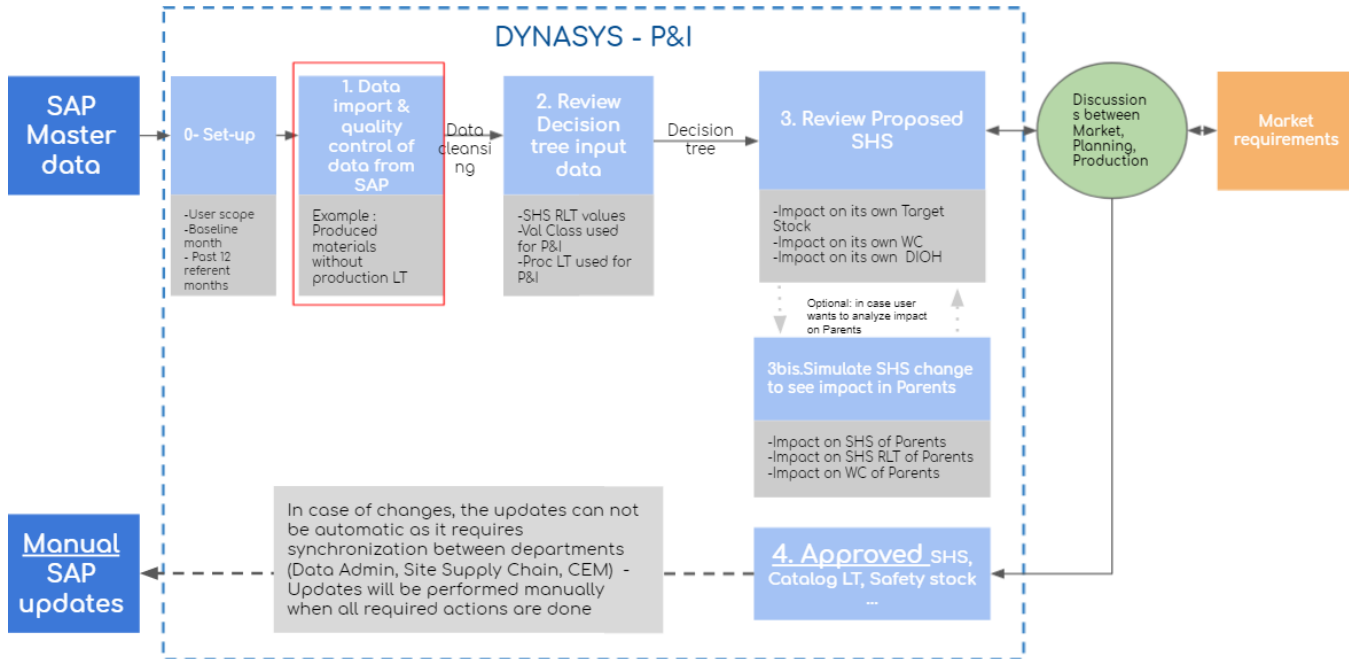
To access the workspace, please click in Workspaces > "PI. 1. SAP Import Data Quality Control"



Where we are in terms of P&I DynaSys process:

Having done the Set-up of User's scope in the previous step, the User will first need to check the SAP-data inputs of the P&I Process.

# P&I in DynaSys Process



After checking SAP inputs, the user will go on the check the DynaSys inputs in the following step. More info here: [DynaSys inputs](#)