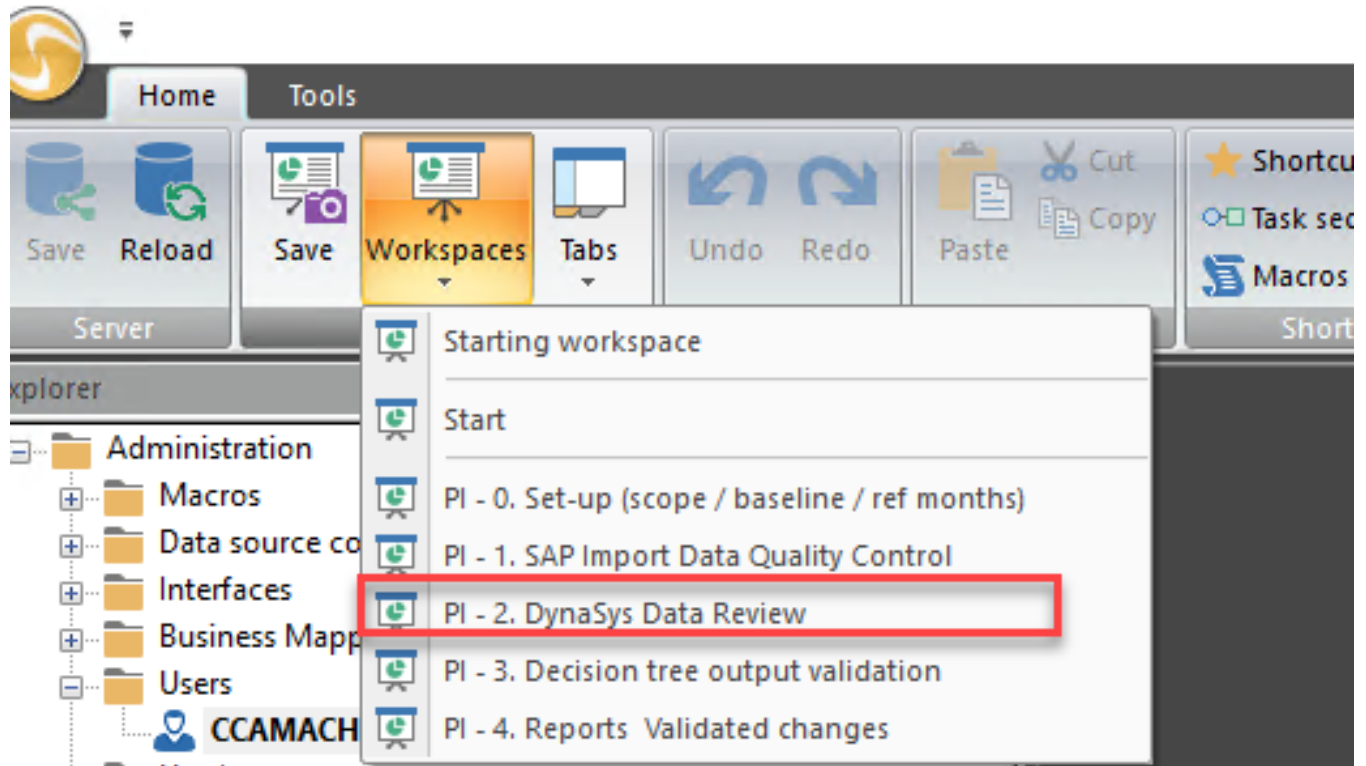


## ii. DynaSys Data review

To access the workspace, please click in Workspaces > "PI. 2. DynaSys Data Review"



Where we are in terms of P&I DynaSys process:

Having checked & corrected SAP inputs, we will now check & complete DynaSys inputs, which will be used in the step after (Decision tree calculation).

# P&I in DynaSys Process

