

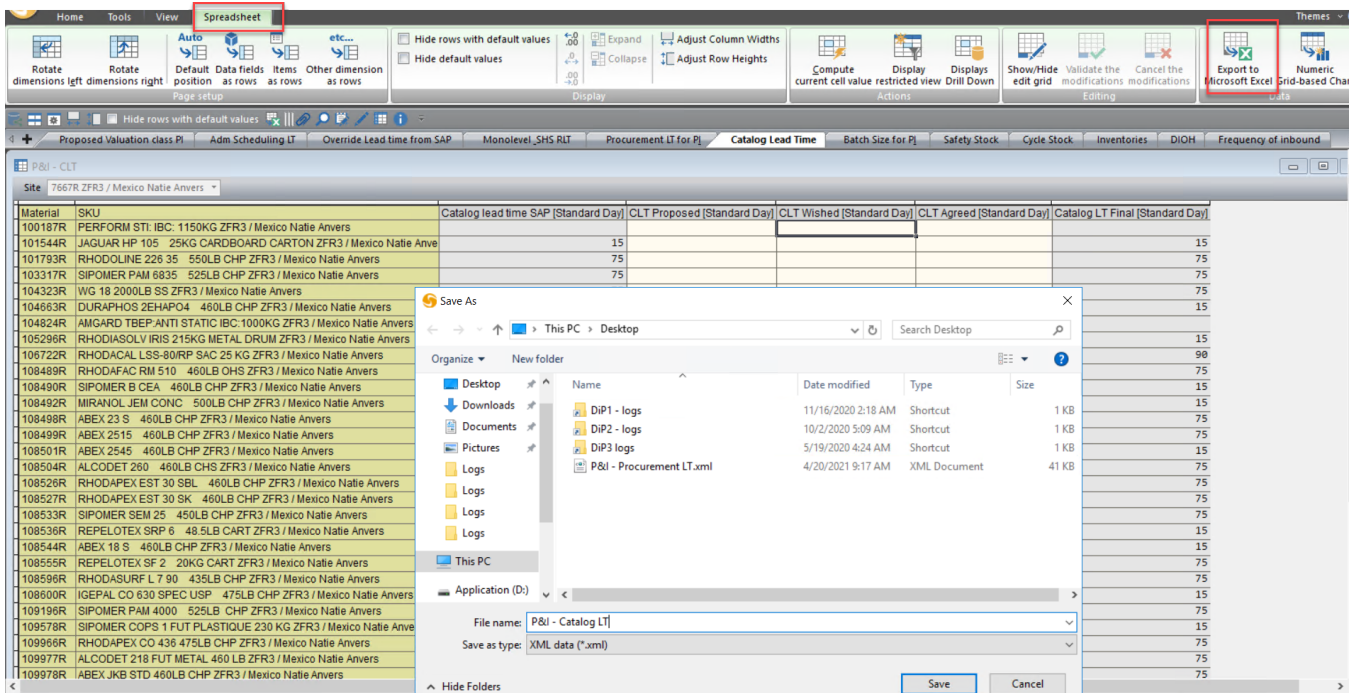
a) via Export/Import Microsoft Excel

Usefulness: this functionality is useful when we want to perform a Mass upload from an Excel file, rather than keying in values one by one inside the tool.

1- Select the view you want to export > Spreadsheet > Export to Microsoft Excel.

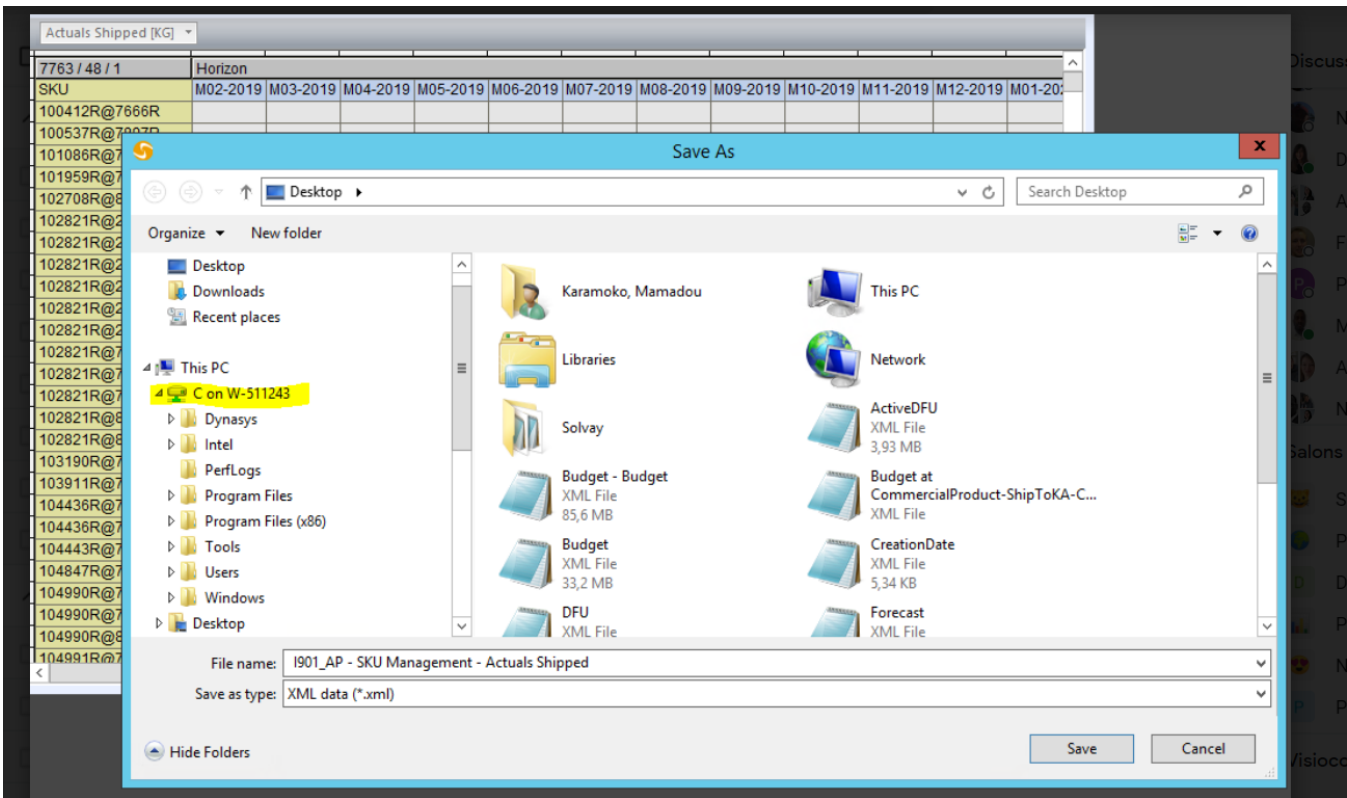
Choose the destination folder and leave the file format in .XML.

In the following example, we will export "P&I - CLT" view (WS DynaSys Data Review > "Catalog Lead time tab")

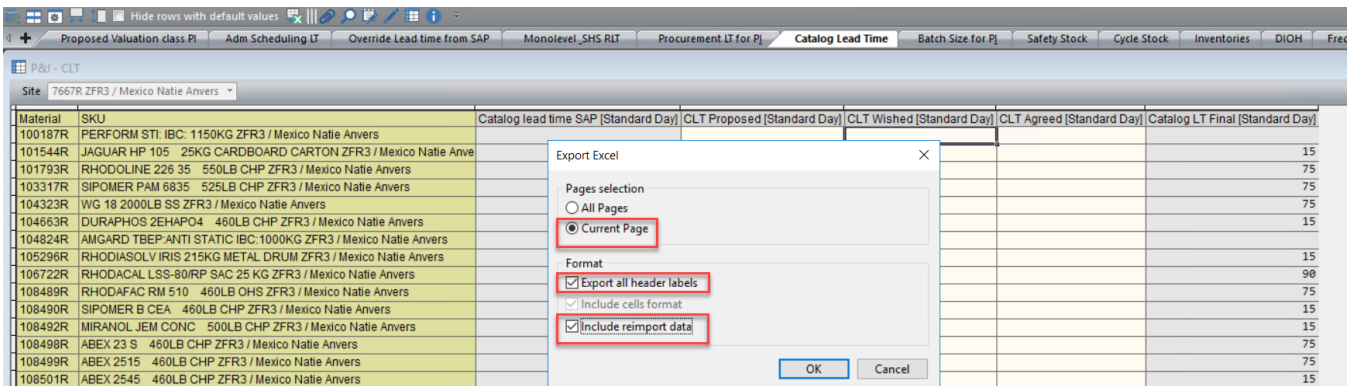


If the tool is not set up well yet, here is the way to download the file directly on your Desktop, you

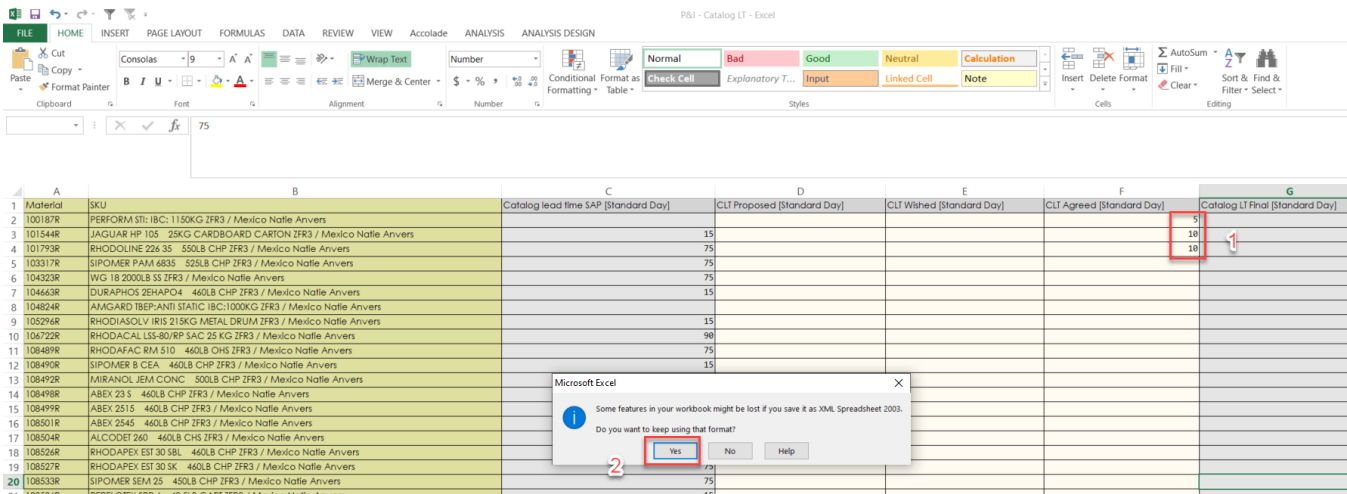
1. need to click on the server "C on W-XXXXXX" under "This PC"
2. Click on your Name
3. Select Desktop
4. Save



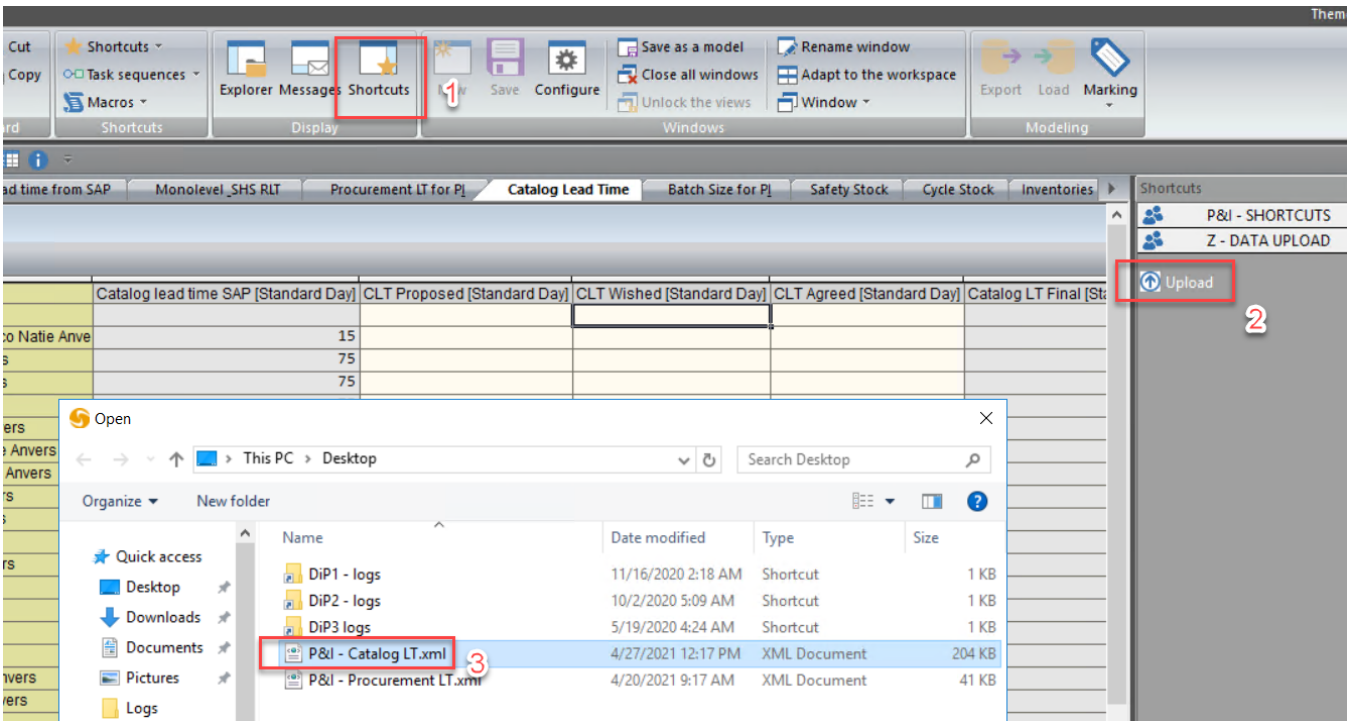
2- Tick the options below



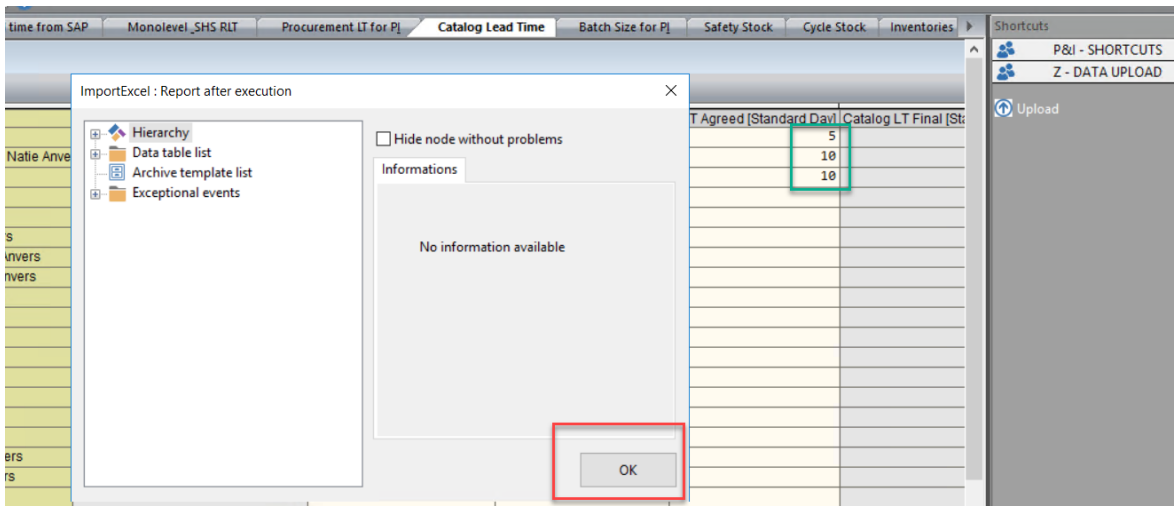
3- Retrieve the .XML file, open and edit the values. Be careful to tick in "keep existing format" when saving.



4- Go back to DynaSys DiP tool, click Shortcuts > Z - Data Upload > Upload and select the file



If any pop up, click in OK



5- You will retrieve the values newly imported

	Catalog lead time SAP [Standard Day]	CLT Proposed [Standard Day]	CLT Wished [Standard Day]	CLT Agreed [Standard Day]	Catalog LT Final [Standard Day]
IBC: 1150KG ZFR3 / Mexico Natie Anvers				5	5
05 25KG CARDBOARD CARTON ZFR3 / Mexico Natie Anve	15			10	10
226 35 550LB CHP ZFR3 / Mexico Natie Anvers	75			10	10
16835 525LB CHP ZFR3 / Mexico Natie Anvers	75				75
3 SS ZFR3 / Mexico Natie Anvers	75				75
EHAP04 460LB CHP ZFR3 / Mexico Natie Anvers	15				15
ANTI STATIC IBC:1000KG ZFR3 / Mexico Natie Anvers					
IRIS 215KG METAL DRUM ZFR3 / Mexico Natie Anvers	15				15
SS-80/RP SAC 25 KG ZFR3 / Mexico Natie Anvers	90				90
M 510 460LB OHS ZFR3 / Mexico Natie Anvers	75				75