

C22 - How to connect to the mobile version of Convergence (Salesforce) ?

Overview

As a buyer, I want to connect to Convergence on my smartphone or on my tablet.

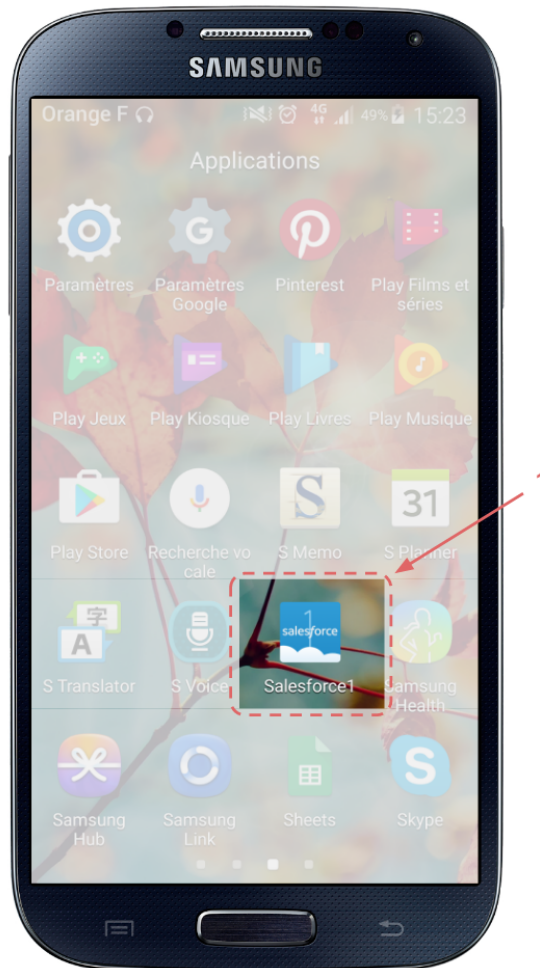
Table of content

- [Step-By-Step](#)
- [Related articles](#)
- [Need help](#)
- [How to ask for assistance?](#)

Step-By-Step

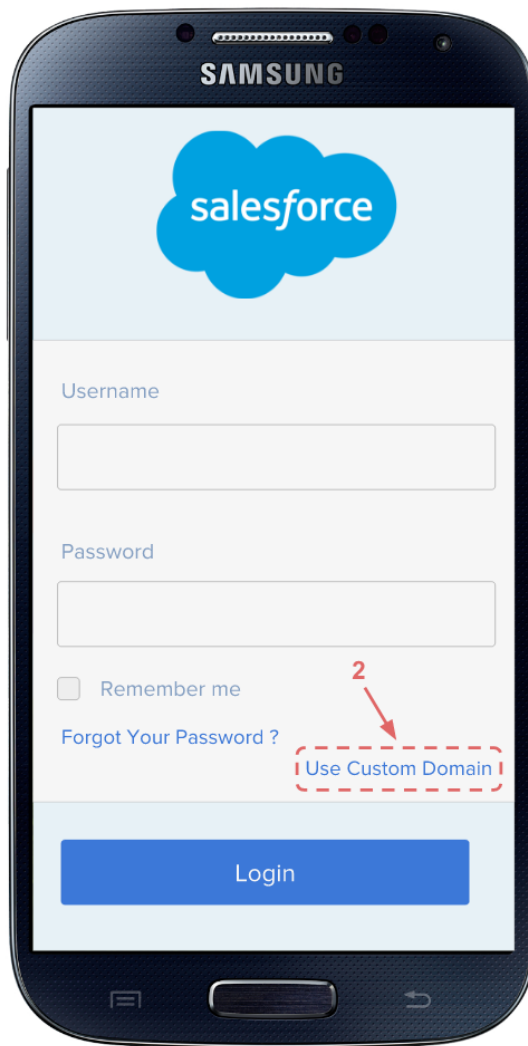
STEP 1

Install the **Salesforce** app and launch it.



STEP 2

Click on **Use Custom Domain**.



STEP 3

Type in "solvaysrm" and click on **Continue**.



STEP 4

Type in your **Solvay login** and **password**. Then click on **Sign in**.

Welcome to the mobile version of Convergence !



Related articles

- [B - Salesforce terminology](#)
- [A11 - Introduction to Convergence](#)
- [A1220 - Navigation](#)

Need help

How to ask for assistance?

Dear Salesforce Convergence user,

For any question or issue regarding Convergence, please :

- create a request in **Service One** with the following information:
 - I want to update data in Convergence [Maintain data ownership in CONVERGENCE](#)
 - I want to mass upload procurement data [Maintain procurement data in CONVERGENCE](#)
 - Process : Data & Analysis
 - PTP-Subprocess: Purchasing Tools Support
 - PTP-Category: Convergence

For account creation, please refer to [here](#).

Thank you very much,

Convergence Team.

