

PA transfer structure

Definition

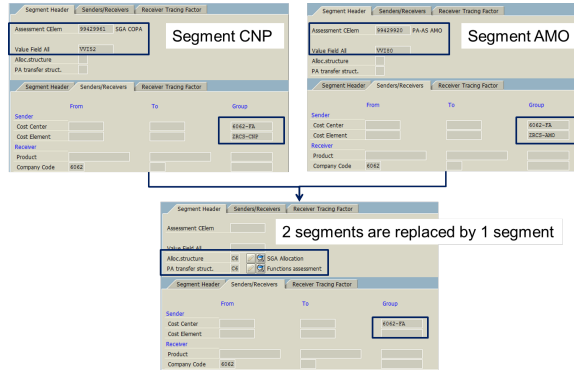
For many cost centers, depending on the original cost elements posted in them, we have to allocate to different P&L lines (in COPA).

Sometimes it may be necessary to track these allocations with separate assessment cost elements.

This can be done creating several segments for each cost center or cost center group allocation.

But we may simplify this, using PA transfer structure to unify all the multiple allocation into a single segment.

With this, we may also adopt standardized assessment cycles for all companies, treating equally the allocation of cost elements and cost centers to CO/PA.

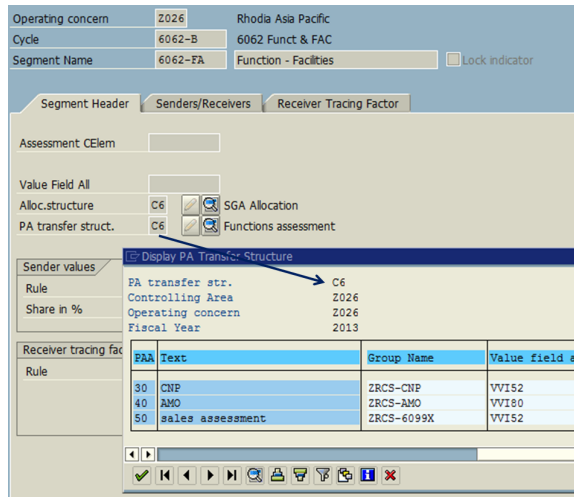


From 01 Jan 2022 PA transfer structures are customized using sub-groups from [Rules - Cost element Group ZSOLV](#)

Each sub-group is linked to specific KE30 value fields

For segments that need more than one assessment cost element, a specific [Allocation structure](#) was created, linking each cost element sub-group to its respective assessment cost element

By informing in each segment the PA transfer structure and either an [assessment cost element](#) or an [Allocation structure](#) :



- We'll have just one segment per cost center or cost center range / group;
- We will be able to split the amounts allocated into more than one assessment cost element, make it easier in the cost center to track how it was assessed.
- We eliminate the need to inform sender cost elements in the sender / receiver tab.

PA transfer structure in WP1

In WP1 there are 16 transfer structures

PA transfer structure		Allocation structure
C1	Site	C1
C2	VSE	C2

Two of them have be used with a single assessment cost element, but for the others they are combined with [Allocation structure](#), allowing more than one assessment cost element to be used.

C3	Industrial services	C3
C4	Admin & Commercial services	C4
C5	R&D services	C5
C6	Functions	C6
C7	SG&A Commercial	
C8	SG&A Administrative	
C9	R&D	C9
CA	Restructuring	99429940
CB	Other Gains & Loss	99429999
SY	Non-recurring IAS19	99429999
CC	Product Preparation Costs	CC
CD	Miscellaneous Products	
CN	Plant storage & loading costs	
C0	Fixed Logistic Costs	

PA transfer structure in PF1

In PF1 there are 11 transfer structures. They are combined with [Allocation structure](#), allowing more than one assessment cost element to be used.

	PA transfer structure	Allocation structure
S1	Commercial (cycle)	S1
S2	Administrative (cycle)	S2
S3	Function (cycle)	S3
S4	R&I (cycle)	S4
S5	Miscellaneous (cycle)	S5
S6	Plant storage, loading (cycle)	S6
S7	Oth recurr oper inc/exp (cycle)	S7
S8	Period: FC & Depr (cycle)	S8
SY	Non-recurring IAS19	SY
T0	Engineering (cycle)	C9
PA	Rep. Cctr. -> COPA (cycle)	PA
CB	Other FI Gains & Loss (cycle)	