

Forecast Raw Material Procurement Dashboard

The dashboard contains two views :

- By GBU
- By Stream

There are color codes to view the historical & the forecast data as follow :

Blue : Historical data (HD)

Green : Forecast data (FC)

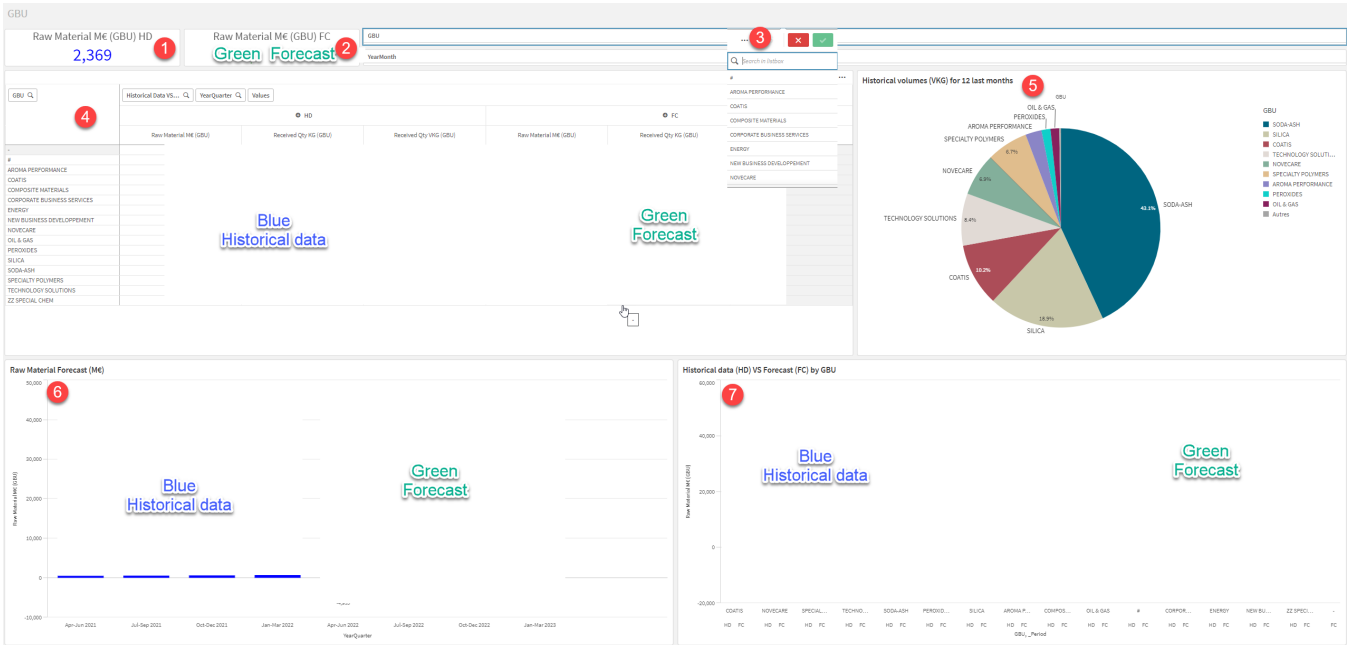
Raw Material
Data last loaded: May 5, 2022, 10:28 AM
Published: May 4, 2022, 10:23 AM
Published to: Validation

Sheets | Bookmarks | Stories

▼ Public sheets (3)

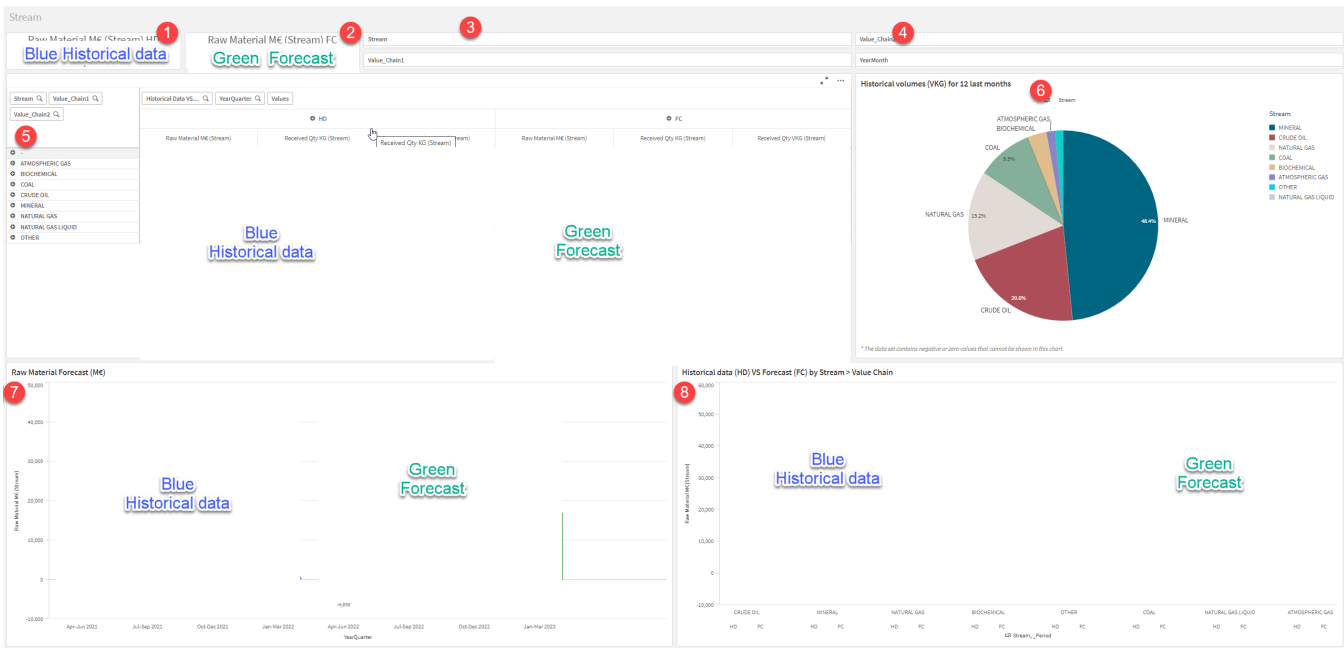
- Welcome
- GBU
- Stream

Dashboard by GBU :



1	Historical Spend (Last 4 quarters)
2	Forecast Spend (Next 4 quarters)
3	Filter by GBU
4	Data by GBU (historical in blue and Forecast in Green) HD : Historical FC : Forecast
5	Historical Volume in VKG
6	Historical Spend and Forecast Spend
7	Historical Spend and Forecast Spend by GBU

Dashboard By Stream



1	Historical Spend by stream (Last 4 quarters)
2	Forecast Spend (Next 4 quarters)
3	Filter by Stream
4	Filter by Value Chain
5	Data by GBU (historical in blue and Forecast in Green) HD : Historical FC : Forecast
6	Historical Volume in VKG
7	Raw Material Historical & Forecast by Quarter
8	Historical Spend and Forecast Spend by Stream