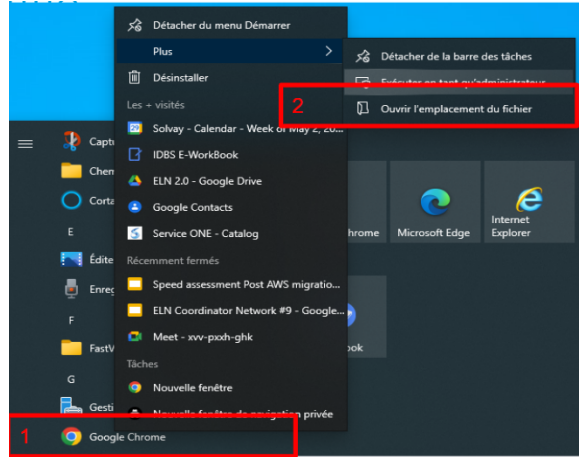


How to use the ELN with a LabPC (or other shared devices)

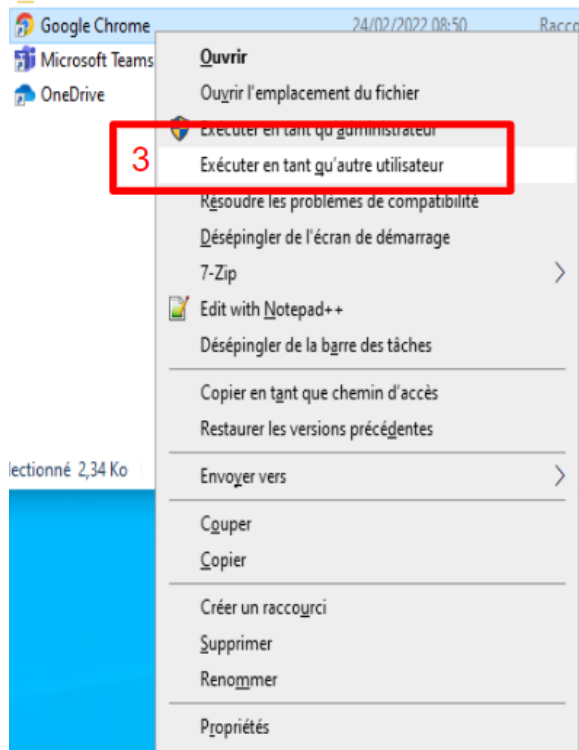
The ELN is using SSO (Single Sign On) as authentication method. It means that the ELN is using the **credentials of the user who logged in to the Windows session** of the computer.

If you are using a **LabPC** or are **not logged in to the computer with your own account**, make sure to follow the steps below:

1. From the start menu, right click on Chrome
2. Select "open the file location"

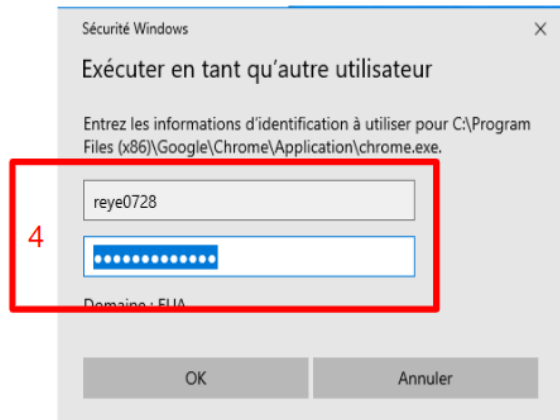


3. Press shift & right-click on the Chrome icon and select "Run as different user"



4. Enter your credentials and click on ok
-> You will be able to connect to the ELN on your account even on a LabPC

5. GO to your [ELN](#)



To comply with Solvay's Intellectual Property policy, any user should **make sure he is connected with her/his account and follow this procedure when using LabPCs or other shared devices.**