

Co\$ta - Responsible cost center FI or COPA

Co\$ta - Responsible cost center FI or COPA

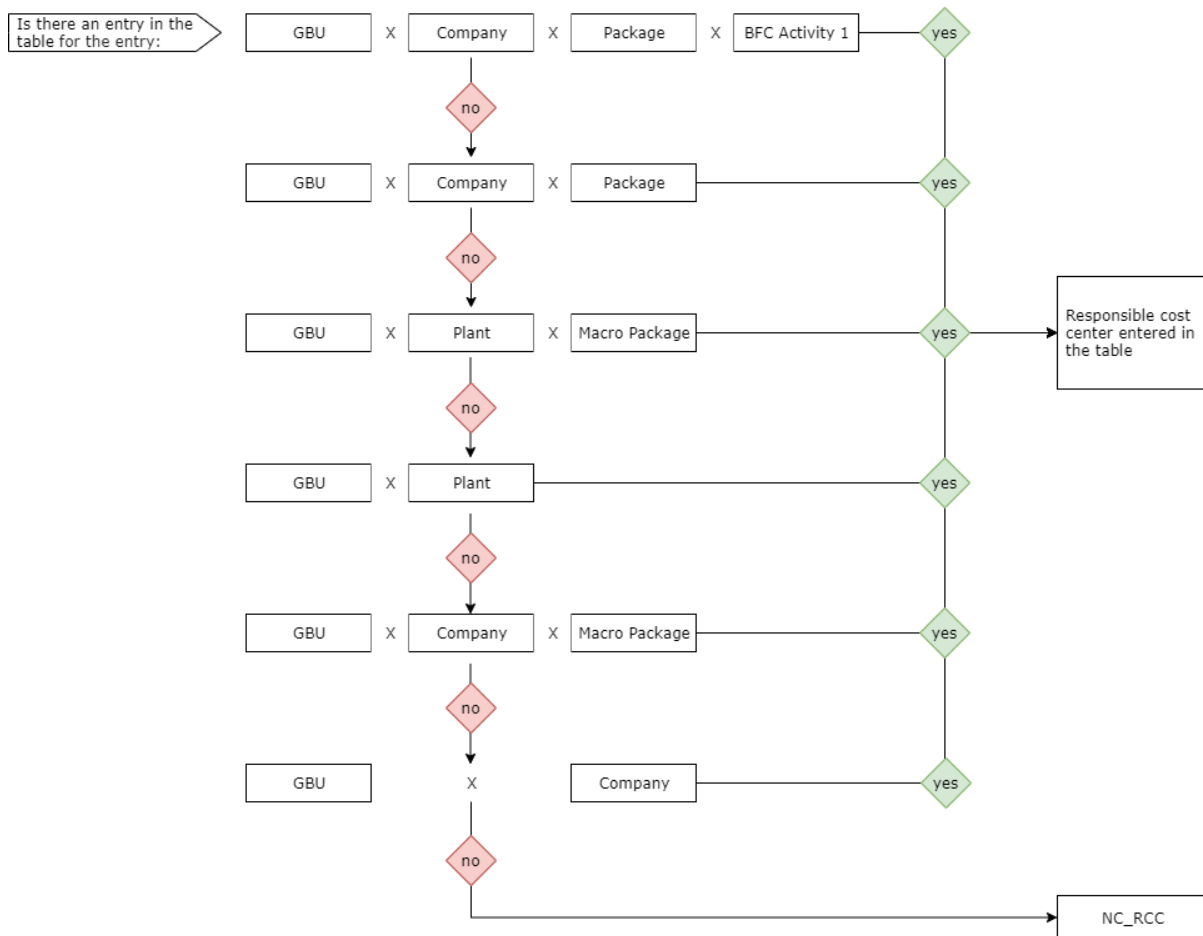


>> Back to the [Co\\$ta project home page](#)

When the [origin flow](#) is FI or COPA, there is no responsible cost center by default.

A table needs to be used to infer the Responsible cost center using the combination of the a GBU, a Macro package or a Package, a Company code and/or the plant code.

Different combination can be entered and the determination rule of the responsible cost center follows the following sequence:



STEP 1

Download the file [here](#) and update it with the list of combinations to be used for the determination of responsible cost centers (you can leave some fields blank):

GBU	Cost macro-package	Cost package	BFC Activity 1	Company code	Plant	Controlling area	Responsible cost center
-----	--------------------	--------------	----------------	--------------	-------	------------------	-------------------------

<i>Enter the BFC GBU code</i>	<i>Enter a macro- package</i>	<i>Enter a package</i>	<i>Enter an Activity 1</i>	<i>Enter a company code</i>	<i>Enter a plant</i>	<i>Enter the controlling area corresponding to the company code</i>	<i>Enter the responsible cost center</i>
ex: PE	ex: P00003	ex: P10012	ex: CSNR	ex: 0237	ex: CJEI	ex: CHEF	ex: X481200000
...							...

These rules are stored in DSO APCOCT15

STEP 2

Once the file is ready, follow the procedure [Co\\$ta - Flat Files loading](#) to upload it in BW.