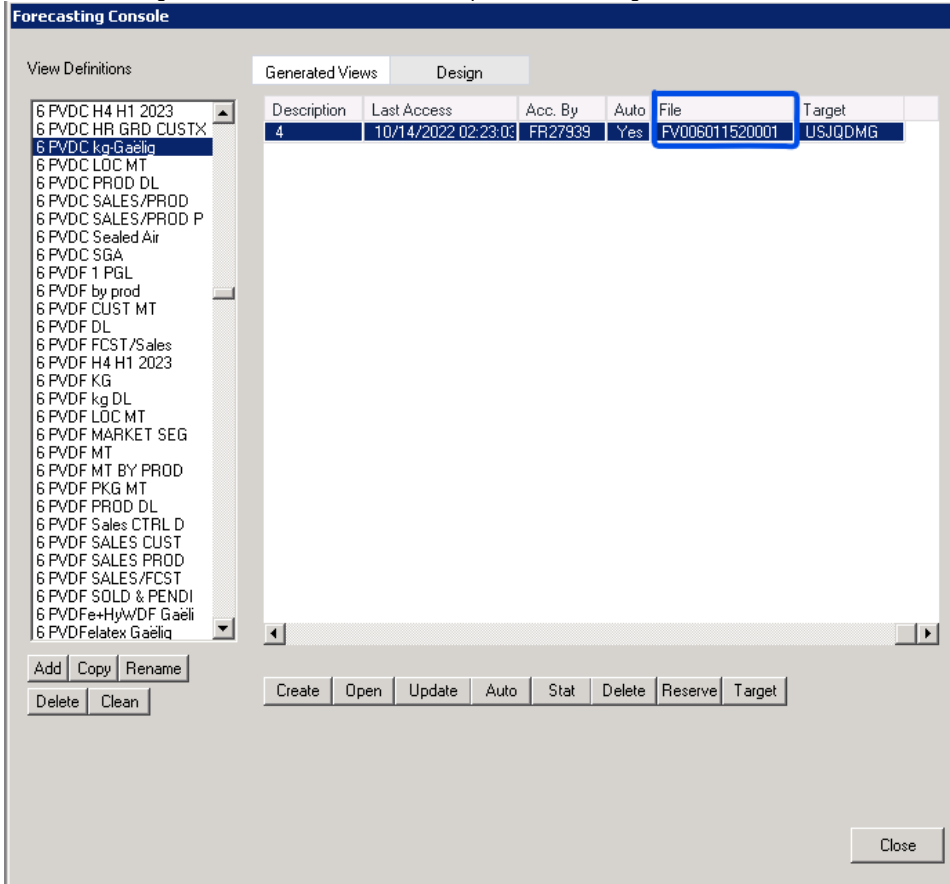


How to export the forecast into Excel

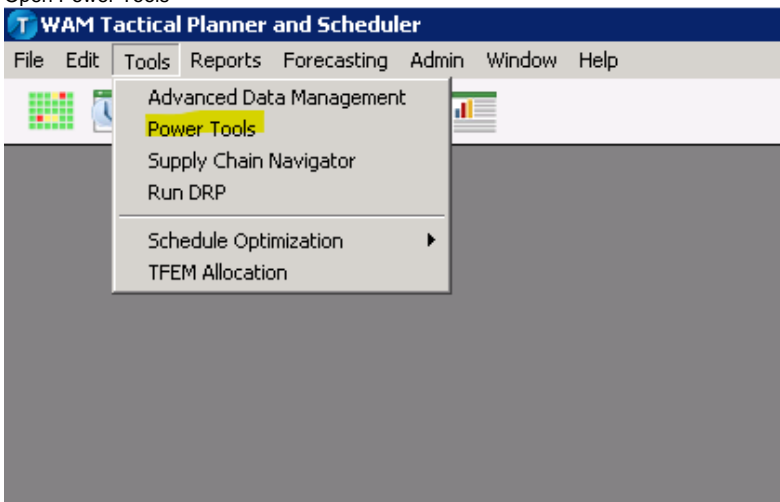
I want to export the data of a forecast view into Excel. How do I do that?

Step-by-step guide

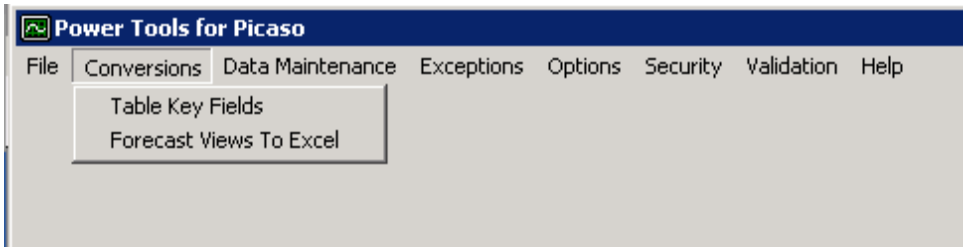
1. Each view is assigned to one or more forecast file. Open the forecasting console to find out.



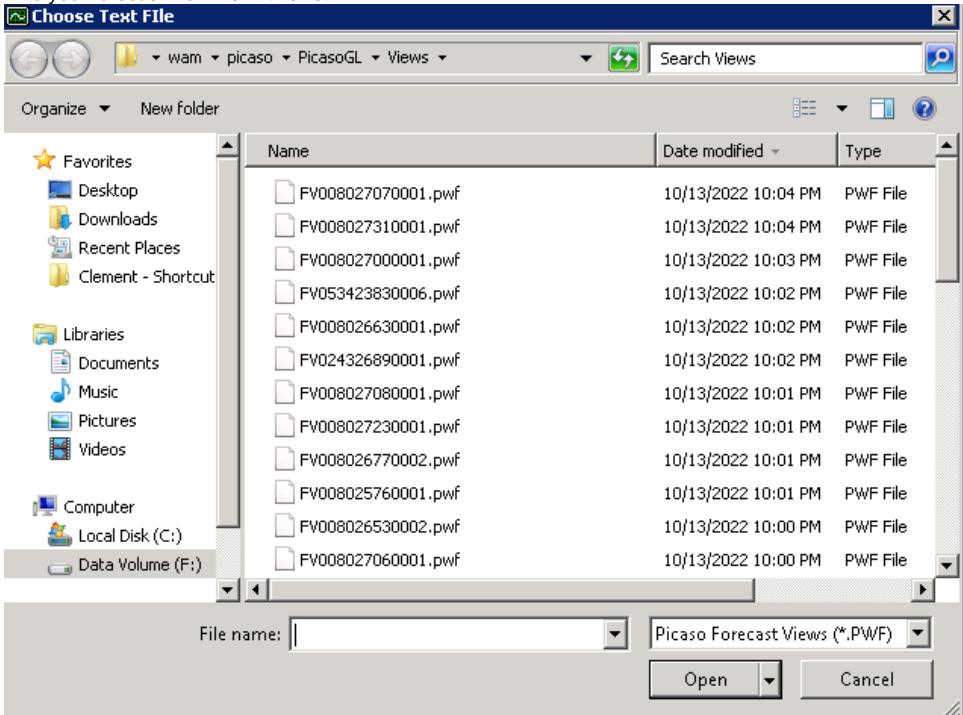
- 2.
3. Make sure you identify the file that is associated to the active view you are interested in.
4. Open Power Tools



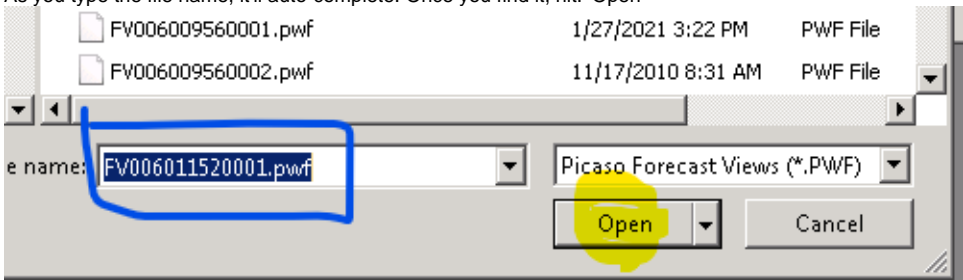
- 5.
6. Choose: 'Conversion>>Forecast Views to Excel'



- 7.
- 8. Find your forecast view file in this list:



- 9.
- 10. As you type the file name, it'll auto-complete. Once you find it, hit: 'Open'




- 11.
- 12. It opens an Excel file. You're all set

FV006011520001 [Compatibility Mode] - Excel

Nachawati, Clement

PrdFId8	Product	SKUCode	Sold to Name	Ship-to	Ship-to Country	Package	Loc	Cust S
1	Additives	EMULDUR 381 A	165672 ACG PHARMAPACK PVT. LTD.	ACG PHARMAPACK PVT. LTD.	IN	IBC, 1000kg	TAW	1000
3	Additives	EMULDUR 381 A	165672 AMARTARA PRIVATE LIMITED	AMARTARA PRIVATE LIMITED	IN	IBC, 1000kg	TAW	1000
4	Additives	EMULDUR 381 A	165672 AMARTARA PRIVATE LIMITED	AMARTARA PRIVATE LIMITED	IN	IBC, 1000kg	TAW	1000
5	Additives	EMULDUR 381 A	165672 BILCARE LIMITED	BILCARE LIMITED	IN	IBC, 1000kg	TAW	1000
6	Additives	EMULDUR 381 A	165672 CAPRIHANS INDIA LIMITED	CAPRIHANS INDIA LIMITED	IN	IBC, 1000kg	TAW	1000
7	Additives	EMULDUR 381 A	165672 CHENGDU HUIJI GROUP	CHENGDU HUIJI GROUP	CN	IBC, 1000kg	TAW	1000
8	Additives	EMULDUR 381 A	165672 FENOPLAST LIMITED	FENOPLAST LIMITED	IN	IBC, 1000kg	TAW	1000
9	Additives	EMULDUR 381 A	165672 ICM PLASTICS PVT. LTD.	ICM PLASTICS PVT. LTD.	IN	IBC, 1000kg	TAW	1000
10	Additives	EMULDUR 381 A	165672 INDIAN CORK MILLS PRIVAT	INDIAN CORK MILLS PRIVAT	IN	IBC, 1000kg	TAW	1000
11	Additives	EMULDUR 381 A	165672 LIVEO RESEARCH AG	LIVEO RESEARCH SINGAPORE	SG	IBC, 1000kg	TAW	1000
12	Additives	EMULDUR 381 A	165672 NOVA NORDEPLAST INDUSTRI	NOVA NORDEPLAST INDUSTRI	BR	IBC, 1000kg	TAW	1000
13	Additives	EMULDUR 381 A	165672 PLAMI S A de C V	PLAMI S A DE C V	MX	IBC, 1000kg	TAW	1000
14	Additives	EMULDUR 381 A	165672 RAJAT VINYL S PVT. LTD	RAJAT VINYL S PVT. LTD	IN	IBC, 1000kg	TAW	1000
15	Additives	EMULDUR 381 A	165672 SCHWABE INCOAT	SCHWABE INCOAT	IN	IBC, 1000kg	TAW	1000
16	Additives	EMULDUR 381 A	165672 SHANGHAI SAN KAI IMP&EXP	SHANGHAI SAN KAI IMP&EXP	CN	IBC, 1000kg	TAW	1000
17	Additives	EMULDUR 381 A	165672 UNIWORTH ENTERPRISES LLP	UNIWORTH ENTERPRISES LLP	IN	IBC, 1000kg	TAW	1000
18	Additives	EMULDUR 381 A	165672					
19	Additives	EMULDUR 381 A	165673 SUDDHA PHARMA PACK(BD) L	SUDDHA PHARMA PACK(BD) L	BD	Drum, 120 kg	TAW	1000
20	Additives	EMULDUR 381 A	165673					
21	Additives							
22	Latex Food	PVDC A036	10452 INNOVIA FILMS LTD	INNOVIA FILMS LTD	GB	BULK	TAW	1000
23	Latex Food	PVDC A036	10452					
24	Latex Food	PVDC A050	10515 AGFA GEVAERT NV	AGFA GEVAERT NV	BE	BULK	TAW	1000
25	Latex Food	PVDC A050	10515 CHRISTIAN BOURRASSE SA	CHRISTIAN BOURRASSE SA	FR	BULK	TAW	1000
26	Latex Food	PVDC A050	10515 FORMULATED POLYMER PRODU	FORMULATED POLYMER PRODU	GB	BULK	TAW	1000
27	Latex Food	PVDC A050	10515 GASCOGNE FLEXIBLE	GASCOGNE FLEXIBLE	FR	BULK	TAW	1000
28	Latex Food	PVDC A050	10515					

13.

 Tips: what if you cannot find the pwf file? Find your answer [here](#)

Related articles

- [Access Picaso / EP / PicReport](#)
- [Run the weekly adherence Report](#)
- [Run the monthly adherence Report](#)
- [Redirect a forecast from a ship-to to another ship-to](#)
- [Setup a material in Picaso](#)