

Supply / Demand Monitoring (aka, the grids)

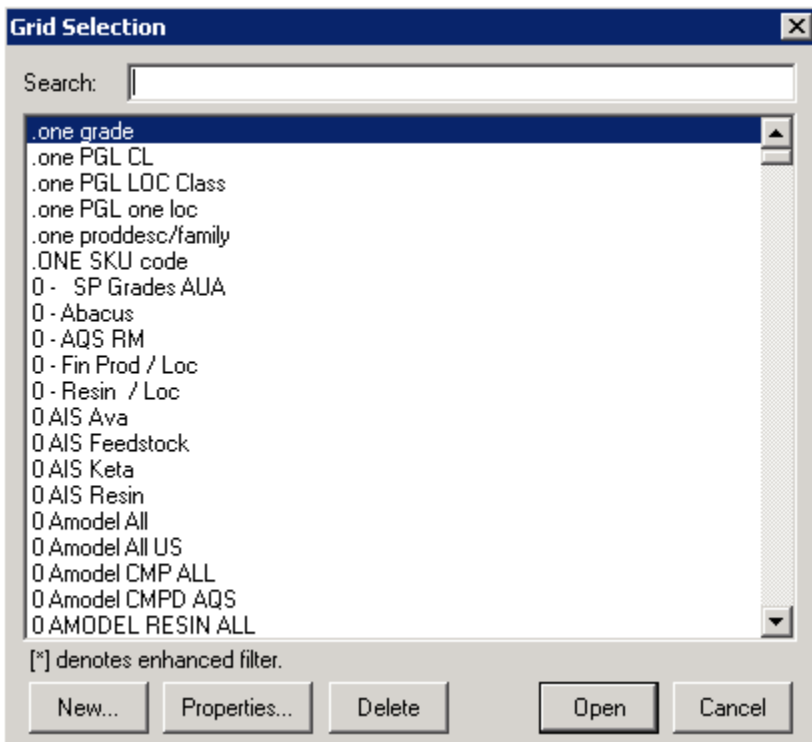
- The Grid
 - Open a grid
 - Grids properties:
 - Color coding & icons
 - Sorting
 - Stats
 - Months
 - With or without forecast
 - Hammer settings
 - Change your horizon
 - Related grid
 - Column layout:
- Product / Location specific supply / demand data
 - Plot
 - Summary
 - Lots
 - Inbound and Outbound orders
 - Ignoring an order:
 - Status of an order
 - Forecast Overview
 - Remaining FC
 - FC v Ord
 - Production Schedule Overview
 - WIP
 - Equivalent
 - General
 - Inventory Target
 - TargetPlot
- Distribution Requirement Planning

The Grid

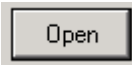
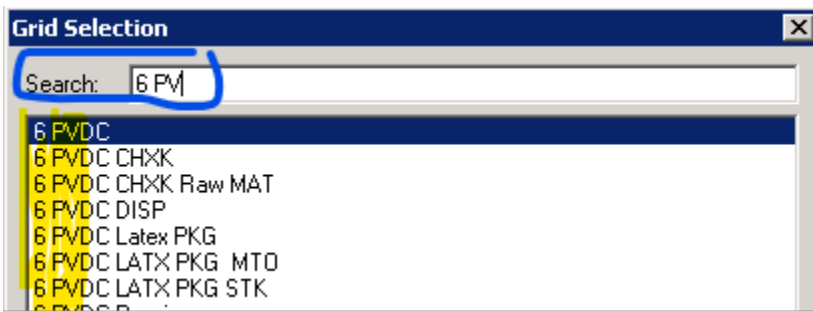
The grids are visual alert monitors, that give you a general feel of the projected inventory per product/package/location.

Open a grid

In Picaso, hit this icon: . It opens a list of Grids:



Use the search to find the one you need.



Once you find the one you were looking for, hit:

The grids are sorted alphabetically.

Each grid's name starts with a number. Find the meaning of these numbers [here](#)



You may also create a grid (hit:

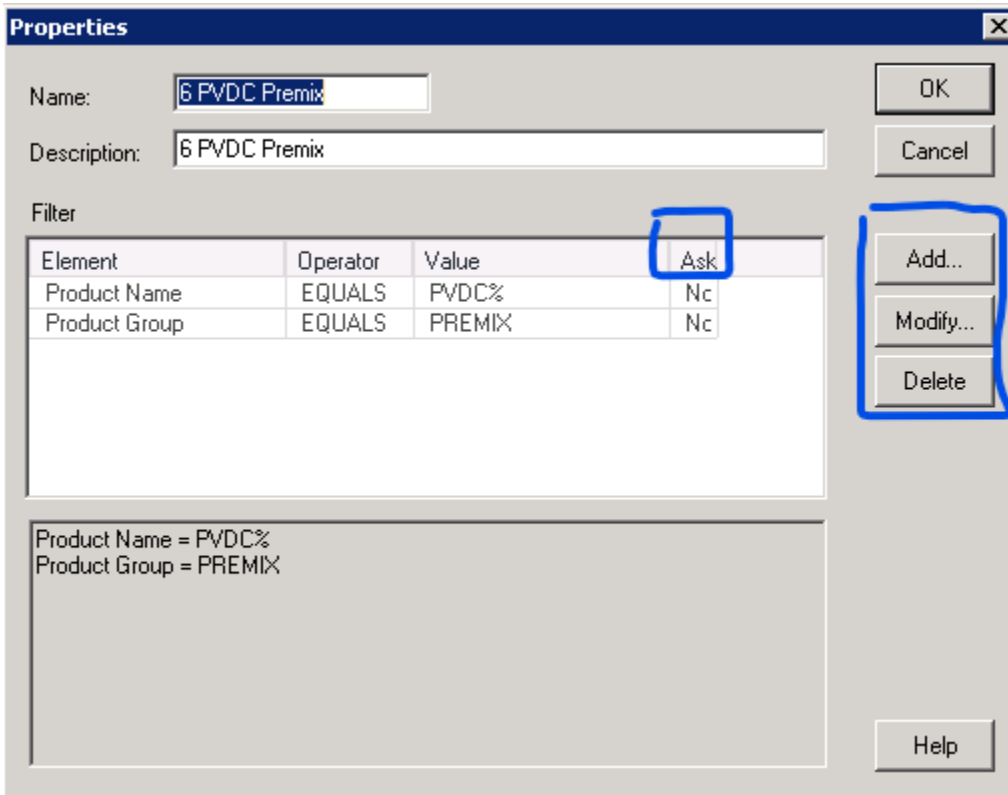


) and/or understand how a grid works by looking at its properties (

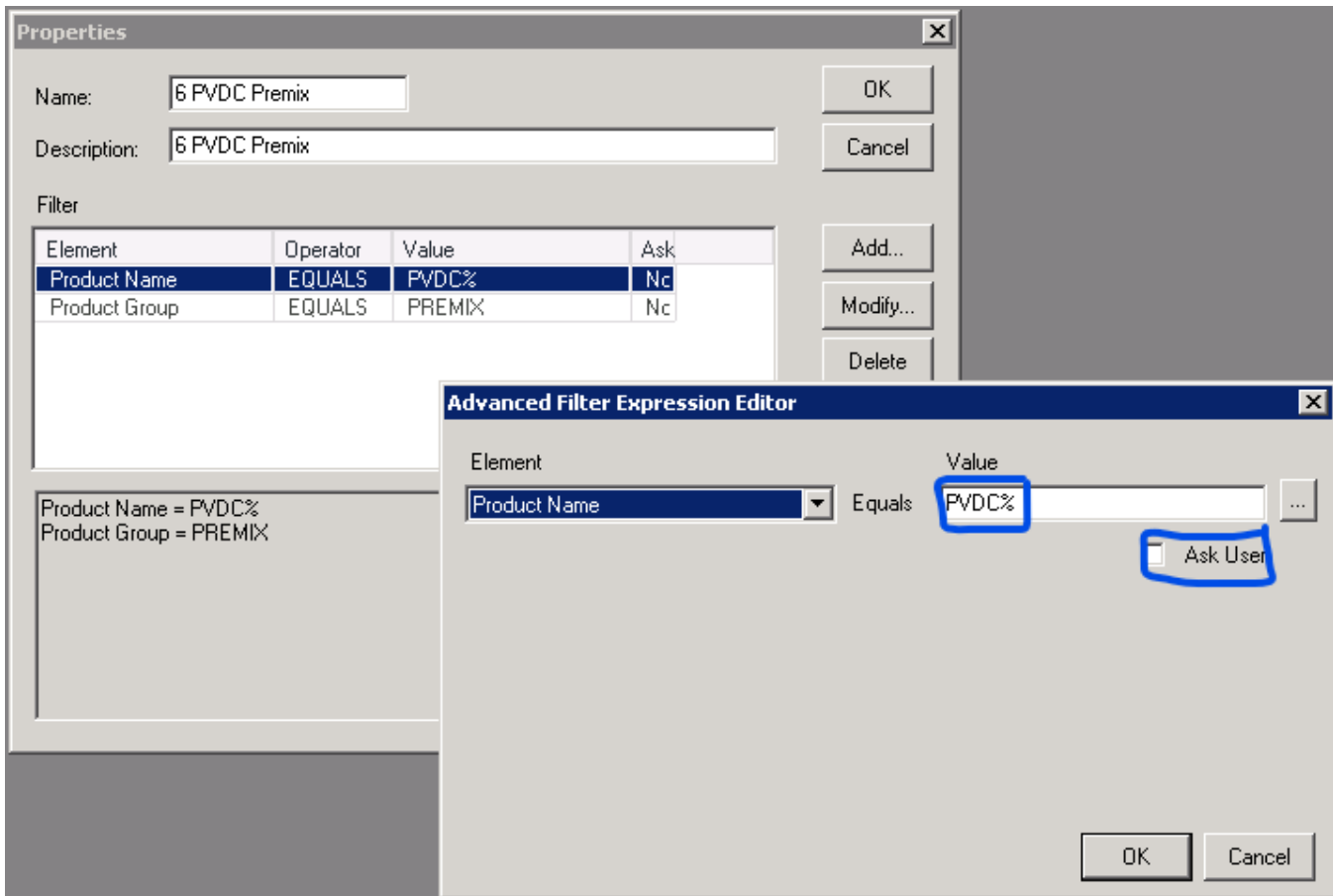
Grids properties:

The grid properties, beside its name and description, is mostly its filters.

You may add, modify, or delete filters, which are really just selection criteria.

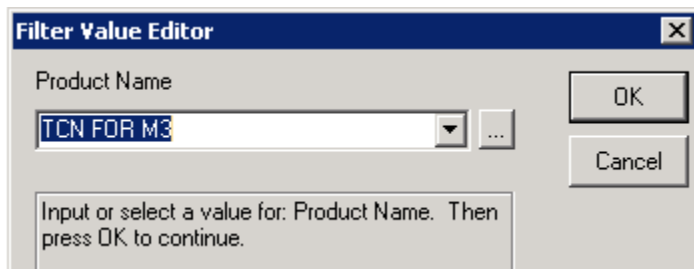


In this example, modifying the first filter (Product Name), shows how it works: this grid selects all products with a 'Product Name' name starting with PVDC. the '%' is a wildcard. (the other filter looks at another product property: product group = 'PREMIX').



Notice the Ask User checkbox; if activated you fill in the value of that filter every time you open the grid: it lets







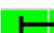

| Element | Operator | Value | Ask |
|---------------|----------|--------|-----|
| Product Name | EQUALS | PVDC% | Ye |
| Product Group | EQUALS | PREMIX | Nc |



Color coding & icons

| E | Prd Name | Pkg | Loc Code | * | 10/24 | 10/31 | 11/07 |
|---|----------------|-----|----------|---|-------|-------|-------|
| | TCNFOR421/UWD | B25 | 9RBC | | | | |
| | TCNFOR531WD | B25 | 9RBC | | | | |
| | TCNFOR532WD | B25 | 9RBC | | | | |
| | TCNFOR5351/UWD | B25 | 9RBC | | | | |
| | TCNFOR60K/UWD | B25 | 9RBC | | | | |
| | TCNFOR65BI/KWD | B25 | 9RBC | | | | |
| | TCNFOR7352WD | B25 | 9RBC | | | | |
| | TCNFOR801HSLX | B25 | 9RBC | | | | |
| | TCNN535WD | B25 | 9RBC | | | | |
| | TCNN60HS | B25 | 9RBC | | | | |
| | TCNN935WD | B25 | 9RBC | | | | |
| | TCNNMWD | B25 | 9RBC | | | | |

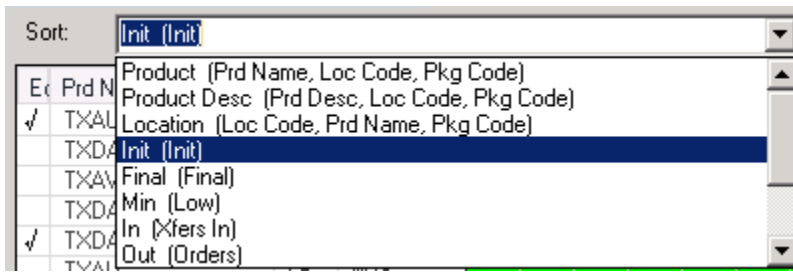
The main screen shows an alert monitor which provides with visual on the projected stock situation:

| Icon / Color | |
|---|---|
|  | projected inventory negative |
|  | projected inventory positive, but lower than safety stock |
|  | projected inventory above safety stock, and below high target (= OK zone) |
|  | projected inventory above high target (=excess) |
|  | upper left black triangle shows a spot receipt (inbound stock transfer, or purchase) |
|  | lower left black triangle shows a spot requirement (outbound stock transfer, or sales order) |
|  | black solid line shows a continuous receipt (production) |
|  | red solid line shows a continuous requirement (consumption) |

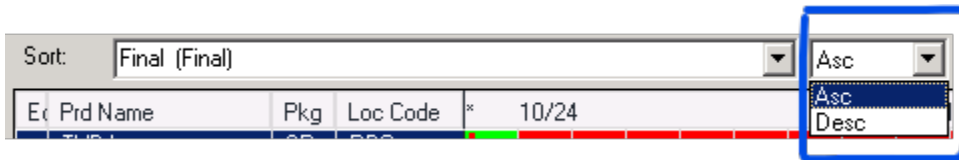
Sorting

Sort items by:

| Sort name | Sort by |
|---------------------|---|
| Product | Product Name / Location code / Package Code |
| Product Description | Prod Description / Location code / Package code |
| Locaiton | Location Code / Prod Name / Package Code |
| Init | Final inventory (see Stats) |
| Min | Min inventory (see Stats) |
| In | Xfers in (see Stats) |
| Out | Orders (see Stats) |
| Forecast | (see Stats) |
| Production | (see Stats) |
| Consumption | (see Stats) |



Each sort can be either ascending or descending.



Stats

Stats shows the key metrics that characterize the situation of a product/location over the horizon defined by the grid.

| Ex | Prd Name | Pkg | Loc Code | Init | Xfers In | Backord In | Orders | Backords | Uncons. Fc | Prod | Prod WIP | Cons | Cons WIP | Final | Low |
|----|----------|-----|----------|------|----------|------------|--------|----------|------------|------|----------|------|----------|-------|-----|
| | TXDA | SP | RBO | 0 | 0 | 0 | 0 | 1 | 0 | 0 | 0 | 0 | 0 | 1 | |
| | TXAV | SP | RBO | 0 | 0 | 0 | 0 | 1 | 0 | 0 | 0 | 0 | 0 | 1 | |
| ✓ | TXAU | LB | CZ37 | 0 | 0 | 0 | 0 | 0 | 0 | 0 | 0 | -0 | -0 | 0 | 0 |
| | TXDA | SP | 6134 | 0 | 0 | 0 | 0 | 0 | 0 | 0 | 0 | -0 | -0 | 0 | 0 |
| ✓ | TXDA | SP | SEM | 1 | 0 | 0 | 0 | 0 | 0 | 0 | 0 | -0 | -0 | 1 | 1 |
| | TXAU | LB | MJS | 1 | 0 | 0 | 0 | 0 | 0 | 0 | 0 | -0 | -0 | 1 | 1 |
| ✓ | TXAU | S5 | 8HBN | 6 | 0 | 0 | 0 | 0 | 0 | 0 | 0 | -0 | -0 | 6 | 6 |
| ✓ | TXAU | S5 | AUA | 53 | 0 | 0 | 12 | 16 | 12 | 0 | 0 | -0 | -0 | 13 | 13 |
| ✓ | TXAV | SP | AUA | 95 | 0 | 1 | 0 | 0 | 0 | 0 | 0 | 28 | -0 | 68 | 68 |
| ✓ | TXAU | S5 | CZ37 | 104 | 34 | 0 | 0 | 0 | 0 | 0 | 0 | 15 | -0 | 119 | 92 |
| ✓ | TXDA | SP | AUA | 587 | 0 | 1 | 0 | 0 | 0 | 0 | 0 | 110 | -0 | 478 | 478 |

| | |
|------------|---|
| Init | Starting inventory |
| Xfers In | Total inbound stock transfer volume over the grid's time span |
| Backord In | Total overdue inbound stock transfer volume |
| Orders | Total outbound volume over the grid's time span |
| Backords | Total overdue outbound volume |
| Final | Inventory at the end of the grid's horizon |
| Low | Lowest inventory point over the grid's time span |

The period of analysis can be found on the bottom of the Stats screen:

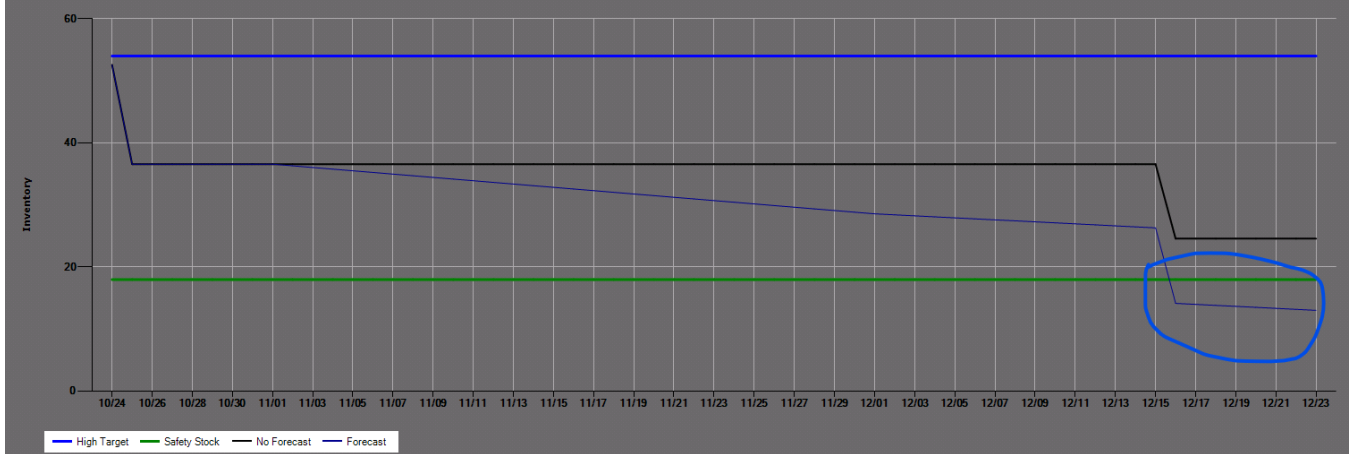
| Grid | | Stats | | By Month | | | | |
|--|----------|-------|----------|----------|----------|------------|--------|---|
| Sort: Product (Prd Name, Loc Code, Pkg Code) Asc | | | | | | | | |
| Ex | Prd Name | Pkg | Loc Code | Init | Xfers In | Backord In | Orders | B |
| ✓ | TXAU | S5 | 8HBN | 6 | 0 | 0 | 0 | |
| ✓ | TXAU | S5 | AUA | 53 | 0 | 0 | 12 | |
| ✓ | TXAU | LB | CZ37 | 0 | 0 | 0 | 0 | |
| ✓ | TXAU | S5 | CZ37 | 104 | 34 | 0 | 0 | |
| | TXAU | LB | MJS | 1 | 0 | 0 | 0 | |
| ✓ | TXAV | SP | AUA | 95 | 0 | 1 | 0 | |
| | TXAV | SP | RBO | 0 | 0 | 0 | 0 | |
| | TXDA | SP | 6134 | 0 | 0 | 0 | 0 | |
| ✓ | TXDA | SP | AUA | 587 | 0 | 1 | 0 | |
| | TXDA | SP | RBO | 0 | 0 | 0 | 0 | |
| ✓ | TXDA | SP | SEM | 1 | 0 | 0 | 0 | |

11 SKUs in Grid

10/24/2022 to 12/22/2022

If a product/location hits an alert threshold over the time span of the grid, the most critical one is the one that shows on that screen.

Example, TXAU / S5 in AUA goes lower than safety stock towards the end of the horizon, and this is why it shows in yellow.



Months

Finally, the 'By Month' screen lets you show all stats by Month instead of over the entire period. The possible stats are on the bottom of that screen.

Careful with the period shown: the grid horizon spans from Oct 24 2022 through Dec 22 2022. This is what this summary shows too. It will not pull in any data outside of that period.


| Grid | | Stats | | By Month | | | | | | | | | | | |
|--|----------|-------|----------|----------|-------|-------|-------|-------|-------|-------|-------|-------|-------|-------|-------|
| Sort: Product (Prd Name, Loc Code, Pkg Code) | | | | Asc | | | | | | | | | | | |
| Et | Prd Name | Pkg | Loc Code | 10/22 | 11/22 | 12/22 | 01/23 | 02/23 | 03/23 | 04/23 | 05/23 | 06/23 | 07/23 | 08/23 | 09/23 |
| ✓ | TXAU | S5 | 8HBN | 0 | 0 | 0 | 0 | 0 | 0 | 0 | 0 | 0 | 0 | 0 | 0 |
| ✓ | TXAU | S5 | AUA | 0 | 0 | 0 | 0 | 0 | 0 | 0 | 0 | 0 | 0 | 0 | 0 |
| ✓ | TXAU | LB | CZ37 | 0 | 0 | 0 | 0 | 0 | 0 | 0 | 0 | 0 | 0 | 0 | 0 |
| ✓ | TXAU | S5 | CZ37 | 0 | 0 | 0 | 0 | 0 | 0 | 0 | 0 | 0 | 0 | 0 | 0 |
| | TXAU | LB | MJS | 0 | 0 | 0 | 0 | 0 | 0 | 0 | 0 | 0 | 0 | 0 | 0 |
| ✓ | TXAV | SP | AUA | 0 | 0 | 0 | 0 | 0 | 0 | 0 | 0 | 0 | 0 | 0 | 0 |
| | TXAV | SP | RBO | -1 | -1 | -1 | 0 | 0 | 0 | 0 | 0 | 0 | 0 | 0 | 0 |
| | TXDA | SP | 6134 | 0 | 0 | 0 | 0 | 0 | 0 | 0 | 0 | 0 | 0 | 0 | 0 |
| ✓ | TXDA | SP | AUA | 0 | 0 | 0 | 0 | 0 | 0 | 0 | 0 | 0 | 0 | 0 | 0 |
| | TXDA | SP | RBO | -1 | -1 | -1 | 0 | 0 | 0 | 0 | 0 | 0 | 0 | 0 | 0 |
| ✓ | TXDA | SP | SEM | 0 | 0 | 0 | 0 | 0 | 0 | 0 | 0 | 0 | 0 | 0 | 0 |


11 SKUs in Grid Low Inv 10/24/2022 to 12/22/2022 Compare

- Initial Inv
- Final Inv
- Low Inv
- Max Inv
- Required


In this example, it shows the lowest inventory point of each month.

With or without forecast

This icon () non-ironically showing a crystal ball, lets you switch the forecast on or off. It affects what the grids tell you. Just hit the icon to switch it on or off.

with forecast (icon is blue )

| Sort: Product (Prd Name, Loc Code, Pkg Code) | | | | Asc | | | | | | | | | | | | | |
|--|----------|----------|-----|------|-------|-------|-------|-------|-------|-------|-------|-------|-------|-------|-------|-------|----|
| Et | SKU Resp | Prd Name | Pkg | Loc | 10/24 | 11/07 | 11/21 | 12/05 | 12/19 | 01/02 | 01/16 | 01/30 | 02/13 | 02/27 | 03/13 | 03/27 | 04 |
| | MTO | TMCP | BJ | CZ37 | | | | | | | | | | | | | |
| ✓ | | TMDH | BJ | 8HBN | | | | | | | | | | | | | |
| | | TMDH | BJ | AIS | | | | | | | | | | | | | |
| ✓ | MTO | TMDH | BJ | CZ37 | | | | | | | | | | | | | |
| ✓ | MTO | TMDY | BJ | CZ37 | | | | | | | | | | | | | |
| | MTO | TME2 | BJ | CZ37 | | | | | | | | | | | | | |
| ✓ | MTO | TME3 | BJ | CZ37 | | | | | | | | | | | | | |

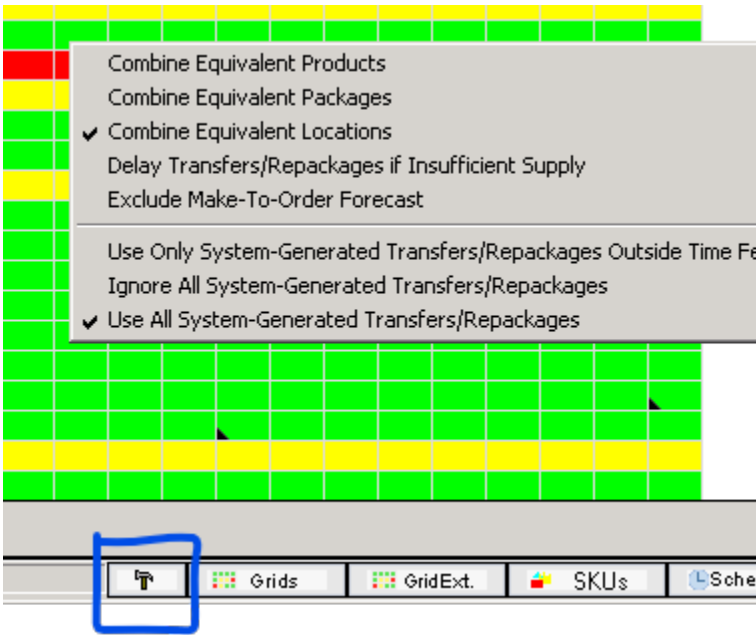
without forecast (icon is greyed out )

| Ec | SKU Resp | Prd Name | Pkg | Loc | 10/24 | 11/07 | 11/21 | 12/05 | 12/19 | 01/02 | 01/16 | 01/30 | 02/13 | 02/27 | 03/13 | 03/27 | 04, |
|----|----------|----------|-----|------|-------|-------|-------|-------|-------|-------|-------|-------|-------|-------|-------|-------|-----|
| | MTO | TMCP | BJ | CZ37 | | | | | | | | | | | | | |
| ✓ | | TMDH | BJ | 8HBR | | | | | | | | | | | | | |
| | | TMDH | BJ | AIS | | | | | | | | | | | | | |
| ✓ | MTO | TMDH | BJ | CZ37 | | | | | | | | | | | | | |
| ✓ | MTO | TMDY | BJ | CZ37 | | | | | | | | | | | | | |
| | MTO | TME2 | BJ | CZ37 | | | | | | | | | | | | | |
| ✓ | MTO | TME3 | BJ | CZ37 | | | | | | | | | | | | | |

TME3 in CZ37 has forecast. It shows that when forecast is activated, inventory is globally in the green zone. When forecast is deactivated, it shows excess inventory.

Hammer settings

Hit the bottom right hand key that looks like a vintage hammer (hence, its name):



It lets you pick amongst the following configurations:

| Config | What it does |
|---------------------------------------|---|
| Combine Equivalent Products | The grids shows equivalent products as one single product (=aggregates inventory, receipts and requirements over one product) |
| Combine Equivalent Packages | Same with package codes of a product |
| Combine Equivalent Locations | The grids shows merged locations as one (everything on the parent location) |
| Use Only System-Generated Transfers | DRP Records factored in in the Grid, however only outside of the Time Fence (for more on Time Fences, check out the Inventory Targets and Preference section) |
| Ignore All System-Generated Transfers | DRP Records not factored in at all |
| Use All System-Generated Transfers | DRP Records factored in. |

Change your horizon

Change the Grid horizon with a right click anywhere on the screen. Select Grid Properties.

| | | | | | | | | |
|---|------|----|------|--|--|--|--|--|
| ✓ | TFA9 | CX | AUA | | | | | |
| | TFA9 | CX | BLT | | | | | |
| ✓ | TFA9 | CX | SEM | | | | | |
| | TFAM | CX | 8HBN | | | | | |
| | TFAM | | | | | | | |
| | TFAM | | | | | | | |
| | TFAM | | | | | | | |
| | TFAM | | | | | | | |
| ✓ | TFAM | | | | | | | |
| | TFAM | | | | | | | |
| | TFAM | | | | | | | |
| | TFAX | | | | | | | |
| ✓ | TFAX | | | | | | | |
| | TFAX | | | | | | | |
| | TFAX | | | | | | | |

- Sku Detail Window
- Sync SKU MultiView
- Related Grid
- Grid Properties**
- Edit Outbound DRP
- Edit Inbound DRP
- Recommended Stock Transfers

Edit Grid Properties [X]

Scaling:

Interval Width (pixels): [↑] [↓]

Scale To Fit Window

Horizon:

Starting Date: 10 / 24 / 2022

Standard: 30 days [▼]

Custom: [↑] [↓]

OK

Cancel

this is the number of days (here: 60) the Grid shows. You may change it up to 330 days:

| Ei Prd Name | Pkg | Loc | 10/24 | 11/07 | 11/21 | 12/05 | 12/19 | 01/02 | 01/16 | 01/30 | 02/13 | 02/27 | 03/13 | 03/27 | 04/10 | 04/24 | 05/08 | 05/22 | 06/05 | 06/19 | 07/03 | 07/17 | 07/31 |
|-------------|-----|-----|-------|-------|-------|-------|-------|-------|-------|-------|-------|-------|-------|-------|-------|-------|-------|-------|-------|-------|-------|-------|-------|
| ✓ TFD03 | BJ | AUA | | | | | | | | | | | | | | | | | | | | | |
| ✓ TFD03 | BJ | BLT | | | | | | | | | | | | | | | | | | | | | |
| ✓ TFD04 | BJ | AUA | | | | | | | | | | | | | | | | | | | | | |
| TFA2 | BJ | 8HR | | | | | | | | | | | | | | | | | | | | | |
| TFA2 | BJ | S06 | | | | | | | | | | | | | | | | | | | | | |
| TFA2 | BJ | AGS | | | | | | | | | | | | | | | | | | | | | |
| ✓ TFA2 | BJ | AUA | | | | | | | | | | | | | | | | | | | | | |
| ✓ TFA9 | CX | 8HR | | | | | | | | | | | | | | | | | | | | | |
| TFA9 | CX | S06 | | | | | | | | | | | | | | | | | | | | | |

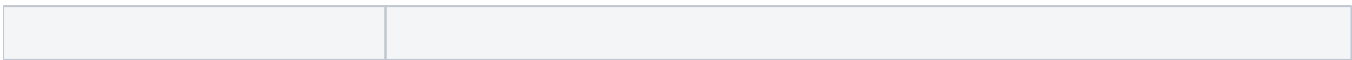
This config applies to **your user only**; it also applies to **all grids**.

Related grid

Related Grid lets you check out the grid of the product you right click on:

| | | | | | | | | | | | | | | | | | | | | | | | |
|---|-------------|----|------|--|--|--|--|--|--|--|--|--|--|--|--|--|--|--|--|--|--|--|--|
| | TXJB | BJ | 9014 | | | | | | | | | | | | | | | | | | | | |
| ✓ | TXJB | | | | | | | | | | | | | | | | | | | | | | |
| ✓ | TXJB | | | | | | | | | | | | | | | | | | | | | | |
| ✓ | TXKM | | | | | | | | | | | | | | | | | | | | | | |
| | TXKM | | | | | | | | | | | | | | | | | | | | | | |
| | TXKM | | | | | | | | | | | | | | | | | | | | | | |
| ✓ | TXKM | | | | | | | | | | | | | | | | | | | | | | |
| ✓ | TXKN | | | | | | | | | | | | | | | | | | | | | | |
| ✓ | TXKP | | | | | | | | | | | | | | | | | | | | | | |
| | TXKR | | | | | | | | | | | | | | | | | | | | | | |
| ✓ | TXKR | | | | | | | | | | | | | | | | | | | | | | |
| ✓ | TXKR | | | | | | | | | | | | | | | | | | | | | | |

- Sku Detail Window
- Sync SKU MultiView
- Related Grid**
 - By Product
 - By Location
- Grid Properties
- Edit Outbound DRP
- Edit Inbound DRP
- Recommended Stock Transfers



| By Product: all locations for that product | | | | | | | |
|--|----------|-----|------|---------|---------|---------|---------|
| Eq | Prd Name | Pkg | Loc | *10/24 | 11/07 | 11/21 | 12/05 |
| | TXJB | BJ | 9014 | [Green] | [Green] | [Green] | [Green] |
| ✓ | TXJB | BJ | AUA | [Green] | [Green] | [Green] | [Green] |
| ✓ | TXJB | BJ | CZ37 | [Green] | [Green] | [Green] | [Green] |

| By Location: all products for that location | | | | | | | |
|---|----------------|-----|------|---------|----------|----------|----------|
| Eq | Prd Name | Pkg | Loc | *10/24 | 11/07 | 11/21 | 12/05 |
| | ALG D 3511F | IB4 | 9014 | [Green] | [Green] | [Green] | [Green] |
| | FLK A 10-P | D3C | 9014 | [Green] | [Green] | [Green] | [Green] |
| | FLK E 10/H | OW | 9014 | [Green] | [Green] | [Green] | [Green] |
| | FLK P56PU5060 | DS2 | 9014 | [Green] | [Green] | [Green] | [Green] |
| | FLK P56PU5060 | OW | 9014 | [Green] | [Green] | [Green] | [Green] |
| | FOMB DA 305 | C3 | 9014 | [Green] | [Red] | [Red] | [Red] |
| | FOMB LC 200 | C3 | 9014 | [Green] | [Green] | [Green] | [Green] |
| | FOMB M 25 | C10 | 9014 | [Green] | [Green] | [Green] | [Green] |
| | FOMB Y 04 | C10 | 9014 | [Green] | [Red] | [Red] | [Red] |
| ✓ | FOMB Y 04 | C3 | 9014 | [Green] | [Green] | [Green] | [Green] |
| | FOMB Y 25 | C10 | 9014 | [Green] | [Green] | [Green] | [Green] |
| | FOMB Y 25 | C3 | 9014 | [Green] | [Red] | [Red] | [Red] |
| | FOMB Y 45 | OW | 9014 | [Green] | [Green] | [Green] | [Green] |
| | FOMB Y LOX 120 | C3 | 9014 | [Green] | [Green] | [Green] | [Green] |
| | FOMB Y LOX 120 | D65 | 9014 | [Green] | [Red] | [Red] | [Red] |
| | FOMB YLVAC25/6 | C3 | 9014 | [Green] | [Green] | [Green] | [Green] |
| | FOMB YPL1500 | C3 | 9014 | [Green] | [Green] | [Green] | [Green] |
| | GLD D 02 | C3 | 9014 | [Green] | [Green] | [Green] | [Green] |
| | GLD DET (SV80) | C3 | 9014 | [Green] | [Green] | [Green] | [Green] |
| | GLD HT 110 | C3 | 9014 | [Green] | [Green] | [Green] | [Green] |
| | GLD HT 135 | C3 | 9014 | [Green] | [Green] | [Green] | [Green] |
| | GLD HT 55 | C3 | 9014 | [Green] | [Green] | [Green] | [Green] |
| | GLD SV 70 | C10 | 9014 | [Green] | [Green] | [Green] | [Green] |
| | GLD SV 80 | C3 | 9014 | [Green] | [Green] | [Green] | [Green] |
| | HAL6014 | DB | 9014 | [Green] | [Yellow] | [Yellow] | [Yellow] |
| | HAL6614 | DB | 9014 | [Green] | [Green] | [Green] | [Green] |
| | HALAR 350 LC | OW | 9014 | [Green] | [Green] | [Green] | [Green] |
| | HALAR 6014 | OW | 9014 | [Green] | [Green] | [Green] | [Green] |
| | HALAR 6614 | OW | 9014 | [Green] | [Green] | [Green] | [Green] |
| | HALXPH832 | DI | 9014 | [Green] | [Green] | [Green] | [Green] |

Column layout:

Right click on the column header of the grid; it lets you pick additional columns for display:

| Eq | Prd Name | |
|----|----------|------------|
| | TMCP | ✓ Equip |
| ✓ | TMDH | ✓ Prd Name |
| | TMDH | Prd Srch |
| ✓ | TMDH | Prd Class |
| ✓ | TMDY | Prd Desc |
| | TME2 | Pkg Nome |
| ✓ | TME3 | ✓ Pkg Code |
| | TME6 | Pkg Short |
| | TMRS | ✓ Loc Code |
| ✓ | TMRS | Loc Desc |
| | TMRT | SKU Resp |
| | TMRT | SKU Code |
| ✓ | TMRU | SKU Desc |
| | TX02 | Units |
| ✓ | TX02 | Custom A |
| | TXJB | |

Tips: the 'SKU Resp' tells you if a product is defined as MTS or MTO (defined in [Inventory Targets and Preferences](#)):

| Ec | SKU Resp | Prd Name | Pkg | Loc |
|----|----------|----------|-----|------|
| | MTO | TMCP | BJ | CZ37 |
| ✓ | | TMDH | BJ | 8HBM |
| | | TMDH | BJ | AI5 |
| ✓ | MTO | TMDH | BJ | CZ37 |
| ✓ | MTO | TMDY | BJ | CZ37 |
| | MTO | TME2 | BJ | CZ37 |
| ✓ | MTO | TME3 | BJ | CZ37 |
| | | TME6 | BJ | 8HBM |
| | | TMRS | BJ | 8HBM |

Product / Location specific supply / demand data

(aka: SKU Details)

A right click on a product/location takes you to the detailed screen that lets you analyze the situation of said product / location.

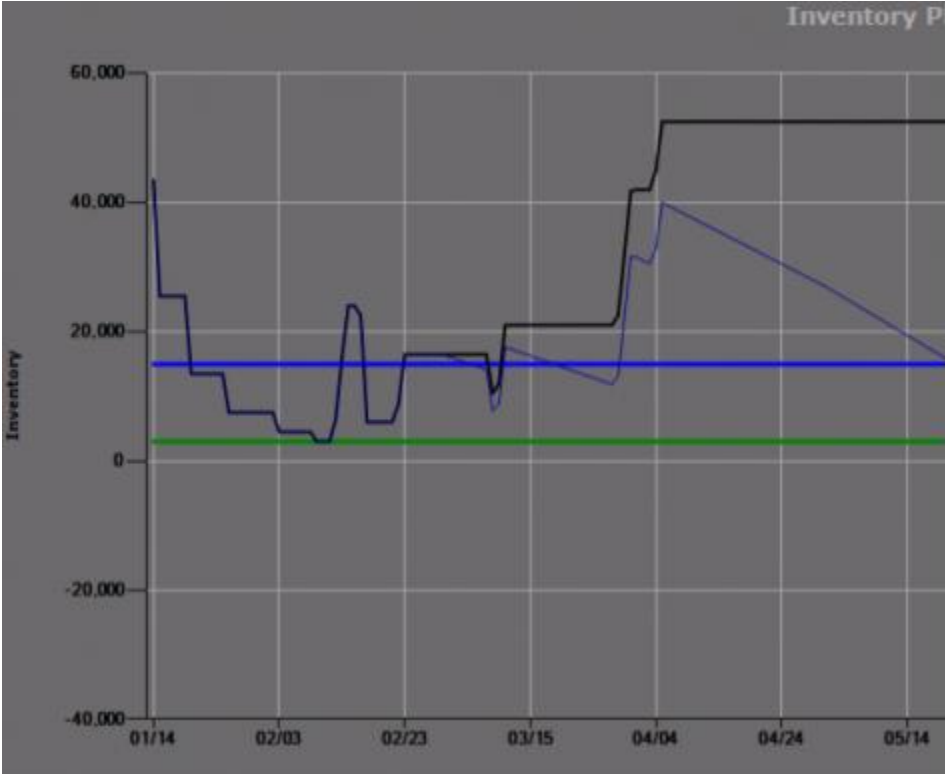
| | | | | | | | | | | | | |
|------|---------|------|--------|----------|------------|----------|------------|-----|-------|---------|------------|---------|
| Plot | Summary | Lots | Orders | Forecast | Remaing FC | Fc v Ord | Production | WIP | Equiv | General | Inv Target | TgtPlot |
|------|---------|------|--------|----------|------------|----------|------------|-----|-------|---------|------------|---------|

Plot

A graphical view of the projected inventory.

Legend:

— High Target
 — Safety Stock
 — No Forecast
 — Forecast



Summary

A monthly breakdown of the in- and outwards movements, with resulting EoM inventory and Days of Sale.

| Plot | Summary | Lots | Orders | Forecast | Remaing FC | Fc v Ord | Production | WIP | Equiv | General | Inv Target | TgPlot |
|------|-----------------------------------|-----------|--------|----------|----------------------|----------|----------------------|----------------------|----------------------|---------|----------------------|--------------|
| | | | | | 1/26/2022-10/31/2022 | | 1/01/2022-11/30/2022 | 1/01/2022-12/31/2022 | 1/01/2023-01/31/2023 | | 1/01/2023-02/28/2023 | |
| | Inventory On 10/26/2022 | 10 | | | | | | | | | | |
| | - Unreported production | 0 | | | | | | | | | | |
| | - Unreported consumption | 0 | | | | | | | | | | |
| | - Past due transfers out | 0 | | | | | | | | | | |
| | + Past due transfers in | 0 | | | | | | | | | | |
| | - Past due customer orders | 0 | | | | | | | | | | |
| | Opening Inventory Position | 10 | | | -2 | | -8 | | 3 | | -1 | |
| | Purchases | | | | 0 | | 0 | | 0 | | 0 | 0 |
| | Intercompany | | | | 0 | | 8 | | 0 | | 0 | 0 |
| | Stock Transfers | | | | 0 | | 8 | | 0 | | 0 | 0 |
| | SAP Transport Orders | | | | 0 | | 0 | | 0 | | 0 | 0 |
| | Picaso Recommended | | | | 0 | | 0 | | 0 | | 0 | 0 |
| | Consignment Fillups | | | | 0 | | 0 | | 0 | | 0 | 0 |
| | SAP Purchase Reqs | | | | 0 | | 0 | | 0 | | 0 | 0 |
| | Permanent Orders | | | | 0 | | 0 | | 0 | | 0 | 0 |
| | SAP Production | | | | 0 | | 0 | | 0 | | 0 | 0 |
| | Production | | | | 0 | | 10 | | 5 | | 15 | 15 |
| | + Total Increase | 0 | | | 0 | | 26 | | 5 | | 15 | 15 |
| | Consumption | | | | -0 | | -0 | | -0 | | -0 | -0 |
| | SAP Customer Orders | | | | 0 | | 18 | | 0 | | 13 | 0 |
| | Intercompany | | | | 12 | | 5 | | 0 | | 0 | 5 |
| | Stock Transfers | | | | 0 | | 8 | | 0 | | 0 | 0 |
| | SAP Transport Orders | | | | 0 | | 0 | | 0 | | 0 | 0 |
| | Picaso Recommended | | | | 0 | | 0 | | 0 | | 0 | 0 |
| | Consignment Fillups | | | | 0 | | 0 | | 0 | | 0 | 0 |
| | SAP Purchase Reqs | | | | 0 | | 0 | | 0 | | 0 | 0 |
| | Permanent Orders | | | | 0 | | 0 | | 0 | | 0 | 0 |
| | SAP Consumption | | | | 0 | | 0 | | 0 | | 0 | 0 |
| | Forecast remaining | | | | 0 | | 0 | | 0 | | 0 | 20 |
| | - Total Decrease | 12 | | | 32 | | 0 | | 13 | | 25 | 25 |
| | - Closing Inventory | -2 | | | -8 | | -3 | | -1 | | -11 | -11 |
| | Days of Sale | | | | -2.9 | | 3999.0 | | -6.6 | | -1.1 | -25.7 |

Lots

On hand inventory, broken down by lot.

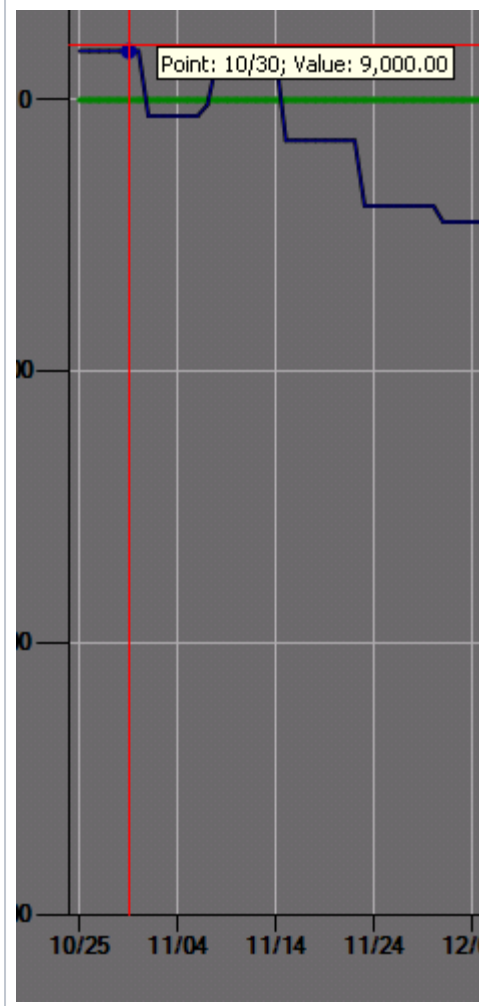
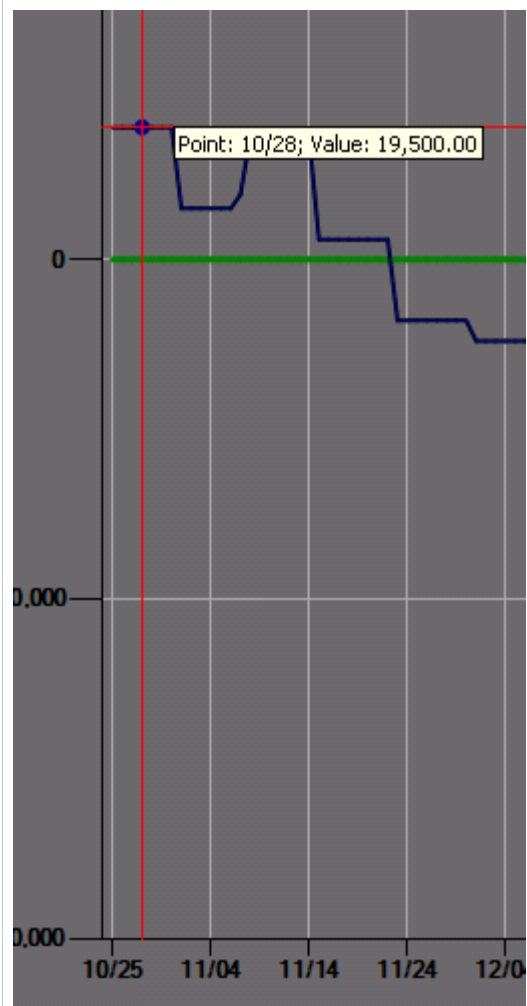
| Plot | Summary | Lots | Orders | Forecast | Remaing FC | Fc v Ord | Production | WIP | Equiv | General | Inv Target | TgPlot | | | | | | | | |
|----------|---------|---------|---------|----------|------------|----------|------------|-----|--------------------------------|---------|------------|-------------------------------------|--------------------------|---------------|-----|-------------|------|--------|------|-------|
| Location | Package | Product | Lot # | Car # | Blot | Status | Qty | TJ | Desc | Ship | Ship Date | Use | New | Date Produced | Lot | Lot Field 2 | Perm | SKU | SKU | Prod |
| 6006 | IB4 | ALG C | 5PP 219 | NONE2964 | | | 9000.00 | A | >1/ THE USAGE DECISION WAS MAD | | 10/25/2022 | <input checked="" type="checkbox"/> | <input type="checkbox"/> | 10/07/2022 | A0 | A0 | 0 | 018304 | ALGO | ALG C |
| 6006 | IB4 | ALG C | 5PP 221 | NONE1011 | | | 10500.00 | A | >1/ THE USAGE DECISION WAS MAD | | 10/25/2022 | <input checked="" type="checkbox"/> | <input type="checkbox"/> | 10/10/2022 | A0 | A0 | 0 | 018304 | ALGO | ALG C |

The 'Used' field indicates whether the lot goes to your available inventory. Here, it shows that both lots are considered available.

It is determined automatically based on the UD code and the stock status of each lot in SAP:

| UD | Stock status | Usage |
|---------------------|-----------------------|-----------------|
| A* | Unrestricted | 1 (available) |
| R* | * | 0 (unavailable) |
| * | Blocked or Restricted | 0 (unavailable) |
| blank (still in QC) | * | 1 (available) |

You may modify the value of that field. A double click on a lot gets you to a window where you can switch the checkbox on or off:



The 'used' field will be overwritten overnight.

Inbound and Outbound orders

| Arrived | Trans | Order # | Avail | Cust Name | Cust Code | Entry | Loc | Order | Qty | Reqd | Ship | Ship To |
|------------|-------|-----------------|------------|---------------------|-----------|------------|------|---------|----------|------------|------------|---------|
| 02/09/2021 | 26 | 4513604607-10-1 | 01/14/2021 | KATOEN NATIE EDISON | 2100875 | 10/22/2020 | 6006 | | 9000.00 | 01/11/2021 | 01/11/2021 | 53YA |
| 02/09/2021 | 26 | 4513639750-10-1 | 01/14/2021 | KATOEN NATIE EDISON | 2100875 | 12/28/2020 | 6006 | | 6000.00 | 12/31/9999 | 01/11/2021 | 53YA |
| 03/05/2021 | 50 | 4513606586-10-1 | 01/14/2021 | Prithvi | 4202015 | 10/27/2020 | 6006 | | 3000.00 | 12/31/9999 | 01/12/2021 | 9014 |
| 03/09/2021 | 49 | 4513615933-10-1 | 01/14/2021 | KOREA SOLE&S | 9006 | 11/12/2020 | 6006 | | 12000.00 | 12/31/9999 | 01/19/2021 | 9006 |
| 02/20/2021 | 26 | 4513589132-30-1 | 01/14/2021 | KATOEN NATIE EDISON | 2100875 | 09/23/2020 | 6006 | | 6000.00 | 12/31/9999 | 01/25/2021 | 53YA |
| 02/09/2021 | 7 | 4513615089-20-1 | 01/14/2021 | KOREA SOLE&S | 9006 | 11/11/2020 | 6006 | | 3000.00 | 12/31/9999 | 02/02/2021 | 9006 |
| 03/10/2021 | 35 | +0000293400 | 01/14/2021 | WEST DEPTFORD | 325405 | 01/13/2021 | SMF | | 1500.00 | 02/03/2021 | 02/03/2021 | THF |
| 02/10/2021 | 2 | 5475303-10-1 | 01/14/2021 | DHL LOGISTICS | 100025955 | 11/16/2020 | 6006 | Key Acc | 1500.00 | 02/08/2021 | 02/08/2021 | |

All inbound (inbound stock transfers) and outbound (sales orders and outbound stock transfers). This screen also shows DRP records.

Use these checkboxes to filter in or out what you want to see.

Shipped
 Open
 Inbound
 Outbound

Ignoring an order:

A double click on an order takes you to the details for this order. From there, you may disable it (without deleting it) by switching the 'Ignore Order' box.

Edit Order Definition [X]

Order Number: Contract Number:

[OK] [Cancel]

General

Prd Name:

Pkg Code:

Location Code:

Cust Ship To: ...

Quantity:

Order Status: Supplier Code:

Dates

Requested: Delivery:

Plan Ship:

Avail To Ship: Transit Time:

Notes

User Defined Descriptors:

Reason Code:

Status Desc:

Status Desc 2:

Order Field 1:

Sales Information

Sales Type: Planner:

Lot Number: Cust Serv Rep:

Price: Entry Date:

Transfer Information

Stock Transfer

Ship To Location:

Destination Pkg:

(If different from Pkg Code)

Settings

Included in Forecast Permanent

Ignore Order Allocated

System Generated

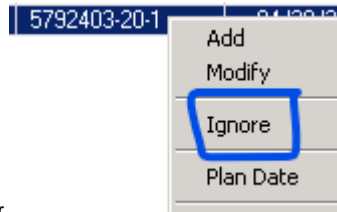
Order Type:

Shipping Preferences

Product:

Package:

Location:



You can also do this with a simple contextual right click on the order

Status of an order

Order Status:

Dates:

Requested:

H: means that the order item has a delivery block (TBC)

Forecast Overview

- From the Picaso forecasting module (real time update)
- Forecast = 1 value per month
- Inv. projection: forecast broken down into daily buckets

| Plot | Summary | Lots | Orders | Forecast | Remaining FC | Fc v Ord | Production | WIP | Equip | General | Inv Target | TgtPlot | | | |
|-------------------|---------|--------|--------|----------|--------------|----------|------------|---------|---------|---------|------------|---------|------------|---------------|--------------------------|
| Aggregate: | | | | | | | | | | | | | | | |
| 1/21 | 2/21 | 3/21 | 4/21 | 5/21 | 6/21 | 7/21 | 8/21 | 9/21 | 10/21 | 11/21 | 12/21 | | | | |
| 1500 | 3000 | 10500 | 15000 | 18000 | 7500 | 7500 | 7500 | 7500 | 7500 | 7500 | 7500 | | | | |
| Location | 01/21 | 02/21 | 03/21 | 04/21 | 05/21 | 06/21 | 07/21 | 08/21 | 09/21 | 10/21 | 11/21 | 12/21 | Cust Fld 4 | Cust Loc Code | Cust Stat Name |
| SMF | 0.00 | 0.00 | 0.00 | 0.00 | 0.00 | 0.00 | 0.00 | 0.00 | 0.00 | 0.00 | 0.00 | 0.00 | 000102914 | 100023277 | CIRON SA |
| SMF | 0.00 | 0.00 | 0.00 | 0.00 | 0.00 | 0.00 | 0.00 | 0.00 | 0.00 | 0.00 | 0.00 | 0.00 | 001120273 | 100024067 | DDP SPECIALTY PRODUCTS G |
| SMF | 0.00 | 0.00 | 0.00 | 100.00 | 3000.00 | 3000.00 | 3000.00 | 3000.00 | 3000.00 | 100.00 | 100.00 | 100.00 | 000461658 | 100001063 | DEKO SRL |
| SMF | 0.00 | 0.00 | 0.00 | 0.00 | 0.00 | 0.00 | 0.00 | 0.00 | 0.00 | 0.00 | 0.00 | 0.00 | | DEVCHN | DEVCHN |
| SMF | 1500.00 | 100.00 | 0.00 | 100.00 | 1500.00 | 1500.00 | 1500.00 | 1500.00 | 1500.00 | 100.00 | 100.00 | 100.00 | 001131396 | 100025955 | DHL LOGISTICS |
| SMF | 0.00 | 0.00 | 100.00 | 0.00 | 0.00 | 0.00 | 0.00 | 0.00 | 0.00 | 0.00 | 0.00 | 0.00 | 004002252 | 100010667 | OKITSUMO PAINT (CHANGSHU |
| SMF | 0.00 | 0.00 | 0.00 | 0.00 | 0.00 | 0.00 | 0.00 | 0.00 | 0.00 | 0.00 | 0.00 | 0.00 | 000462919 | 100005704 | POLIS SRL |
| SMF | 0.00 | 0.00 | 0.00 | 0.00 | 0.00 | 0.00 | 0.00 | 0.00 | 0.00 | 0.00 | 0.00 | 0.00 | 000416397 | 100006966 | SABER S.R.L. |
| SMF | 0.00 | 0.00 | 0.00 | 0.00 | 0.00 | 0.00 | 0.00 | 0.00 | 0.00 | 0.00 | 0.00 | 0.00 | 000155456 | 100002981 | SAFT |
| SMF | 0.00 | 0.00 | 0.00 | 100.00 | 0.00 | 0.00 | 0.00 | 0.00 | 0.00 | 0.00 | 0.00 | 0.00 | 001103173 | 100017724 | VERSEIDAG INDUTEX GMBH |
| SMF | 0.00 | 0.00 | 0.00 | 0.00 | 1500.00 | 0.00 | 0.00 | 0.00 | 0.00 | 0.00 | 0.00 | 0.00 | 000324632 | 100002815 | ZHONGSHAN OKITSUMO CO., |

- Forecast Detail (This Customer/SKU)
- Forecast Detail (This Customer/SKU and Equivs)
- Forecast Detail (This SKU)
- Redirect (This Customer/SKU)

A contextual right click on any line product / customer / location. It also allows you to redirect the forecast.

lets you navigate to the detailed forecast view of the

For more about these two topics, check out the [Demand Management](#) section.

Remaining FC

Monthly forecast, unconsumed by sales orders (open or shipped). Looks at months M0 M2

Forecast is Ignored the last 7 days of the month

| Plot | Summary | Lots | Orders | Forecast | | | Fc v Ord |
|--|---------|------|--------|------------|------------|------------|----------|
| | | | | 10/22 | 11/22 | 12/22 | |
| Forecast Usage | | | | | | | |
| Total Month Forecast | | | | 755 | 731 | 698 | |
| Satisfied from this SKU/Plant | | | | | | | |
| -Open customer orders | | | | 0 | 0 | 0 | |
| -Shipped customer orders | | | | 0 | 0 | 0 | |
| -Backordered | | | | 0 | 0 | 0 | |
| Satisfied from an alternate SKU/Plant | | | | | | | |
| -Open customer orders | | | | 0 | 160 | 400 | |
| -Shipped customer orders | | | | 400 | 0 | 0 | |
| -Backordered | | | | 0 | 0 | 0 | |
| Unconsumed Forecast* | | | | 355 | 571 | 298 | |
| *It is within 7 days of the end of the month so the remaining forecast for current month has been set to zero. | | | | | | | |

| Order # | Reqd | Ship | Qty | Statu | Prd Name | Loc | Pkg | Aff Inv |
|-----------------------|---------|--------|-----|------------|----------|-----|-----|---------|
| 73544142-900/05/2022 | 04/2022 | 20.00 | S | TCN FOR M1 | 6006 | B10 | | |
| 73547993-900/10/2022 | 07/2022 | 200.00 | S | TCN FOR M1 | 6006 | B10 | | |
| 73547993-900/10/2022 | 07/2022 | 50.00 | S | TCN FOR M1 | 6006 | B10 | | |
| 73551568-900/08/2022 | 11/2022 | 100.00 | S | TCN FOR M1 | 6006 | B10 | | |
| 73564607-900/01/2022 | 21/2022 | 30.00 | S | TCN FOR M1 | 6006 | B10 | | |
| 5827420-10-11/18/2022 | 18/2022 | 100.00 | O | TCN FOR M1 | 6006 | B10 | | |
| 5820668-30-11/30/2022 | 30/2022 | 60.00 | O | TCN FOR M1 | 6006 | B10 | | |
| 5835263-10-12/02/2022 | 02/2022 | 250.00 | O | TCN FOR M1 | 6006 | B10 | | |
| 5825656-10-12/05/2022 | 05/2022 | 150.00 | H | TCN FOR M1 | 6006 | B10 | | |
| 5836679-30-11/09/2023 | 09/2023 | 80.00 | H | TCN FOR M1 | 6006 | B10 | | |

FC v Ord

Compares forecast and order for the current month.

| Plot | Summary | Lots | Orders | Forecast | Remaing FC | Fc v Ord | Production | WIP | Equiv | General |
|--------------|--------------------------|------|---------------|----------|-------------|-------------|-------------|---------------|------------|------------|
| Loc Code | Customer | | City | State | MTD Ship | Open Order | Back Order | Outlook | Orig FC | Diff(+/-) |
| 100002412 | CRISTONI LOGISTIQUE | | SEGRE | 49 | 0.00 | 0.00 | 0.00 | 0.00 | 0 | 0 |
| 100001429 | DAETWYLER SCHWEIZ AG | | SCHATTDORF | UR | 0.00 | 0.00 | 0.00 | 100.00 | 80 | -20 |
| 100001750 | GE MAO RUBBER INDUSTRIAL | | CHANGHUA-HSIE | CH | 0.00 | 0.00 | 0.00 | 0.00 | 15 | 15 |
| 100002332 | OLDRATI GUARNIZIONI INDU | | VILLONGO | BG | 0.00 | 0.00 | 0.00 | 20.00 | 20 | 0 |
| 100002121 | PMG SPA | | TRESCORE BALN | BG | 0.00 | 0.00 | 0.00 | 0.00 | 250 | 250 |
| 100011865 | PT. NESINAK INDUSTRIES | | BEKASI | J8 | 0.00 | 0.00 | 0.00 | 30.00 | 0 | -30 |
| 100000736 | RADO GUMMI GMBH | | RADEVORMWALD | 05 | 0.00 | 0.00 | 0.00 | 0.00 | 90 | 90 |
| 100001000 | SKT YEDEK PANCA VE MAKIN | | BUTSA | 10 | 0.00 | 0.00 | 0.00 | 0.00 | 150 | 150 |
| 100000592 | TSF SPA | | ADRO | BS | 0.00 | 0.00 | 0.00 | 250.00 | 100 | -150 |
| 100020369 | PARKER HANNIFIN MANUFACT | | PLEIDEL SHEIM | 08 | 0.00 | 0.00 | 0.00 | 0.00 | 0 | -0 |
| 100005567 | TRELLEBORG SEALING SOLUT | | MARSA | HF | 0.00 | 0.00 | 0.00 | 0.00 | 0 | -0 |
| 100001321 | CONTITECH ELASTOMER- | | NORTHEIM | 03 | 0.00 | 0.00 | 0.00 | 0.00 | 0 | 0 |
| 100011347 | CONTITECH MGW GMBH | | HANN. MUENDEN | 03 | 0.00 | 0.00 | 0.00 | 0.00 | 0 | 0 |
| 100002933 | DEVASHISH POLYMERS PVT L | | DADRA AND NAG | DN | 0.00 | 0.00 | 0.00 | 0.00 | 0 | 0 |
| 100005963 | GREEN EXCEL (SHANGHAI) L | | SHANGHAI | 31 | 0.00 | 0.00 | 0.00 | 0.00 | 0 | 0 |
| 100002930 | GREEN EXCEL (SHANGHAI) L | | SHANGHAI | 31 | 0.00 | 0.00 | 0.00 | 0.00 | 0 | 0 |
| 100002239 | GREEN EXCEL (SHANGHAI) L | | SHANGHAI | 31 | 0.00 | 0.00 | 0.00 | 0.00 | 0 | 0 |
| 100011195 | GREEN EXCEL TECHNOLOGY C | | TADYUAN | TA | 0.00 | 0.00 | 0.00 | 0.00 | 50 | 50 |
| 100028455 | LE JOINT FRANCAIS - HUTC | | SAINT BRIEUC | 22 | 0.00 | 0.00 | 0.00 | 0.00 | 0 | 0 |
| 100014457 | LTE SRL | | COLOGNE | BS | 0.00 | 0.00 | 0.00 | 0.00 | 0 | 0 |
| 100013124 | PMG SPA | | TRESCORE BALN | BG | 0.00 | 0.00 | 0.00 | 0.00 | 0 | 0 |
| 100013309 | PMG SPA | | CENATE SOTTO | BG | 0.00 | 0.00 | 0.00 | 0.00 | 0 | 0 |
| 100000694 | POLYMER-TECHNIK ELBE GMB | | WITTENBERG | 15 | 0.00 | 0.00 | 0.00 | 0.00 | 0 | 0 |
| 100011237 | RHODIA BRASIL SA | | PAULINIA | SP | 0.00 | 0.00 | 0.00 | 0.00 | 0 | 0 |
| 100017816 | RHODIA BRASIL SA | | SÃO BERNARDO | SP | 0.00 | 0.00 | 0.00 | 0.00 | 0 | 0 |
| 100025480 | RIVA BATTERIES GMBH | | BACKNANG | 08 | 0.00 | 0.00 | 0.00 | 0.00 | 0 | 0 |
| 100010125 | SHANGHAI ZHONGMAO RUBBER | | SHANGHAI | 31 | 0.00 | 0.00 | 0.00 | 0.00 | 0 | 0 |
| 100022309 | SOLVAY | | FUJI-SHI | 22 | 0.00 | 0.00 | 0.00 | 0.00 | 0 | 0 |
| TOTAL | | | | | 0.00 | 0.00 | 0.00 | 400.00 | 755 | 355 |

In this example, the forecast is 100 kg, the customer has placed an order for 250 kg (open order, not shipped yet), and the difference is -150 kg.

Production Schedule Overview

- From the Picaso production schedule module (real time update)
- Picaso schedule copied to SAP overnight

| Plot | Summary | Lots | Orders | Forecast | Remaing FC | Fc v Ord | Production | WIP | Equiv | General | Inv Target | TgtPlot |
|------------|----------|------|----------|----------|------------|----------|------------|-----|----------|---------|------------|------------------|
| Date | Time | Unit | Sku Code | Rate | | | Duration | Qty | Package | | | Responsible Prod |
| 02/11/2021 | 15:34:00 | UF | 0193717 | | 9600.00 | | 1.09 | | 10500.00 | IB4 | | ALG D 3511F |
| 02/12/2021 | 17:49:00 | UF | 0193717 | | 9600.00 | | 1.09 | | 10500.00 | IB4 | | ALG D 3511F |
| 02/21/2021 | 17:04:00 | UF | 0193717 | | 9600.00 | | 1.09 | | 10500.00 | IB4 | | ALG D 3511F |
| 03/09/2021 | 20:34:00 | UF | 0193717 | | 9600.00 | | 1.09 | | 10500.00 | IB4 | | ALG D 3511F |
| 03/28/2021 | 20:02:00 | UF | 0193717 | | 9600.00 | | 1.09 | | 10500.00 | IB4 | | ALG D 3511F |
| 03/29/2021 | 22:17:00 | UF | 0193717 | | 9600.00 | | 1.09 | | 10500.00 | IB4 | | ALG D 3511F |
| 04/03/2021 | 16:32:00 | UF | 0193717 | | 9600.00 | | 1.09 | | 10500.00 | IB4 | | ALG D 3511F |

WIP

unused (TBC)

Equivalent

Shows which elements (locations, packages, products) are merged, if relevant.

| Plot | Summary | Lots | Orders | Forecast | Remaing FC | Fc v Ord | Production | WIP | Equiv |
|------------|---------|----------|--------|----------|------------|----------|------------|-----|-------|
| Product | Package | Location | | | | | | | |
| TCN FOR M1 | B10 | 6006 | | | | | | | |
| TCN FOR M1 | B10 | RB86 | | | | | | | |

In this example, RB86 and 6006 are merged locations.

More about material equivalent (and merged packages and locations) [here](#)

General

ID of the product / location. Also tells you


Follow this [link](#) to know more about product class. Follow that [link](#) to know more about location class.

| Plot | Summary | Lots | Orders | Forecast | Remaining FC | Fc v Ord | Production | WIP | Equiv | General | Inv Target | TgtPlot |
|-------------------------|------------|---------------------------------------|----------|----------|--------------|----------|------------|-----|-------|---------|------------|---------|
| Product Detail: | | Package Detail: | | | | | | | | | | |
| Search Code: | 2 | Code: | B10 | | | | | | | | | |
| Manager: | IT91860 | Nome: | PKG MATS | | | | | | | | | |
| Class: | P | Sku Code: | 0171129 | | | | | | | | | |
| Nome Code: | TCN FOR M1 | | | | | | | | | | | |
| Location Detail: | | Inventory Summary and Targets: | | | | | | | | | | |
| Code: | SMF | Current: | 3080.00 | | | | | | | | | |
| Description: | SPINETTA | Safety Stock: | 1000 | | | | | | | | | |
| Type: | P | High Target: | 2000 | | | | | | | | | |

Inventory Target

Lets you:

- know what is the forecast error
- know what is the current Safety stock and corresponding service level.
- set a high target and a safety stock (doing this updates ADM)
- know what is the suggested safety stock based on a given service level
- set a minimum order quantity, which drives how DRP works.
- know what is the total target, which is the expected average inventory level

When you hit the save button () , it updates ADM.

| | Value | Units |
|--|-----------|-------|
| Average Monthly Demand | | |
| Direct Sales | 5,000.00 | KG |
| + Stock Transfers | 18,500.00 | KG |
| + Consumption | 10.00 | KG |
| = Total Average Demand | 23,510.00 | KG |
| Forecast Error (Standard Deviation) | 1,349.27 | |
| Service & Target Information | | |
| Current Safety Stock | 3,000.00 | KG |
| Current Service Level | 1.00 | |
| High Target Inventory * | 15,000.00 | KG |
| What-if Safety Stock * | -1,587.83 | KG |
| What-if Service Level * | 0.93 | |
| Replenishment Rules | | |
| Minimum Reorder Qty * | 10,500.00 | KG |
| When the inventory reaches | -1,587.83 | KG |
| It will be produced on UF with a cycle time of | 30 | Days |
| Predicted Average Inventory Levels | | |
| Cycle Inventory | 10,653.84 | KG |
| + Safety Inventory | -1,587.83 | KG |
| + Transit Inventory | 0.00 | KG |
| + Test Inventory | 9,268.83 | KG |
| + Process Inventory | 0.00 | KG |
| + Pkg Lag Inventory | 0.00 | KG |
| = Total Target | 18,334.84 | KG |

* Values committed to database on save (in yellow)

Forecast error

Current safety stock and service level

High target

High target

Min Reorder Qty

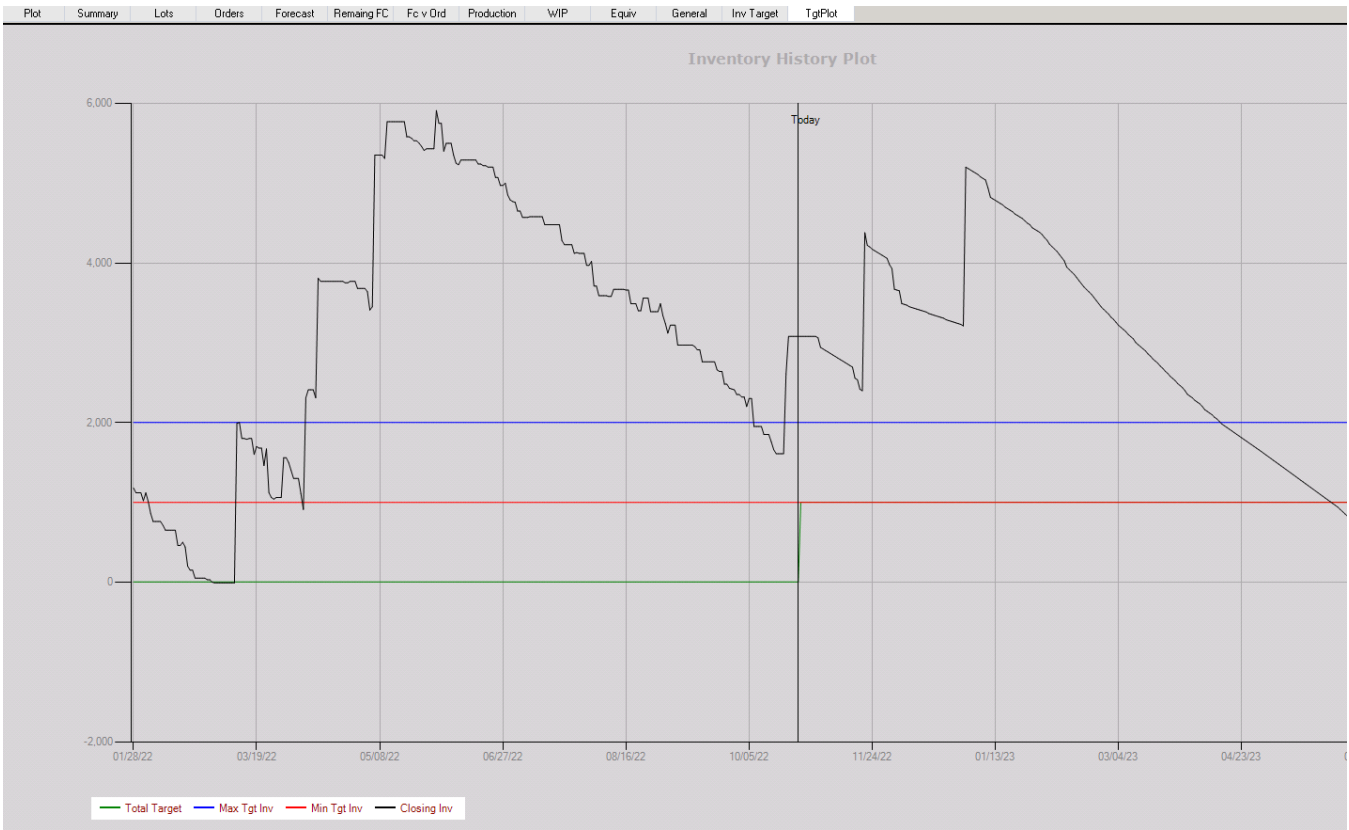
Total Target

More about [Inventory targeting](#),

TargetPlot

Historical inventory level, goes back 9 months.

Also shows variations of safety stock and high target settings.



Distribution Requirement Planning

automated generation of a distribution plan