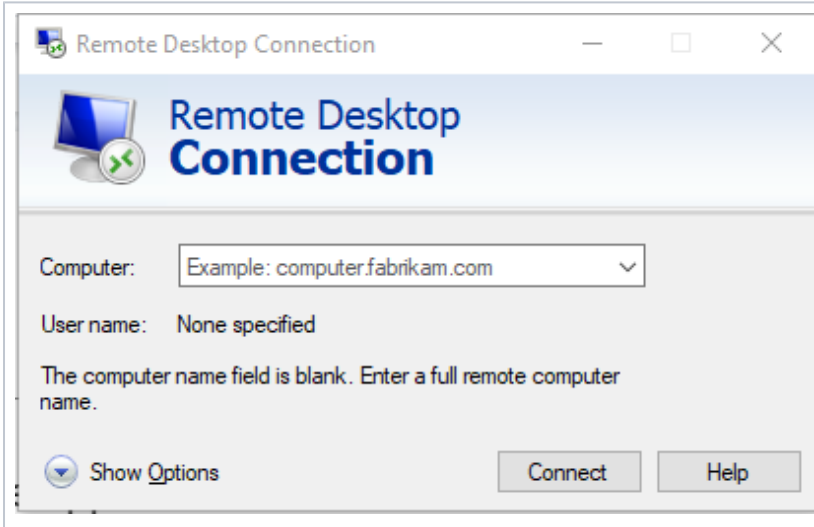


Access Picaso / EP / PicReport

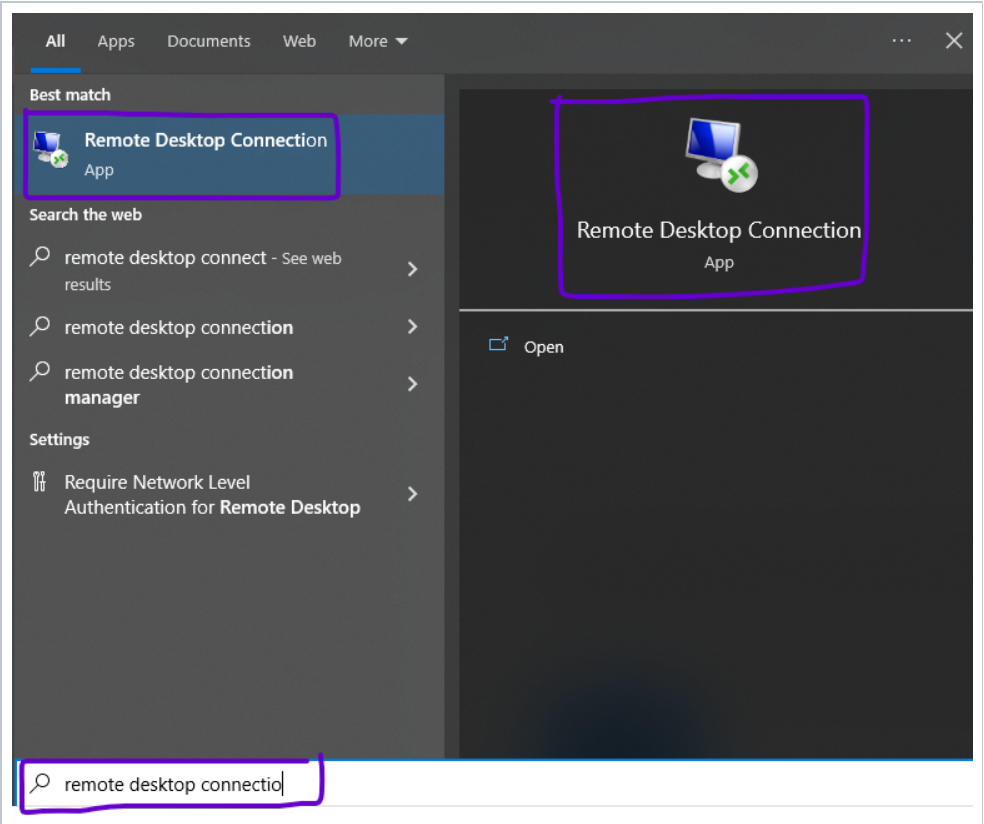
Once access has been granted, how do I access Picaso?

Step-by-step guide

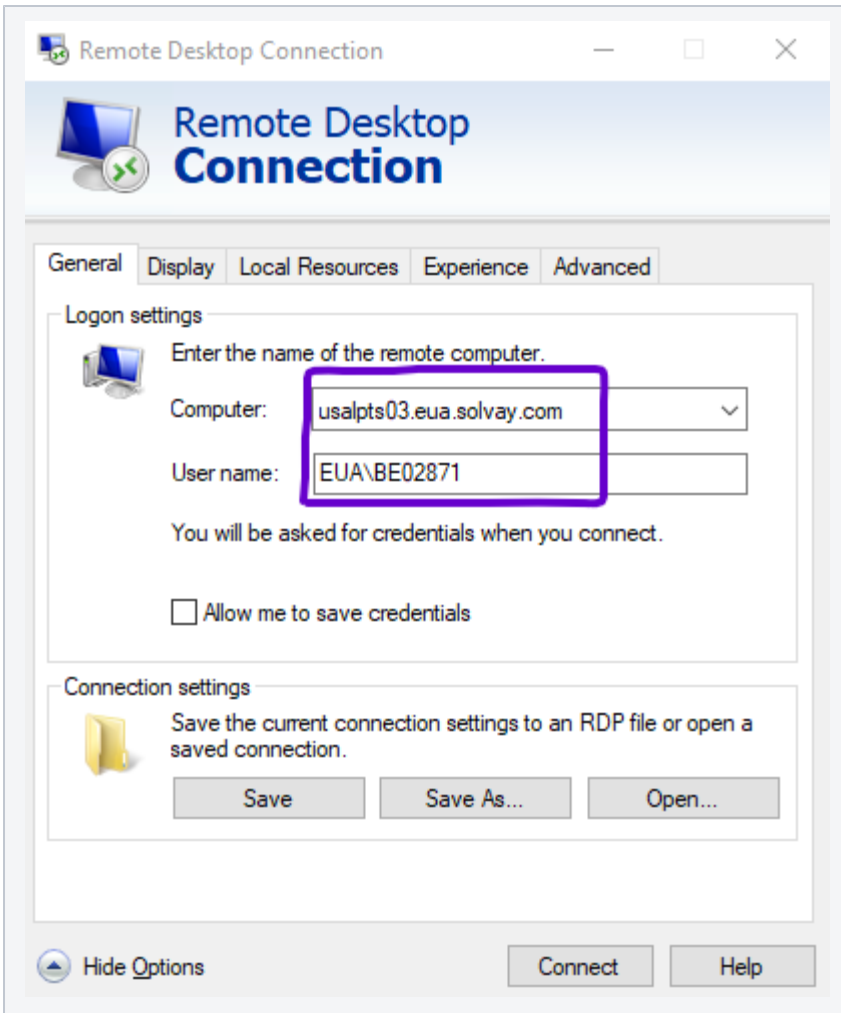
1. Find your Remote Desktop Connection application



If it is your first time with Remote Desktop Connection, use the search function of your laptop to find it:



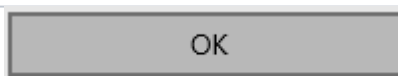
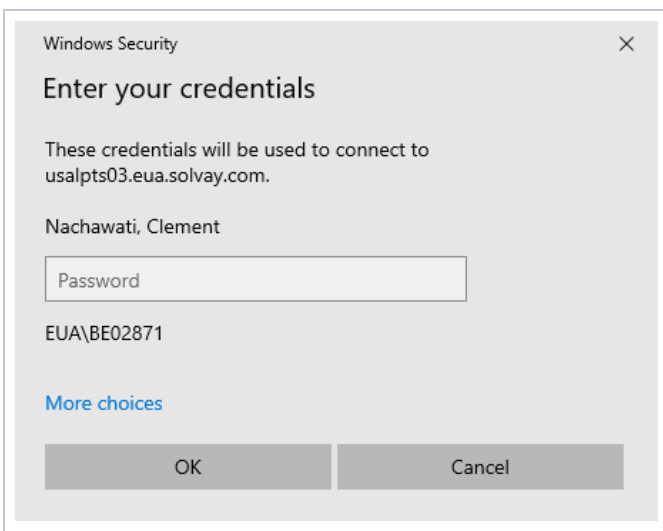
2. Enter the server's address and your user ID



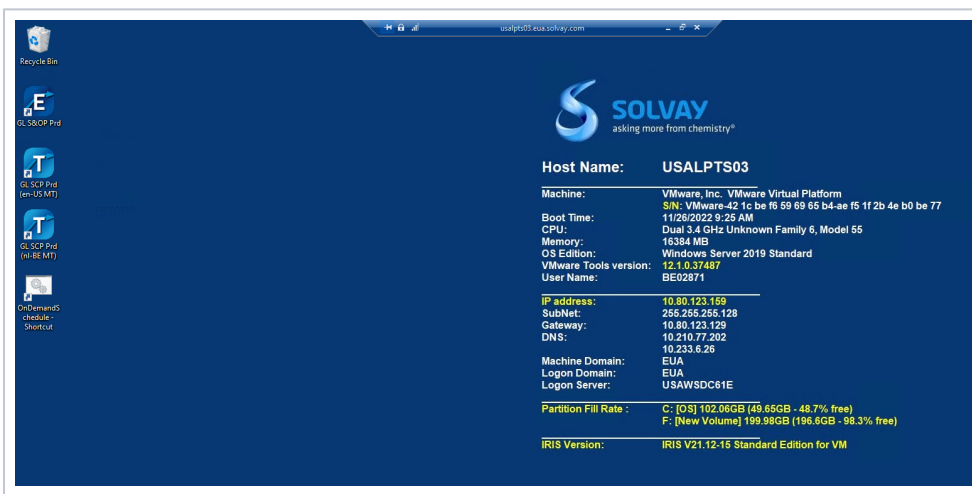
Servers address	
Picaso China	USALPTS04.oxo.priv
PicReports China	
Picaso Rest of the World	USALPTS03.oxo.priv
EP	
PicReports	
PAM Tools	

Connect



3. hit **Connect**.
4. It opens a window and asks for your password. This is your network password (same as the one you use to connect to the Solvay network)

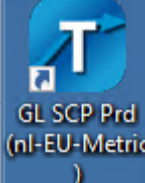


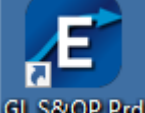

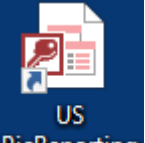



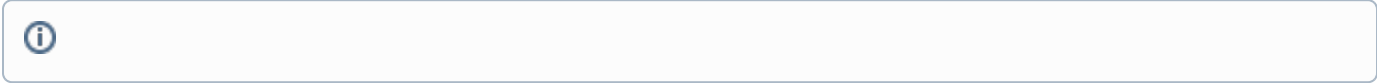
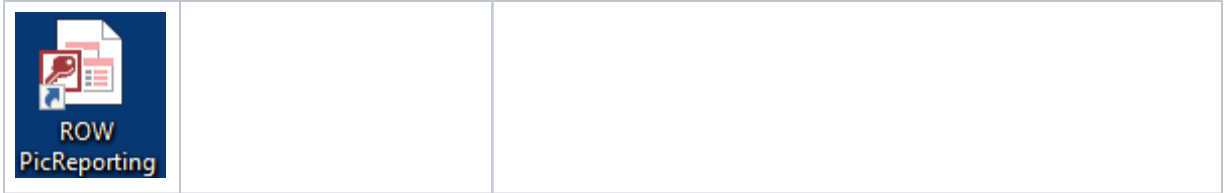
5. Enter your password, then hit
6. It opens a session on the server.



7. Open your application of choice:

<p>Picaso</p>	<p>All shortcuts open the same database. But it lets you work with specific date / unit of measure format.</p>	
	<p>TPS (aka Picaso) GL SCP Prd (en-EU-KG)</p>	<p>Language: English EU Date format (DD / MM) UoM: KG (MT converted to KG)</p>
	<p>TPS (aka Picaso) GL SCP Prd (en-EU-Metric)</p>	<p>Language: English EU Date format (DD / MM) UoM: Metrics</p>

 <p>GL SCP Prd (nl-EU-Metric)</p>	<p>TPS (aka Picaso) GL SCP Prd (nl-EU-Metric)</p>	<p>Language: Dutch EU Date format (DD / MM) UoM: Metrics</p>
 <p>GL SCP Prd (en-US-Pounds)</p>	<p>TPS (aka Picaso) GL SCP Prd (en- US pounds)</p>	<p>Language: English US Date format (MM / DD) UoM: pounds</p>
 <p>GL SCP Prd (Windows Region)</p>	<p>TPS (aka Picaso) GL SCP Prd (Windows Region)</p>	<p>Language: English; Change Windows region setting to English (Canada) US date format (MM/DD) & display quantities based on ADM UM (MT or Kgs) --- Language: English; Change Windows region setting to English (Zimbabwe) US date format (MM/DD) & display all quantities in KGS Resources: <ul style="list-style-type: none"> • Configure PICASO for US dates and quantities in KG & MT • Configure Picaso for US dates and all quantites in KG </p>
<p>EP</p>		
 <p>GL S&OP Prd</p>	<p>EP (Enterprise Planning)</p>	
<p>PicReport</p>		
 <p>Consolidate PicReporting</p>		
 <p>US PicReporting</p>		
 <p>Fluro PicReporting</p>		



Related articles

- [Access Picaso / EP / PicReport](#)
- [Run the weekly adherence Report](#)
- [Run the monthly adherence Report](#)
- [Redirect a forecast from a shipt-to to another ship-to](#)
- [Setup a material in Picaso](#)