

# Coordinator

#NA



## THE COORDINATOR PATH

The below categories are specifically within the role of Coordinator  
The job instructions are organized in a logic way into 4 categories

### Onboarding

- AMERICAS
- AMERICAS
- AMERICAS
- AMERICAS
- AMERICAS
- AMERICAS
- Specificities NAM
- Specificities LAM
- OLD WIKI Specificities LAM
- OLD WIKI Specificities NAM
- Manage BNP Ireland Financing program
- Management of Confirming process for Spanish customers
- Specificities 7523
- Specificities TH
- AMERICAS

no current documents

- AMERICAS
- AMERICAS
- OLD WIKI
- AMERICAS
- OLD WIKI

### GBU Organization

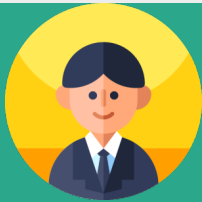
- AMERICAS / 02
- APAC
  
- AMERICAS

## GBU Control

- GLOBAL
- AMERICAS
- AMERICAS
- AMERICAS - "Centralizados"
- APAC
- EMEA

## GBU Analysis and Meetings

- GLOBAL



## RESPONSABILITIES AS COLLECTOR

All Coordinators are also collectors of the accounts under their name  
Choose the category of the process you are looking for below

## Outbound Communication

- AMERICAS
- APAC / APAC 02

no current documents

- EMEA
- APAC
- OLD WIKI
- EMEA / EMEA 02
- OLD WIKI
- AMERICAS
- OLD WIKI
- AMERICAS
- EMEA
- APAC
- EMEA
- APAC
- APAC / APAC 02

# Financial Account Reconciliation

- [AMERICAS](#)

no current documents  
no current documents

- [AMERICAS](#)
- [EMEA](#)
  
- [AMERICAS - "Sucatas"](#)
- [AMERICAS - IECRA allocation / LINK 02](#)
  
- [AMERICAS](#)
- [OLD WIKI](#)
  
- [EMEA / EMEA 02](#)
- [APAC](#)

## Reporting

- [AMERICAS / AMERICAS 02](#)
- [EMEA](#)
  
- [AMERICAS / AMERICAS 02](#)
  
- [AMERICAS / AMERICAS 02](#)

no current documents

## Service Unit Requests

no current documents

- [AMERICAS](#)

no current documents

- [AMERICAS / AMERICAS 02](#)
- [APAC / APAC 02](#)
- [OLD WIKI](#)
  
- [AMERICAS](#)
- [EMEA](#)
- [APAC / APAC 02](#)