

Servers and Access

Servers

We have two servers

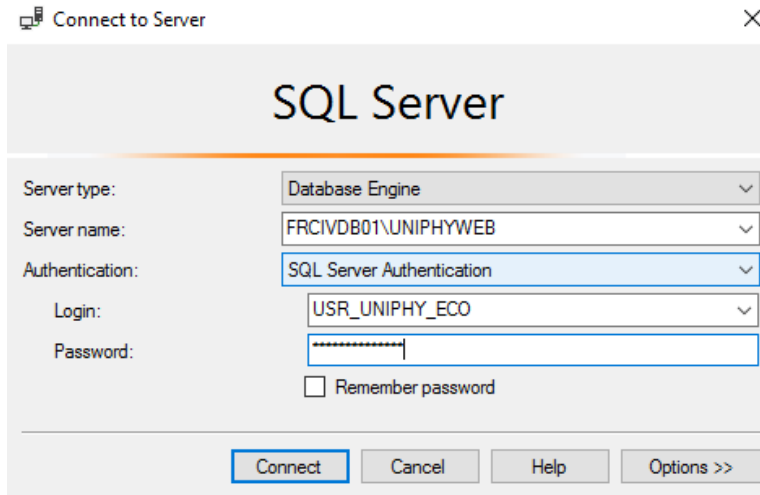
- FRCIVDB01 for DataBase
- FRCIVAS15 for web site

Access to the data base

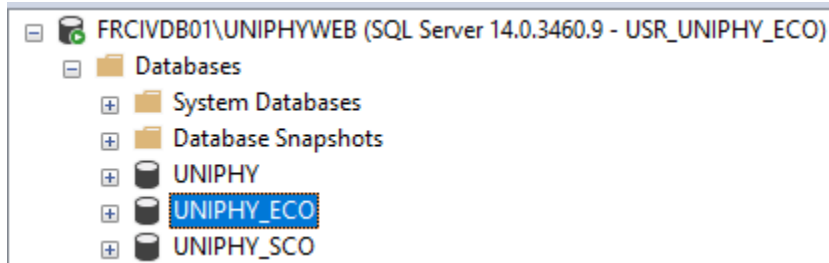
Open a session on FRCIVDB01.

The database is on SQL Server manager studio.

For open database use this parameter :



The database is here :



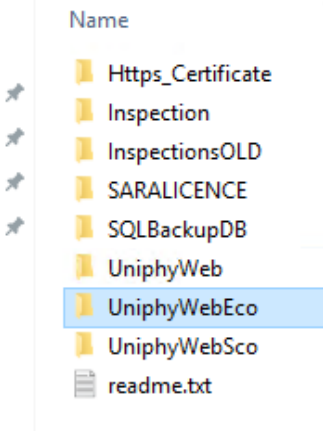
(For Sco change USR_UNIPHY_ECO by USR_UNIPHY_SCO and the database was UNIPHY_SCO)

Access to the web site

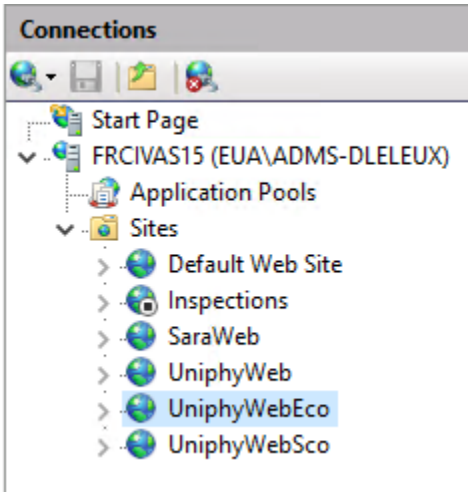
Open a session on FRCIVAS15.

The web site is on the folder F:\UniphyWebEco

This PC > Data (F:) >



On IIS the web site is here :



UniphyWeb is the old site for Solvay.

UniphyWebEco is the site for Eco.

UniphyWebSco is the site for Sco.