

J020_ECC_Table_to_GCS

⚠ Please be informed that we must be cautious to extract large volumes of data directly from ECC systems as it may impact on the performance of the system.
If possible, we should utilize the data warehouse (BW)

The connection to SAP PF1 is already in the context g_CNX_SAP_PF1

	Name	Type	Comment	DEV	PRD	PRE	QAS
				Value	Value	Value	Value
1	sapHost	String		df1sap.eua.solvay.com	pf1nonha.eua.solvay.com		qf1sap.eua.solvay.com
2	sapClient	String		020	020	020	020
3	sapSystemNun	String		69	40	45	77
4	sapUser	String		RFC_TAL_PF1	RFC_TAL_PF1	RFC_TAL_PF1	RFC_TAL_PF1
5	sapUserPwd	Password		*****	*****	****	*****
6	sapLanguage	String		EN	EN	EN	EN

The connection to SAP WP1 is already in context g_CNX_SAP_WP1

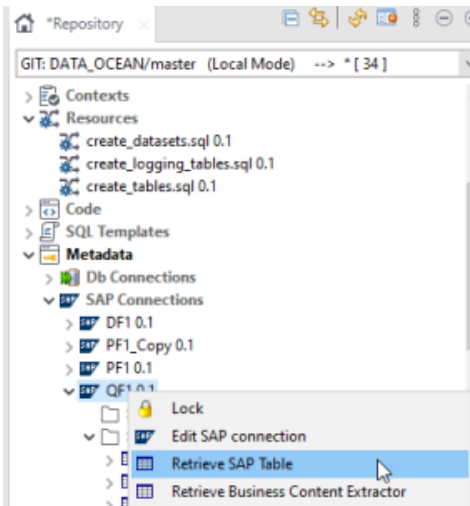
Extract data

From the ECC, we can extract only information from the table. To get metadata it is highly recommended to get it from

1. Table (tSAPTableInput)

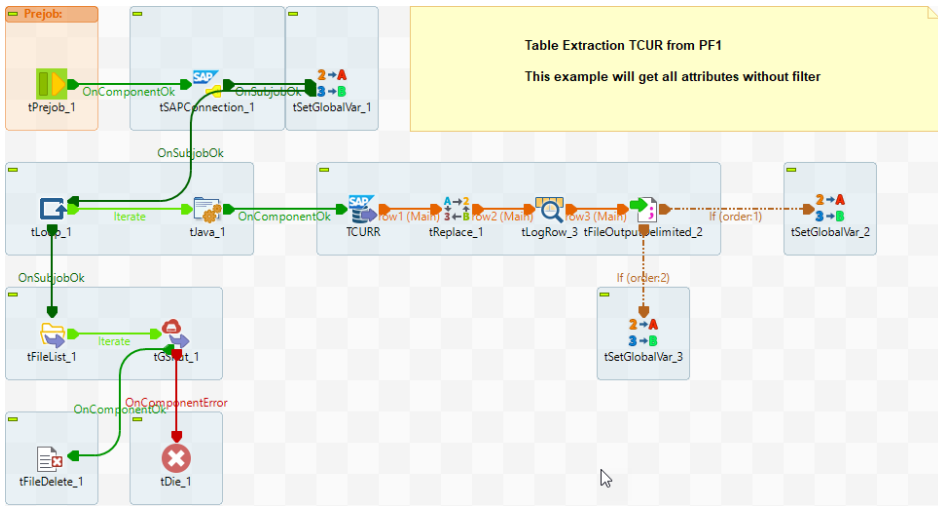
1.1 Retrieve metadata

Metadata > SAP Connection > (Server) > right click and select Retrieve SAP Table



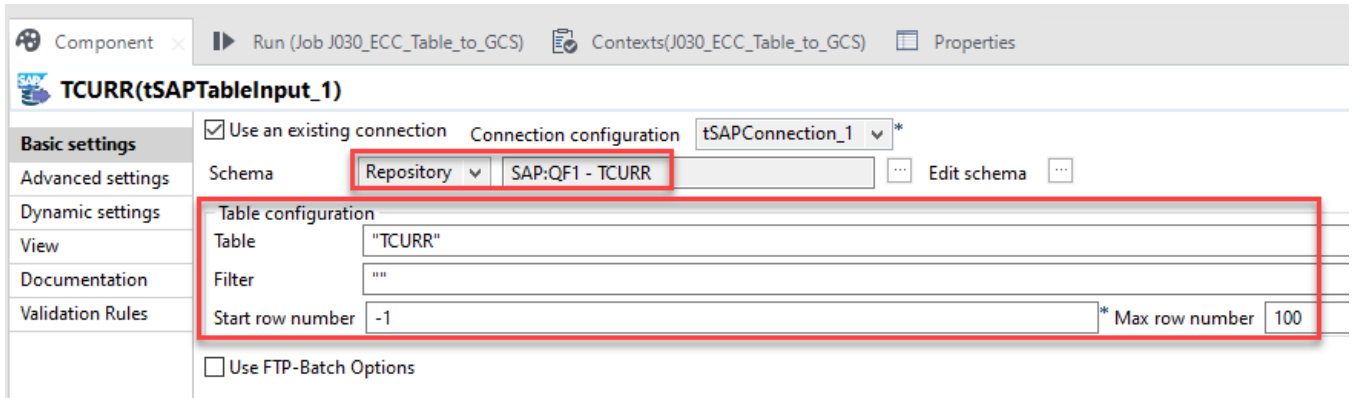
Search the table and click finish

1.2 Copy the reference job J020_ECC_Table_to_GCS to the new job



1.3 Change component tSAPTableInput (attribute)

Drag and drop the metadata table object to the new job or select to change the schema on the existing object and ensure that the schema, table name, filter, number of records are correct.



Filter is required to get only required data

1.4. Click on the sync column to get the new schema on tLogRow if you want to see the output during the run of the job or delete this job

1.5 Add the context g_CNX_SAP_xxx on the server that need to be connected.

1.6 Enter the parameter context to connect to GCP

Variable	Meaning
I_VAR_GCS_CSV_TO_STAGING_BUCKETNAME	Bucket Name in GCS
I_VAR_FOLDER	Local path
I_VAR_FILE	Local filename
I_VAR_LIMITROW	Limit number of row per file in case of tSAPTableInput
I_PATHDIR_GCS_CSV_TO_STAGING_SERVICE_ACCOUNT_PATH	Location path and file of service account (JSON file)

The rest of the job will extract the data from SAP and generate the file on the local folder, then upload it to the bucket that we enter in point 1.6

⚠ The job will not delete the file in GCP but overwrite it. Therefore, be careful if the next run has number of file less than pervious one, the old data will be existing in the files and possible to be wrong data to load to staging. Or it is better to name the file with timestamp in order to avoid overwrite wrongly.