

Dashboarding Solution Options

Dashboards can be created through Inetsoft, a third party application that is integrated into Shiftconnector. These dashboards will be mainly for the purpose of displaying data relevant to the site over short periods of time with minimal calculations. Data for these dashboards can be pulled from any source with an accessible API, Google Sheets, and Shiftconnector databases. Some use cases and available functionalities can be seen below:

Morning Meetings

Information can be pulled from Shiftconnector forms already being filled out, or any other connected data sources such as Google Sheets. Once data is pulled, it can be formatted to the site's specification and displayed based on the entry date to display relevant data for daily or weekly meetings on site.

The screenshot shows a web dashboard for Shiftconnector. The main content area is titled "5 Minute Safety" and contains a "Discussion" section about Shift Work Sleep Disorder (SWSD). Below this is an "LDAR" (Leak Detection and Repair) table with columns for "DOR" and "NON-DOR", listing repair dates and descriptions. At the bottom, there is an "Upcoming Events" section with two tables: "Raw Materials" and "Raw Materials Rates".

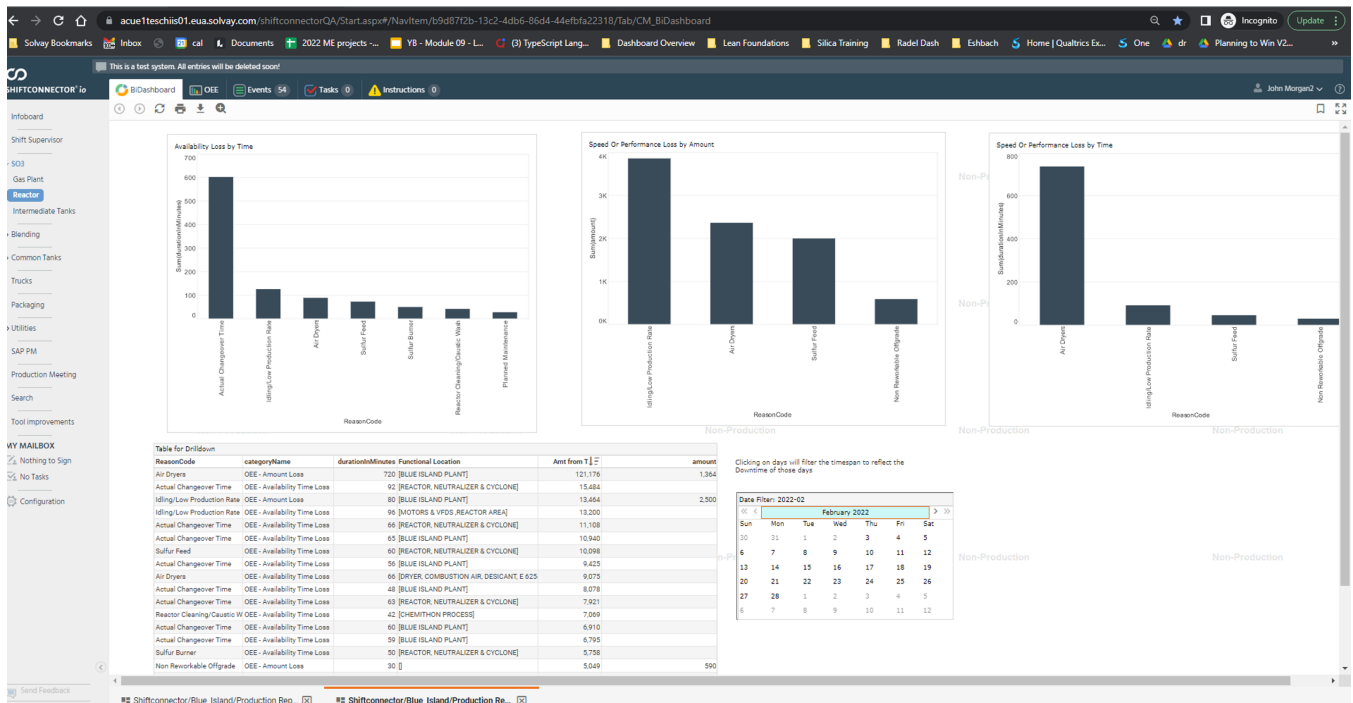
LDAR	
DOR	NON-DOR
	Final due 2/23 ENV - 1st Repair Completed - 20442.07 - 2ND LVL PART 15 SEAL FLUSH TO MY-1521 - Leaking screw connector PASSED ENV - 1st Repair Completed - 20402.09 - 3RD LVL PART 15 SEAL FLUSH ON MY-1551 TOP OF MC-1550 - Leaking screw connector PASSED Final due 2/25 ENV - 1st Repair Completed - 22044.04 - GRD LVL ON PMP-MG-538 SEAL LIQUID - Leaking screw connector FAILED; 2nd attempt completed by maint on 2/14 - PASSED First attempt due 2/16; final due 2/26 ENV - 23373.02 - GRD LVL N/S SWITCH BANK W.OF MC-912.MHV-884-06 - Flange leaking 1st attempt complete by maint on 2/14 - PASSED

Raw Materials	
Monday	-246 Drops have been hanging up, water wash drop chute between batches; vibrators not working causing build-up -1249 Live bottom continuing -247 Recalibration on Thursday
Tuesday	-1249 work continues -247 Recalibration on Thursday

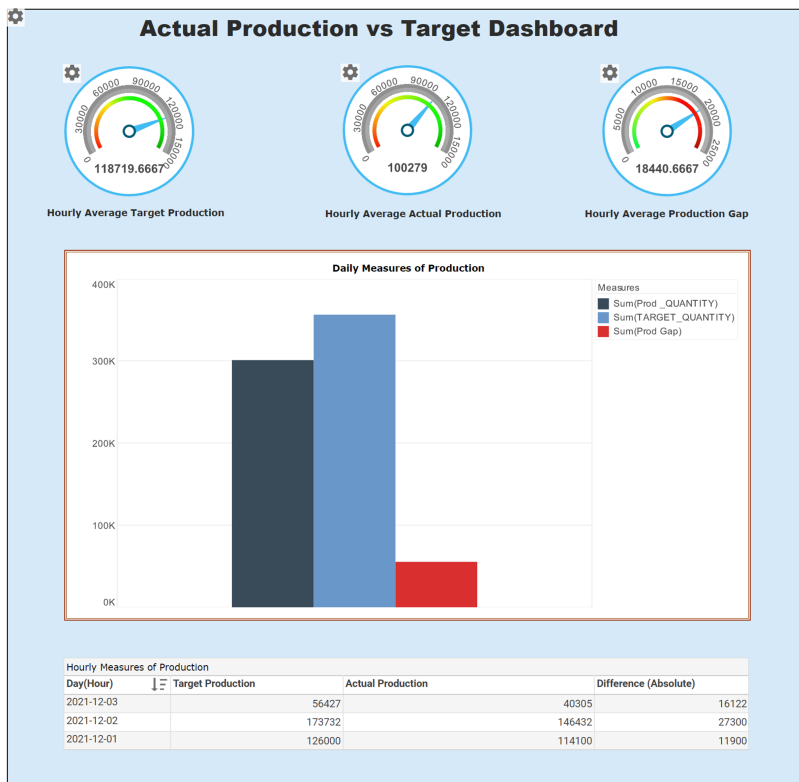
Raw Materials Rates		
	Pot Carb	Sulfone
MDC	45	95
LB/min		
Hours		

Basic performance tracking

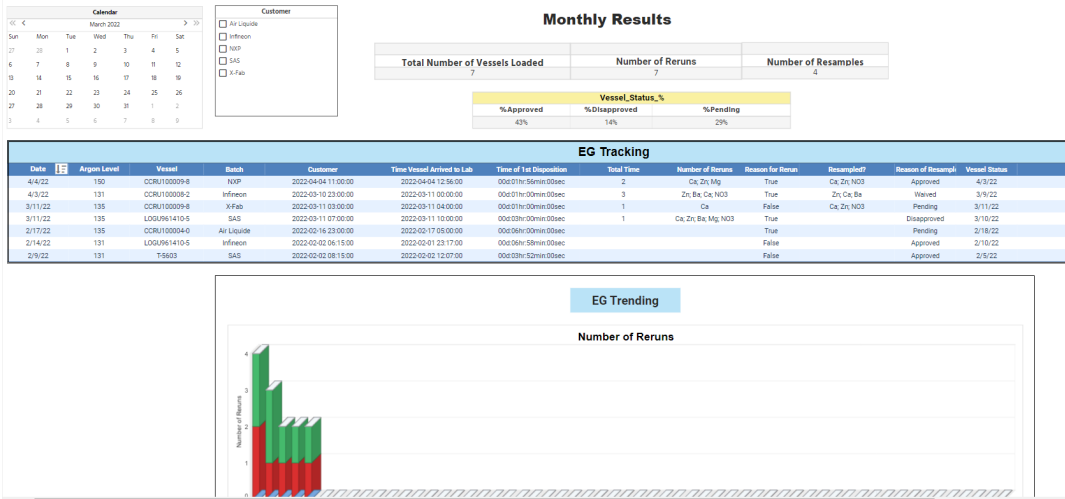
Simple graphics and tracking can be created to monitor performance and flow rates of reactors around the site. These are not recommended for complex analytical equations or for monitoring over long periods of time.



There are several functionalities that allow for monitoring of metrics on site, including graphical representation, displaying data in tables, and visual representations of valid/invalid data points.



This can also be used for analysis on lab data, which can be sorted and separated by any of the categories available in the data set such as customers or the elements being tested



Safety Cross

A visual representation of any safety events that happen on site, with indicators for days where Medium or High level incidents occur.

5 Days without incident



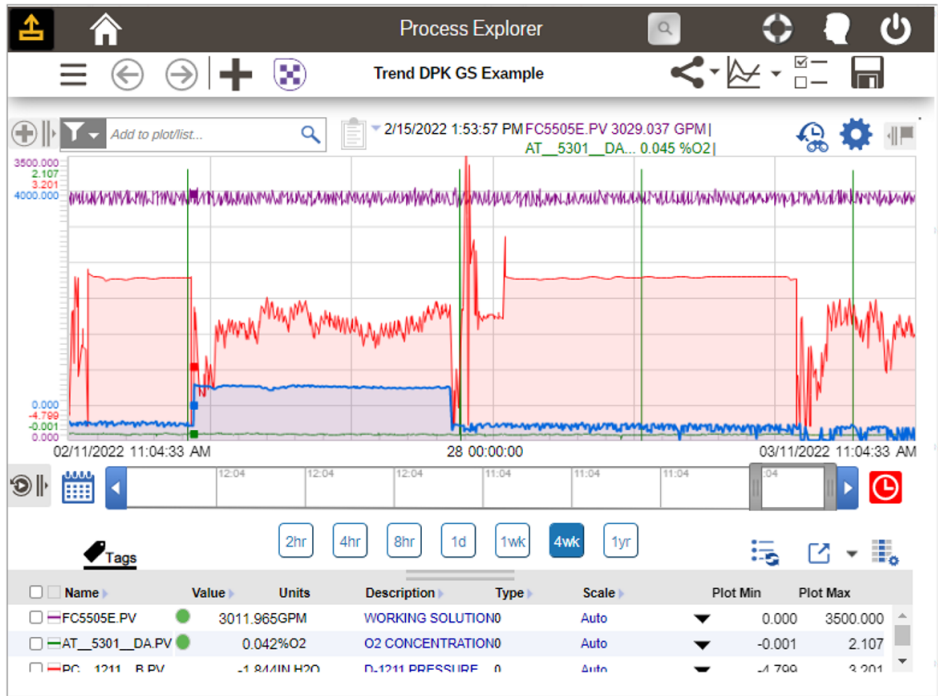
Date	Description	Safety Classification	User
Apr 22, 2022	test 2	Medium	Natalie Wittick
Apr 22, 2022	test	High	Natalie Wittick
Apr 21, 2022		Medium	John Morgan2

Non-Production Non-Product
Non-Production Non-Product

External Dashboard Displays

Dashboards from other sources, such as Google Sheets, Process Explorer, and Seeq can also be displayed in Shiftconnector

Seeq dashboards for more complex analytics:



Other webpages with site resources, such as Awesome Table:

1 - 12 / 12

Task/Procedure	Plant	Area	Machine	Owner
Reactor Changeover	Baton Rouge	Cathy	Reactor	Name 1
Valve Inspection	Baton Rouge	Cathy	Reaction	Name 2
Rag Layer Standards	Baton Rouge	Daphne	Extraction	Name 3
Reboiler Autonomous Maintenance	Baton Rouge	Daphne	Veratrole Distillation	Name 4
Changing Bag-Filter				
Troubleshooting Upset				
How to Scan Raw Materials				
MMBE Transactions				