

Electrical Properties



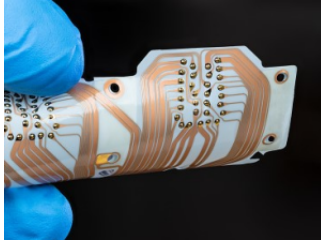
ADL Homepage

APPLICATIONS

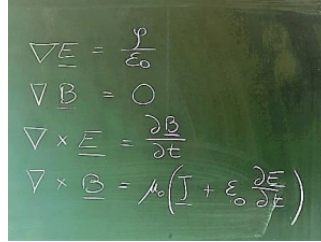
THEORY & MODELS

CAPABILITIES

Low Loss Dielectrics



Electrical Properties of Polymers



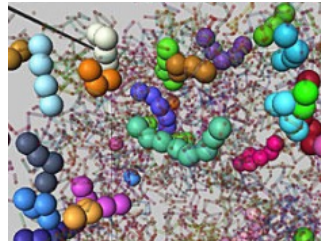
Roadmap



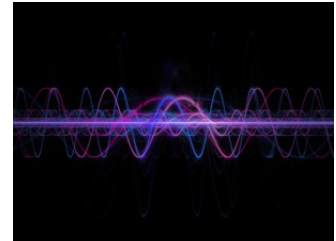
Piezo-electricity



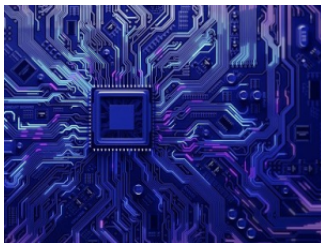
Modeling Electrical Properties



Electrical Tests



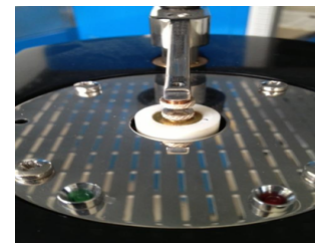
Semicon Electronics



Dielectric properties of films



Electrical Testing Labs



E-Mobility

