

DataLab Demos/Use Cases

This page provides scenarios to demo the DataLab environments to users, stakeholders, management etc.

- [DatAgrow](#)
- [DatAroma](#)
- [DataBat](#)
- [DataCoat](#)
- [DataSeed](#)
- [DataSpP](#)
 - [Thermal and Mechanical](#)
 - [Create analysis request in Labware](#)
 - [Answer request in Labware](#)
 - [View request results in DataSpP](#)
 - [Search for information in DataSpP](#)

DatAgrow

DatAroma

DataBat

DataCoat

DataSeed

DataSpP

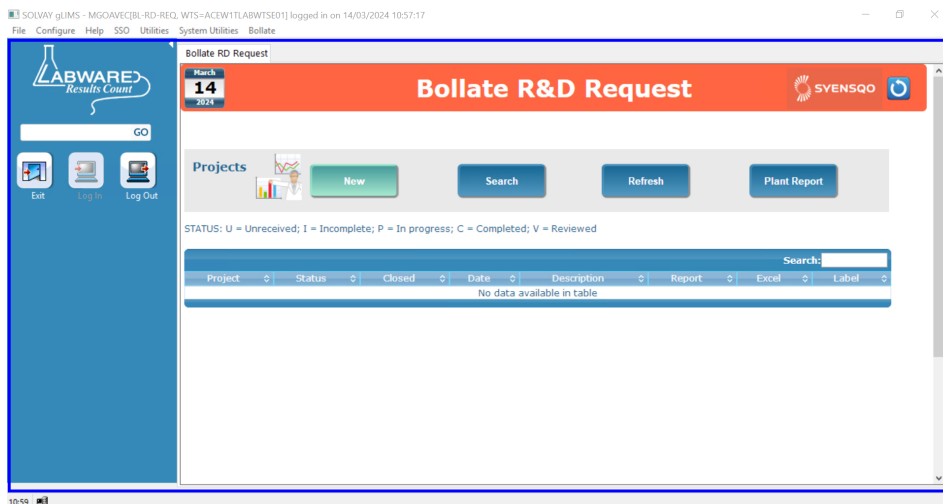
Thermal and Mechanical

Create analysis request in Labware

Log in

1. Open Labware LIMS test environment (LabWare AWS VAL). It is recognizable with a blue border.
2. Sign in as a analysis requestor by selecting the Role BL-RD-REQin the dropdown list

Landing page



Create a project

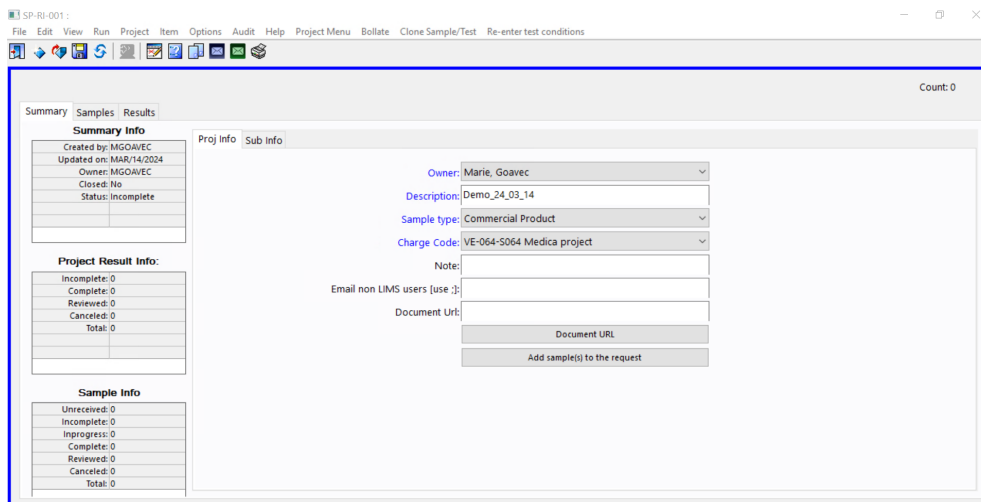
3. Click on "New" in "Projects"; the Project window opens.

4. Fill out the Project information (mandatory information in blue)

- **Description:** "Demo YY_MM_DD"
- **Sample type:** select from dropdown list depending on scenario considered
- **Charge code** i.e. WBS code: select from dropdown list depending on scenario considered
- **Note:** any additional comments

5. Click on "Save" icon

Filled Project window



Add a sample and analysis test

6. Click on "Add sample(s) to the project"; the Sample window opens

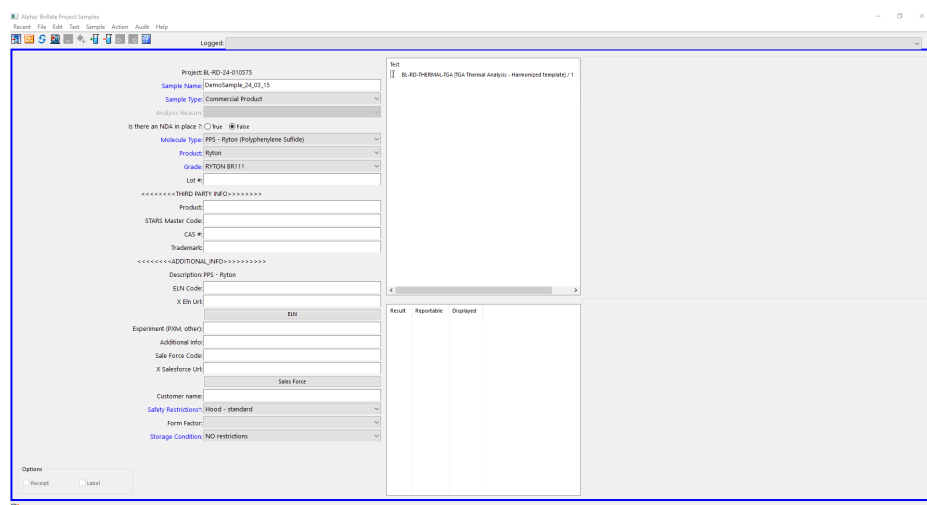
5. Fill out the Sample information (mandatory information in blue)

- **Sample:** "Demo YY_MM_DD"
- **Sample type**
- **Molecule Type**
- **Product**
- **Grade**
- **Lot:** connection between SAP and Labware
- **Third Party Info:** for non-Syensqo product
- **Additional info:** information on ELN, Salesforce and/or customer

- Safety restrictions
- Storage conditions

6. Click on "Add" in "Test" or on "Add" icon (test tube with green + sign); a window opens
7. Select the analysis to be performed on the sample, several can be selected at the same time. Below are listed the analysis included in DataSpP
 - BL-MECH analysis types
 - BL-THERMAL analysis types
8. Select the analysis variation to be performed on the sample, it becomes a test; the window closes
9. Repeat steps 6-8 to add more tests to the same sample
10. Click on "Log sample" icon (computer screen with erlenmeyer); a window opens
11. Fill out the Test conditions (mandatory information in blue) and save; the window closes
12. Click on "Exit" icon (door with arrow); the Sample window closes
13. Click on "Save" in the Project window; the Project window closes

Filled Sample window



Output

- Information on the sample and the analysis tests to perform have been sent to the lab
- The information and progress can be consulted by requestor in the initial landing page by clicking on Project
 - Summary: project information
 - Samples: list of samples, their status ("unreceived") and the progression of the tests (vial becomes blue as testing progresses and green when all tests completed)
 - Results: results obtained for the different samples/test couples (empty as of now)

Answer request in Labware

View request results in DataSpP

Search for information in DataSpP