

CHROMATOGRAPHY

1. GAS CHROMATOGRAPHY



2. GAS CHROMATOGRAPHY - MASS SPECTROMETRY

GAS
CHR

Brand

Model

Configu
ration

Applica
tion
catego
ries



- compounds
- Quantification of purity and impurities

G
C
-
M
S

Br
Mc

Co
ura

Ap
ati
cal
rie

3. PYROLYSIS GAS CHROMATOGRAPHY - MASS SPECTROMETRY



4. AUTOMATED THERMAL DESORPTION GAS CHROMATOGRAPHY - MASS SPECTROMETRY

PYROLYSIS GAS

CHR

- MA

SPEC

Brand

Model

Configu
ration

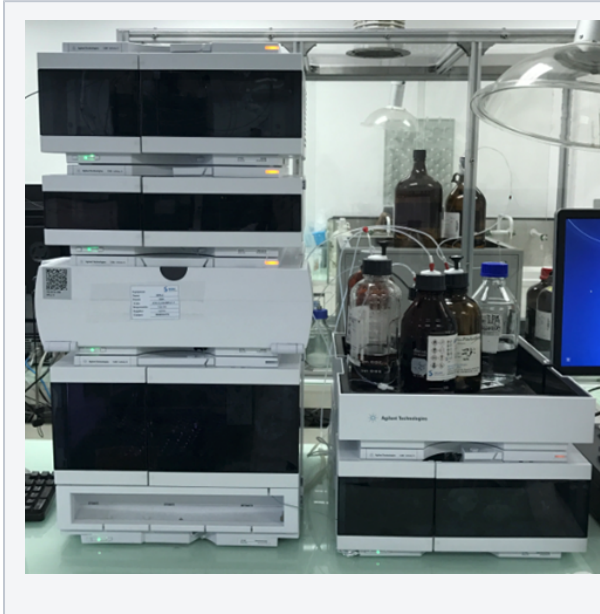


- Injection System: Multi-Shot Pyrolyzer
- Detector: FID, 5975C MS (EI & CI)

**Applica
tion
categor
ies**

- Chemical structure identification of polymers and additives

5. LIQUID CHROMATOGRAPHY



**LIQUID
CHR**

Brand

Model

**Confir
uratic**

**Appli
tion
categor
ies**

6. ULTRA HIGH PERFORMANCE LIQUID CHROMATOGRAPHY



**ULTRA HIGH
PERFORMA
LIQUID
CHROMATC**

Brand Water

Model H-Cla

**Config
uration**

- C
- C
- A
- L

**Applica
tion
categor
ies**

- C
- C
- C
- C

7. ULTRA HIGH PERFORMANCE LIQUID CHROMATOGRAPHY- MASS SPECTROMETRY

8. ULTRA PERFORMANCE CONVERGENCE CHROMATOGRAPHY - MASS SPECTROMETRY

**ULTRA HIGH
PERFORMANCE
LIQUID
CHROMATOGRAPHY-
MASS
SPECTROMETRY**

Brand Waters

**UI
PI
Cl
Cl
- I
SI**

Br:



Model

Configuration

Application categories



- Identification and quantification of trace (part-per-billion – part-per trillion) levels of compounds in complex sample matrices

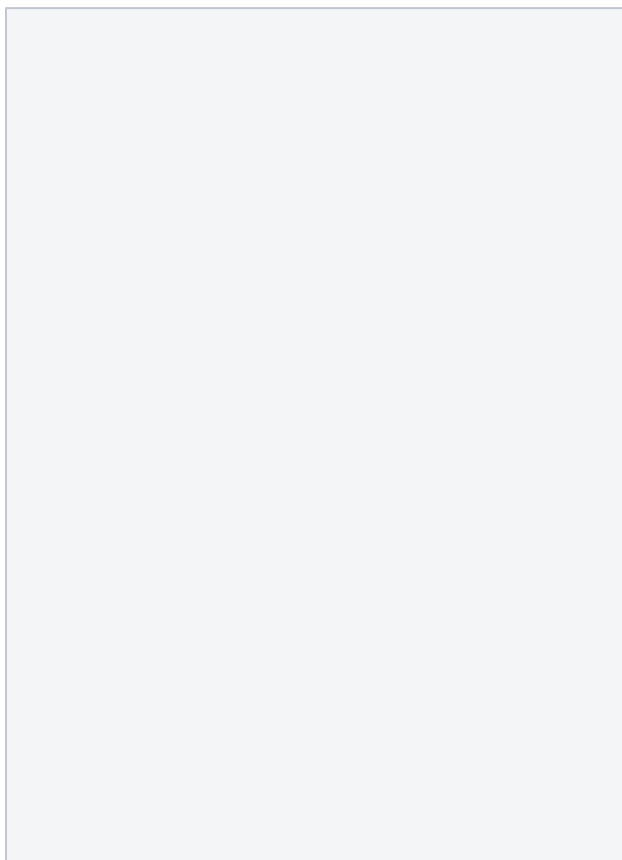
Model

Configuration

Application categories

9. ULTRA HIGH PERFORMANCE LIQUID CHROMATOGRAPHY - HIGH RESOLUTION MASS SPECTROMETRY

10. GEL PERMEATION CHROMATOGRAPHY



ULTRA HIGH PERFORMANCE LIQUID CHROMATOGRAPHY - HIGH RESOLUTION MASS SPECTROMETRY

Brand

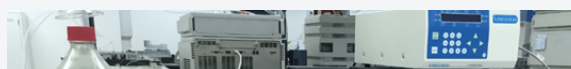
Waters

Model

H-Class Xevo G2XS Q-ToF

Configuration

- Ion source: ESI, ASAP, APCI, APPI
- Mass detector: Single Quadrupole + Time-of-flight
- Scan range: 50 -140,000 Da m/z



Model

Configuration

Application categories



Ap
plic
ation
cat
ego
ries



database

Ap
ati
cal
rie

11. ION CHROMATOGRAPHY



ION CHROMATOGRAPHY

Brand

Dionex &
ThermoFisher

Model

ICS1000, ICS3000,
Intergrion

**Config
uration**

- Gradient quarterly pump
- Autosampler with 100-position tray
- Eluent generator
- Conductive detector

**Applic
ation
catego
ries**

- Determination of Anions: halogen ions, SO₄²⁻, PO₄³⁻, NO₃⁻, ...
- Cations: Amine series, Na, K, Li, Mg, Ca, ...