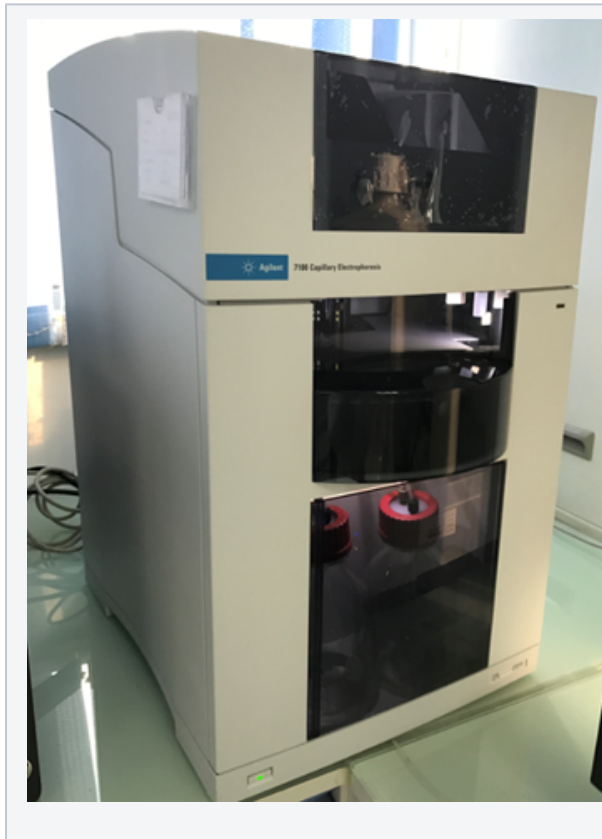


# Spectrophotometer

## 1. CAPILLARY ELECTROPHORESIS



CAP  
ELEC

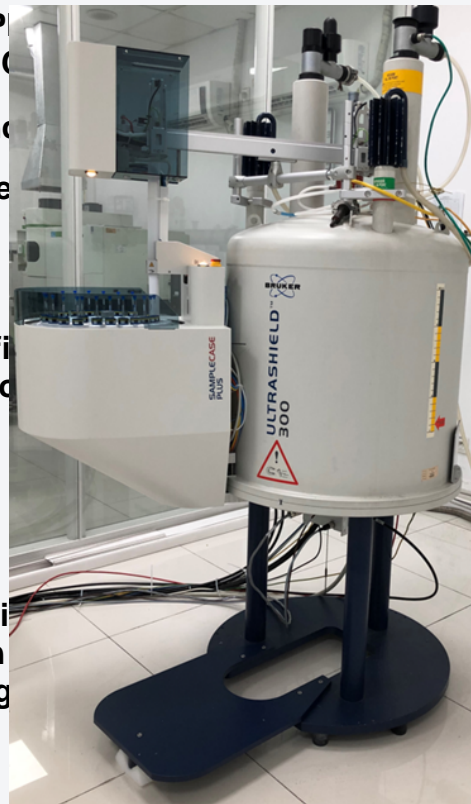
Brand

Model

Config  
uration

Applica  
tion  
categori  
es

## 2. NUCLEAR MAGNETIC RESONANCE SPECTROMETRY



NUCLEA  
MAGNET  
RESONA  
SPECTRI

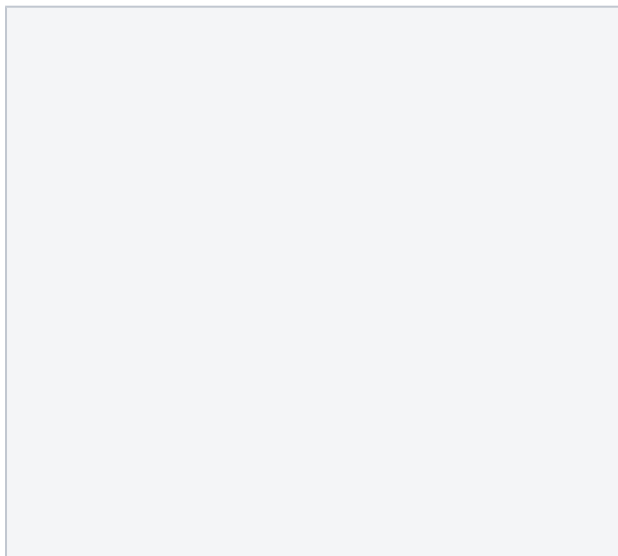
Brand

Model

Configu  
ration

Applica  
tion  
categori  
es

## 3. FOURIER TRANSFORM INFRARED SPECTROMETRY



FOU  
TRA  
INFR  
SPEC

Brand

Model

Configu  
ration

## 4. POLAROGRAPHY



- sampler
- ATR sampler
- Gas sampler

PO

Br  
nd

Mo  
el

Co  
fig  
rat  
on



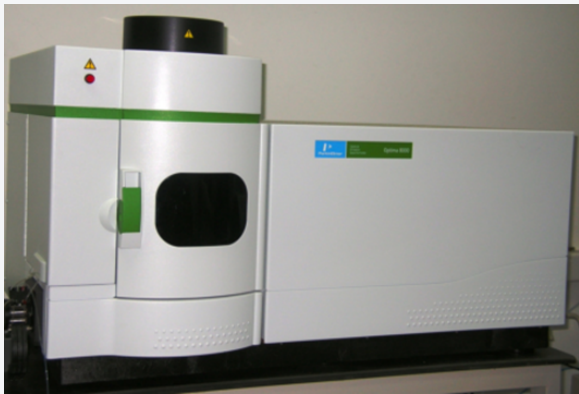
**Application categories**

- Identification of chemical groups mainly for organic samples

**Application categories**

**5. INDUCTIVELY COUPLED PLASMA - OPTICAL EMISSION SPECTROMETRY**

**6. AUTO DIGESTION PLATFORM**



**INDUCTIVELY COUPLED PLASMA - OPTICAL EMISSION SPECTROMETRY**



**Brand** Perkin Elmer

**Model** Optima 8000

**Configuration**

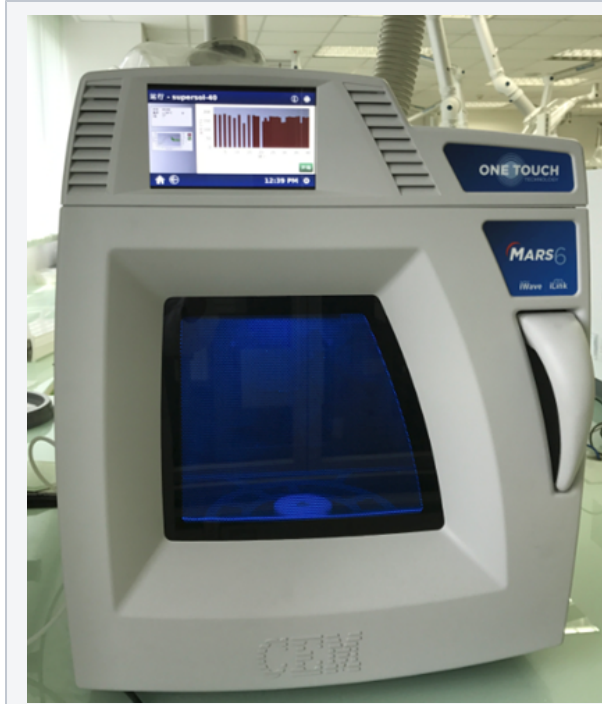
- Autosampler with 60-position tray

**Application categories**

- Metal elements detection
- Non-metal elements detection: P, S, I, Si, Se, As...

**7. MICROWAVE OVEN**

**8. X-RAY DIFFRACTION**



**MICROWAVE**

**Brand**

**Model**

**Configuration**

**Application categories**



**X-DI**

**Brand**

**Model**

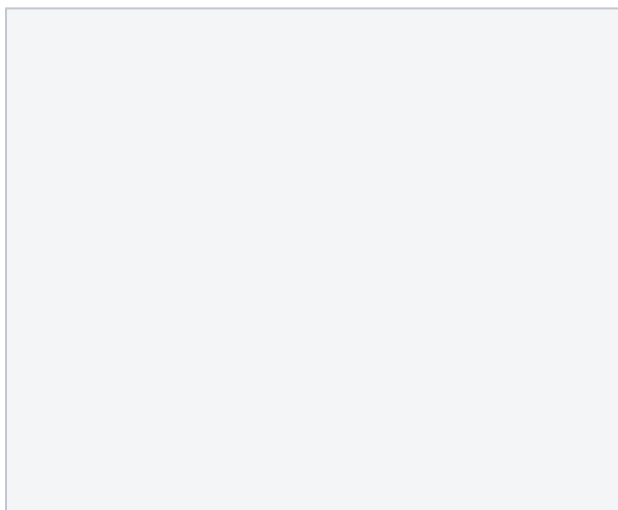
**Configuration**

**Application categories**

microwave extraction of additives in polymer sample

## 9. X-RAY FLUORESCENCE

## 10. Portable XRF Analyzer



**X-RAY FLUORESCENCE**

**Brand**

PANalytical

**Model**

ZETIUM

**Configuration**

- Autosampler with 68-position tray
- Liquid sample testing module

**Portability**

**Brand**

**Model**



- Quantitative analysis results of elements (O-Am) can be analyzed.
- Standard-free sample analysis (Omnian) can also obtain accurate results.
- Stratos analysis ( Multi-layers coating analysis, not for organics)

**App  
licat  
ion  
cate  
gori  
es**



A  
p  
p  
l  
i  
c  
a  
t  
i  
o  
n  
c  
a  
t  
e  
g  
o  
r  
i  
e  
s

## 11. AUTO TITRATOR

## 12. ULTRAVIOLET SPECTROMETRY

	<b>AUTO TITRATOR</b>		<b>UL</b>
	<b>Brand</b>	Metrohm & Mettler Toledo	<b>SI</b>
			<b>Br:</b>



**Model Configuration**



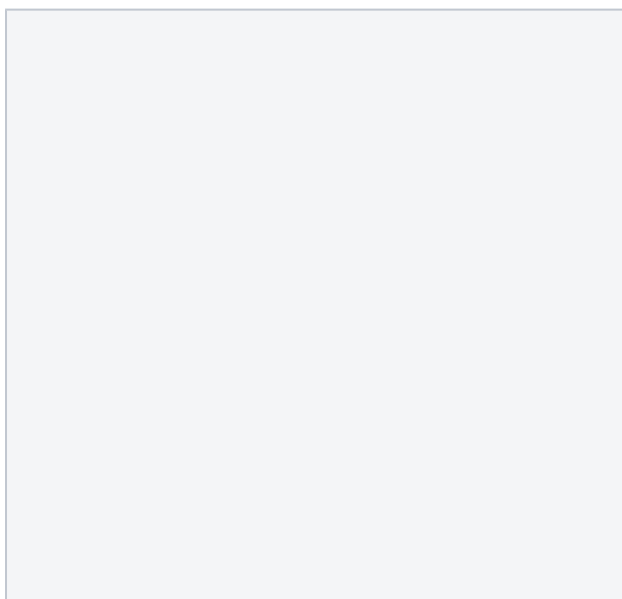
**Model Configuration Application**

**Application Categories**

- Coulometric titration: H<sub>2</sub>O content
- Potential titration: Acid-base content
- Precipitation titration: Cl<sup>-</sup> content
- Redox Titration

### 13. SCANNING ELECTRON MICROSCOPE - ENERGY DISPERSIVE SPECTROMETRY

### 11. AUTO TITRATOR



**SCANNING ELECTRON MICROSCOPE - ENERGY DISPERSIVE SPECTROMETRY**

**Brand** Zeiss & Oxford

**Model** EVO18, INCA ENERGY X-Max 20 EDS

**Configuration**

**Application Brand Model Configuration**



Application categories



Application categories