

I identify the relevant transactions while handling BFC interfaces

Tasks to be completed when documenting an operation (from creation to publication)

1. Enter the **Title of the operation / page**

2. Add the following Labels:

- Scope of applicability: ww, country_accounting
- Country or group of countries (if applicable): belux, china, france, italy, lam, nam,uk_ie, bulgaria, dach, netherlands, iberia, poland, latvia, australia, india, japan, south_korea, thailand, singapore, new_zealand, emea_transversal, apac_transversal
- Unit and Domain according to the [List of labels to be used in the Finance Service Line space](#)
 - E.g. 1: WW Operation in Financial Accounting under domain "Central Finance Processes & Compliance":
 - Labels to be used: **ww, financial_accounting, central_fin_proc_compliance**
 - E.g. 2: France Operation in Financial Accounting:
 - Labels to be used: **country_accounting, france, financial_accounting**
(for country operations, the Domain is always country_accounting)

3. Fill in all fields as described above

4. Name the title of each section using OPD methodology naming convention - **Infinitive verb without the "to", mainly action verb...something) -" I do something..."**

5. Once the description of the operation is completed, ensure it is approved and published by launching the [SBS-Finance approval workflow](#)

Domain: SU Financial Accounting / Central Finance Processes & Compliance

Responsibility area: Ensure figures reporting

Table of contents

- [Tasks to be completed when documenting an operation \(from creation to publication\)](#)
- [1. Enter the Title of the operation / page](#)
- [2. Add the following Labels:](#)
 - [Scope of applicability: ww, country_accounting](#)
 - [Country or group of countries \(if applicable\): belux, china, france, italy, lam, nam,uk_ie, bulgaria, dach, netherlands, iberia, poland, latvia, australia, india, japan, south_korea, thailand, singapore, new_zealand, emea_transversal, apac_transversal](#)
 - [Unit and Domain according to the List of labels to be used in the Finance Service Line space](#)
- [3. Fill in all fields as described above](#)
- [4. Name the title of each section using OPD methodology naming convention - Infinitive verb without the "to", mainly action verb...something\) -" I do something..."](#)
- [5. Once the description of the operation is completed, ensure it is approved and published by launching the SBS-Finance approval workflow](#)
- [Table of contents](#)
- [1. Objective and Scope](#)
 - [1.1. Objective of this Operation](#)
 - [1.2. Scope](#)
- [2. Definitions](#)
- [3. Task description](#)
- [3.1 I identify the relevant transactions while handling BFC interfaces](#)

Scope



ERP



Frequency



References

ZZF_BFC_COLLECTIVE
ZZF_BFC_CONVERSION
ZZF_BFC_TRANSFER
ZZF_BFC_LIST
ZZF_BFC_FI_FLOW_AN
ZZF_BFC_FI_FLOW_VA
ZZF_GL_BFC_OVERVIEW
ZZF_BFC_BS_AA_LIST
ZZF_BFC_CUSTOMIZING

Forms

Attachments

I identify the SAP reports and matching information in BFC Interface << I identify the relevant transactions while handling BFC interfaces >> I identify the differences between the BFC interfaces from PF2/PI2 and WP2 systems

1. Objective and Scope

1.1. Objective of this Operation

The goal of this operation is to have all the necessary configurations in the BFC related tables and sets correctly updated, in order to have the SAP /BFC interface working properly.

1.2. Scope

The scope of this operation is a worldwide scope, for all Entities using PF2, PI2 and WP2 systems and accounting systems.

2. Definitions

See [Finance Glossary](#)

3. Task description

3.1 I identify the relevant transactions while handling BFC interfaces

From the user's point of view:

ZZF_BFC_COLLECTIVE – To extract data from SAP into the tables

ZZF_BFC_COLLECTIVE – To extract data from SAP into the tables

Here you can find the **origin** of the information:

Y - A/P line items;

X - A/R line items;

B - GL Balance;

V - GL line item;

W - GL line items special flows;

M - GL balance assets w/o AA

N - GL item assets w/o AA

T - AA Assets

A - AA shares

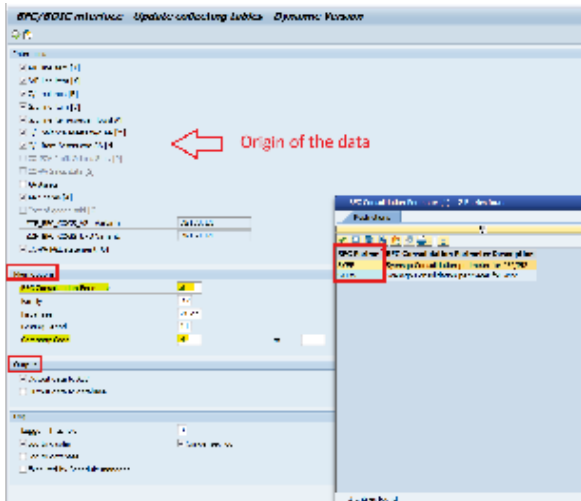
O - COPA P&L statement (in PF2 case)

Main options (depending on the need on perimeter, family fiscal year, month and company code)

Output

Output data to ALV - just to be visualized; WITHOUT uploading the results in table "ZZF_BFC_XXXX"

Output data to database - to have the outcome integrated in the database - upload the data directly to table "ZZF_BFC_XXXX".



ZZF_BFC_CONVERSION – to control origin extraction, convert data to value and format for BFC tool and post rounding differences;

ZZF_BFC_CONVERSION – to control origin extraction, convert data to value and format for BFC tool and post rounding differences;

Main options

The same options should be used as in ZZF_BFC_COLLECTIVE

Options

Step 1 - Control

Step 2 - Conversions (selected automatically)

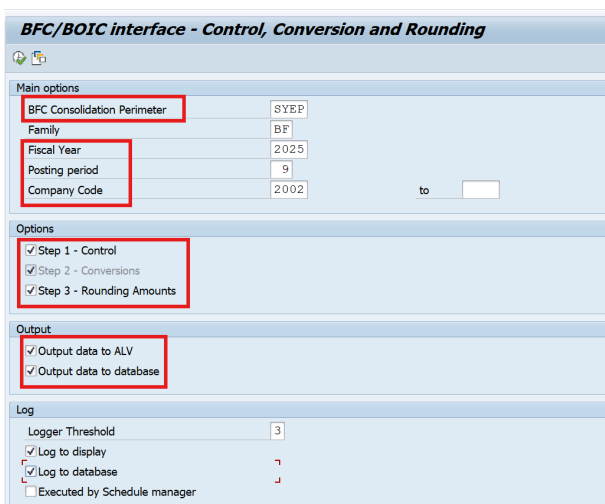
Step 3 - Rounding amounts

Every time ZZF_BFC_COLLECTIVE is run, this transaction must be run too. ZZF_BFC_CONVERSION must be run after ZZF_BFC_COLLECTIVE and before ZZF_BFC_TRANSFER.

Additionally, inside the transaction you will be able to display the columns that were converted:

Green = Data transformed;

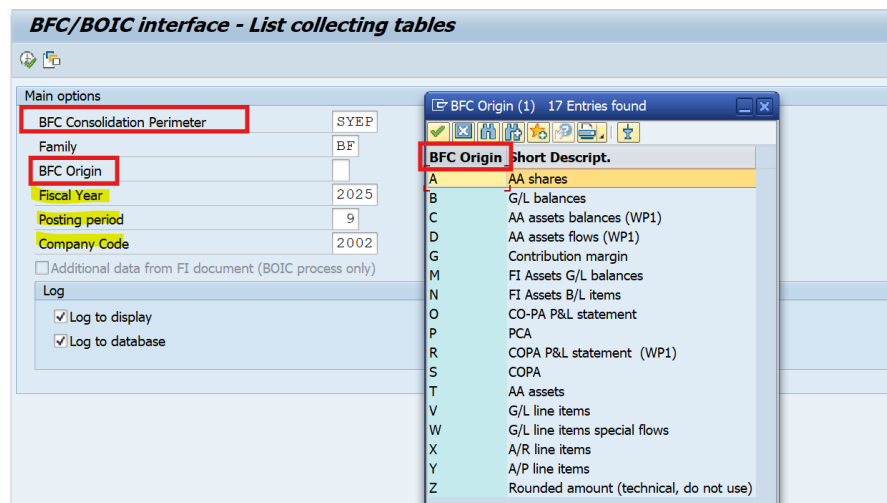
Also the conversion time is displayed.



ZZF_BFC_LIST – To display all data currently in the tables

You can select the origin you need. To ease the search in case of need, here are some guidelines on how to find the figures through SAP transactions:

- Y - A/P line items; - FBL1N (and FBL3N for BS manual accounts)
- X - A/R line items; - FBL5N (and FBL3N for BS manual accounts)
- B - GL Balance - FS10N
- C - AA assets balances (WP2) - executed via transaction AA BFC program
- D - AA assets flows (WP2) - - executed via transaction AA BFC program
- R - COPA P&L statement (WP2) - executed via transaction COPA BFC program
- V - GL line item; FBL3N
- W - GL line items special flows; FBL3N
- M - GL balance assets w/o AA FBL3N
- N - GL item assets w/o AA FBL3N
- T - AA Assets FBL3N
- A - AA shares AR02
- O - COPA P&L statement (in PF2 case) . KE30 or KE24
- P - PCA - origin P is no longer used (confirmed)



ZZF_BFC_TRANSFER – To generate the file to be uploaded into BFC

ZZF_BFC_TRANSFER – To generate the file to be uploaded into BFC

This transaction is used to generate a ".CSV" file with the data previously extracted, to be uploaded into BFC interface.

You can make Multi-Company transfers by selecting "several companies in one file" and also restrict the headings.

The document will be generated with extension ".CSV".

Therefore, in case you want to edit this file, you should do it with ".txt" format.

BFC flows variations

Data Selection

Year of flow F00: 2025
 Period of flow F00: 1
 Year of flow F99: 2025
 Period of flow F99: 1
 Company Code: 2002 to []
 Set of Accounts: [] to []

Flow from Transaction Type
 Flow from Assignment

ALV list at Account level
 ALV list at Business area level

Additional selection
 Flows of ALV List: [] to []

Log Options
 Log to Display
 Log to Database
 Condensed Log

BFC flow variances

Transaction types by flow

| CoCode | Currency | SetAccount | Account | Name | Bus. Area | Bus.area | F00(2025/01) | F35 (PROVI) | F99(2025/01) | FLOW_VARIA | FLOW_CONTR | ACCT_2_SET |
|--------|----------|------------|------------|-----------------------------------|-----------|----------|----------------|-------------|----------------|------------|------------|------------|
| EUR | | | | | | | 17.548.440,93- | 779.097,18 | 16.769.343,75- | 779.097,18 | | 0,00 |
| 2002 | EUR | ZFC-L45800 | 4004100000 | Provision for restructuring costs | | | 17.548.440,93- | 779.097,18 | 16.769.343,75- | 779.097,18 | | 0,00 NO |

ZZF_GL_BFC_OVERVIEW - GL/BFC Headings Assig

This transaction retrieves the GL account assignment to the BFC heading and the opposite, as well as other relevant info:

- Set name;
- PL or BS account;
- Personnel costs (statistical headings);
- Text in EN and additional language;
- COCA deletion, blockage;

GL/BFC Headings Assign. Overview

Account selection

Company code: 2002 Display Accounts not yet created for company code
 Additional language: FR

G/L Account to []
 G/L Account Set to []

Display ARA related data
 Account Item: [] to []

Output options
 Export XLS file

You can also check the GL accounts created at company code level, as well as display accounts that haven't been replicated yet.

The green lines mean that the GL account is created at company code level.

GL/BFC Headings Assign. Overview

| G/L Account | GL Long Text(EN) | CoCode | Name | Set Name | Heading | Description | P&L or BS | CoA Del | CoA block | CC Del | CC block | Acct Group | Cost elem. | P/M Per. | Costs | S.Text(EN) | S.Text(FR) | GL Long Text (FR) | BFC Txt | Details |
|-------------|-----------------------------------|--------|-----------------------|----------|-----------|------------------------------|-----------|---------|-----------|--------|----------|------------|------------|----------|-------|------------------|---------------|---|---------|---------|
| 4004100000 | Provision for restructuring costs | 2002 | SYENSQO SA ZFC-L45800 | L45800 | ST | provisions for restructuring | BS | | | | | BILA | BAL | | | Prov restr costs | Prov fr restr | Provision pour frais de restructuration | | |
| 4004100000 | Provision for restructuring costs | 2002 | SYENSQO SA ZFC-X0810 | X0810 | Restruct. | Employee expenses | ST LT | BS | | | | BILA | X0810 | | | Prov restr costs | Prov fr restr | Provision pour frais de restructuration | | |

ZZF_BFC_CUSTOMIZING

This transaction is like a cockpit for the BFC Interfaces. It is defined

into two big clusters of Maintenance:

1st cluster: **Main** - it is related to tables that are used in the Interface process; these tables are also used for other purposes;

2nd cluster: **BFC Main** - it is related to the maintenance of the BFC specific tables like the perimeter, flows, sites, divisions, regions by country, profit centers and markets;

In the 2nd cluster, there is also a split between what is

- BFC process itself;
- BFC families
- Conversion

The ZZF_BFC_CUSTOMIZING is common to PF2 and WP2 systems.

Display View "Main : Company code mapping (ZZR_T001_MAP)": Overview

| Dialog Structure | Main : Company code mapping (ZZR_T001_MAP) | | | | |
|---|--|--------------------------|-----------|------|---------------------------|
| | PRS CoCode | PRS Company Code Name | Landscape | SCCd | Source Company Code Name |
| • Main : Company code mapping (ZZR_T001_MAP) | 0192 | SOLVAY INTEROX (AU) *D* | ERPRCS | 0192 | ZZZZ ex SOLVAY INTEROX (A |
| • Main : BFC Company codes (ZZF_BFC_COMPANIE) | 0197 | SOC ARCHIVAGE MOD *D* | ERPRCS | 0197 | ZZZZ ex SAM Société d'Arc |
| • Main : Consolidation methods (ZZF_CONSO_METHOD) | 0560 | BUTACHIMIE *D* | ERPRCS | ZFR9 | ZZZZ ex BUTACHIMIE |
| • Main : Companies param. (part of ZZR_T001_MGT) | 0849 | CIM - CIE IND & MIN *D* | ERPRCS | 0849 | ZZZZ ex CIE INDUSTRIELLE |
| • Main : Report.: Div. - Except (ZZR_REPO_DIV_EXC) | 1044 | COGENERA CHALAMPE *D* | ERPRCS | 1044 | ZZZZ ex COGENERA CHALAMPE |
| • BFC - Main : Consolidation perimeter (CONS_PER) | 1688 | GEPEIF | ERPRCS | 1688 | GEPEIF |
| • BFC : Partners by Consolid perimeter (CONS_MGT) | 1892 | GIE CHIMIE SALINDRES *D* | ERPRCS | 1892 | ZZZZ ex GIE CHIMIE SALIND |
| • BFC - Main : Flows (FLOW) | 1900 | GIE OSIRIS *D* | ERPRCS | 1900 | ZZZZ ex GIE OSIRIS |
| • BFC - Main : Sites (SITE) | 1990 | HEXAGAS *D* | ERPRCS | 1990 | ZZZZ ex Hexagas |
| • BFC - Main : Det. Divis. partner (DIVPART) | 2955 | ORBEO *D* | ERPRCS | 2955 | ZZZZ ex Orbeo SAS |
| • BFC - Main : Region by country (COUNTRY) | 3865 | SOLVAY ENERGY S FR *D* | ERPRCS | 3865 | ZZZZ ex SOLVAY ENERGY S F |
| • BFC - Main : Valid profit centers (PCEN_RUL) | 3899 | DAEHAN *D* | ERPRCS | 3899 | ZZZZ ex DAEHAN |
| • BFC - Main : Market (D_MARK) | 3919 | SYENSQO PARTICIP. FR | ERPRCS | 3919 | SYENSQO PARTICIP. FR |
| • BFC - Process (PROCESS) | 3944 | SYENSQO ENERGY GHG | ERPRCS | 3944 | SYENSQO ENERGY GHG |
| • AA - Assets specifications (AA) | 3972 | SYENSQO FINANCE (FR) | ERPRCS | 3972 | SYENSQO FINANCE (FR) |
| • AA - Assets specific transactions (AA_TTY) | 3976 | RHODIA FINANCE *D* | ERPRCS | 3976 | ZZZZ ex Rhodia Finance |
| • Calculated headings / flows (CALCUL) | 4003 | RHOD V *D* | ERPRCS | 4003 | ZZZZ ex Rhodia V |
| • Flow by transaction type (TRA_FLOW) | 4004 | RHOD W *D* | ERPRCS | 4004 | ZZZZ ex Rhodia W |
| • Control (CONTROL) | 4274 | RHODIA OPERATIONS *D* | ERPRCS | ZFR3 | ZZZZ ex RHODIA OPERATIONS |
| • BFC - Families (FAMILY) | 5586 | RHODIA CHIMIE *D* | ERPRCS | 5586 | ZZZZ ex RHODIA CHIMIE |
| • Dimensions by scheme (SCH_DIM) | 6103 | SOLVAY FINANCIAL S *D* | ERPRCS | 6031 | ZZZZ ex SOLVAY F. SERV |
| • Headings (HEADING) | 6104 | SYENSQO HOLDING (US) | ERPRCS | 6032 | SYENSQO HOLDING (US) |
| • Set of accounts by heading (SETACCT) | 6107 | SYENSQO SPECIALIT RE | ERPRCS | 6059 | SYENSQO SPECIALITIES IND |
| • Rounding Amounts (ROUNDING) | 6108 | SYENSQO ASIA PACIFIC | ERPRCS | 6062 | SYENSQO ASIA PACIFIC Pte |
| • BFC - Conversion : Division conversion (DIV_CONV) | 6109 | SYENSQO (BANGPOO) SC | ERPRCS | 6066 | SYENSQO (BANGPOO) S CHEM |
| • BFC - Conversion : Bank conversion (BANK_CONV) | 6112 | ALAVER *D* | ERPRCS | | |
| | 6114 | SOLVAY SP CHEM JAPAN *D* | ERPRCS | 6110 | ZZZZ ex SOLVAY SP CHEM JA |

Display View "Main : Company code mapping"






Dialog Structure

- * Main : Company code mapping (ZZR_T001_MAP)
- * Main : BFC Company codes (ZZF_BFC_COMPANIE)
- * Main : Consolidation methods (ZZF_CONSO_METHOD)
- * Main : Companies param. (part of ZZF_T001_MGT)
- * Main : Report.: Div. - Except (ZZR_REPO_DIV_EXC)
- * BFC - Main : Consolidation perimeter (CONS_PER)
- * BFC : Partners by Consolid perimeter (CONS_MGT)
- * BFC - Main : Flows (FLOW)
- * BFC - Main : Sites (SITE)
- * BFC - Main : Det. Divis. partner (DIVPART)
- * BFC - Main : Region by country (COUNTRY)
- * BFC - Main : Valid profit centers (PCEN_RUL)
- * BFC - Main: Market (D_MARK)
- ▼ BFC - Process (PROCESS)
 - * AA - Assets specifications (AA)
 - * AA - Assets specific transactions (AA_TTY)
 - * Calculated headings / flows (CALCUL)
 - * Flow by transaction type (TRA_FLOW)
 - * Control (CONTROL)
- ▼ BFC - Families (FAMILY)
 - * Dimensions by scheme (SCH_DIM)
 - * Headings (HEADING)
 - * Set of accounts by heading (SETACCT)
 - * Rounding Amounts (ROUNDING)
- * BFC - Conversion : Division conversion (DIV_CONV)
- * BFC - Conversion : Bank conversion (BANK_CONV)

Workflow history


This view shows the 5 most recent entries. The complete workflow log is available from the 'Document Activity' menu item.

| Dec 09, 2025 | Actor | Type | Activity | Version |
|--------------|---|-------|--|---------|
| Published |  CRISTINA VALA SERODIO, ines | Edit | updated the page at 4:30 pm | |
| | | State | changed state to Published at 3:30 pm | v12 |
| Draft |  CRISTINA VALA SERODIO, ines | State | gave <i>Approvers</i> approval at 3:30 pm | |
| | | State | changed state to Draft at 3:30 pm | v12 |
| Feb 11, 2025 | | | | |
| Published |  Maciel, Teresa | Edit | updated the page at 10:16 am | |
| | | State | changed state to Published at 9:35 am | v11 |
| Draft | | State | gave <i>Approvers</i> approval at 9:35 am | |



Maciel, Teresa

State

unassigned  Barbier, Delphine from approval *Approvers* at 9:35 am

Aug 29, 2024



Maciel, Teresa

Edit

updated the page at 10:47 am
