

2. Security Management

- 1. Security Management Logic
 - 1.1 Role
 - 1.2 Scope
- 2. Security by GBU
- 3. Examples
 - 3.1 Example #1 - Simple
 - 3.2 Example #2 - Complex
- 4. Useful documentation
- EN MODELING Demand Planning 2018 (3).pdf

1. Security Management Logic

Security Management is split by Role and Scope depending on the object you want to give users access to.

1.1 Role

- One user needs to have at least one role (but can have multiple ones).
- The role is a user group.
- The objective is to give access to Workspaces (Remote and/or Web), Models, Shortcuts.
- The list of roles by GBU has been defined and should not change frequently.
- For example: two users can be Sales Manager for one GBU - they will see the same workspaces, shortcuts, models... The process will be identical.

1.2 Scope

- One user needs to have one scope/perimeter only (in order to avoid conflict/blocking between several users.)
- The scope is a user group.
- The objective is to give access to a specific list of DFUs or any other dimension (depending on an aggregated level).
- The scope is changing frequently depending on the Commercial Team organization in SAP/GBU.
- For example: two users can be Sales Managers for one GBU but with two different scopes - they will be able to work on the same workspace at the same time on a different set of DFUs.

2. Security by GBU

The logic and best practices are to:

- Use exclusively User Groups "Role" to set-up Models security - no exception for user group scope;
- Set-up security at the highest level of the structure: set-up will be inherited at each disaggregated level;
- Apply "deny" when data is not used for this user role, by Models - never at a more detailed level (and in the opposite way, apply "Allow" when data is used for the user role).

If a business request can't follow these rules, a new user group "role" needs to be created - no exception can be applied.

As explained above, security is applied based on GBU and role. Here is the summary of GBU roles list.

GBU	Data base	Role	Scope	Model security	User profile	Type of access
AROMA PERFORMAN CE	DP1	Demand Planner	Zone		Global Planner	Remote
		Sales Rep.	Sales group code (WP1) Account Manager code (PF1)		Collabora tor	Remote (<i>Migration to web in progress</i>)
		Global Key Account Manager	GBU Ship-To Group name/code		Viewer	Remote (<i>Migration to web in progress</i>)

NOVECARE	DP3	S&OP Manager	Windows Login + set-up by Main Shipping plant / Main Production plant	U00 - Impot - IN U99 - Export - OUT x. Supersession x. Master Tables Update x. Users Scope Management y. GBU - NOVECARE z. MTP / Commercial RoadMap z. Budget	Global Planner	Remote
		Sales Manager	Sales group code (WP1) Account Manager (PF1)	U00 - Impot - IN x. Supersession x. Users Scope Management y. GBU - NOVECARE z. MTP / Commercial RoadMap z. Budget	Collaborator	Web
		Sales Assistant (CSR - Customer Service Representative)	ZI Partner code (WP1) CSS Representative code (PF1)	U00 - Impot - IN x. Supersession x. Users Scope Management y. GBU - NOVECARE z. MTP / Commercial RoadMap z. Budget	Collaborator	Web
		Global Key Account Manager	Ship-To KA name/code	U00 - Impot - IN x. Supersession x. Users Scope Management y. GBU - NOVECARE z. MTP / Commercial RoadMap z. Budget	Viewer	Web
		RMD (Regional Market Director)	Zone and BfC Market	U00 - Impot - IN x. Supersession x. Users Scope Management y. GBU - NOVECARE z. MTP / Commercial RoadMap z. Budget	Viewer	Web

		BDM (Business Development Manager)	Zone and BfC Market	U00 - Impot - IN x. Supersession x. Users Scope Management y. GBU - NOVECARE z. MTP / Commercial RoadMap z. Budget	Viewer	Web
TS	DP1	Demand Planner	BU	F01C-1. Material: Shipto@DC U00 - Import - IN x. Supersession x. Master Tables Update y. GBU - TS z. Budget z. Classification ABC z. CRM Opportunities /Quote z. Pricing management	Global Planner	Remote
		Product Manager	Material (updated manually through data field)	F01C-1. Material: Shipto@DC U00 - Import - IN x. Supersession x. Master Tables Update y. GBU - TS z. Budget z. Classification ABC z. CRM Opportunities /Quote z. Pricing management	Collaborator	Web
		Sales Employee	Sales Employee Code	F01C-1. Material: Shipto@DC U00 - Import - IN x. Supersession x. Master Tables Update y. GBU - TS z. Budget z. Classification ABC z. CRM Opportunities /Quote z. Pricing management	Collaborator	Web

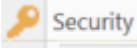
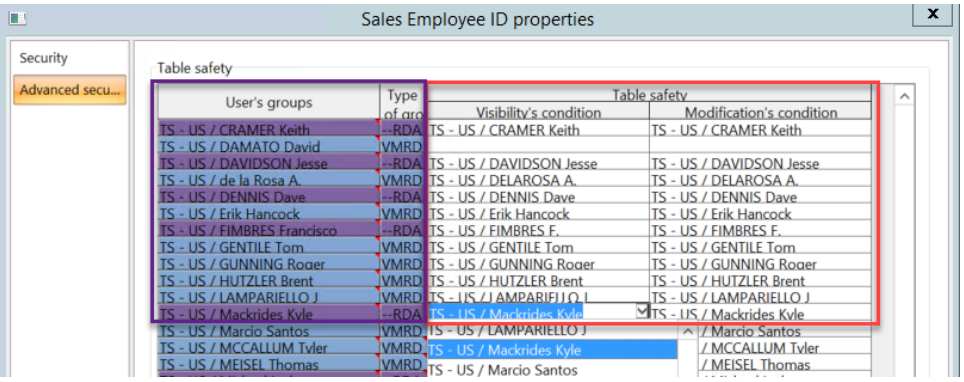
	RSD	No condition (list of Sales Rep. through users group)	F01C-1. Material: Shipto@DC U00 - Import - IN x. Supersession x. Master Tables Update y. GBU - TS z. Budget z. Classification ABC z. CRM Opportunities /Quote z. Pricing management	Collaborator	Web
	Pricing Team	Full GBU (no condition)	F01C-1. Material: Shipto@DC U00 - Import - IN x. Supersession x. Master Tables Update y. GBU - TS z. Budget z. Classification ABC z. CRM Opportunities /Quote z. Pricing management	Collaborator	Remote

3. Examples

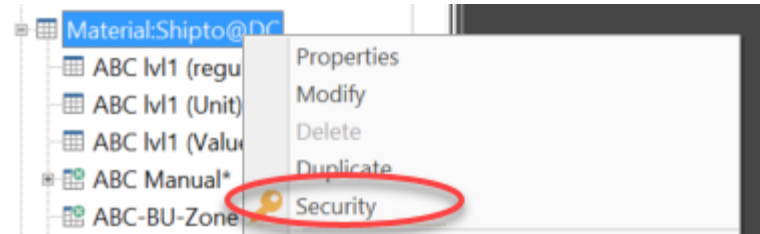
Here are some examples on concrete cases, raised by tickets through the years.

3.1 Example #1 - Simple

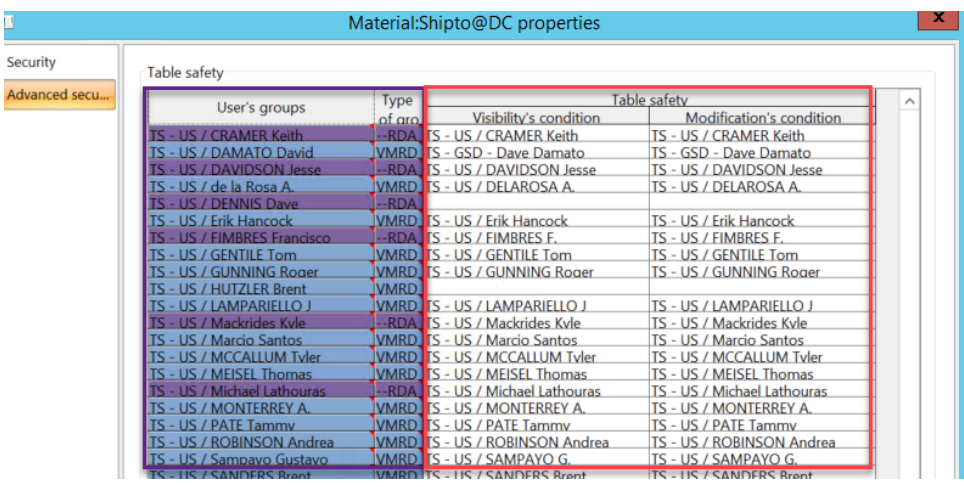
For ex: for a Sales Employee of a given GBU

#	Description	Screenshot
1	<p>right click the master table Sales Employee ID, then click Security</p>  <p>In the Advanced security tab, for each user group, associate the conditions to the corresponding user groups,</p>	

2 right click the master table Material:shipto@DC, click Security

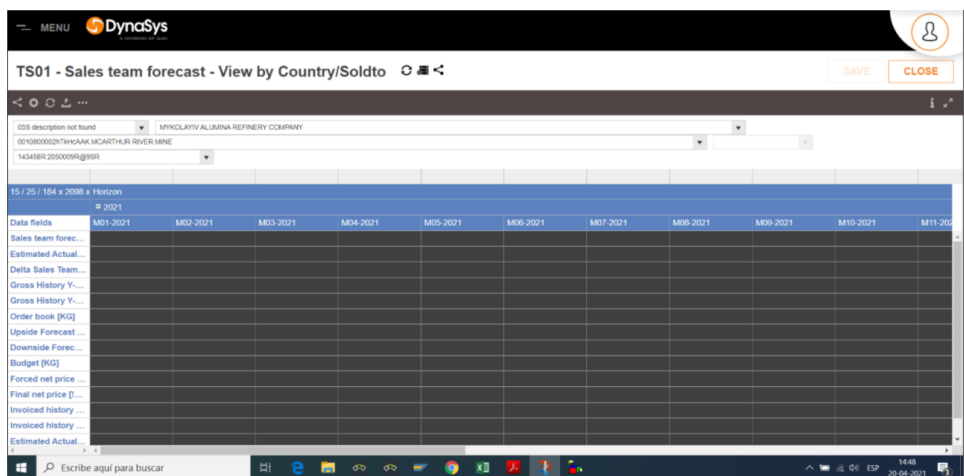


In the **Advanced security** tab, for each user group, associate the conditions to the corresponding user groups,



User's groups	Type of aro	Visibility's condition	Modification's condition
TS - US / CRAMER Keith	--RDA	TS - US / CRAMER Keith	TS - US / CRAMER Keith
TS - US / DAMATO David	VMRD	TS - GSD - Dave Damato	TS - GSD - Dave Damato
TS - US / DAVIDSON Jesse	--RDA	TS - US / DAVIDSON Jesse	TS - US / DAVIDSON Jesse
TS - US / de la Rosa A.	VMRD	TS - US / DELAROSA A.	TS - US / DELAROSA A.
TS - US / DENNIS Dave	--RDA		
TS - US / Erik Hancock	VMRD	TS - US / Erik Hancock	TS - US / Erik Hancock
TS - US / FIMBRES Francisco	--RDA	TS - US / FIMBRES F.	TS - US / FIMBRES F.
TS - US / GENTILE Tom	VMRD	TS - US / GENTILE Tom	TS - US / GENTILE Tom
TS - US / GUNNING Rooer	VMRD	TS - US / GUNNING Rooer	TS - US / GUNNING Rooer
TS - US / HUTZLER Brent	VMRD		
TS - US / LAMPARIELLO J	VMRD	TS - US / LAMPARIELLO J	TS - US / LAMPARIELLO J
TS - US / Mackrides Kvlle	--RDA	TS - US / Mackrides Kvlle	TS - US / Mackrides Kvlle
TS - US / Marcio Santos	VMRD	TS - US / Marcio Santos	TS - US / Marcio Santos
TS - US / MCCALLUM Tyler	VMRD	TS - US / MCCALLUM Tyler	TS - US / MCCALLUM Tyler
TS - US / MEISEL Thomas	VMRD	TS - US / MEISEL Thomas	TS - US / MEISEL Thomas
TS - US / Michael Lathouras	--RDA	TS - US / Michael Lathouras	TS - US / Michael Lathouras
TS - US / MONTERREY A.	VMRD	TS - US / MONTERREY A.	TS - US / MONTERREY A.
TS - US / PATE Tammv	VMRD	TS - US / PATE Tammv	TS - US / PATE Tammv
TS - US / ROBINSON Andrea	VMRD	TS - US / ROBINSON Andrea	TS - US / ROBINSON Andrea
TS - US / Sampayo Gustavo	VMRD	TS - US / SAMPAYO G.	TS - US / SAMPAYO G.
TS - US / SANDERS Brent	VMRD	TS - US / SANDERS Brent	TS - US / SANDERS Brent

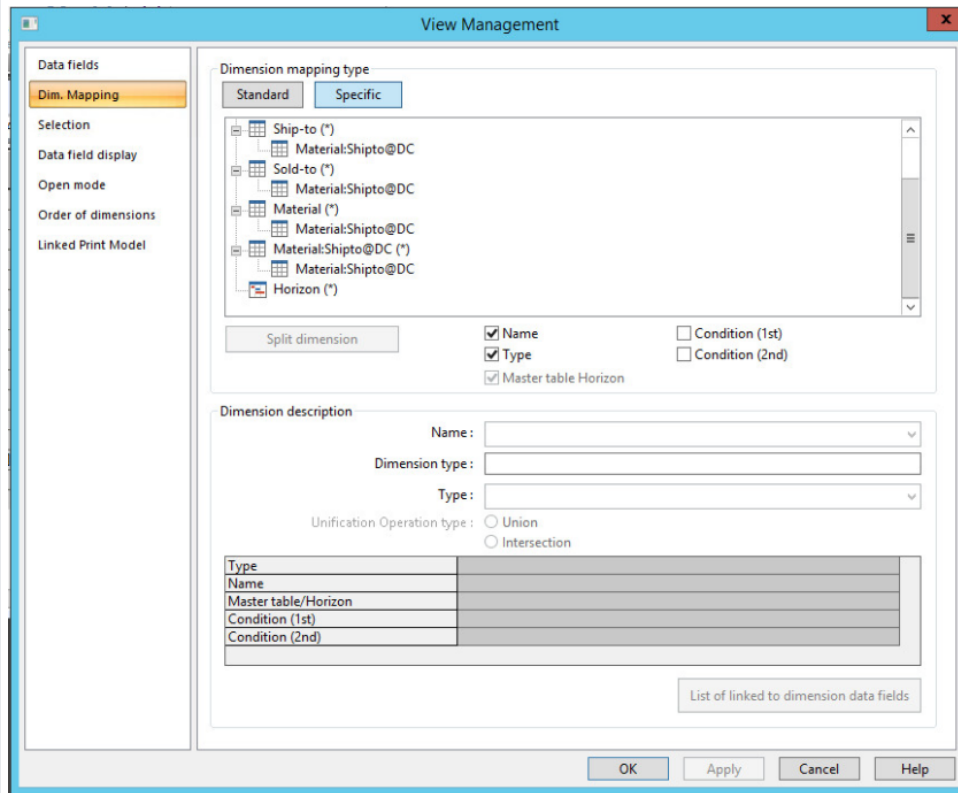
3.2 Example #2 - Complex

#	Description	Screenshot
Problem Reporting!		
1	user SANTOSMA all black view while open the work space,	
Trouble Shooting!		

2

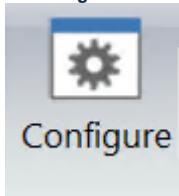
The grid view has a split on dimension Material:Shipto@DC into

- Country
- Ship-To
- Sold-To
- **Material**
- and the original data field dimension, Material: Shipto@DC

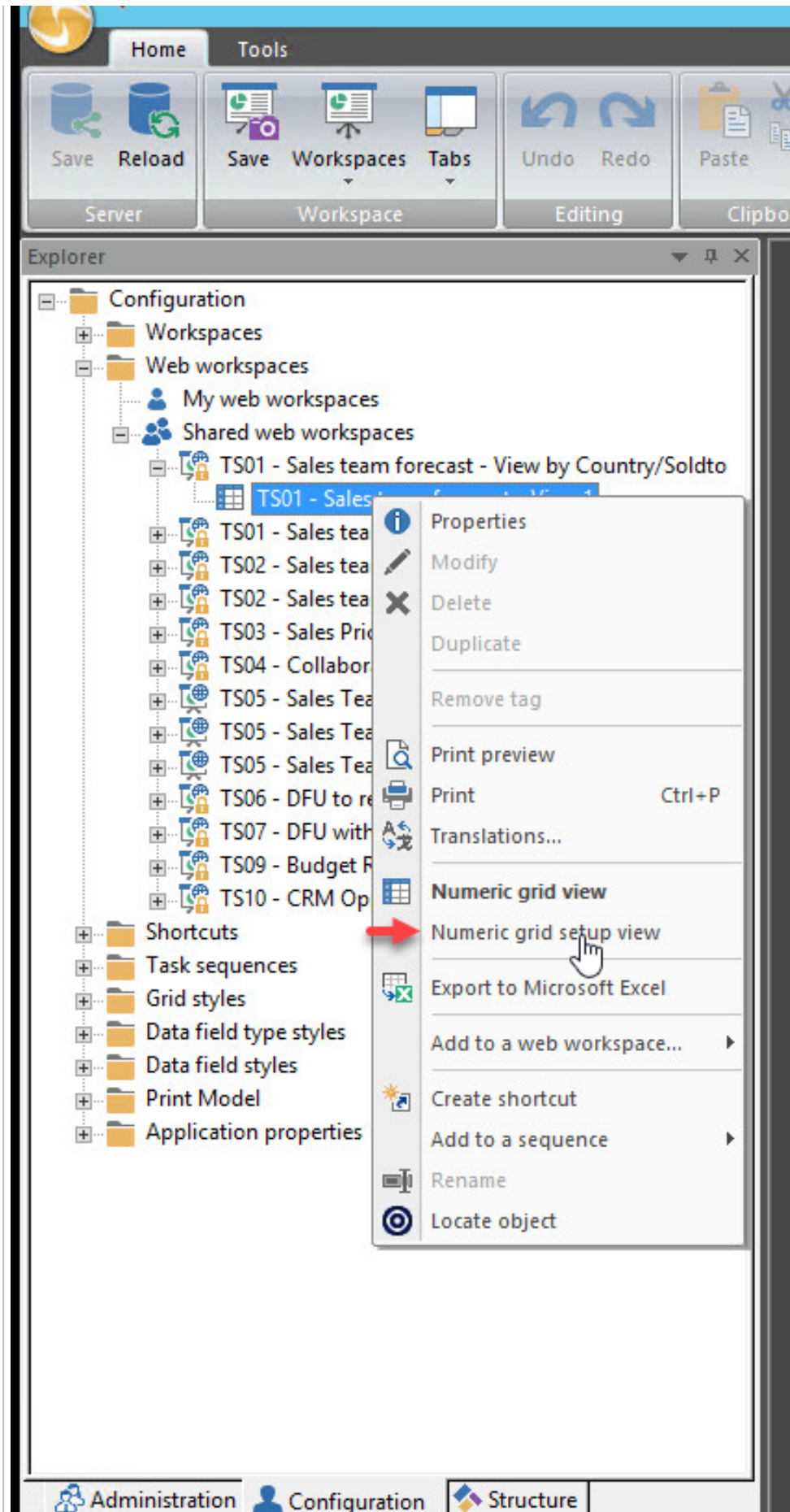


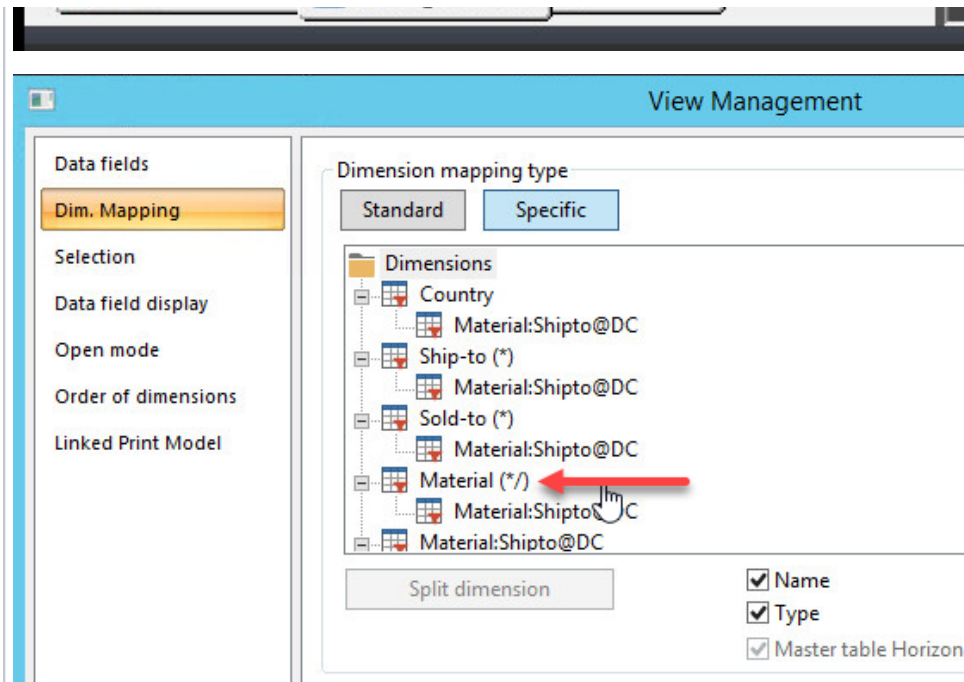
3

If you connect as the user into the rich client and right click => **Configure**

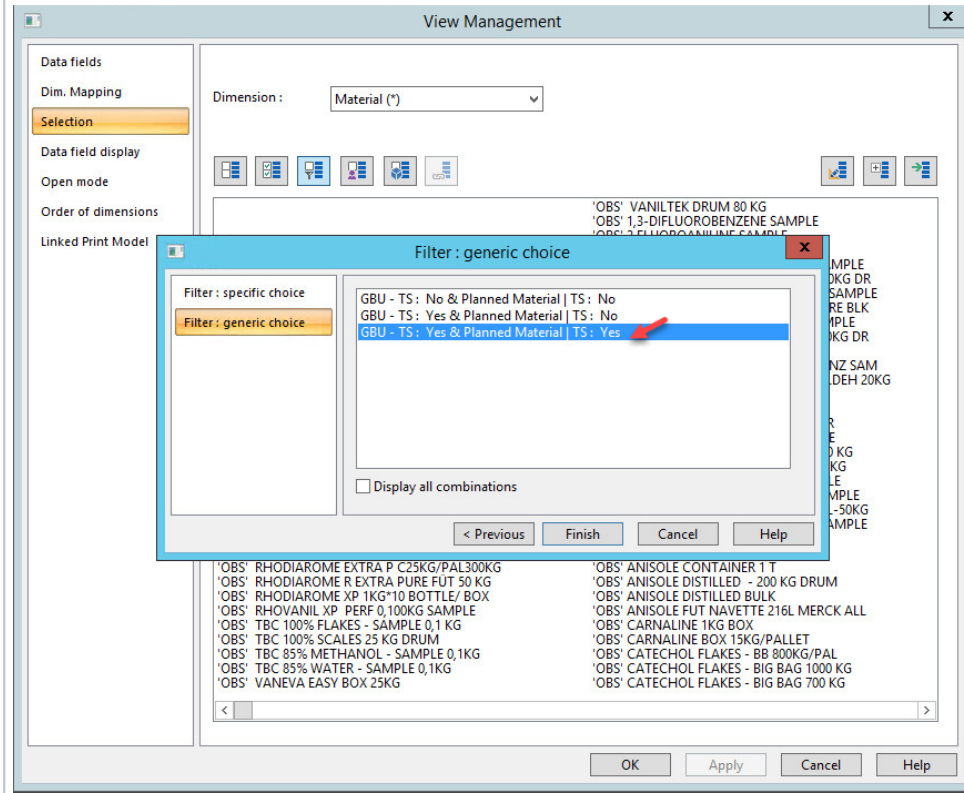


on the view, you can check which one is empty (the one with /) :





4 The **problem** is on Material : the view has a filter on Material, on condition 'GBU - TS: Yes & Planned Material | TS : Yes' :



5 User belongs to those groups :

Name	Description	Tags	Modified	T:
TS - CL / ACEVEDO David			05/12/2021 9:55:51 AM	V
TS - CL / BECERRA Jose			05/12/2021 9:55:52 AM	V
TS - CL / CARTES BORIS			05/12/2021 9:55:53 AM	V
TS - CL / GONZALEZ N.			05/12/2021 9:55:51 AM	V
TS - CL / GONZALO Rivera	TS - GSD - GONZALO Rivera		05/12/2021 9:55:52 AM	V
TS - CL / MORALES M.			05/12/2021 9:55:51 AM	V
TS - CL / PALACIOS F.			05/12/2021 9:55:51 AM	V
TS - CL / RUBIO Ricardo			05/12/2021 9:55:51 AM	V
TS - CL / TORRES Sergio			05/12/2021 9:55:51 AM	V
TS - CL / ZAPATA Julio	TS - CL / ZAPATA Julio		05/12/2021 9:55:53 AM	R
TS - ES / Alexis Campos			05/12/2021 9:55:52 AM	V
TS - MX / Guerrero Jesus			05/21/2021 9:11:49 AM	V
TS - MX / TORRES Hector			05/21/2021 9:11:49 AM	V
TS - PE / BASURCO Javier			05/12/2021 9:55:52 AM	V
TS - PE / MAYTA Orlando			05/12/2021 9:55:53 AM	V
TS - PE / RICCE Edgar			05/12/2021 9:55:52 AM	V
TS - PE / RUIRE Corina			05/12/2021 9:55:52 AM	V
TS - PE / SANCHEZ Juan C.			05/12/2021 9:55:52 AM	V
TS - Role Sales Manager	User group for TS Sales rep		05/21/2021 9:11:49 AM	V
TS - US / Marcio Santos			05/12/2021 9:55:51 AM	V

6 The only group having a security configured on the master table 'Material' is TS - US / Marcio Santos, with the visibility condition 'GBU - SA&D'

Finally, a right click => hierarchy view (with a super user account) on the master table 'Material' shows that there is no intersection between the combination of the conditions used to filter the grid and the condition of visibility :

The image shows a tree view of data objects in a software application. The tree structure is as follows:

- <Variability>
- + _Misc
- + _Tech
- BFRs
- + LC
- Material:Shipto@DC
 - ABC M1 (regular)
 - ABC M1 (Unit)
 - ABC M1
 - + ABC Ma
 - + ABC-BU
 - + Acc Ma
 - + Acc Ma
 - + Account
 - + BFC Ma
 - + BU-Zon
 - + Country
 - + Country
 - CRM M
 - + CRM Op
 - CRM Op
 - CRM Op
 - CRM Pr
 - CRM Sta
 - + Custom
 - + Custom
 - + DC-Rep
 - + Distribu
 - + Division
 - + Key Cod
 - + MacroR
 - Manual
 - Marketi
 - Material

A context menu is open over the 'Material:Shipto@DC' folder, listing the following actions:

- Properties
- Modify
- Delete
- Duplicate
- Security
- Remove tag
- List
- Translations...
- New
 - New condition
 - New unit of measure conversion
- Grid View
- Unit of measure conversion grid view
- Hierarchic view
- Clean records
- Clean records (quiet)
- Create shortcut
- Add to a sequence
- Rename

Master tables choice

Master tables choice

Nodes information

- BU-Zone
- CRM Material:Shipto@DC
- Customer SubGroup_PA
- DC-Reporting region
- Division@DC
- MacroRegion x CustomerGroup
- Marketing Market
- Material
- Material.
- Material: Subgroup - Minizone
- Material:Shipto@BU
- Material:Soldto@DC
- Material_PE
- Material_SD
- Pack type:pack size
- Packaging_LA
- Product Flexibility
- Product Type-Acc Mgr:Ship to

< Previous Next > Cancel Help

Nodes information

Master tables choice

Nodes information

Display master tables

Hide unused records

Nodes Option

Tree Node: Material Master table Type: Item

Record display

Code

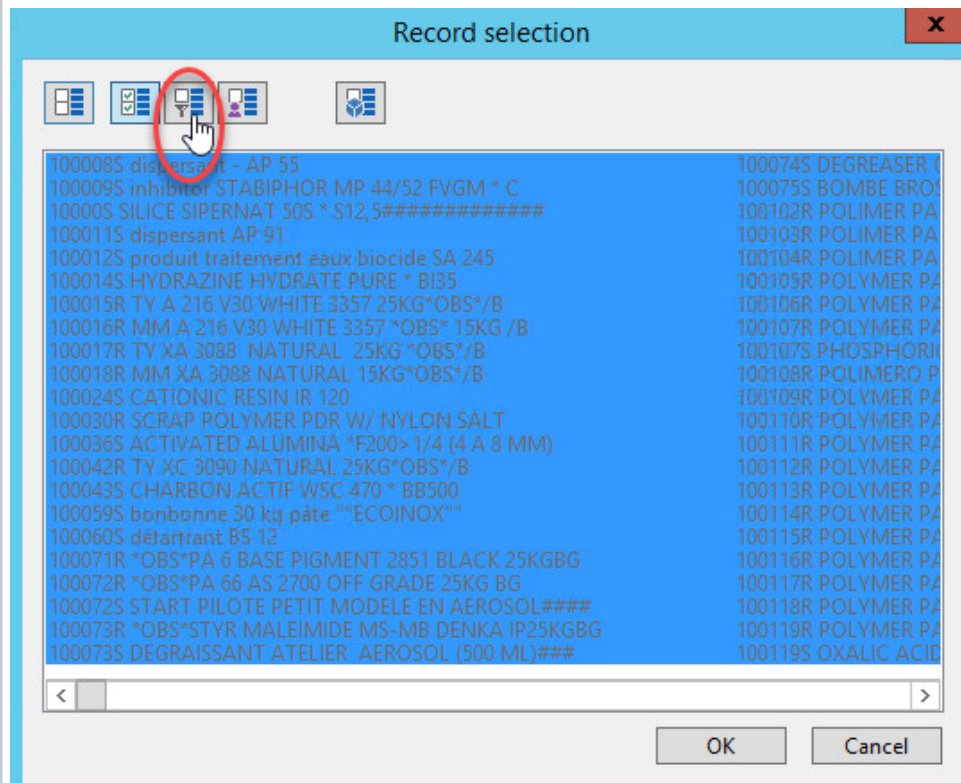
Name

Short name

Records selection

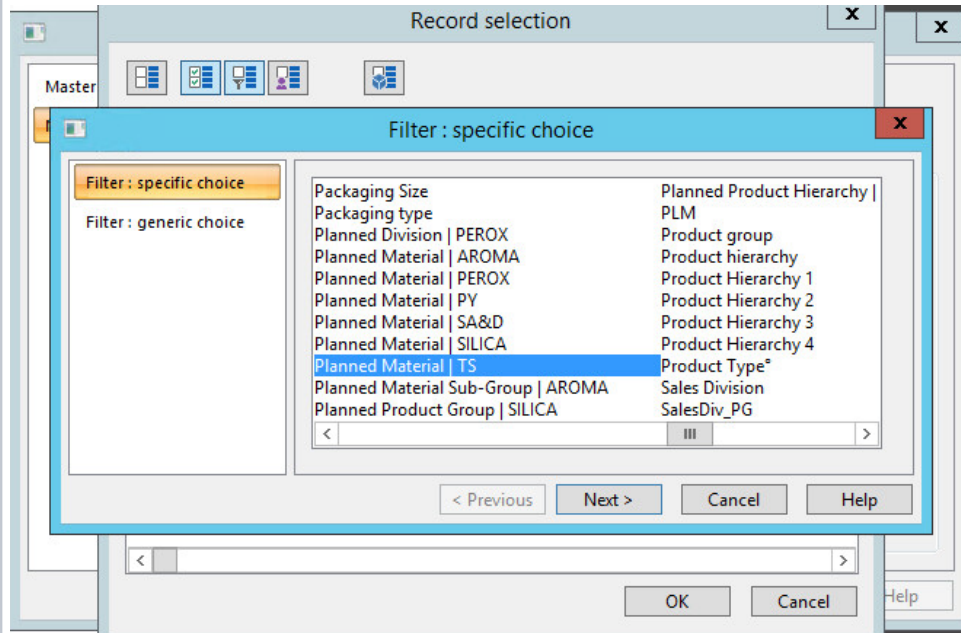
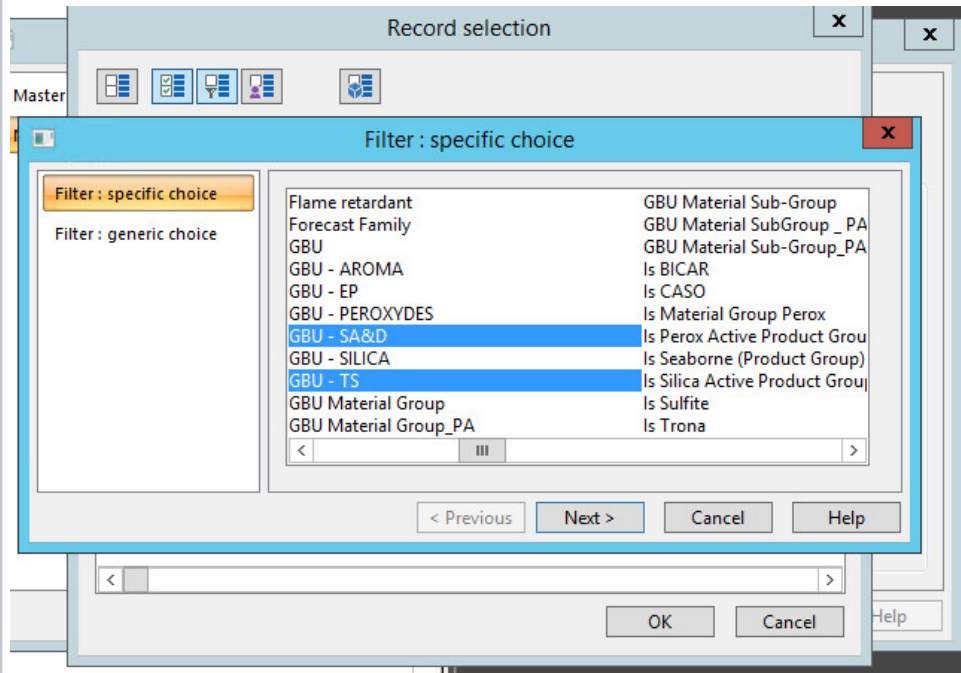
Level name: Material

< Previous Finish Cancel Help

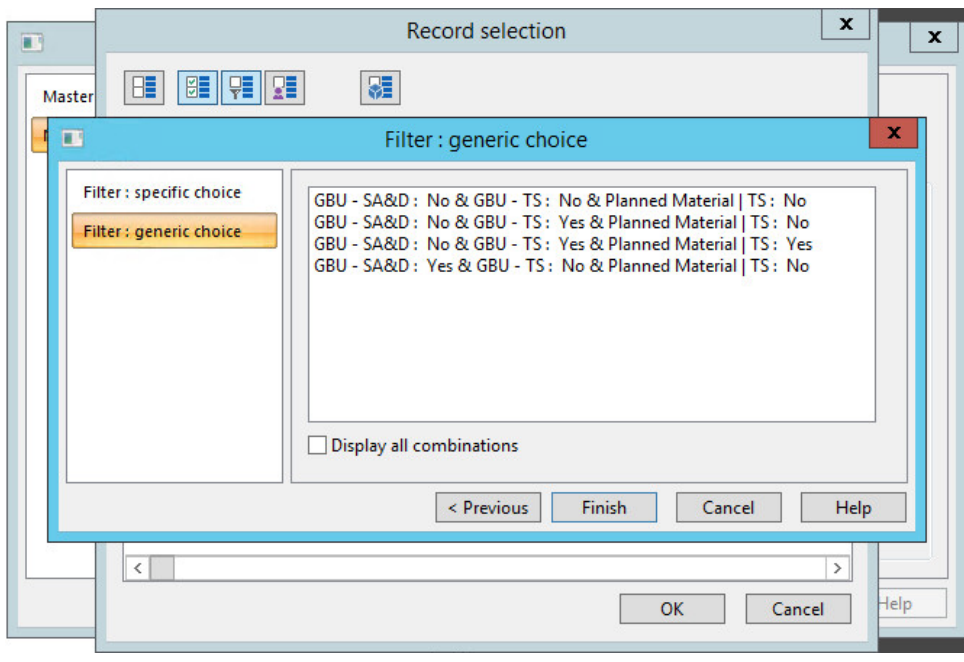


7

select here the 3 conditions (pressing control key allows to multiple select them) :



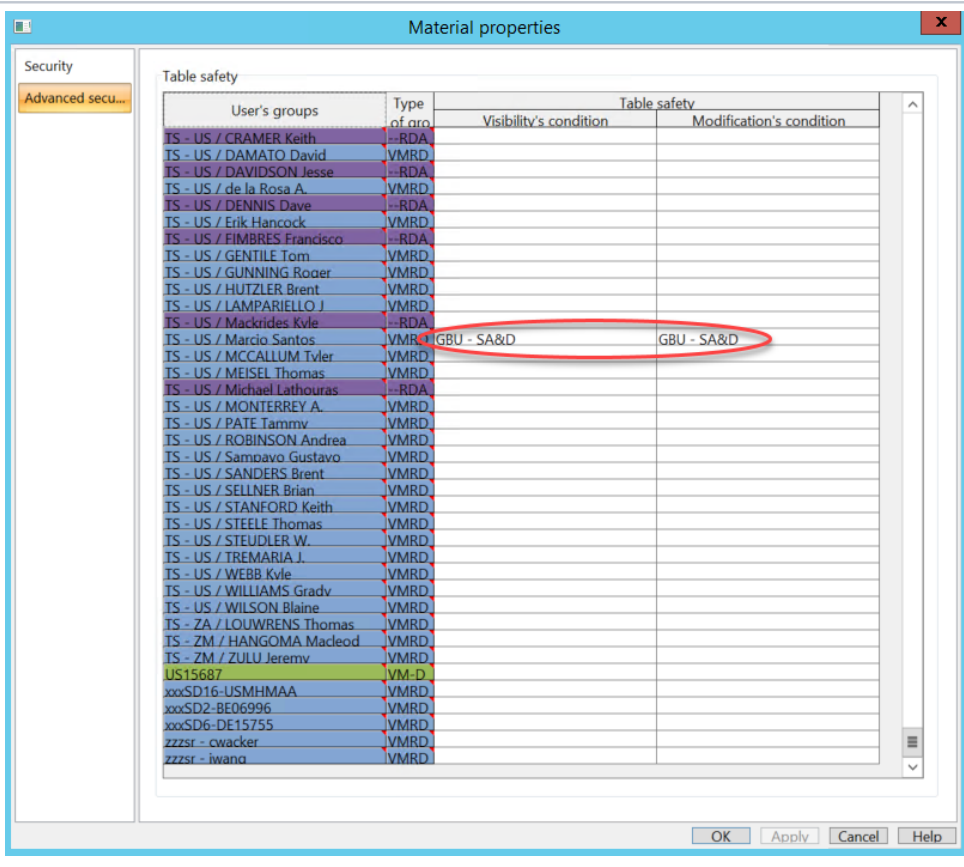
8 And we can see that no material fulfills the 3 conditions :



Fix!

9 The problem is on **Material** : the view has a filter on Material, on condition '**GBU - TS: Yes & Planned Material | TS : Yes**' : The only group having a security configured on the master table 'Material' is TS - US / Marcio Santos, with the visibility condition '**GBU - SA&D**'

To **remove** the condition '**GBU - SA&D**' in Material table associated with user group TS - US / Marcio Santos



4. Useful documentation

EN MODELING Demand Planning 2018 (3).pdf

