

I settle Process Orders (PP orders)

Process: Monthly costing and cost accounting closing

Responsibility area: Perform Costing Monthly Closing

- For **calculation of variances and posting**, don't forget that you have to run always the transactions in processing mode (**ZWFA76**, **KKS1**, **KKS2**, **ZWFA78**, **CO88** and **KO88**). If you ran it before in test mode, you will have to run it again in processing mode.
- For **WIP** (**ZWFAA07**, **KKAO** and **KKAX**) you have to run the transaction only in test mode, NOT in processing mode.
- For the **check of the process orders balance** (**KOC4**), it is preferable to launch it in background in order not to reduce the SAP performance for the other SAP users.
- The **error messages** that can appear when running each step can be checked in the spool log. Each one has a specific treatment, but only the ones generating inconsistencies require analysis. If necessary, Regional Cost Accounting FtO will provide additional support to reach a solution.

Scope

WW WP2

Frequency

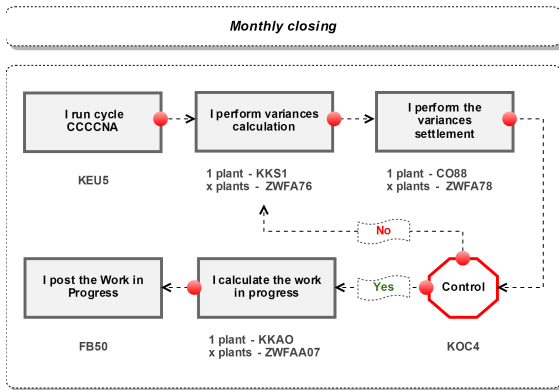
M

References

- [OP.008](#)
- [OP.008](#)

Attachments

N/A



xx << I settle Process Orders (PP orders) >> xx

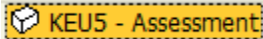
Guideline

Before start processing the process orders costs you have to run cycle **CCCNA** in real mode in order to settle the "process order variances statistics" from cost center **CCCC-9201** (In some cases there are cost centers that start with **PPPP-9201** for historical reasons). At this stage only small amounts should be on cost center (rounding amounts). In case of high amounts in the balance should be analysed the reason before doing the settlement. For threshold please consider 3K€.

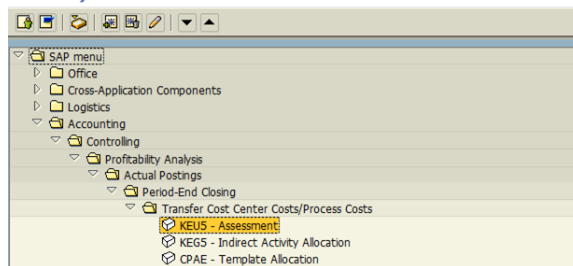
STEP 1

Start the transaction using the menu path or transaction code **KEU5**

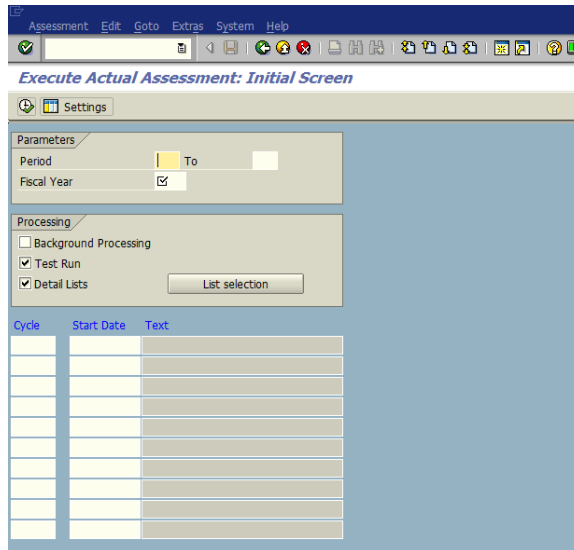
Double-click



SAP Easy Access



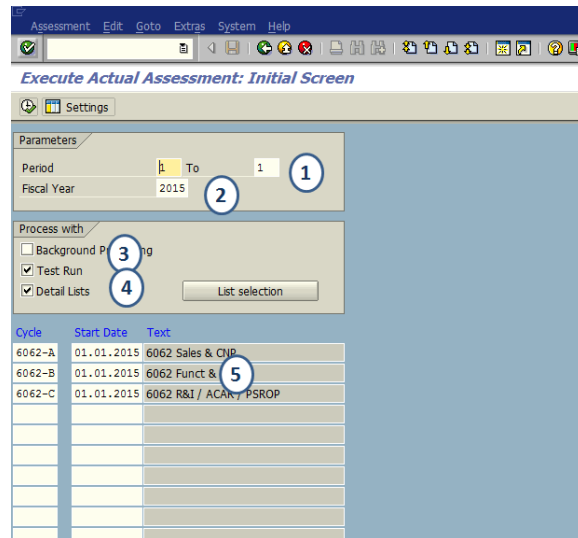
Execute Actual Assessment: Initial Screen



STEP 2

On the Execute Actual Assessment screen, make the following entries:

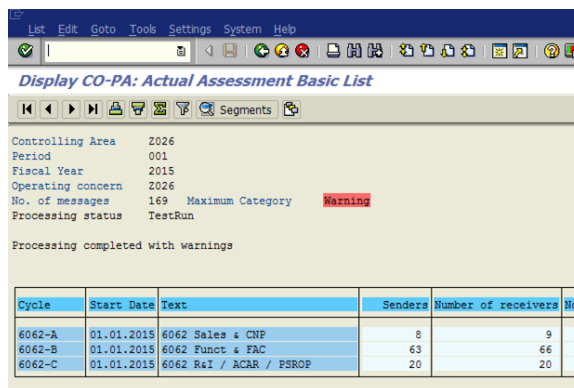
| | Field name | User action and values | Comment |
|---|-------------------------------|---|---|
| 0 | Controlling Area (dialog box) | Enter controlling area | Only needed if dialog box displays. |
| 1 | Periods | Enter one number in each field, for example, from 1 to 1 | Jan =1, Dec=12 |
| 2 | Year | Current year | |
| 3 | Test run | | Use test run until the run is error-free |
| 4 | Detailed lists | x | |
| 5 | Cycle | Enter the cycle code => the Start Date comes when you click Enter | You can execute several cycles in one execution |



STEP 3

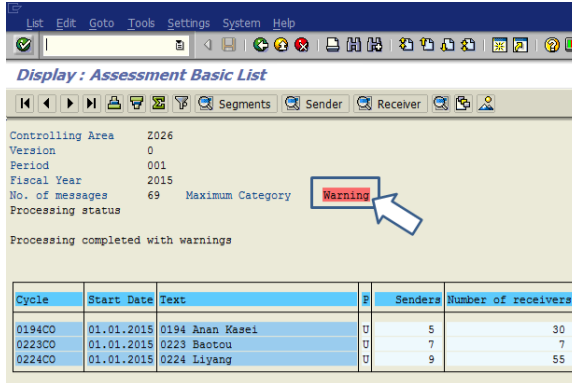
Execute

It is compulsory to clear Error messages before saving the cycle

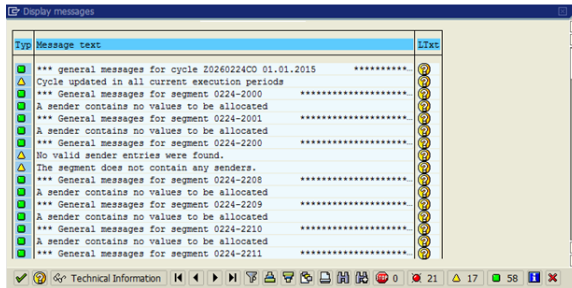


i Inform the person in charge of cycles maintenance if there are errors messages and wait until there are solved before starting the next step

Click **Warning** or **Errors** to display messages

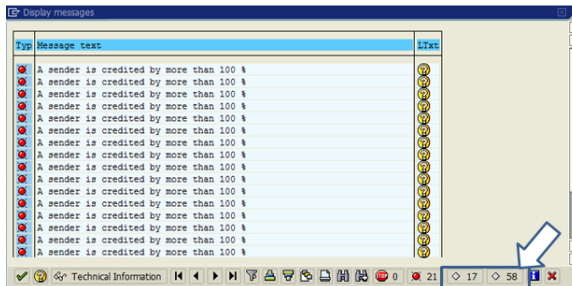


i Messages are displayed

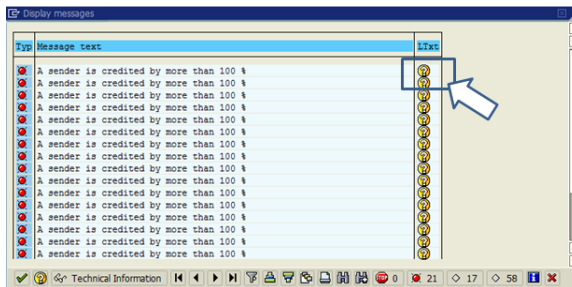


You can click:

: hide information
and/or : warning messages



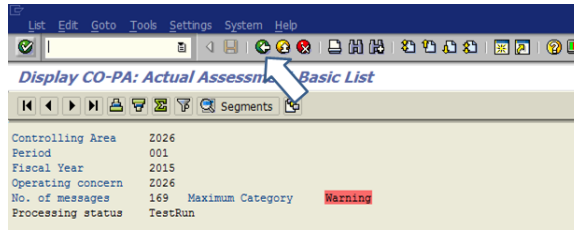
and then click to get more detail regarding the error message



- GA717 - No receiver tracing factors defined
- GA721 - A sender is credited by more than 100 %

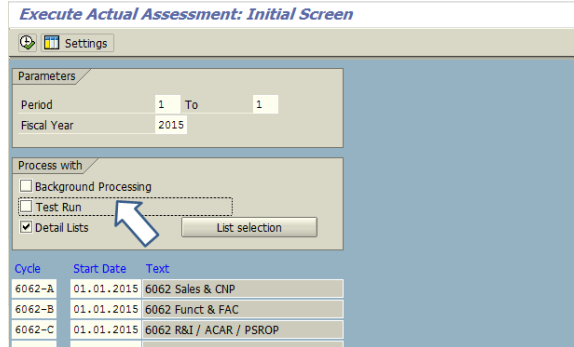
STEP 4

Go back to the initial screen by clicking 

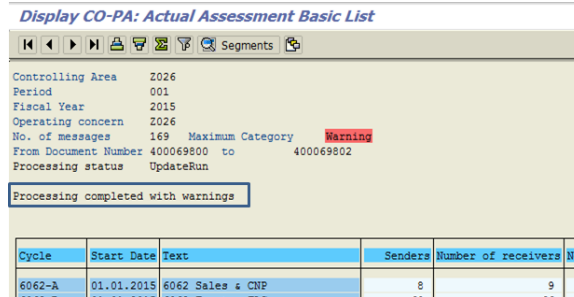


STEP 5

Untick the field "Test run" and execute 




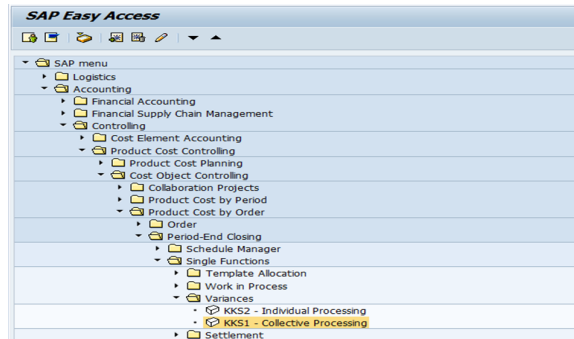
The process is completed without error



STEP 1

Start the transaction using the menu path or transaction code

 **KKS1 - Collective Processing**



Variance Calculation: Initial Screen

Variance Calculation: Initial Screen

Plant All Plants in Controlling Area

With Production Orders
 W/Product Cost Collectors
 With Process Orders

Parameters

Period
Fiscal Year

All target cost vsns 000,001,003
 Selected Target Cost Vsns 000

Processing options

Background Processing
 Test Run
 Detail list

STEP 2

1. Enter the plant code
2. Untick "with Production Orders"
3. Do not tick "W/Product Cost Collectors"
4. Select "With Process Orders"
5. Enter the period to close and the fiscal year
6. Select "Background Processing"
7. Untick "Test Run"
8. Tick "Detail list"

Execute 

Variance Calculation: Initial Screen

Plant All Plants in Controlling Area

With Production Orders
 W/Product Cost Collectors
 With Process Orders

Parameters

Period
Fiscal Year

All target cost vsns 000,001,003
 Selected Target Cost Vsns 000

Processing options

Background Processing
 Test Run
 Detail list

STEP 3

If requested enter the controlling area

and 

Variance Calculation: Initial Screen

Plant All Plants in Controlling Area

With Production Orders
 W/Product Cost Collectors
 With Process Orders

Parameters

Period
Fiscal Year

All target cost vsns 000,001,003
 Selected Target Cost Vsns 000

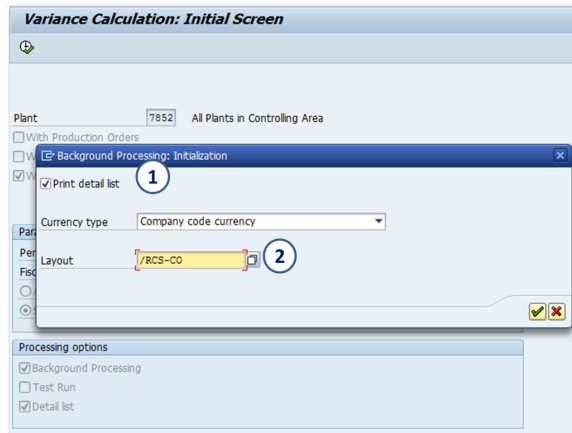
Processing options

Background Processing
 Test Run
 Detail list

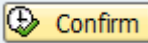
Set Controlling Area
Controlling Area

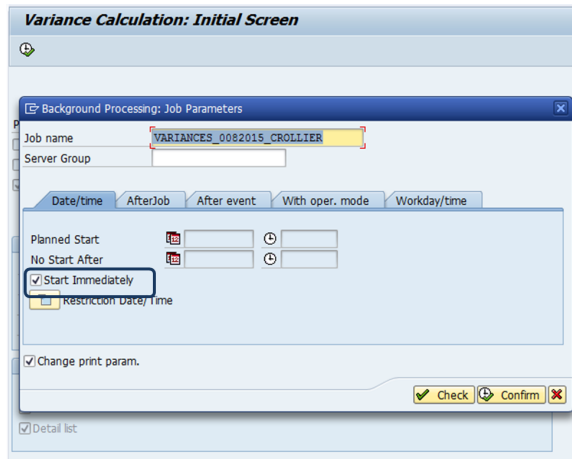
STEP 4

1. Tick on « Print detail list »
2. Select the layout « /RCS-CO »




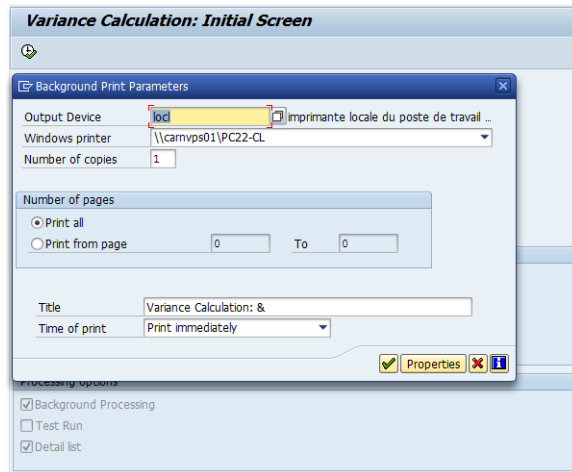
STEP 5


- Use the default job name and the default server group
- Tick on « Start immediately »
- Click on 

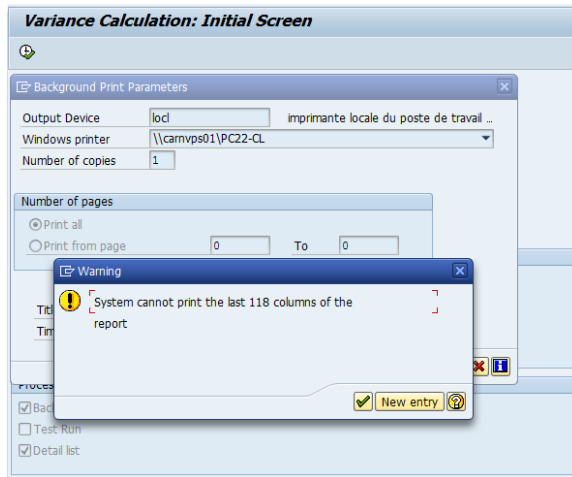


STEP 6

- Enter an output device
- Validate the printing parameters
- and enter 



You can skip the warning message by clicking on 

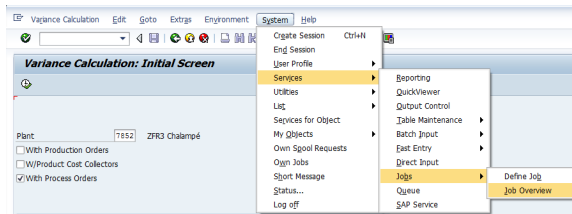


A message informs that the Job is active


Job VARIANCES_0082015_CROLLIER for user CROLLIER is Active

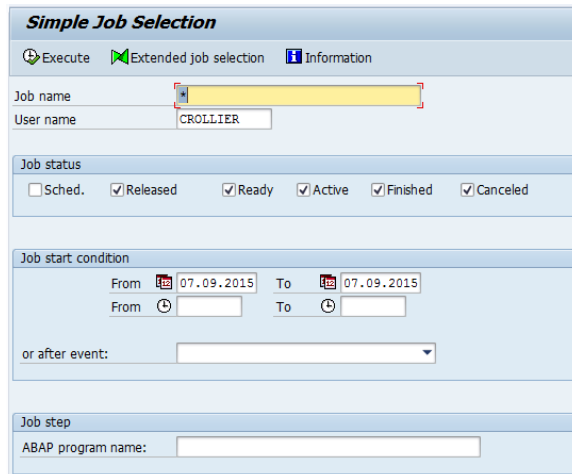
STEP 7

Open the job overview



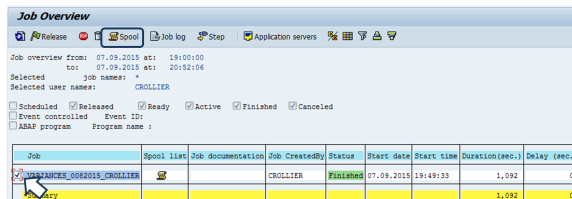
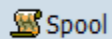
STEP 8

Execute  with your user name



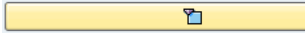
STEP 9

Once the job has the status finished, you can display the spool by selecting the job and clicking on

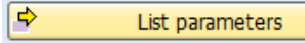


STEP 10

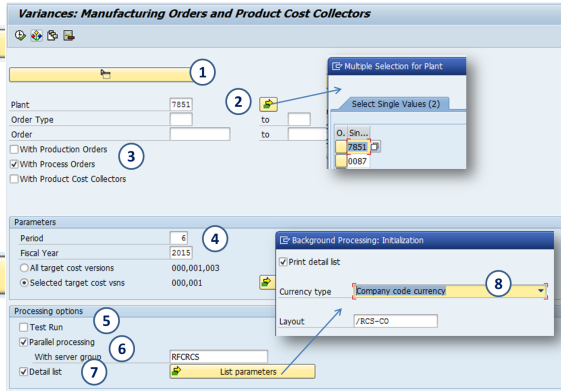
1. Click on



2. Enter the list of plants
3. Select "With Process Orders"
4. Enter the period to close and the fiscal year
5. Untick "Test Run"
6. Tick "Parallel processing"
7. Tick "Detail list"
8. Click on



- Tick "Print detail list"
- Enter the layout /RCS-CO



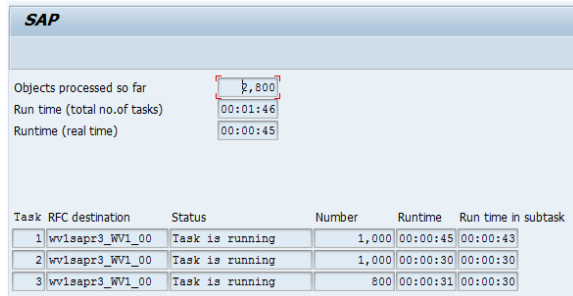
Execute

Background Processing

You can execute this transaction in background pressing F9 and you will get the job spool through [S](#) [MX](#)

STEP 3

You are informed that tasks are running



STEP 4

The variance calculation report is displayed

Variance Calculation: List

Basic List Cost Elements Scrap Variance Categories

Period: 8 Fiscal year: 2015 Messages: 31,596 Currency: EUR

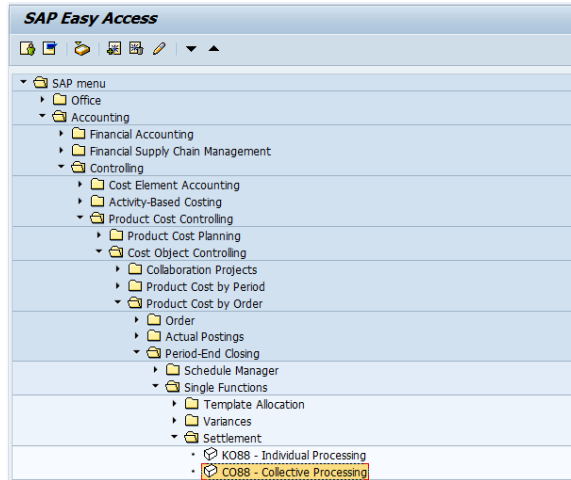
Version: Target Costs for Total Variances (0) Company code currency

| Plant | Cost Object | Material | Target Costs | Actual Costs | Variance |
|-------|-------------|-------------------|--------------|--------------|------------|
| | | 00000000000010519 | 0.00 | 9,065.96 | 322.15 |
| | | 00000000000010566 | 0.00 | 22,307.30 | 92.29 |
| | | 00000000000010567 | 0.00 | 0.00 | 0.00 |
| | | 00000000000010571 | 0.00 | 0.00 | 0.00 |
| | | 00000000000011830 | 0.00 | 4,303,909.1 | 499,965.26 |
| | | 00000000000015158 | 0.00 | 5,885.24 | 3.38 |
| | | 00000000000016177 | 0.00 | 0.00 | 0.00 |
| | | 00000000000016181 | 0.00 | 0.00 | 0.00 |
| | | 00000000000017023 | 0.00 | 44,755.74 | 127.70 |
| | | 00000000000017024 | 0.00 | 3,492.86 | 67.96 |
| | | 00000000000017032 | 0.00 | 0.00 | 0.00 |
| | | 00000000000017036 | 0.00 | 0.00 | 0.00 |
| | | 00000000000021117 | 0.00 | 0.00 | 0.00 |
| | | 00000000000023128 | 0.00 | 22,070.57 | 401.44 |
| | | 00000000000023335 | 0.00 | 0.00 | 0.00 |
| | | 00000000000023474 | 0.00 | 31,723.72 | 173.19 |
| | | 00000000000024274 | 0.00 | 0.00 | 0.00 |
| | | 00000000000024504 | 0.00 | 137,203.33 | 13,447.84 |
| | | 00000000000024572 | 0.00 | 15,249.72 | 223.54 |
| | | 00000000000025255 | 0.00 | 0.00 | 0.00 |
| | | 00000000000025449 | 0.00 | 51,190.55 | 421.29 |
| | | 00000000000036011 | 0.00 | 5,708.74 | 272.99 |

STEP 1

Start the transaction using the menu path or transaction code

CO88 - Collective Processing



i Actual Settlement:
Production/Process Orders:
Initial screen

Actual Settlement: Production/Process Orders

Plant: ZFR3 Chalampé

With Production Orders
 With Process Orders
 With Product Cost Collectors
 With QM Orders
 With Orders for Projects/Networks
 With Orders for Cost Objects

Parameters

Settlement period: Posting period:

Fiscal Year:

Processing type:

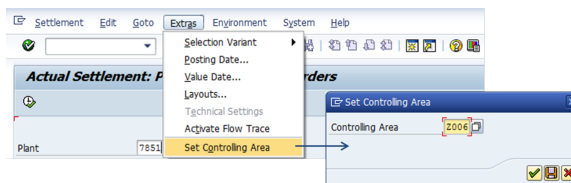
Processing Options

Background Processing
 Test Run
 Detail List
 Check trans. data

[Layouts](#)

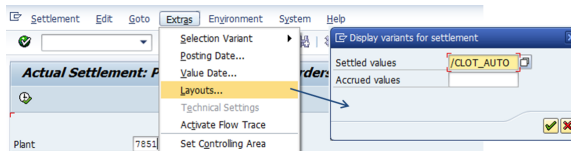
STEP 2

Set the controlling area



STEP 3

Define the layout for the result : /CLOT_AUTO



STEP 4

1. Enter the plant code
2. Select with "Process Orders"
3. Parameters
 - Enter the period to close and the fiscal year
 - Select the processing type "Automatic"

4. Tick "Background Processing"
5. Untick "Test Run"
6. Tick "Detail list"
7. Tick "Check trans. data"

Execute 


STEP 5

- Tick "Start immediately"


• Confirm  Confirm

STEP 6

- Enter an output device
- Validate the printing

parameters 

A message informs that the Job is ready

 Job SET_ORD for user CROLLIER is Ready

STEP 7

Display the result

STEP 8

Execute with your username

Simple Job Selection

Execute Extended job selection Information

Job name:

User name: CROLLIER

Job status: Sched. Released Ready Active Finished Canceled

Job start condition

From: 08.09.2015 To: 08.09.2015

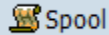
or after event:

Job step

ABAP program name:

STEP 9

Once the job has the status finished, you can display the spool by selecting the job and clicking on



Job Overview

Release Spool Job log Step Application servers

Job overview from: 08.09.2015 at: 13:00:44
to: 08.09.2015 at: 13:13:56

Selected job names: *
Selected user names: CROLLIER

Scheduled Released Ready Active Finished Canceled

| Job | Spool list | Job documentation | Job CreatedBy | Status | Start date | Start time | Duration(sec.) | Delay (sec.) |
|---------|------------|-------------------|---------------|----------|------------|------------|----------------|--------------|
| SP1_0RD | | | CROLLIER | Finished | 08.09.2015 | 13:11:52 | 647 | 0 |
| MAI_Ary | | | | | | | 647 | 0 |

STEP 10

Select the spool and click on



Output Controller: List of Spool Requests

| Spool no. | Type | Date | Time | Status | Pages | Title or name of spool request |
|-----------|------|------------|-------|--------|-------|--|
| 73609 | | 08.09.2015 | 19:22 | - | 6 | Actual Settlement: Production/Process Orders |

STEP 11

The result displayed the sender, the receiver and the posted amount

Note: the settlement will only be done for orders with the status DLV (Delivered) or TECO (Technically completed). Orders without these status are considered WIP (Work in Process)

Detail list - Settled values

| Sender | Short text: Sender | Receiver | ValCOArCur | Inform. |
|-------------|---|----------------|------------|-----------|
| ORD 2618729 | ACIDE ADIPIQUE EX -EFFOL (EFFOL + AA3T | MAI 7852/74337 | 13,142.69 | |
| ORD 2618729 | ACIDE ADIPIQUE EX -EFFOL (EFFOL + AA3T | FSG 0007932372 | 13,142.69 | Variances |
| ORD 2619481 | ACIDE ADIPIQUE EX -EFFOL (EFFOL + AA3T | MAI 7852/74337 | 13,142.69 | |
| ORD 2619481 | ACIDE ADIPIQUE EX -EFFOL (EFFOL + AA3T | FSG 0007932352 | 13,142.69 | Variances |
| ORD 2619613 | ACIDE ADIPIQUE EX -EFFOL (EFFOL + AA3T | MAI 7852/74337 | 13,142.69 | |
| ORD 2619613 | ACIDE ADIPIQUE EX -EFFOL (EFFOL + AA3T | FSG 0007932340 | 13,142.69 | Variances |
| ORD 2619626 | ACIDE ADIPIQUE EX -EFFOL (EFFOL + AA3T | MAI 7852/74337 | 13,142.69 | |
| ORD 2619626 | ACIDE ADIPIQUE EX -EFFOL (EFFOL + AA3T | FSG 0007932328 | 13,142.69 | Variances |
| ORD 2621823 | ACIDE ADIPIQUE EX -EFFOL (EFFOL + AA3T | MAI 7852/74337 | 13,142.69 | |
| ORD 2621823 | ACIDE ADIPIQUE EX -EFFOL (EFFOL + AA3T | FSG 0007931714 | 13,142.69 | Variances |
| ORD 2621928 | ACIDE ADIPIQUE EX -EFFOL (EFFOL + AA3T | MAI 7852/74337 | 13,142.69 | |
| ORD 2621928 | ACIDE ADIPIQUE EX -EFFOL (EFFOL + AA3T | FSG 0007931696 | 13,142.69 | Variances |
| ORD 2621933 | ACIDE ADIPIQUE EX -EFFOL (EFFOL + AA3T | MAI 7852/74337 | 13,142.69 | |
| ORD 2621933 | ACIDE ADIPIQUE EX -EFFOL (EFFOL + AA3T | FSG 0007931675 | 13,142.69 | Variances |
| ORD 2621938 | ACIDE ADIPIQUE EX -EFFOL (EFFOL + AA3T | MAI 7852/74337 | 13,142.69 | |
| ORD 2621938 | ACIDE ADIPIQUE EX -EFFOL (EFFOL + AA3T | FSG 0007931660 | 13,142.69 | Variances |
| ORD 2623129 | ACIDE ADIPIQUE EX -EFFOL (EFFOL + AA3T | MAI 7852/74337 | 13,142.69 | |
| ORD 2623129 | ACIDE ADIPIQUE EX -EFFOL (EFFOL + AA3T | FSG 0007931642 | 13,142.69 | Variances |

STEP 1

Start the transaction ZWFA78



Variances: Manufacturing Orders and Product Cost Collectors: Initial Screen

Settlement: Production Orders and Product Cost Collectors

Plant:

Parameters
 Settlement period:
 Settlement year:
 Processing type: Automatic

Execution type
 Settlement
 Reverse settlement

Processing options
 Test Run
 Parallel processing
 Check transaction data


Output options
 With list

Optional parameters
 Posting period:
 Posting Date:
 Value date:

Technical settings

STEP 2

You can look for an existing variant by

clicking on 

Select the variant and 

Check the settlement period & posting period

Execute 

Settlement: Production Orders and Product Cost Collectors

Plant:

Parameters
 Settlement period:
 Settlement year:
 Processing type: Automatic

Execution type
 Settlement
 Reverse settlement

Processing options
 Test Run
 Parallel processing
 Check transaction data

Output options
 With list


Optional parameters
 Posting period:
 Posting Date:
 Value date:

Technical settings


ED: ABAP: Variant Directory of Program RK07CO88

| Variant name | Short Description | Environment; Protected | Changed by | Last changed on |
|----------------|---------------------------|------------------------|------------|-----------------|
| SCMA_7811_STPP | 7811: PP order settlement | A | FYPANG | 21.03.2014 |
| SCMA_8090_STPP | 8090: PP order settlement | A | PT300090 | 01.10.2014 |
| SCMA_8485_STPP | SCMA_8485_STPP | A | PT300090 | 01.10.2014 |
| SCMA_ZFR3_STPP | ZFR3: PP order settlement | A | PT300090 | 01.10.2014 |
| SCMA_ZFR9_STPP | SCMA_ZFR9_STPP | A | PT300090 | 01.10.2014 |
| SCMA_ZVE1_PPOR | | A | BR004229 | 30.06.2014 |
| 2010-ZU54 | ECO Services | A | MKONDABA | 29.09.2014 |
| 2010-ZU54-2015 | ECO Services | A | MKONDABA | 29.09.2014 |
| 2025-7394 | | A | | |
| 2025-7523 | | A | | |
| 2026-7154 | Rhodia Inc | A | | |
| 2026-7424 | Rhodia Inc | A | | |
| 2026-7424-2015 | Rhodia Inc | A | PESTELLE | 04.01.2011 |
| 2028-7651 | Rhodia Canada Inc | A | PESTELLE | 02.03.2010 |
| ZC088_Z001 | | A | PHGUENAR | 09.03.2011 |
| ZC088_Z006 | | A | ZLDSIC04 | 04.04.2013 |
| ZC088_Z010 | | A | RKONDABA | 12.11.2014 |
| ZC088_Z026 | | A | PHGUENAR | 09.03.2011 |

If you don't have the variant you can make the selection :

1. Click on 
2. Enter the list of plants
3. Select "With Process Orders"
4. Enter the period to close and the fiscal year
5. Tick "Settlement"
6. Untick "Test Run"
7. Tick "Parallel processing"
8. Tick "Check transaction data"
9. Tick "With list"
10. Enter the Posting period (=Settlement period)

Execute 

 **Background Processing**
 You can execute this transaction in background pressing F9 and you will get the job spool through **S MX**

Settlement: Production Orders and Product Cost Collectors

Plant:

Order Type: to

Order: to

With Production Orders
 With Process Orders
 With Product Cost Collectors
 With QM Orders

W/ Protect Ords
 With Orders for Cost Objects

Parameters
 Settlement period:
 Settlement year:
 Processing type: Automatic

Execution type
 Settlement
 Reverse settlement

Processing options
 Test Run
 Parallel processing
 With server group:
 Check transaction data

Output options
 With list

Optional parameters
 Posting period:
 Posting Date:
 Value date:

Technical settings

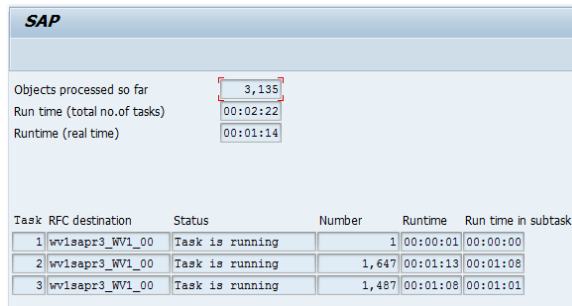
ED: Multiple Selection for Plant

Select Single Values (2)

0; SIn...

STEP 3

You are informed that tasks are running



SAP

Objects processed so far: 3,135
Run time (total no. of tasks): 00:02:22
Runtime (real time): 00:01:14

| Task | RFC destination | Status | Number | Runtime | Run time in subtask |
|------|-----------------|-----------------|--------|----------|---------------------|
| 1 | wv1sapr3_WV1_00 | Task is running | 1 | 00:00:01 | 00:00:00 |
| 2 | wv1sapr3_WV1_00 | Task is running | 1,647 | 00:01:13 | 00:01:08 |
| 3 | wv1sapr3_WV1_00 | Task is running | 1,487 | 00:01:08 | 00:01:01 |

STEP 4

The settlement was executed



Settlement: Production Orders and Product Cost Collectors Basic list

Selection

| Selection Parameters | Value | Name |
|------------------------------|------------|---------------|
| Plant | 7852 | ZFR3 Chalmopé |
| With Production Orders | X | |
| With Product Cost Collectors | X | |
| With Process Orders | X | |
| With QM Orders | X | |
| Period | 008 | |
| Posting period | 008 | |
| Fiscal Year | 2015 | |
| Processing type | 1 | Automatic |
| Posting Date | 31.08.2015 | |
| Controlling Area | Z006 | Rhodia Europe |

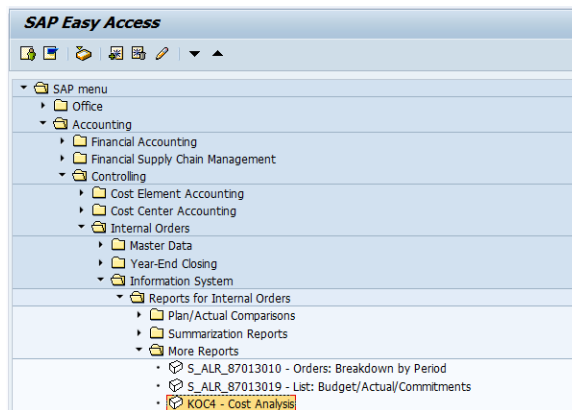
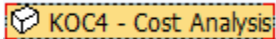
Processing Options

| Selection Parameters | Value |
|----------------------|---------------------|
| Execution type | Settlement executed |
| Processing mode | Update run |

If errors occurred in previous steps check the settlement rule and contact local responsible to correct it.

STEP 1

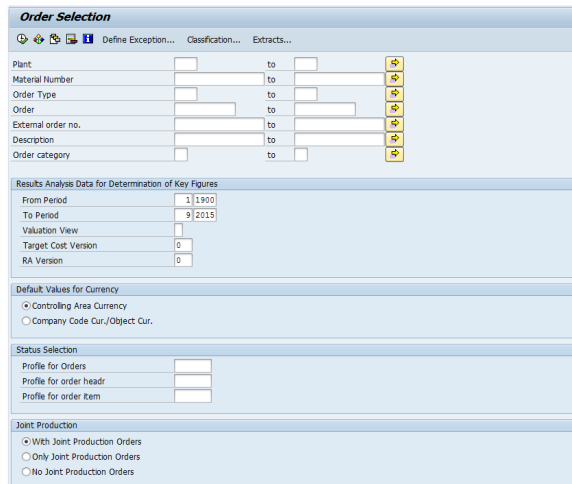
Start the transaction using the menu path or transaction code



SAP Easy Access

- SAP menu
 - Office
 - Accounting
 - Financial Accounting
 - Financial Supply Chain Management
 - Controlling
 - Cost Element Accounting
 - Cost Center Accounting
 - Internal Orders
 - Master Data
 - Year-End Closing
 - Information System
 - Reports for Internal Orders
 - Plan/Actual Comparisons
 - Summarization Reports
 - More Reports
 - S_ALR_87013010 - Orders: Breakdown by Period
 - S_ALR_87013019 - List: Budget/Actual/Commitments
 - KOC4 - Cost Analysis**

i Order Selection: Initial screen



Order Selection

Plant: _____ to _____

Material Number: _____ to _____

Order Type: _____ to _____

Order: _____ to _____

External order no.: _____ to _____

Description: _____ to _____

Order category: _____ to _____

Results Analysis Data for Determination of Key Figures

From Period: 1 | 1900

To Period: 9 | 2015

Valuation View: _____

Target Cost Version: 0

RA Version: 0

Default Values for Currency

Controlling Area Currency

Company Code Cur./Object Cur.

Status Selection

Profile for Orders: _____

Profile for order headr: _____

Profile for order item: _____

Joint Production

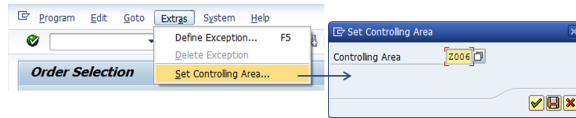
With Joint Production Orders

Only Joint Production Orders

No Joint Production Orders

STEP 2

Set the Controlling Area



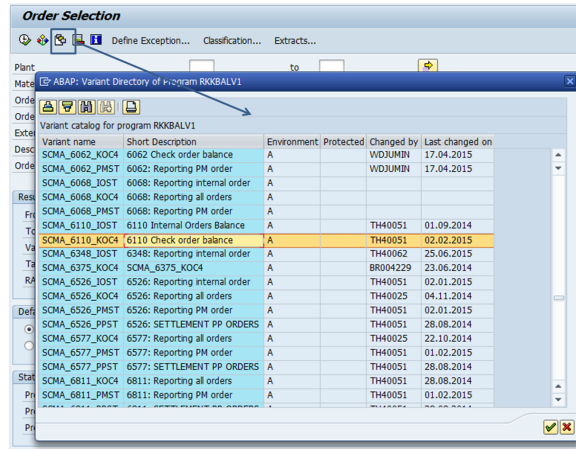
STEP 3

You can look for an existing variant by

clicking on

Select the variant and

Enter the period



When there is not an existing variant you can make the following selection :

1. Enter the plant code

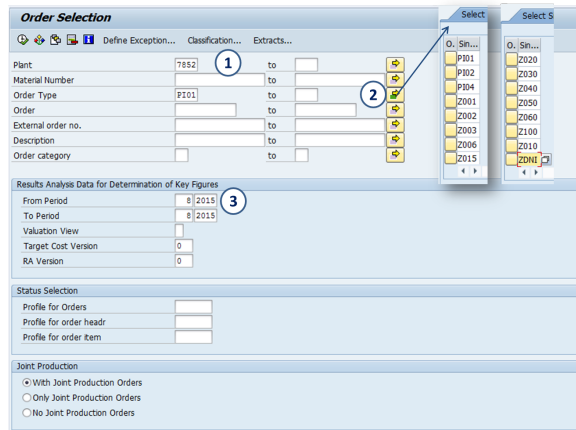
2. Enter the list of "order type" using the list below

| | | | | |
|------|------|------|------|------|
| PI01 | Z002 | Z015 | Z050 | ZDNI |
| PI02 | Z003 | Z020 | Z060 | |
| PI04 | Z006 | Z030 | Z100 | |
| Z001 | ZDNI | Z040 | Z010 | |

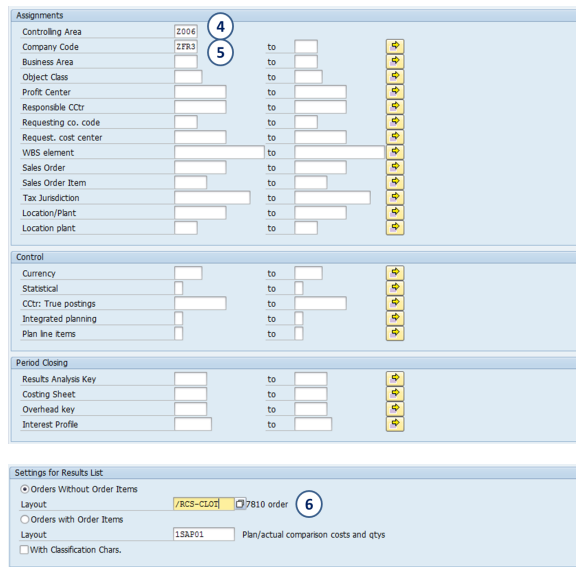
3. Enter the period

4. Enter the controlling area

5. Enter the company code

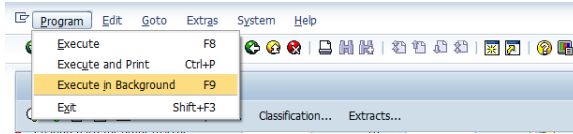


Enter the layout "/RCS-CLOT" to filter on non balanced orders




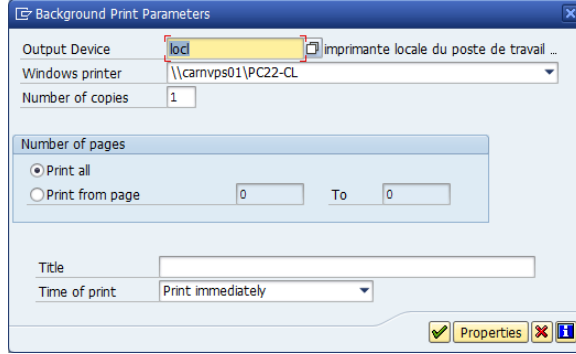
STEP 4

During the closing period, launch processing in background with RFCRCS server group (when the option is available)

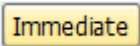



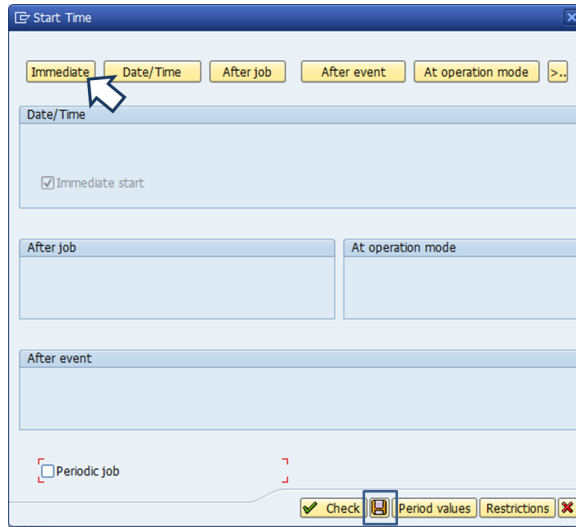
STEP 5

- Enter an output device
- Validate the printing parameters
- and enter 

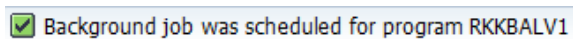


STEP 6

Click on  to launch the processing immediately and save 

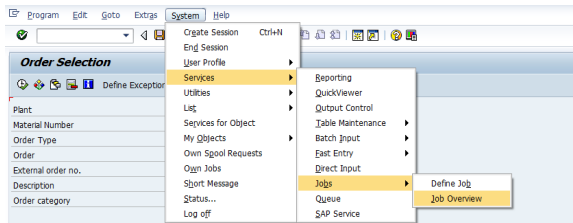


A message informs that the Job is active



STEP 7

Open the job overview



STEP 8

Execute  with your user name

Simple Job Selection

Execute Extended job selection Information

Job name:

User name: CROLLIER

Job status: Sched. Released Ready Active Finished Canceled

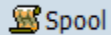
Job start condition: From 08.09.2015 To 08.09.2015

or after event:

Job step: ABAP program name:

STEP 9

Once the job has the status finished, you can display the spool by selecting the job and clicking on



Job Overview

Release Spool Job log Step Application servers

Job overview from: 08.09.2015 at: 15:33:41
To: 08.09.2015 at: 23:33:53

Selected job names: *
Selected user names: CROLLIER

Scheduled Released Ready Active Finished Canceled

| Job | Spool list | Job documentation | Job CreatedBy | Status | Start date | Start time | Duration(sec.) | Delay (sec.) |
|---|------------|-------------------|---------------|----------|------------|------------|----------------|--------------|
| <input checked="" type="checkbox"/> 73996 | | | CROLLIER | Finished | 08.09.2015 | 19:31:29 | 475 | 0 |
| <input checked="" type="checkbox"/> Summary | | | | | | | 475 | 0 |

STEP 10

Select the spool and click on



Output Controller: List of Spool Requests

| no. | Type | Date | Time | Status | Pages | Title |
|---|------|------------|-------|--------|-------|--------------------------|
| <input checked="" type="checkbox"/> 73996 | | 09.09.2015 | 01:39 | - | 2 | LISTIS LOCL RKKBALV1_CRO |

STEP 11

This report display all unbalanced process order.

Current Data

| Plant | Order | Material Number | Crcy | Actual cost debit | Total act.costs |
|-------------------------------------|--------|-----------------|-------|-------------------|-----------------|
| <input type="checkbox"/> | 7852 | 3383546 | 61111 | EUR 11,999.58 | 11,999.58 |
| <input type="checkbox"/> | 7852 | 3383547 | 61111 | EUR 1,765.92 | 1,765.92 |
| <input type="checkbox"/> | 7852 | 3383548 | 61111 | EUR 48,924.00- | 48,924.00- |
| <input type="checkbox"/> | 7852 | 3383549 | 61111 | EUR 1,737.30 | 1,737.30 |
| <input checked="" type="checkbox"/> | * 7852 | | 61111 | EUR 33,431.20- | 33,431.20- |
| <input type="checkbox"/> | 7852 | 3383585 | 72647 | EUR 9,709.44- | 9,709.44- |
| <input type="checkbox"/> | 7852 | 3383586 | 72647 | EUR 14,464.68- | 14,464.68- |
| <input type="checkbox"/> | 7852 | 3391561 | 72647 | EUR 55,108.20- | 55,108.20- |
| <input checked="" type="checkbox"/> | * 7852 | | 72647 | EUR 79,282.32- | 79,282.32- |
| <input type="checkbox"/> | 7852 | 3383535 | 72765 | EUR 116,758.54 | 116,758.54 |
| <input type="checkbox"/> | 7852 | 3383536 | 72765 | EUR 8,683.11- | 8,683.11- |
| <input checked="" type="checkbox"/> | * 7852 | | 72765 | EUR 108,075.43 | 108,075.43 |
| <input type="checkbox"/> | 7852 | 3383528 | 72766 | EUR 249.90- | 249.90- |
| <input type="checkbox"/> | 7852 | 3383529 | 72766 | EUR 280.86- | 280.86- |
| <input checked="" type="checkbox"/> | * 7852 | | 72766 | EUR 530.76- | 530.76- |
| <input type="checkbox"/> | 7852 | 3383578 | 72811 | EUR 0.20- | 0.20- |
| <input type="checkbox"/> | 7852 | 3383579 | 72811 | EUR 0.14- | 0.14- |
| <input checked="" type="checkbox"/> | * 7852 | | 72811 | EUR 0.34- | 0.34- |
| <input type="checkbox"/> | 7852 | 3374280 | 72814 | EUR 0.01- | 0.01- |
| <input checked="" type="checkbox"/> | * 7852 | | 72814 | EUR 0.01- | 0.01- |
| <input type="checkbox"/> | 7852 | 3383571 | 73712 | EUR 5,437.54 | 5,437.54 |
| <input type="checkbox"/> | 7852 | 3383572 | 73712 | EUR 2,980.89- | 2,980.89- |
| <input type="checkbox"/> | 7852 | 3391562 | 73712 | EUR 98,677.66 | 98,677.66 |
| <input checked="" type="checkbox"/> | * 7852 | | 73712 | EUR 101,134.31 | 101,134.31 |
| <input type="checkbox"/> | 7852 | 3383563 | 74337 | EUR 3,496.35- | 3,496.35- |
| <input type="checkbox"/> | 7852 | 3383564 | 74337 | EUR 3,226.63- | 3,226.63- |
| <input type="checkbox"/> | 7852 | 3383566 | 74337 | EUR 5,783.04- | 5,783.04- |

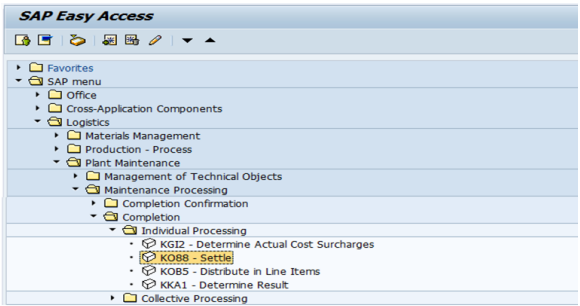
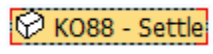
We can have sometimes some unbalanced process orders after the settlements due to late postings or materials lately costed. To perform the variance calculation and the settlement to COPA of these orders we have to do it individually using transactions KKS2 (for calculation) and KO88 (for the settlement).

Unable to render {include} The included page could not be found.

KO88 - VARIANCE SETTLEMENT

STEP 1

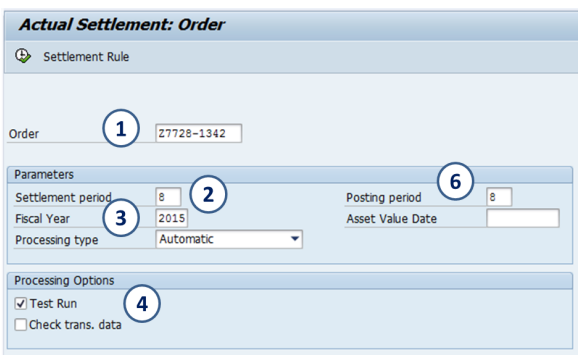
Start the transaction using the menu path or transaction code



STEP 2

- 1. Enter the order to be settled
- 2. Enter the settlement period
- 3. Enter the fiscal year
- 4. Select "test run" to preview the settlement without posting

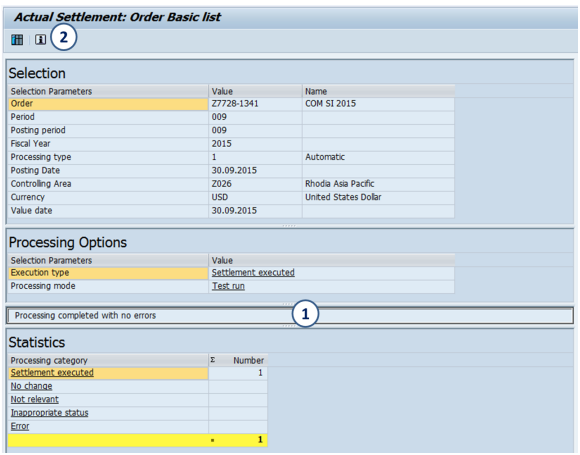
Execute



STEP 3

- 1. Check if there are error messages
- 2. Click on to display messages

Come back to the initial screen with



STEP 4

If there was no error, you can execute without "test mode"

Actual Settlement: Order

Settlement Rule

Order: 27728-1341


Parameters

Settlement period: 9 Posting period: 9
 Fiscal Year: 2015 Asset Value Date:
 Processing type: Automatic

Processing Options

Test Run
 Check trans. data

STEP 5

To view the detailed list of settlements click on 

Actual Settlement: Order Basic list

Selection

| Selection Parameters | Value | Name |
|----------------------|------------|----------------------|
| Order | 27728-1341 | COM SI 2015 |
| Period | 009 | |
| Posting period | 009 | |
| Fiscal Year | 2015 | |
| Processing type | 1 | Automatic |
| Posting Date | 30.09.2015 | |
| Controlling Area | 2026 | Rhoda Asia Pacific |
| Currency | USD | United States Dollar |
| Value date | 30.09.2015 | |

Processing Options

| Selection Parameters | Value |
|----------------------|---------------------|
| Execution type | Settlement executed |
| Processing mode | Update run |

Processing completed with no errors

Statistics

| Processing category | Number |
|----------------------|--------|
| Settlement executed | 1 |
| No change | |
| Not relevant | |
| Inappropriate status | |
| Error | 1 |


I perform corrective action if there are some errors in the previous steps



- For **WIP (ZWFAA07, KKAO and KKAX)** you have to run the transaction only in test mode, NOT in processing mode.

STEP 1

Start the transaction using the menu path or transaction code **KKAO**


 Order Selection: Initial screen

Calculate Work in Process: Collective Processing

Plant: All Plants

With Production Orders
 With Product Cost Collectors
 With Process Orders

Parameters

WIP to Period: 
 Fiscal Year:
 All RA Versions
 RA Version

Processing Options

Background Processing
 Test Run
 Log Information Messages

Output Options

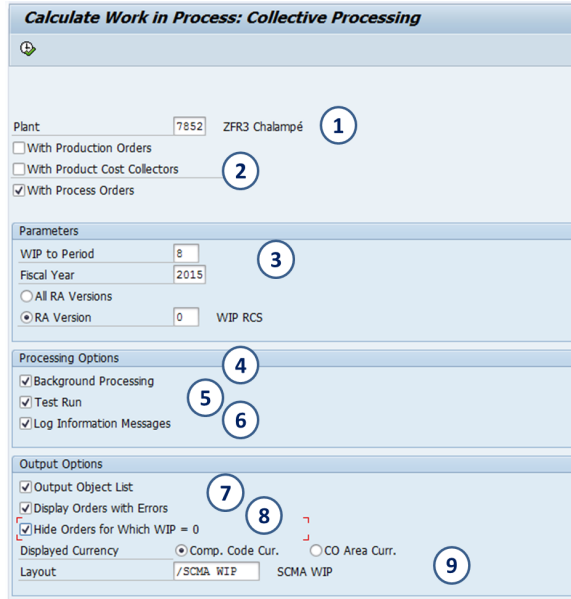
Output Object List
 Display Orders with Errors
 Hide Orders for Which WIP = 0
 Displayed Currency: Comp. Code Cur. CO Area Curr.
 Layout: /SCMA WIP SCMA WIP

STEP 2

1. Enter the plant
2. Select with "Process Orders"

3. Enter the WIP to period: last month for which the accrual /deferral or work in progress data must be calculated.
4. Tick "Background Processing"
5. Tick "Test Run"
6. Tick "Log Information Messages"
7. Tick "Display Orders with Errors"
8. Tick "Hide Orders for Which WIP = 0"
9. Layout = /SCMA WIP

Execute 



Calculate Work in Process: Collective Processing

Plant: 7852 ZFR3 Chalmé **1**

With Production Orders
 With Product Cost Collectors **2**
 With Process Orders

Parameters

WIP to Period: 8 **3**
Fiscal Year: 2015
 All RA Versions
 RA Version: 0 WIP RCS

Processing Options

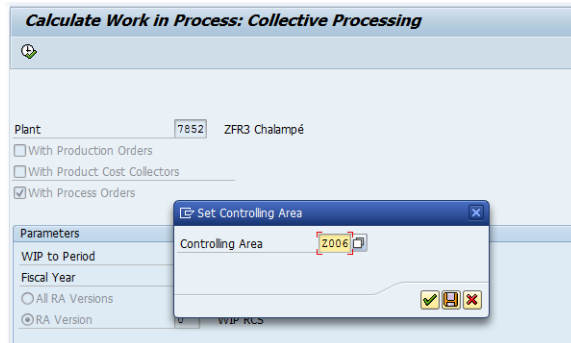
Background Processing **4**
 Test Run **5**
 Log Information Messages **6**

Output Options

Output Object List **7**
 Display Orders with Errors **8**
 Hide Orders for Which WIP = 0
Displayed Currency: Comp. Code Cur. CO Area Curr.
Layout: /SCMA WIP **9** SCMA WIP

STEP 3

Set the controlling area



Calculate Work in Process: Collective Processing

Plant: 7852 ZFR3 Chalmé

With Production Orders
 With Product Cost Collectors
 With Process Orders

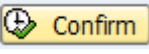
Parameters

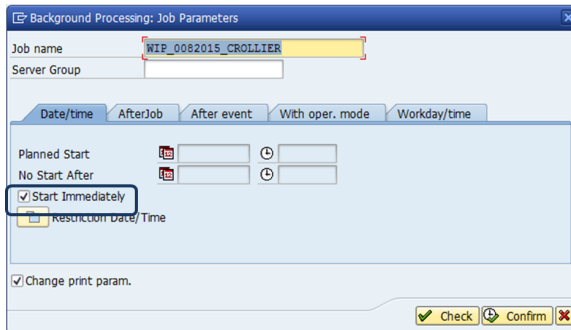
WIP to Period
Fiscal Year
 All RA Versions
 RA Version

Set Controlling Area

Controlling Area: 2006

STEP 4

- Tick "Start immediately"
- Confirm 



Background Processing: Job Parameters

Job name: WIP_0082015_CROLLIER
Server Group:

Date/time | AfterJob | After event | With oper. mode | Workday/time


Planned Start: [] []
No Start After: [] []

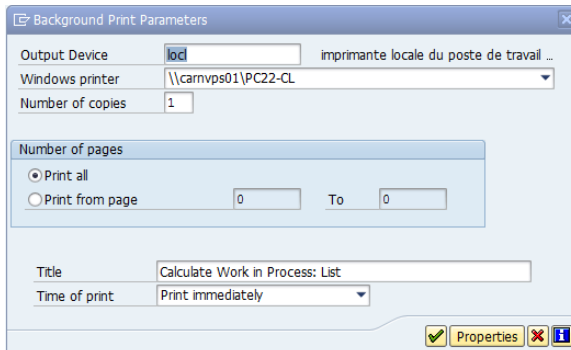
Start Immediately
 Resurrection Date/Time

Change print param.

Check Confirm

STEP 5

- Enter an output device
- Validate the printing parameters
- and enter 



Background Print Parameters

Output Device: lcd imprimante locale du poste de travail ...
Windows printer: \\camvps01\PC22-CL
Number of copies: 1


Number of pages

Print all
 Print from page: 0 To: 0

Title: Calculate Work in Process: List
Time of print: Print immediately

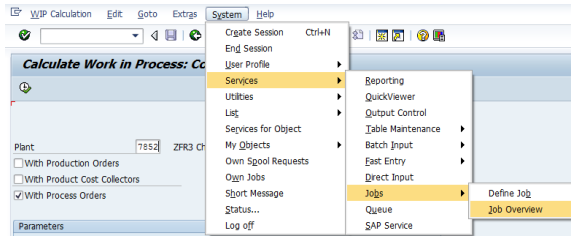
Properties

A message informs that the Job is active


 Job WIP_0082015_CROLLIER for user CROLLIER is Ready

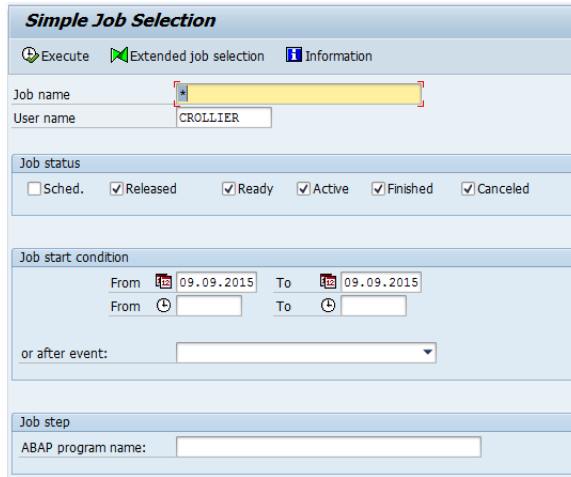
STEP 6

Open the job overview



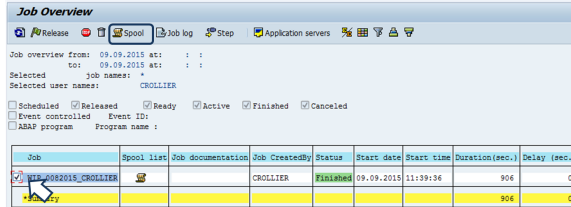
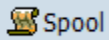
STEP 7

Execute  with your user name



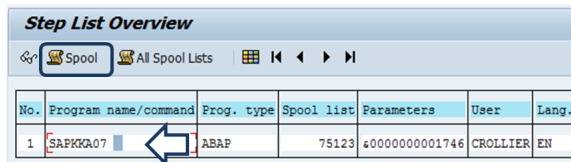
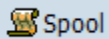
STEP 10

Once the job has the status finished, you can display the spool by selecting the job and clicking on



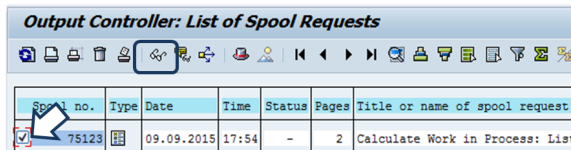
STEP 11

Select the program and click on



STEP 12

Select the spool and click on 

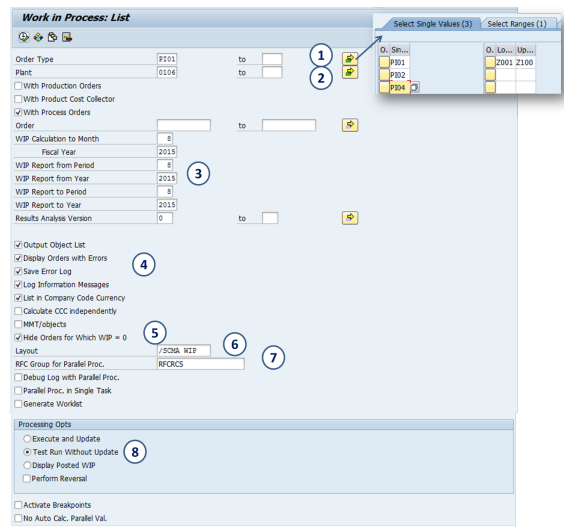


STEP 12

The order list with WIP was calculated

- e. List in Company Code Currency
- 5. Tick: Hide Orders for Which WIP = 0
- 6. Layout = /SCMA WIP
- 7. RFC Group for Parallel Proc. = RFCRCS
- 8. Tick: Test Run Without Update

Execute 



Work in Process: List

Order Type: P101 to
Plant: 0106 to

With Production Orders
 With Product Cost Collector
 With Process Orders

Order: _____ to _____

WIP Calculation to Month: 0
Fiscal Year: 2015

WIP Report from Period: 0
WIP Report from Year: 2015

WIP Report to Period: 0
WIP Report to Year: 2015

Results Analysis Version: 0 to _____

Output Object List
 Display Orders with Errors
 Save Error Log
 Log Information Messages
 List in Company Code Currency
 Calculate CCC Independently
 HMT/objects
 Hide Orders for Which WIP = 0

Layout: /SCMA WIP

RFC Group for Parallel Proc.: RFCRCS

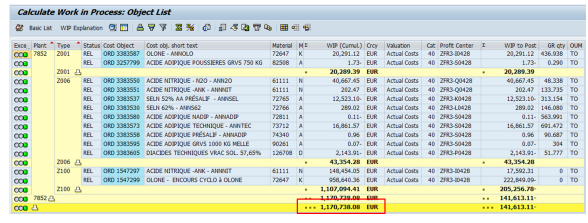
Debug Log with Parallel Proc.
 Parallel Proc. in Single Task
 Generate Worksheet

Processing Opts:
 Execute and Update
 Test Run Without Update
 Display Posted WIP
 Perform Reversal

Activate Breakpoints
 No Auto Calc. Parallel Val.

STEP 3

The order list with WIP was calculated by plant



Calculate Work in Process: Object List

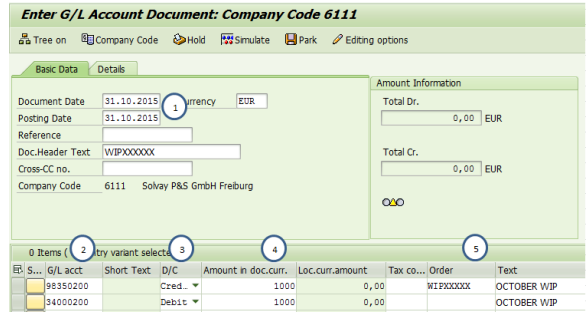
| Doc | Plant | Type | Status | Cost Object | Cost Obj. Short text | Material | UoM | WIP (Current) | Ccy | Valuation | Cost. Center | WIP to Post | GR Qty | QM |
|-----|-------|------|-------------|------------------------------------|---------------------------------------|----------|------------|---------------|--------------|---------------|---------------|--------------|------------|----|
| COB | 7852 | 2901 | REL | ORD 3385987 | OLONE - ANNOLO | 72647 | K | 20,291.12 | EUR | Actual Costs | 40 2903-00A28 | 20,291.12 | 436.938 | TO |
| COB | 2901 | Δ | REL | ORD 3257799 | ACIDE ADIPIQUE POSSIBLEMS GRVS 750 KG | 82598 | A | 0.75 | EUR | Actual Costs | 40 2903-00A28 | 0.75 | 0.290 | TO |
| COB | 2906 | Δ | REL | ORD 3385988 | ACIDE NETRIQUE - H2O - ANNOLO | 61111 | N | 20,299.39 | EUR | Actual Costs | 40 2903-00A28 | 20,299.39 | | TO |
| COB | 2906 | REL | ORD 3385985 | ACIDE NETRIQUE - ANK - ANNET | 61111 | N | 40,667.45 | EUR | Actual Costs | 40 2903-00A28 | 40,667.45 | 48.338 | TO | |
| COB | 2906 | REL | ORD 3385987 | SELA 32% AA PRESALP - ANNEL | 72765 | A | 702.47 | EUR | Actual Costs | 40 2903-00A28 | 702.47 | 137.750 | TO | |
| COB | 2906 | REL | ORD 3385986 | SELA 32% AA PRESALP - ANNEL | 72765 | A | 12,523.10 | EUR | Actual Costs | 40 2903-00A28 | 12,523.10 | 333.334 | TO | |
| COB | 2906 | REL | ORD 3385989 | SELA 32% AA PRESALP - ANNEL | 72765 | A | 299.60 | EUR | Actual Costs | 40 2903-00A28 | 299.60 | 146.980 | TO | |
| COB | 2906 | REL | ORD 3385988 | ACIDE ADIPIQUE MADIP - ANNAIDP | 72811 | A | 0.11 | EUR | Actual Costs | 40 2903-00A28 | 0.11 | 983.991 | TO | |
| COB | 2906 | REL | ORD 3385973 | ACIDE ADIPIQUE TECHNIQUE - ANNETEC | 73712 | A | 18,891.57 | EUR | Actual Costs | 40 2903-00A28 | 18,891.57 | 991.452 | TO | |
| COB | 2906 | REL | ORD 3385988 | ACIDE ADIPIQUE PRESALP - ANNAIDP | 74340 | A | 0.96 | EUR | Actual Costs | 40 2903-00A28 | 0.96 | 90.687 | TO | |
| COB | 2906 | REL | ORD 3385985 | ACIDE ADIPIQUE MADIP - ANNAIDP | 74340 | A | 0.07 | EUR | Actual Costs | 40 2903-00A28 | 0.07 | 394 | TO | |
| COB | 2906 | REL | ORD 3385985 | ACIDE ADIPIQUE GRYV 1000 KG NELLE | 90261 | A | 2,143.92 | EUR | Actual Costs | 40 2903-00A28 | 2,143.92 | 51.277 | TO | |
| COB | 2906 | REL | ORD 3547597 | ACIDE NETRIQUE - ANK - ANNET | 61111 | N | 43,354.28 | EUR | Actual Costs | 40 2903-00A28 | 43,354.28 | | TO | |
| COB | 2100 | REL | ORD 3385985 | ACIDE ADIPIQUE GRYV 1000 KG NELLE | 90261 | A | 146,424.00 | EUR | Actual Costs | 40 2903-00A28 | 146,424.00 | 11,900.31 | TO | |
| COB | 2100 | REL | ORD 3547599 | OLONE - ENCOURE CYCLO A OLONE | 72647 | K | 998,649.36 | EUR | Actual Costs | 40 2903-00A28 | 998,649.36 | 222,849.09 | TO | |
| COB | 7852 | Δ | REL | ORD 3385988 | OLONE - ENCOURE CYCLO A OLONE | 72647 | K | 1,120,228.08 | EUR | Actual Costs | 40 2903-00A28 | 1,120,228.08 | 203,264.39 | TO |
| COB | 7852 | Δ | REL | ORD 3385988 | OLONE - ENCOURE CYCLO A OLONE | 72647 | K | 1,120,228.08 | EUR | Actual Costs | 40 2903-00A28 | 1,120,228.08 | 141,613.11 | TO |

STEP 1

- Start the transaction FB50
1. Document and Posting date (Closing month)
 2. Accounts to post the WIP
 3. Posting Key (Debit or Credit)
 4. Amount of WIP
 5. Order in Work in Progress

WIP Calculation

Make sure that you have previously calculated the WIP and collected the orders in WIP



Enter G/L Account Document: Company Code 6111

Tree on Company Code Hold Simulate Park Editing options

Basic Data Details

Document Date: 31.10.2015 Currency: EUR
Posting Date: 31.10.2015

Reference: _____
Doc.Header Text: WIPXXXXXX
Cross-CC no.: _____
Company Code: 6111 Solvay P&S GmbH Freiburg

Amount Information:
Total Dr.: 0,00 EUR
Total Cr.: 0,00 EUR

0 Items (try variant selection)

| Ev | S... | G/L acct | Short Text | D/C | Amount in doc.curr. | Loc.curr.amount | Tax co... | Order | Text |
|----|------|----------|------------|-------|---------------------|-----------------|-----------|-----------|-------------|
| | | 98350200 | | Cred. | 1000 | 0,00 | | WIPXXXXXX | OCTOBER WIP |
| | | 34000200 | | Debit | 1000 | 0,00 | | WIPXXXXXX | OCTOBER WIP |

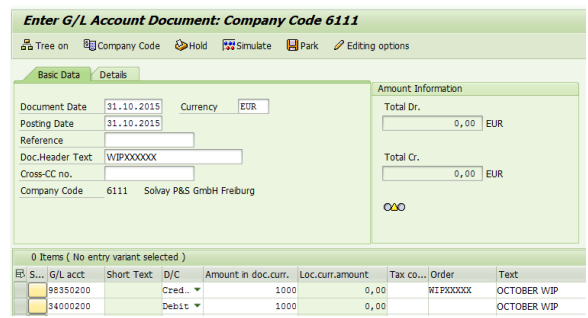
STEP 2

Post WIP journal using the following accounts:

Cost Account: 98350200
G/L Account: 34000200

Posting Keys

The cost account should be credited and the G/L account debited.



Enter G/L Account Document: Company Code 6111

Tree on Company Code Hold Simulate Park Editing options

Basic Data Details

Document Date: 31.10.2015 Currency: EUR
Posting Date: 31.10.2015

Reference: _____
Doc.Header Text: WIPXXXXXX
Cross-CC no.: _____
Company Code: 6111 Solvay P&S GmbH Freiburg

Amount Information:
Total Dr.: 0,00 EUR
Total Cr.: 0,00 EUR


0 Items (No entry variant selected)

| Ev | S... | G/L acct | Short Text | D/C | Amount in doc.curr. | Loc.curr.amount | Tax co... | Order | Text |
|----|------|----------|------------|-------|---------------------|-----------------|-----------|-----------|-------------|
| | | 98350200 | | Cred. | 1000 | 0,00 | | WIPXXXXXX | OCTOBER WIP |
| | | 34000200 | | Debit | 1000 | 0,00 | | WIPXXXXXX | OCTOBER WIP |



The cost account must have a cost object assigned which will be the order that was previously calculate as Work in Progress (WIP).

Post the journal to the closing month (M)

Save the document clicking on  and you will get the document number that you have just posted.

! Reverse WIP

After posting the Work in Progress you must reverse it on following month. Ensure that next step is also done.

Tasks to be completed when documenting an SAP Transaction, Report or Message code.

1. Title of the page = SAP Transaction code, SAP Report or SAP Message
2. Add the following Labels, respectively:
 - SAP Transaction => "sap_transaction"
 - SAP Report => "sap_report"
 - SAP Message => "sap_msg"
3. On the left section, describe the steps. On the right section, insert respective print screens and additional guidelines, if needed (e.g. Main selections of the transaction...)

i Reverse´s booking date

| Previous posting was done in | Reverse is to do in |
|---|--|
| Current period | Same day as the previous posting |
| Closed period | The closed period cannot be opened then the reversal has to be done as soon as possible in the current (open) period |
| Current period and in a different currency from EUR | Same day as the previous posting and with the same currency rate |
| Closed period and in a different currency from EUR | First day of the open period or day of the reverse posting with the same currency rate |

Cases of reverse:

- Wrong posting in the current period

- Wrong posting in a closed period
- Reverse of accrual
- etc

STEP 1

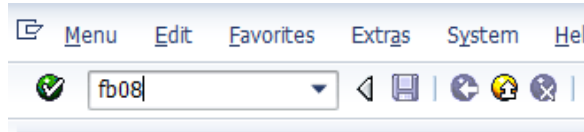
Use transaction code:

i FB08 - Reverse Document: Initial Screen

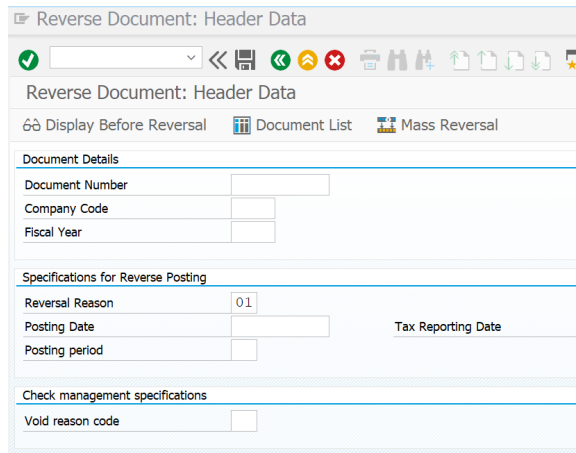
! If one item in the previous posting is cleared, it is not possible to reverse it. You have to reset the cleared item or use the transaction **FBR2**.

! The system does automatically clear the cancelled items when we use this transaction (FB08).

Enter the transaction name in the SAP command field:



Next screen opens:



STEP 2

Select the document to be reversed

! You can display the reversal before saving, if you wish to confirm you are reversing the correct entry.

Fill in the following fields:

| | |
|-------------------------|---|
| Document number | Document number that has to be cancelled / reverse |
| Company code | Concerned company code |
| Fiscal Year | Is always the current fiscal year |
| Reversal reason | Reverse reason (with the match code) |
| Posting date | Reverse posting date |
| Posting period | Period is automatically adapt with the posting date |
| Void reason code | Is not a mandatory field (with the match code) |

STEP 3

Save the reverse document by clicking on 

Enter the barcode if it is required:

- Document
- company code
- period
- reversal reason

Reverse Document: Header Data

Reverse Document: Header Data

Display Before Reversal Document List Mass Reversal

Document Details

| | |
|-----------------|-----------|
| Document Number | 160000594 |
| Company Code | 4056 |
| Fiscal Year | 2024 |

Specifications for Reverse Posting

| | | |
|-----------------|----|--------------------|
| Reversal Reason | 01 | Tax Reporting Date |
| Posting Date | | |
| Posting period | | |

Check management specifications

| | |
|------------------|--|
| Void reason code | |
|------------------|--|

STEP 4

Check other transactions to reserve documents

Other document reverse transactions:

- [FBR2 - Post Document](#)
- [F.80 - Mass Reversal of Documents](#)
- [FBU8 - Reverse Cross-Company Code Transaction](#)

KKAX

Transaction KKAX can be also used to calculate the WIP when you want to do it for a single order. This is not quite usual once we have KKAO that give us all orders that are WIP.

If all orders were balanced for closing month means that this task has been successfully executed.