

Update SID License

SAS is a software with an annual license, which must be updated at least once a year.

To update the SAS platform, it is necessary to perform several actions with the SDM SAS Deployment Manager tool

Step-by-step guide

1. Prevent users from stopping the SAS platform
2. Stop service in the correct order on all machines
3. SDM : Renew SAS Software
4. SDM : Update SID File in Metadata
5. Start services in the correct order on all machines
6. Launch SAS Lasr Server for SAS Visual Analytics (VA)
7. Check platform

In this description Server name depend of SAS environnement to update, in this chapter screenshot it's for DEV environnement

Step 1 : Prevent users

Prevent users from stopping the SAS platform and its unavailability at least 10 minutes before the operation.

Via email and Hangout group Torrelavega Analytics

Step 2 : Stop service in the correct order on all machines

STEP 2.1 : RDP Web Server

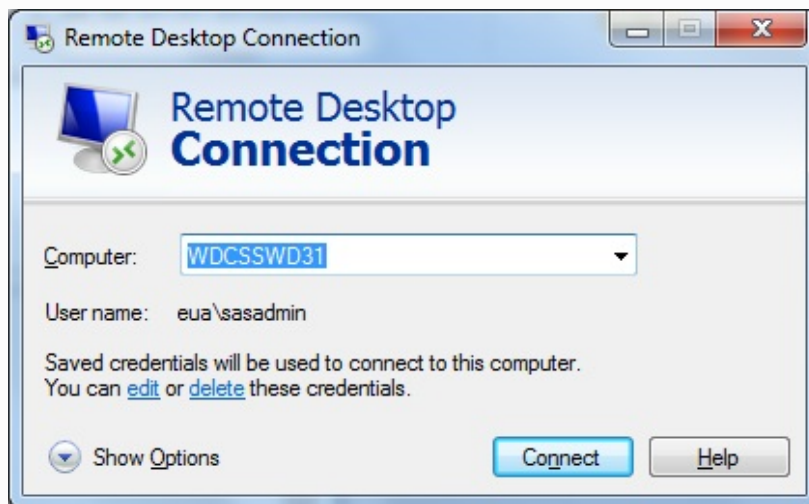
Connect to Web Server Tier via RDP, with an account had administrator privileges

Computer : wdcswd31

User name : eua\admin_accou
unt

Password: *****

Connect

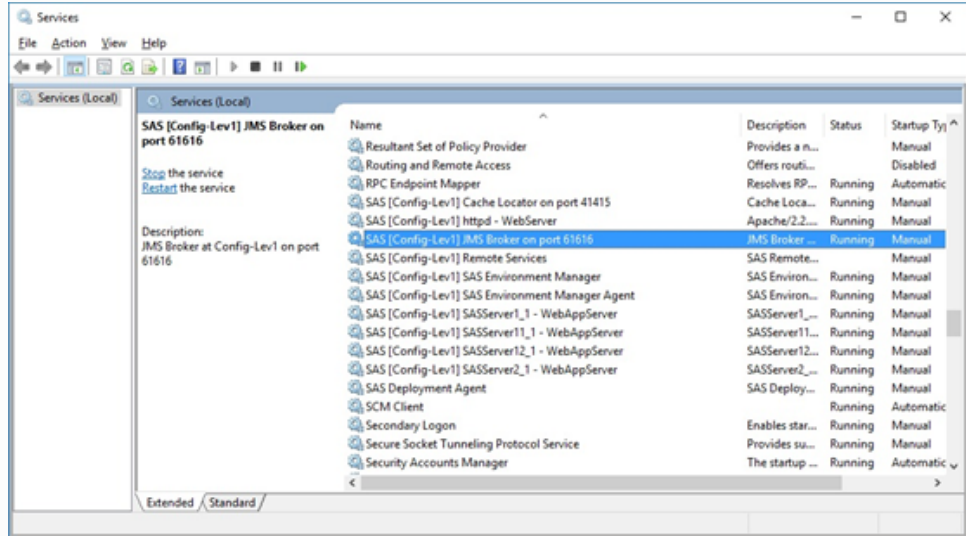


STEP 2.2 : Services Web Server

Check SAS services on Web Server

Stop manually all SAS services in the correct order:

- SAS Deployment Agent
- SAS Environment Manager Agent
- SAS Environment Manager
- SASServer1_1 - WebAppServer
- SASServer11_1 - WebAppServer
- SASServer12_1 - WebAppServer
- SASServer12_1 - WebAppServer
- SASServer12_1 - WebAppServer
- SASServer12_1 - WebAppServer
- httpd-WebServer
- Cache Locator on port 41415
- JMS Broker on port 61616



STEP 2.3 : RDP Application Server

Connect to Application Server Tier via RDP, with an account had administrator privileges

Computer : wdcssad31

User name : eua\admin_accout

Password: *****

Connect

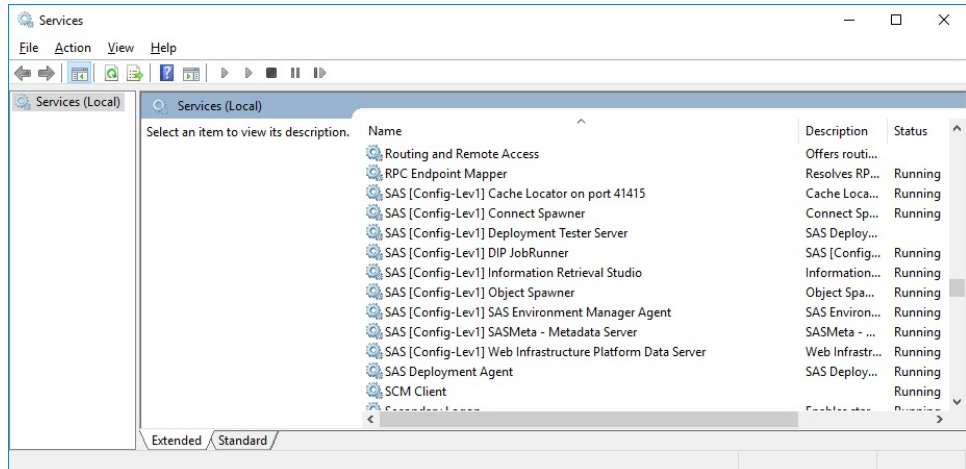


STEP 2.4 : Services Application Server

Check SAS services on Application Server

Stop manually all SAS services in the correct order:

- SAS Deployment Agent
- SAS Environment Manager Agent
- Cache Locator on port 41415
- DIPJobRunner
- Deployment Tester Server
- Information Retrieval Studio
- Connect Spawner
- Object Spawner
- Web Infrastructure Platform Data Server
- SASMeta - Metadata Server



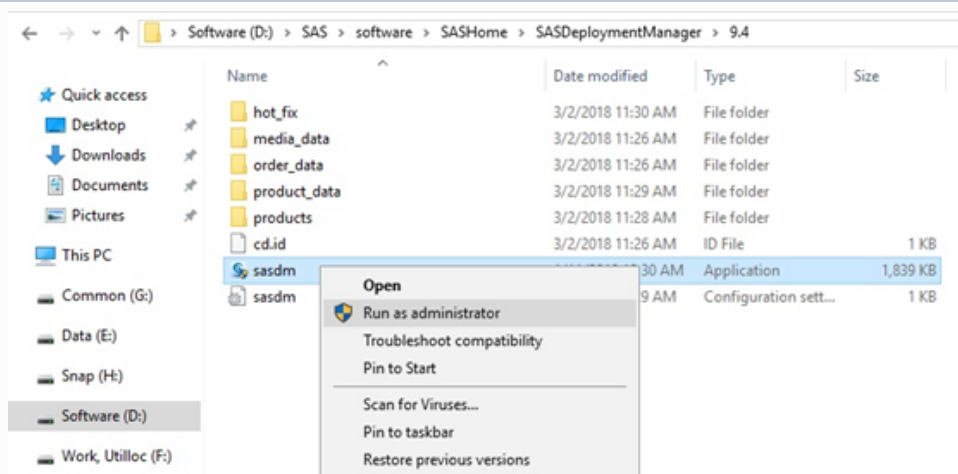
Step 3 : SDM Renew SAS Software

STEP 3.1 :Find and launch SDM with admin privilege

Go to SASHome and find sasdm.exe

D:
\\SAS\software\SASHome\SAS
DeploymentManager\9.4\
sasdm.exe

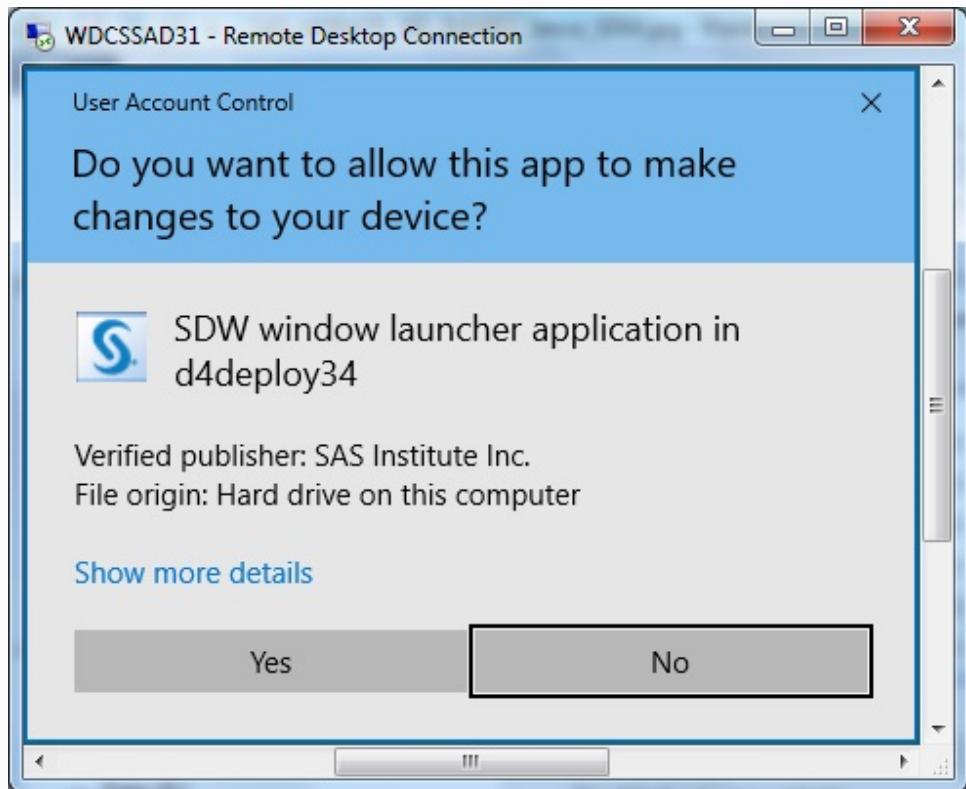
Run as administrator



STEP 3.2 : User account control

Allow this app

Yes



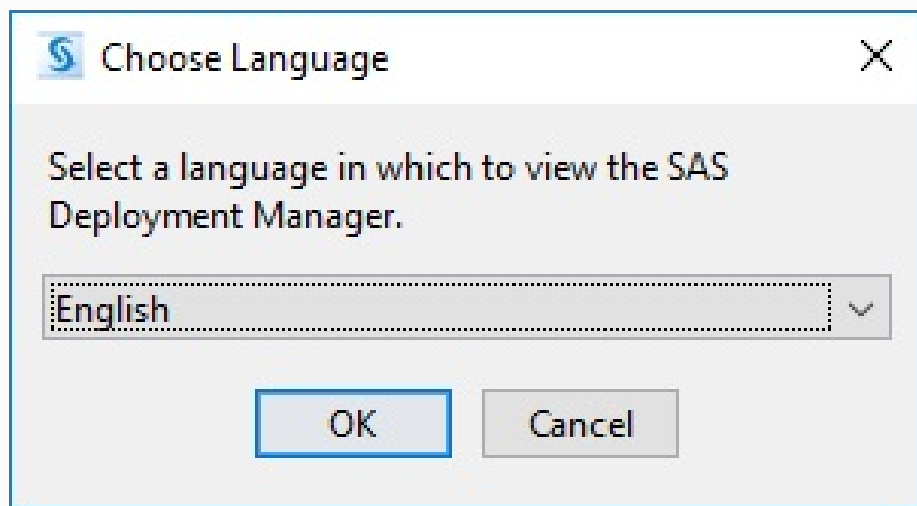
STEP 3.3 : SDM started



STEP 3.4 : Choose Language

english

OK



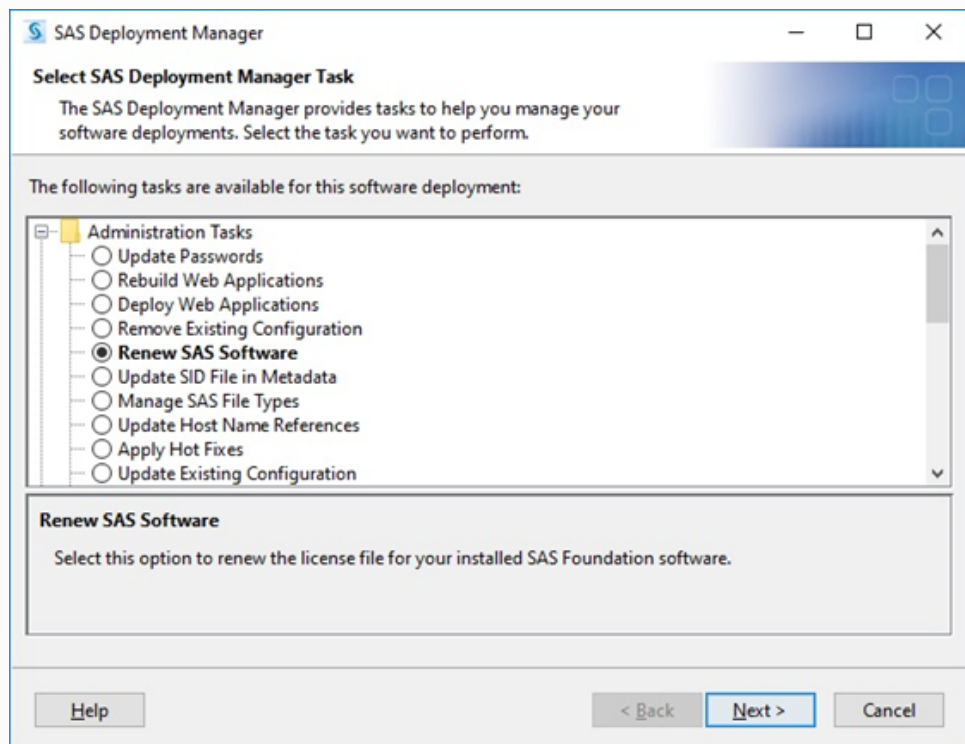
STEP 3.5 : SDM initialized with selected language



STEP 3.6 : Select SAS deployment Manager Task:

Renew SAS Software

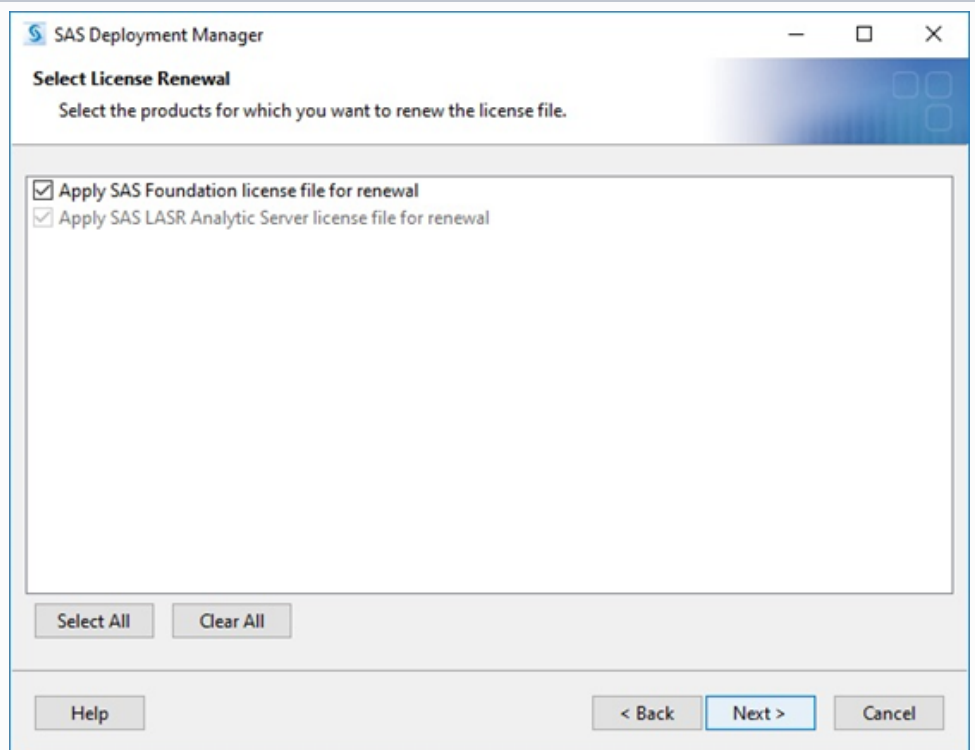
Next



STEP 3.7 : Select License Renewal :

Select All

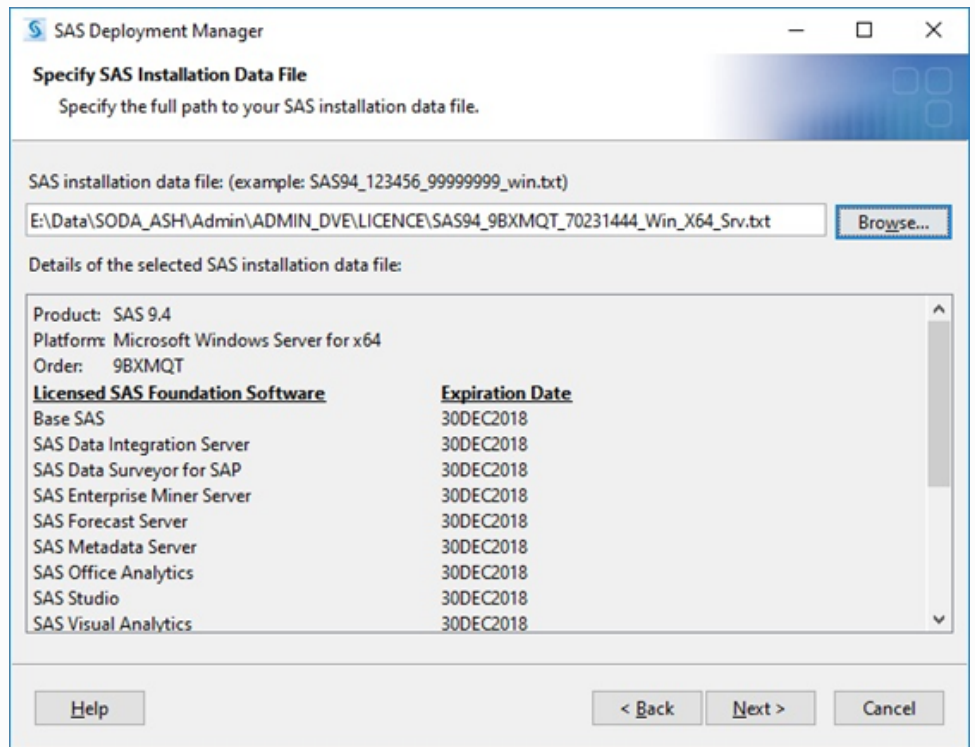
Next



STEP 3.8 : Specify SID (SAS Installation Data) File location

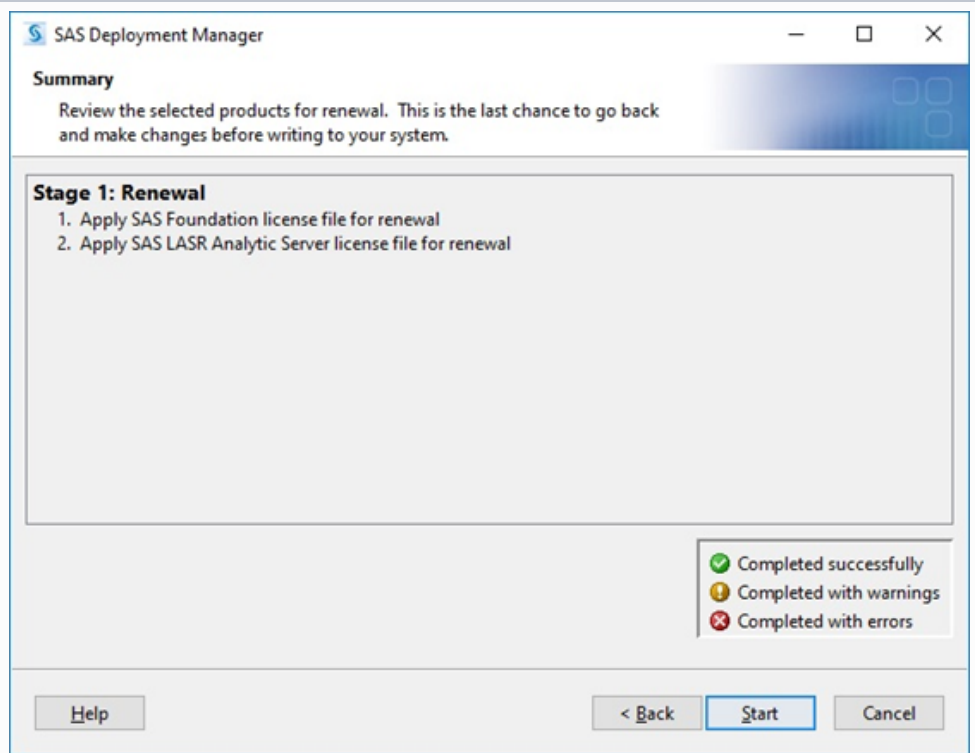
Select path With new License on the server

Next



STEP 3.9 : Summary of STEP and tool update

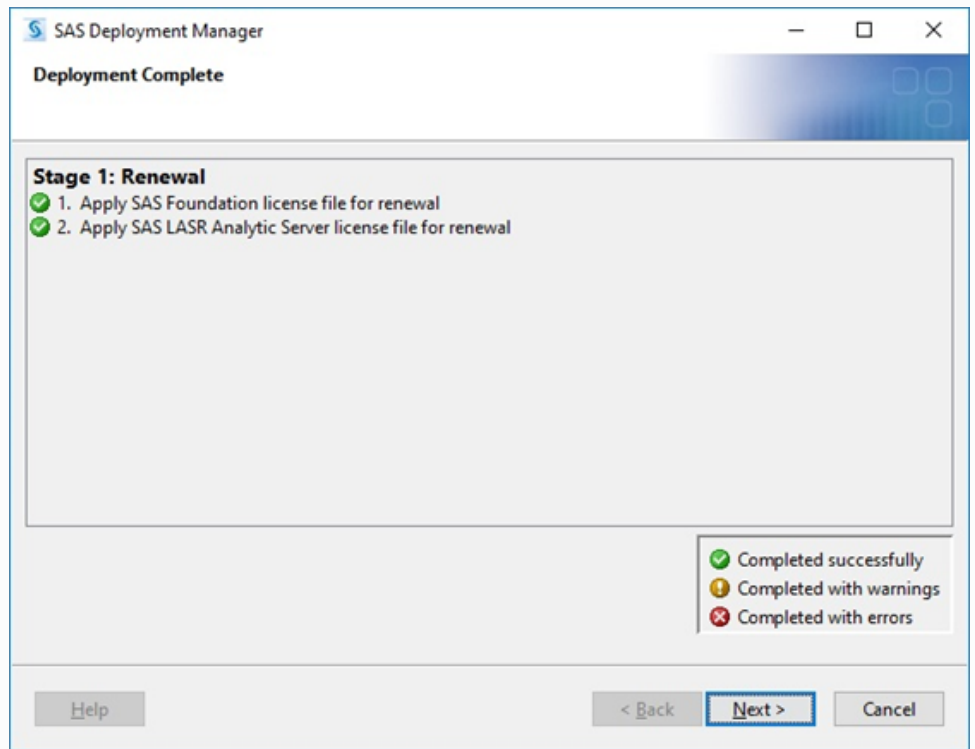
Start



STEP 3.10 : Deployment complete

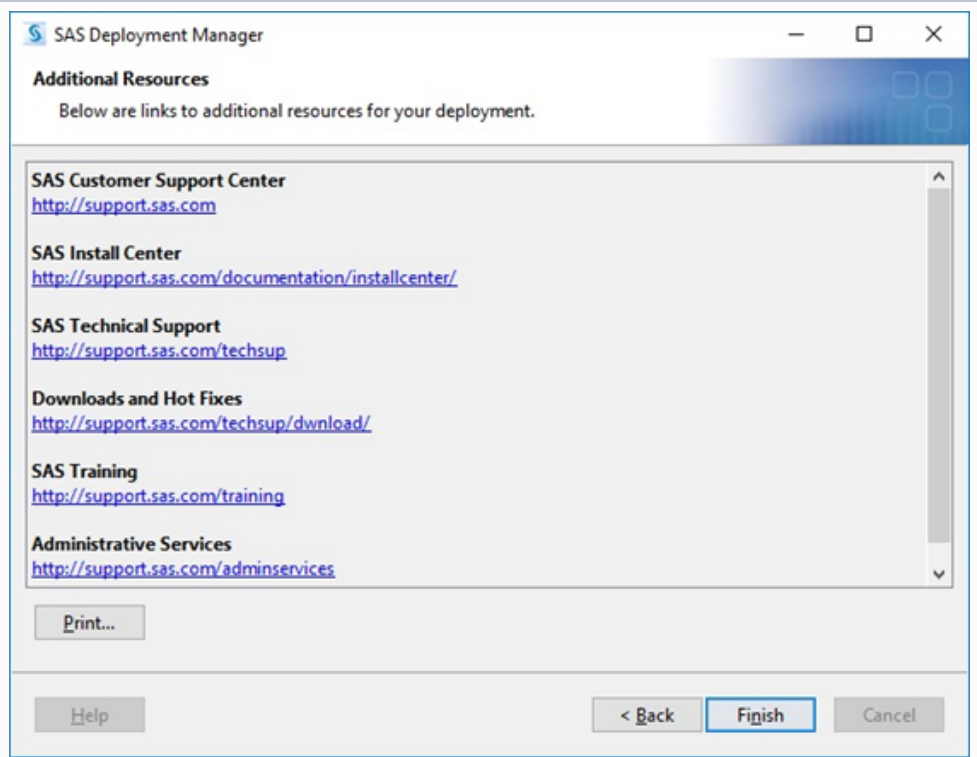
Check if all it's OK

Next



STEP 3.11: Additional Resources

Finish



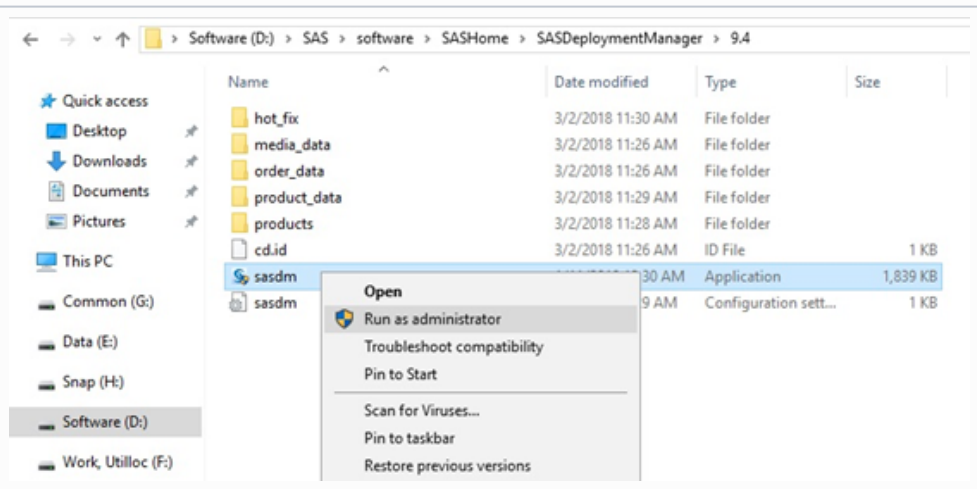
Step 4 : SDM Update SID File in Metadata

STEP 4.1 :Find and launch SDM with admin privilegeon

Go to SASHome and find sasdm.exe

D:
\\SAS\software\SASHome\SAS
DeploymentManager\9.4\
sasdm.exe

Run as administrator



STEP 4.2 : User account control

Allow this app

Yes



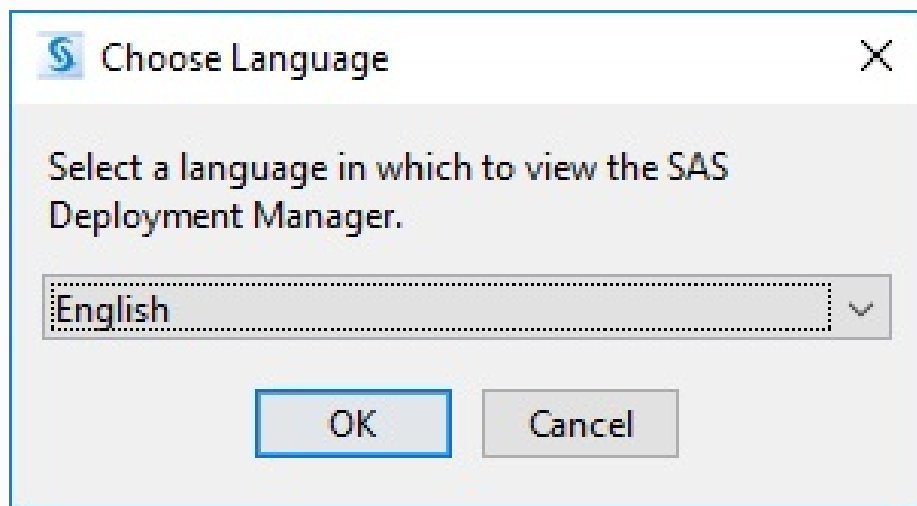
STEP 4.3 : SDM initialized with selected language



STEP 4.4 : Choose Language

english

OK



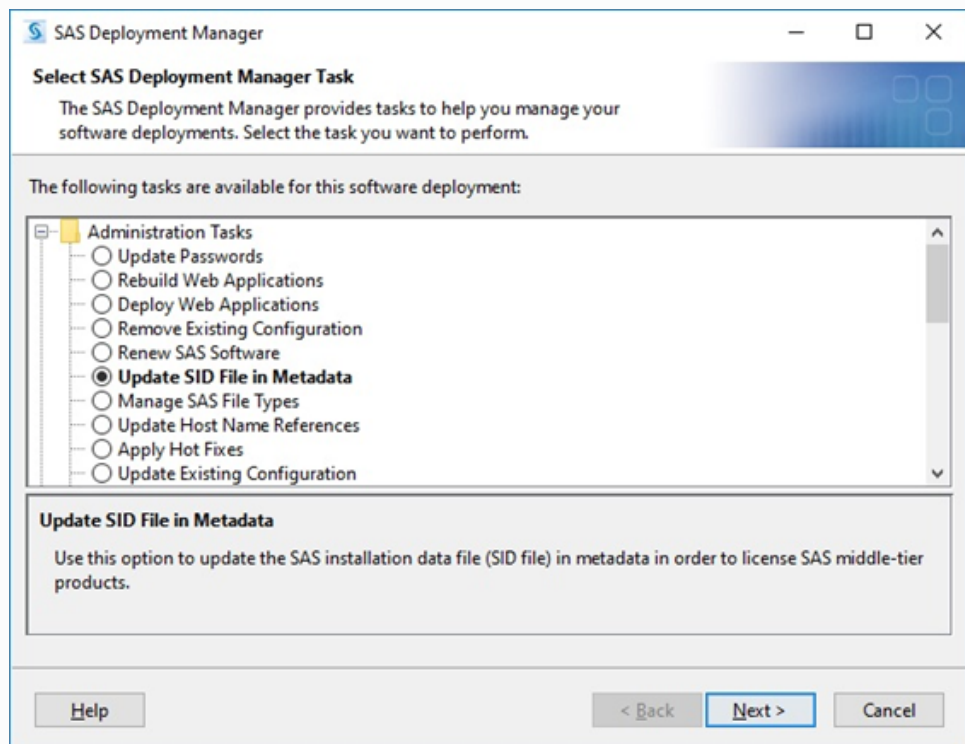
STEP 4.5 : SDM initialized with selected language



STEP 4.6 : Select SAS deployment Manager Task

Update SID File in Metada

Next



STEP 4.7 : Select Configuration Directory/Level

Select Directory: by default

D:\SAS\software\Config

Configuration level

Lev1

Next

SAS Deployment Manager

Select Configuration Directory/Level

Select the configuration directory and the level within the configuration directory to manage.

Select Configuration Directory

Configuration Directory	Configuration Level
D:\SAS\software\Config	Lev1

Enter Configuration Directory and Level

Configuration Directory:

Configuration Level:

STEP 4.8 : Specify Connection Information

User ID :

sasadm@saspw

Password :

Next

SAS Deployment Manager

Specify Connection Information

Specify connection information to the SAS Metadata Server.

Host Name:

Port:

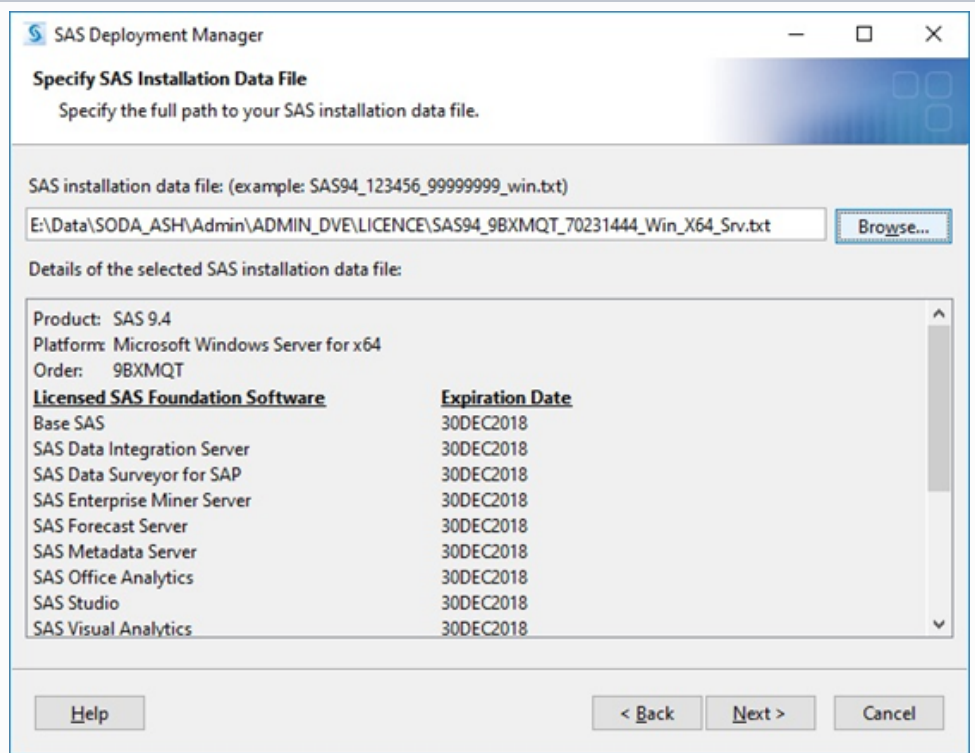
User ID:

Password:

STEP 4.9 : Specify SID (SAS Installation Data) File location

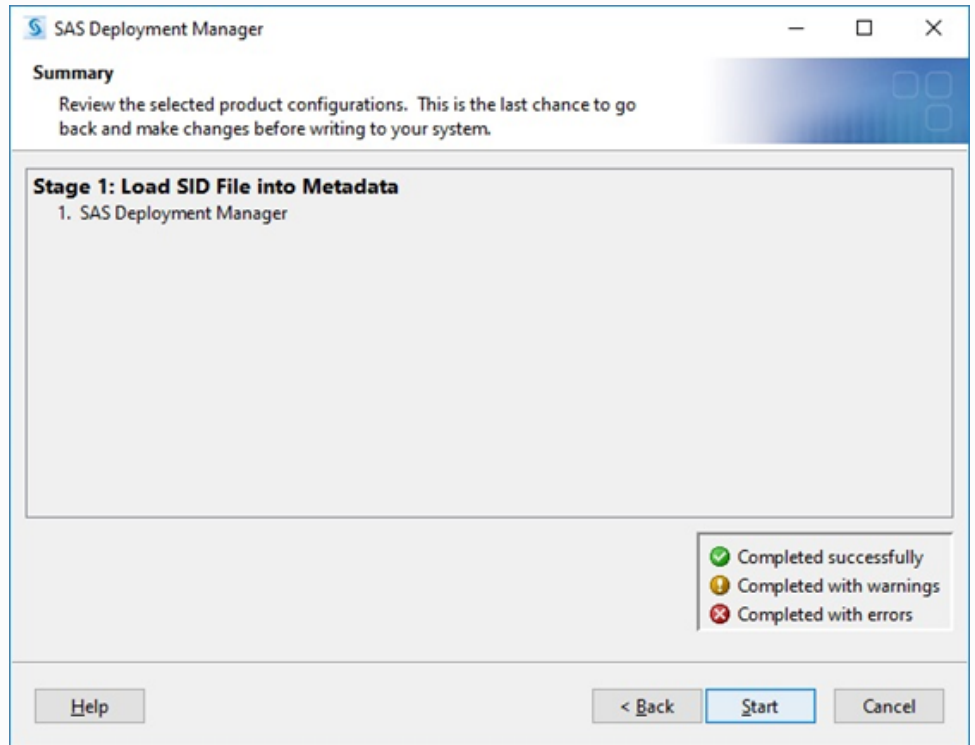
Select path With new License on the server

Next



STEP 4.10 : Summary of STEP and tool update

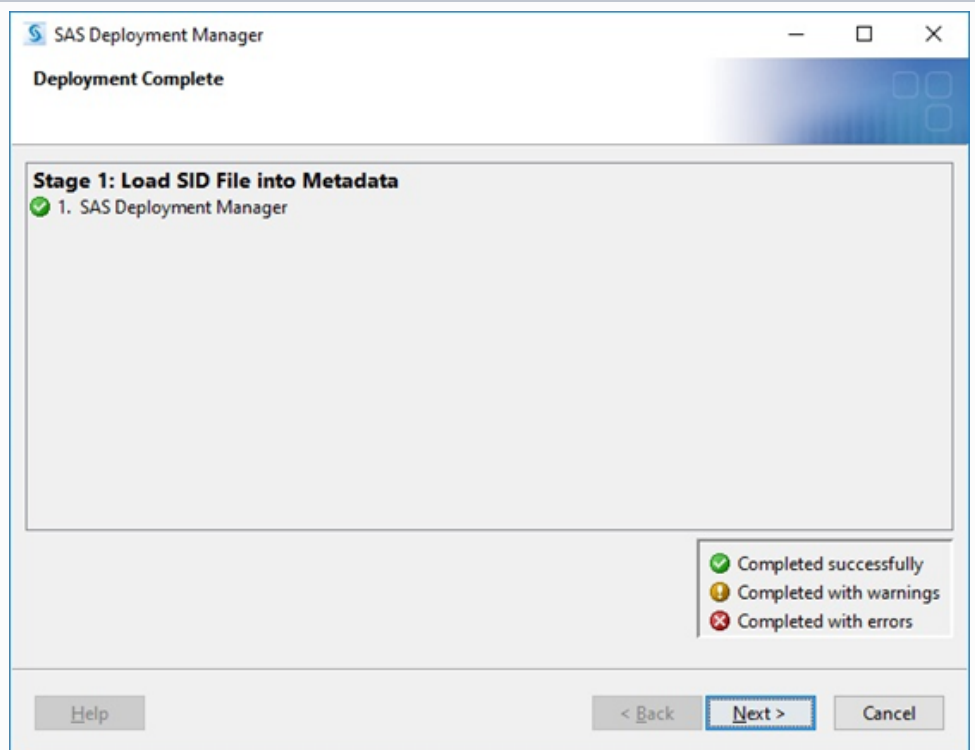
Start



STEP 4.11 : Deployment complete

Check if all it's OK

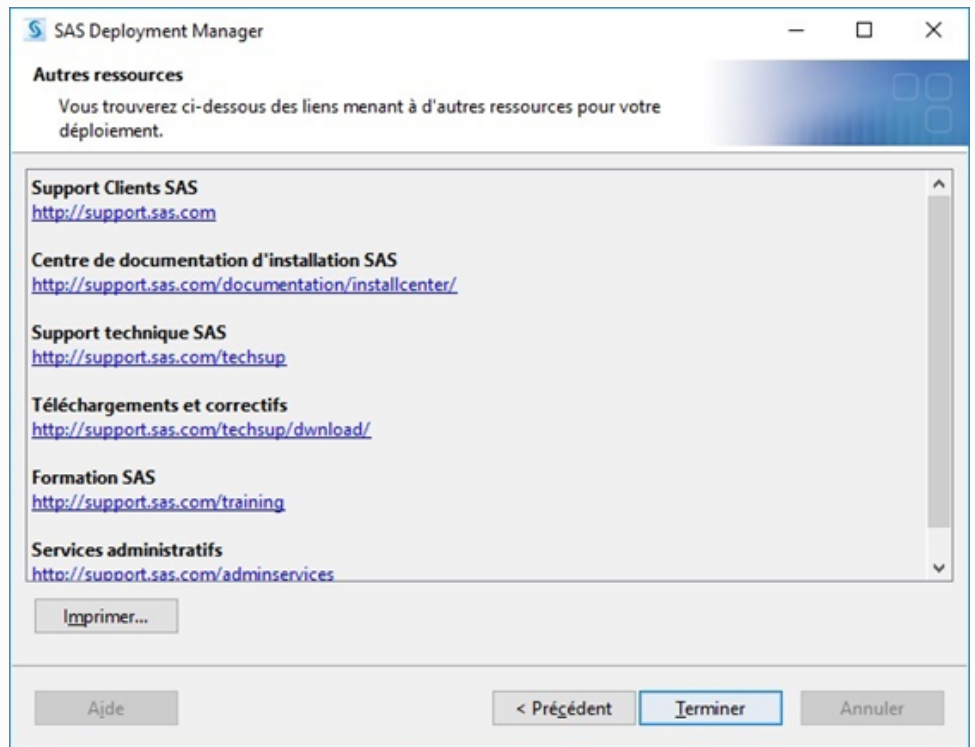
Next



STEP 4.12:

Additional Resources

Finish

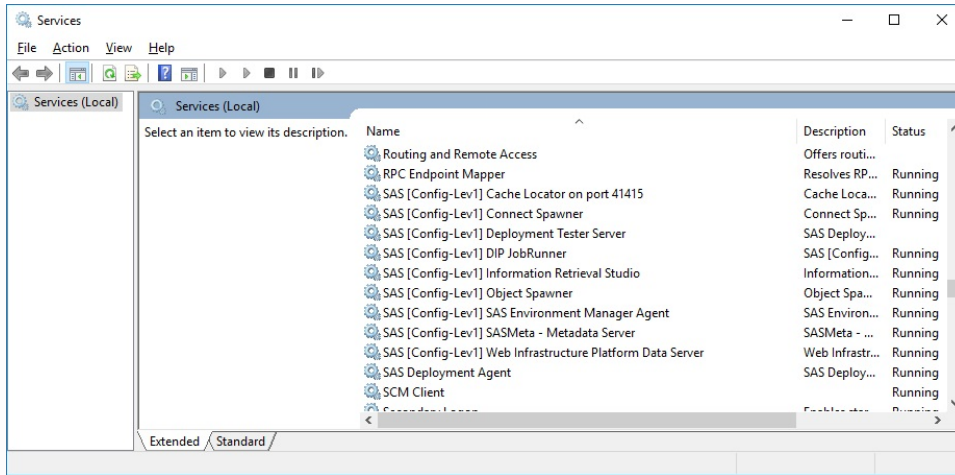


Step 5 : Start services in the correct order on all machines

--	--

ST
EP
5.1
:
Sta
rt
Ser
vice
s
on
App
licati
on
Server

Ch
eck
SAS
ser
vice
s
on
App
licati
on
server

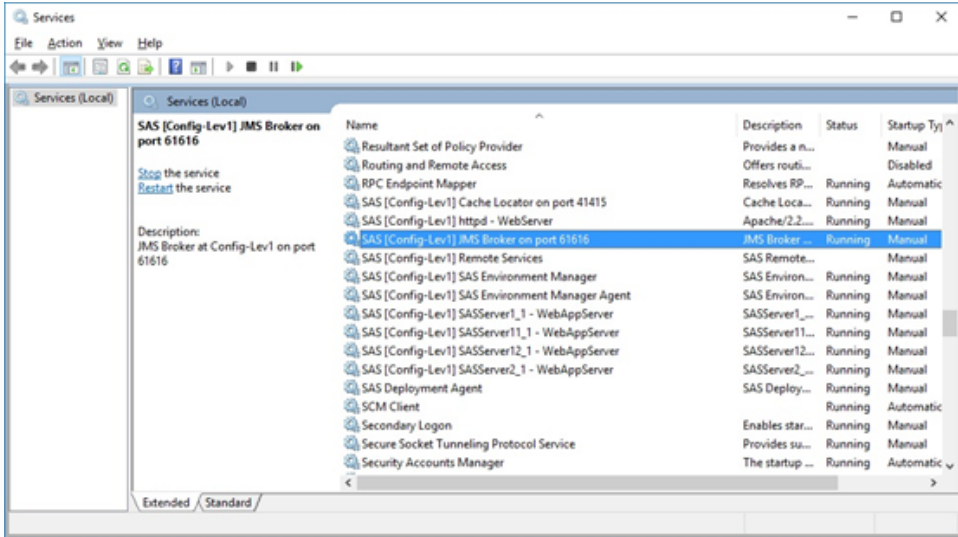


Sta
rt
ma
nu
ally
all
SAS
ser
vice
s
in
the
corr
ect
ord
er:

- SAS Meta
- Metadata Server
- Web Infrastructure Platform Data Server
- Object Spawner

Co
nne
ct
Spa
wn
er
-
Info
rma
tion
Ret
riev
al
Stu
dio
-
De
plo
ym
ent
Tes
ter
Ser
ver
-
DIP
Job
Ru
nner
-
Cac
he
Loc
ator
on
port
414
15
-
SA
S
Env
iron
me
nt
Ma
nag
er
Age
nt
-
SA
S
De
plo
ym
ent
Age
nt
or
Re
boo
t
App
licat
ion
ser
ver

ST
EP
2.2
:
Str
at
Ser
vice
s
We
b
Ser
ver



Sta
rt
ma
nu
ally
all
SA
S
ser
vice
s
in
the
corr
ect
ord
er:

-
JM
S
Bro
ker
on
port
616
16
-
Cac
he
Loc
ator
on
port
414
15
-
htt
p
d-
We
bSe
rver
-
SA
SS
erv
er1
2_1
-
We
bAp
pSe

```
rver
-
SA
SS
erv
er1
2_1
-
We
bAp
pSe
rver
-
SA
SS
erv
er1
1_1
-
We
bAp
pSe
rver
-
SA
SS
erv
er1
_1
-
We
bAp
pSe
rver
-
SA
S
Env
iron
me
nt
Ma
nag
er
-
SA
S
Env
iron
me
nt
Ma
nag
er
Age
nt
-
SA
S
De
plo
ym
ent
Age
nt
```

Step 5 :Launch SAS Lasr Server for SAS Visual Analytics (VA)

When the service Platform restart, it will be necessary to start SAS LASR server for Visual Analytic.

- Open URL VA : http://wdcswd31.eua.solvay.com/SASLogon/logout?_sasapp=Visual+Analytics+Hub+7.4
- Connect and open Administrator page: SAS Home > Administrator
- Select Tab "LASR Sever" or open it in the menu LASR > Manage Servers
- Check if Servers is started, and if not, select all and start them

Step 6 : Check Platform

- Check SAS Enterprise Guide
 - Open SEG and execute a simple code like : `proc setinit; run;`
- Open VA and check if LASR server are started

Related articles

- [Update SID License](#)
- [SAS Platform](#)