

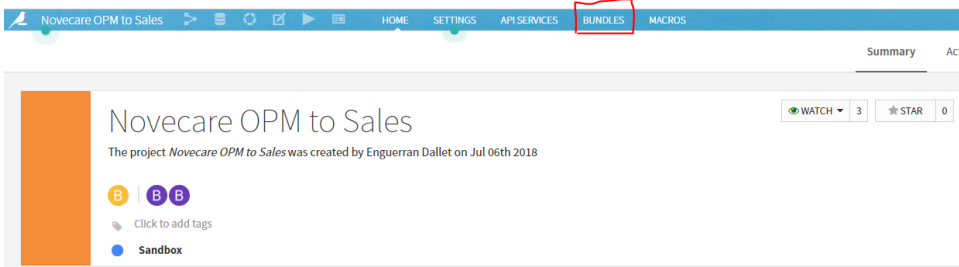
# Pass an application into production

## 1. Clean your flow and document your project.

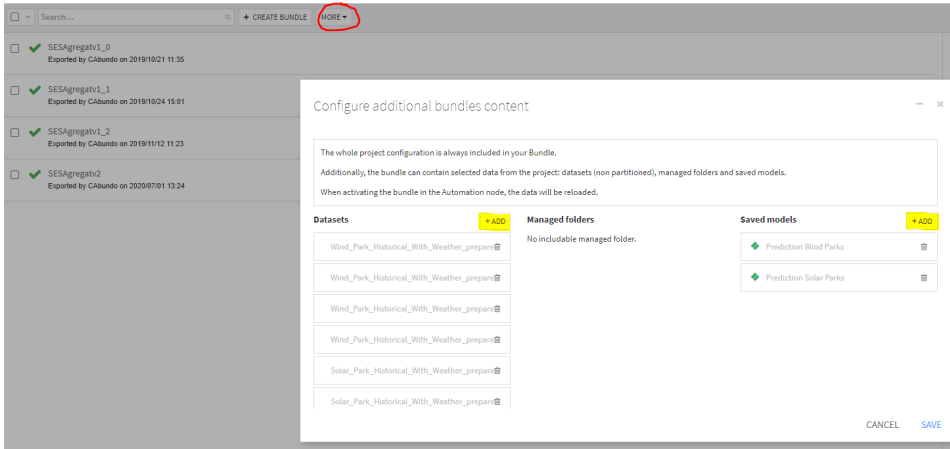
Make sure that only the necessary data sets and recipes subsist and that your code is documented sufficiently. You want your project to be as easily understandable by someone else (or by yourself in the future) as possible. Do not forget to remove any useless Dashboard (all projects start with one by default)

## 2. Prepare bundle

On the project main page click on bundles

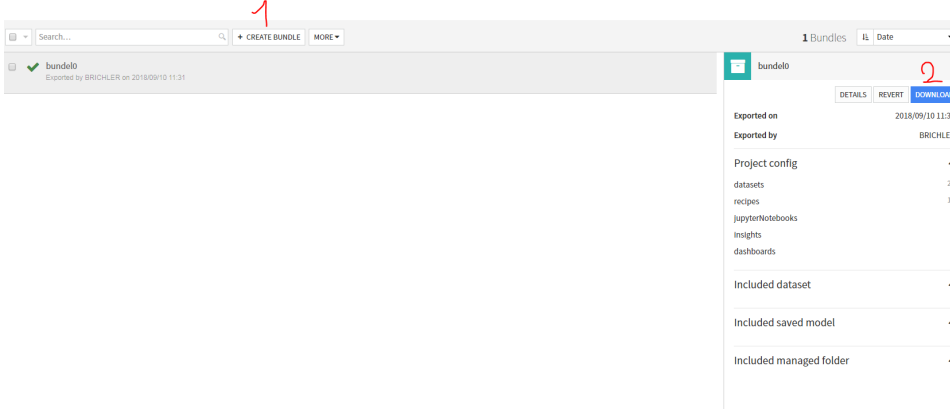


Click on More and Configure bundle contents to add any intermediate datasets, folders and models you would want to copy over. Save afterwards.



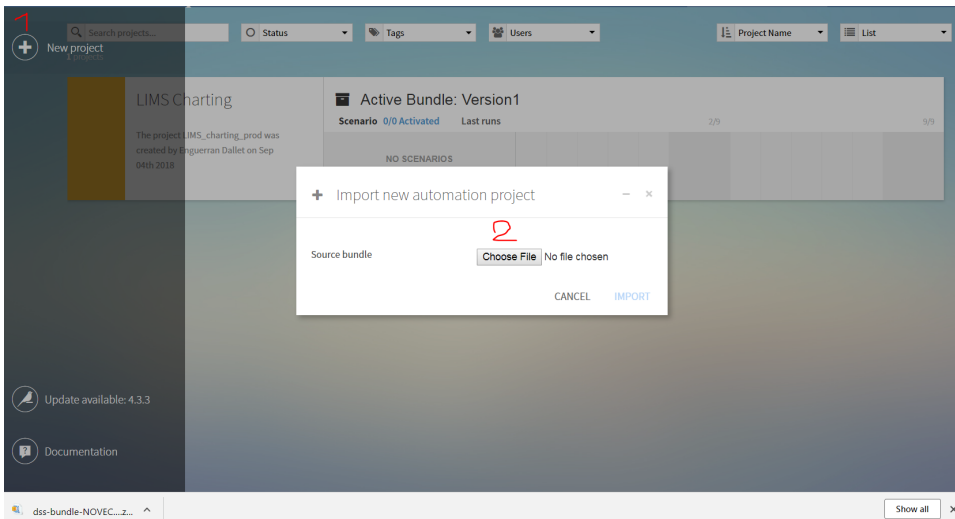
## 3. Create a bundle

Create name and finally download the bundle

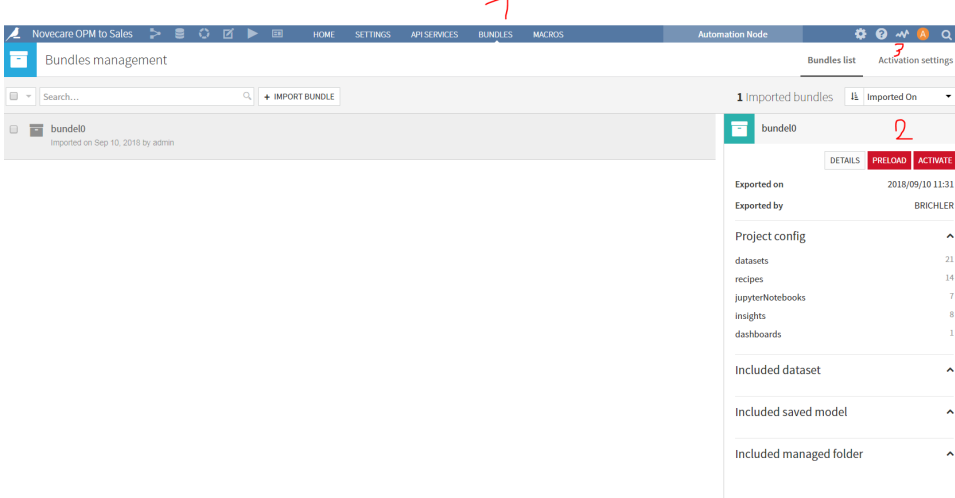


## 4. Import your bundle file to the automation node

On the automation node, create a new project, upload the bundle you just downloaded from the design node and export the project.



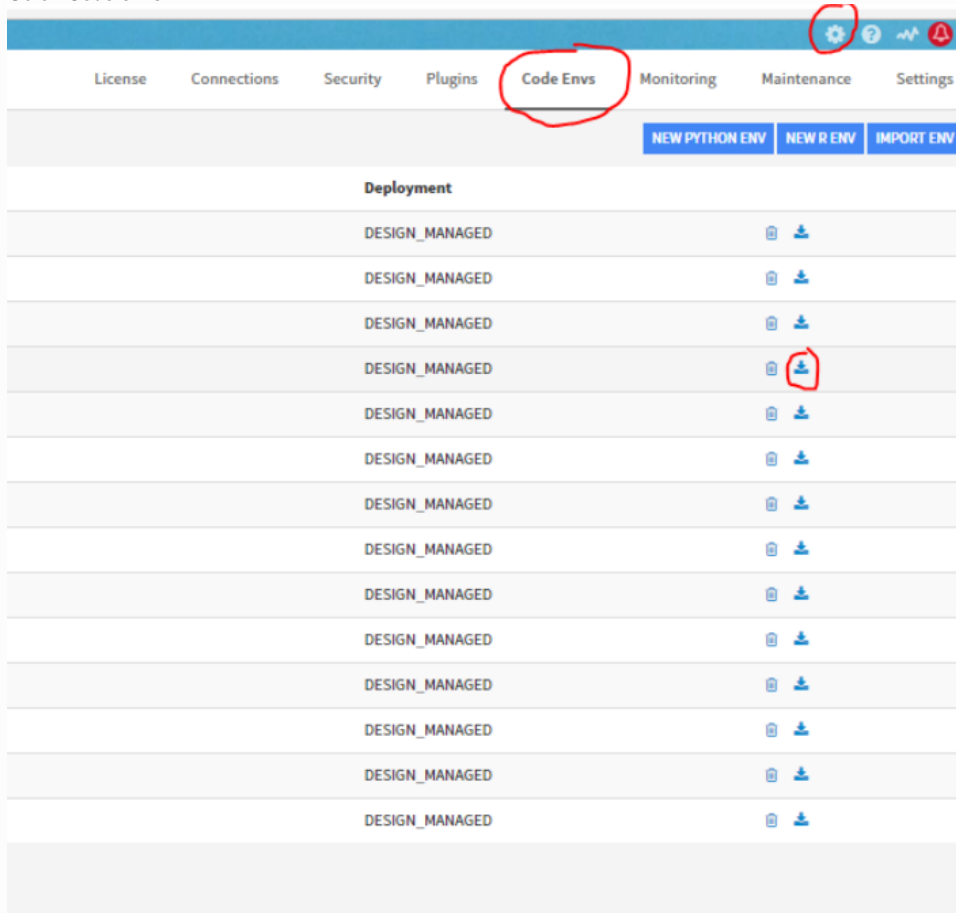
If you now go to the project bundles tab, you will have the option to preload or activate your bundle.



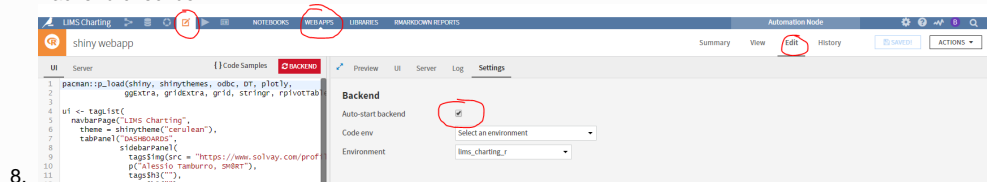
Finally, make sure that the same connections are there (or remap them when importing the project in **advanced settings**)  
Make also sure that the same environment is in the automation node, if not you will have to import it:



1. In the design node Go on Administration
2. Go on Code envs



3. Download the code env.
4. Go on the automation node
5. Go on administration
6. Import the env clicking on Import Env Button
7. If it is a webapp do not forget to put the backend in Auto Start by going into the webapp / edit / settings and ticking the Auto-Start Backend checkbox



8.

## Related articles

- [ALB Data Enrichment - Add new data transformation in the Presentation Layer](#)
- [ALB Data Ingestion - Add new data to the data lake](#)
- [ALB Operational - deploy to Production](#)
- [Writing a simple BW query](#)
- [Retrieving columns and variables names for a BW query](#)