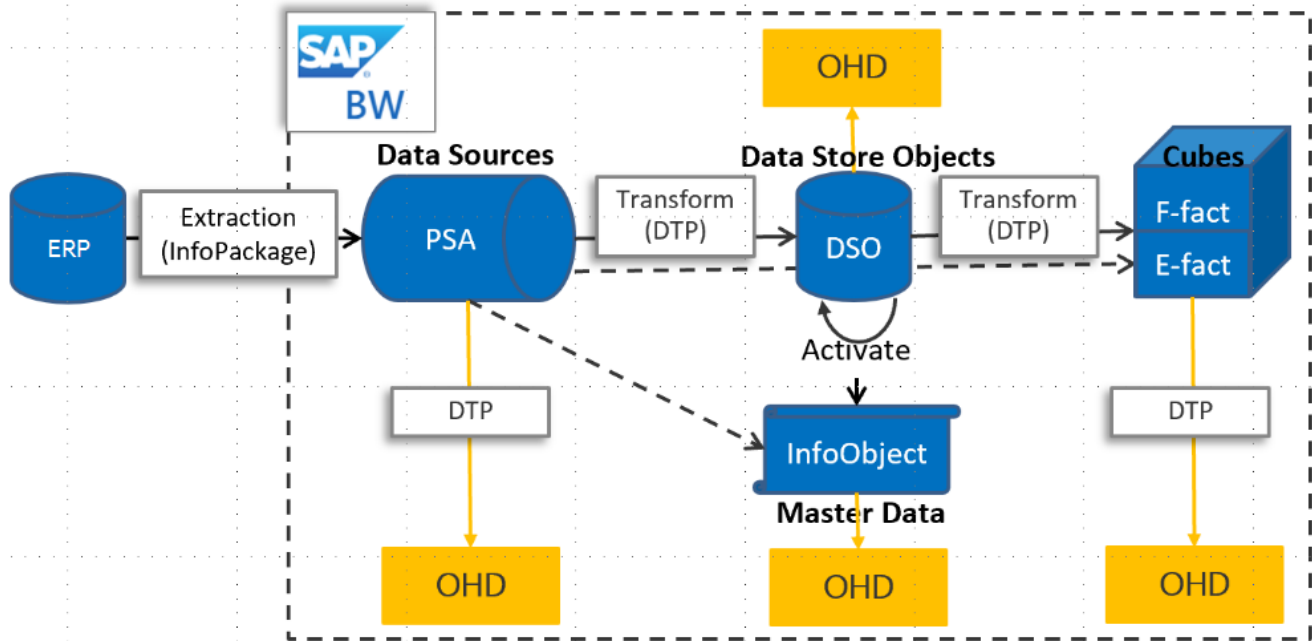


BW Open Hub Destination

BW Open Hub Destination is a way to extract data from SAP BW. The following diagram shows a typical flows from ERP system to BW system

PSA -> DSO -> Cube.



BW Open Hub Destination (OHD) defines the target to which the SAP data is relayed.

Any objects supported by Data Transfer Process (DTP) can be used as Open Hub DataSources, for example, DSO, InfoCube, DataSource.

Open Hub Destination type, where the relayed data is stored, can be Database Table (local or remote) and Flat File.

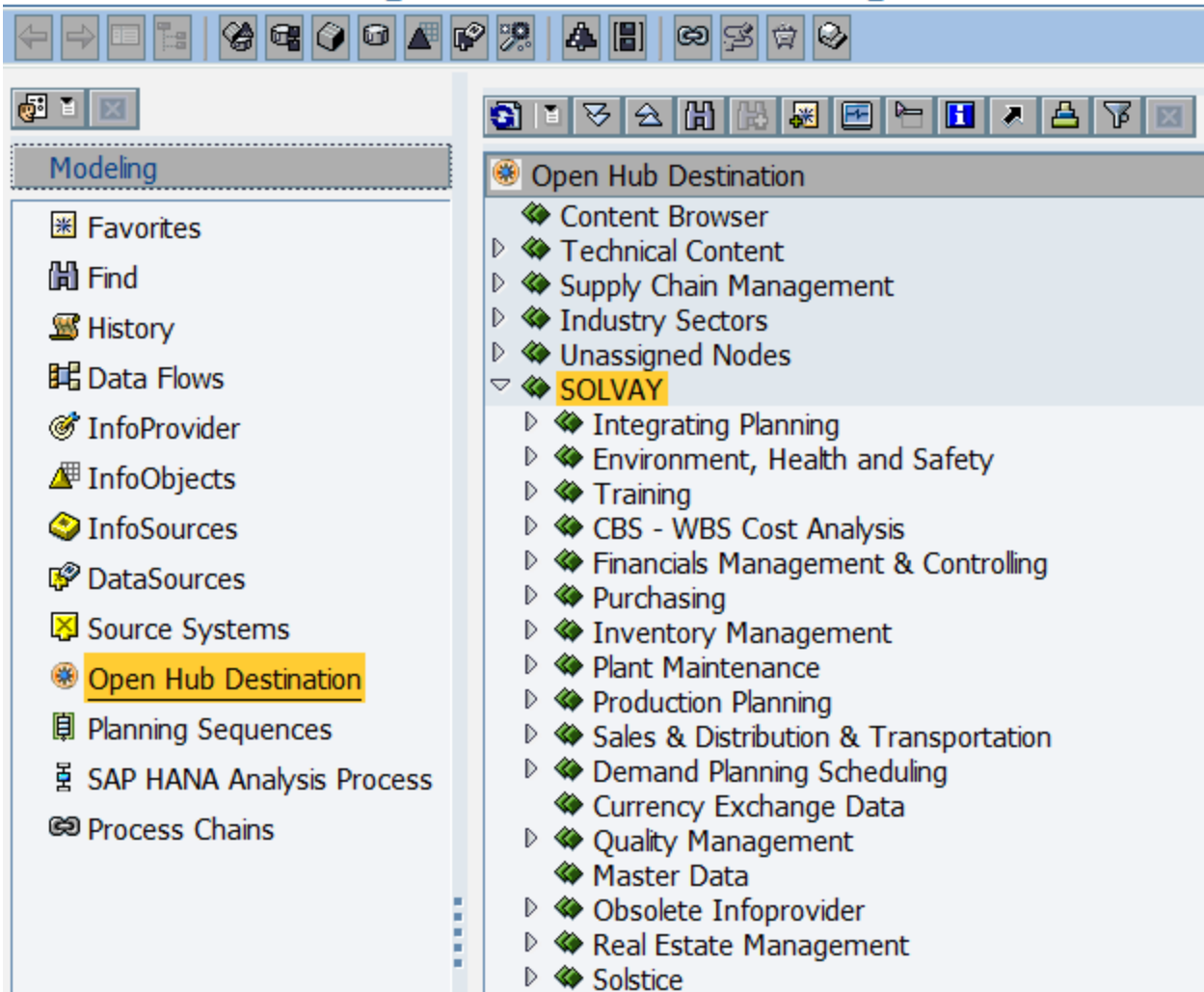
This BW Open Hub connector support copying data from OHD local table in BW.

In case you are using other types, you can directly connect to the database or file system using other connectors.

Open Hub Destination in Solvay

Transaction RSA1

Data Warehousing Workbench: Modeling



The source of Open Hub

1. Query:

Query source of OHD must set properties on RSRT to; tech name has to be max 20 char

Query Monitor

Execute Execute + Debug Generate Query Properties
 Performance Info Technical Information Cache Monitor

Query **BW_QRY**

Query Display **ABAP B**



variable_screen=X

< >

URL

Query Properties

- Data Integrity Profile: Default: No profile (expert settings are used) InfoProvider Setting
- Read Mode: H Query to read when you navigate or expan... InfoProvider Setting
- Cache Mode: D Cache in database InfoProvider Setting
- Cache Usage Mode: Data from query start if possible, otherwise c...
- InfoProvider Grouping: 1 Grouping depending on InfoProvider types InfoProvider Setting
- Use Selection of Structure Elements InfoProvider Setting
 - Also Read Child Members InfoProvider Setting
 - Calculate with High Precision InfoProvider Setting
 - No Parallel Processing InfoProvider Setting
 - Calculation of Commutative Formulas After Aggregation
- Operations in BWA/HANA: 6 Exception aggregation (default) InfoProvider Setting
- Materialize Intermediate Query Result InfoProvider Setting
- Query is used as InfoProvider
- OLAP Effort: 0 Default
- Generation Log
- Optimization Mode: 0 Query Will Be Optimized after Generation
- Optimization Periods: 0
- Statistics Details: 2 All