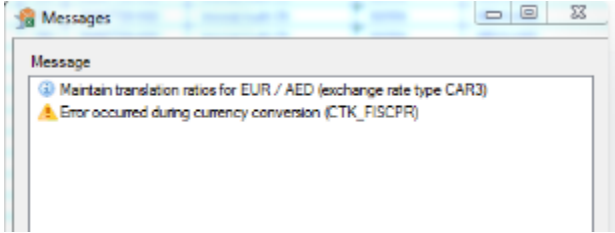


How to create and transport currency factor in BW system - TCURF #3457931

We have currency conversion issue, while running the report for CAR3 exchange rate type.

No translation ratio's have maintained for the mentioned currency pair for a month ex: 01/08/2019



Description	Maintain translation ratios for EUR/AED(Exchange rate type CAR3)
Technical Name	BW_QRY_MPR_FC001_0001
Application	Fixed Cost
Info-provider	MPR_FC001
Usage type	Analysys
Expected users	GBU Zone and all controllers

blocked URL

1) First check via the below program to test about the issue by proving Exchange rate and the currencies.

RCURTEST

Program RCURTEST						
Diagnosis of Currency Translation Customizing						
Date	EType	Fr.	To	TType	Ex.Rate	Error Message
01.08.2019	CAR3	EUR	AED			E SG111 Maintain translation ratios for EUR / AED (exchange rate type CAR3)

The error itself clearly say's that the "Translation ratio's for EUR/AED" have not maintained for exchange rate type CAR3

2) Check in TCURF table

Where the ratios have not maintained in TCURF table from EUR to AED, BUT we have for AED to EUR. So, We have to maintain EUR to AED ratio in TCURF table in order to fix this in OBP.

IMPORTANT for 90% of the translation the value is 1 1 but it could be 1 1000 so need to have the approval of finance and controlling team.

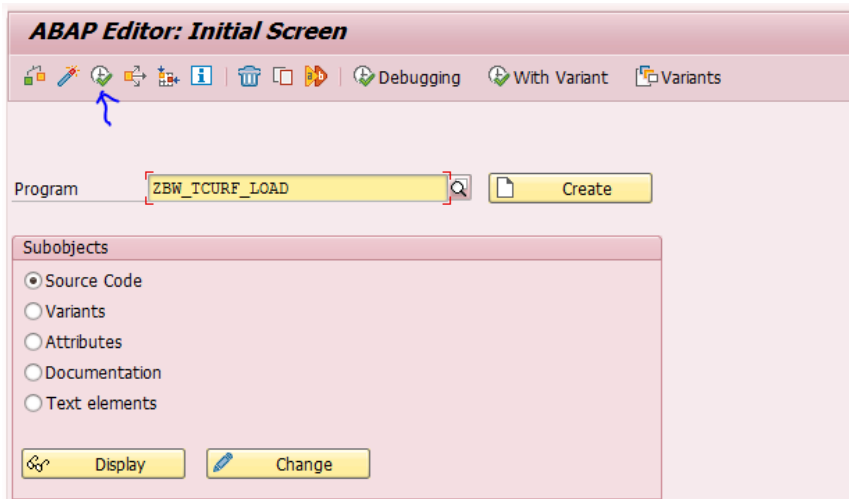
3) We have to upload the TCURF table by the (ZBW_TCURF_LOAD)program.

First we have to Create an excel file with ".xls" format with out headings, please find the below screenshot for reference + no space in the name (better) + not from too long folder 250 characters limitations.

G6				fx			
	A	B	C	D	E	F	G
1	400	CAR3	EUR	AED	81999898	1	1

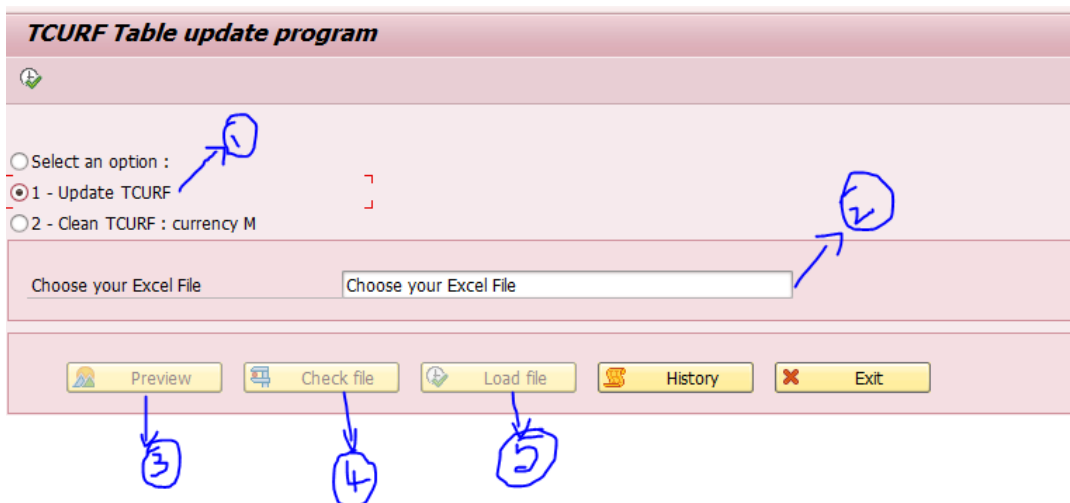
Note: Please uncheck the check box "Respect Conversion exit" to get the value instead of date like above(81999898). date stored at 9's complement format, you can take an example on the TCURF form WBP.

Go to SE38 Click on Execute



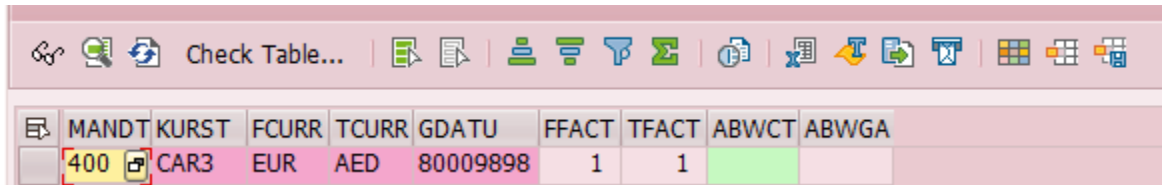
Follow the below steps:

- Select "Update TCURF"
- Choose your Excel file
- Click on "Preview" to check if we have any errors
- Click on "Check File"
- Click on "Load file"



After loading the file, we will get a message "File as been loaded".

Now, Go and Check TCURF table, Where the factors for EUR to AED are maintained.



MANDT	KURST	FCURR	TCURR	GDATU	FFACT	TFACT	ABWCT	ABWGA
400	CAR3	EUR	AED	80009898	1	1		

Another way to maintain factors is to transport the factors from OBD to OBQ to OBV and then to OBP by using the SPRO tcode.

https://help.sap.com/docs/SUPPORT_CONTENT/erphcm/3354687751.html

Although currencies are maintained in table TCURR, this table is not responsible for the inverse calculation as there is a technical difference between the generation of values between TCURR and TCURF,

this means the portal values are derived from TCURF as each currency also needs a reverse ratio calculation. So in this case, you need to also follow the IMG path;

[blocked URL](#)

Tcode SPRO > IMG > SAP Netweaver > General Settings > Currencies > Define translation ratios for currency translation**

Here, you should check the currency pairing and ensure that the same reverse ratio is entered, E.g pairing of USD:EUR/EUR:USD. You can also do this directly in view V_TCURR and V_TCURF via SM30

- You must also have an entry in each field Ratio for the "from" currency units and Ratio for the "to" currency units.
- Finally, please also have an entry for this pairing in TCURR.

It is important to note for TCURF, that this table is not keeping the exchange rates but is concerned only with ratios. These need to be maintained correctly only once.

The checks in the ABAP based WebDynpro Travel Application are far stricter than in transaction PR05 and therefore any dump or error occurring in portal if the ratio and pairings are not correctly defined will not occur in PR05.

[blocked URL](#)