

BW OTC - PQ1 vs BI4 interface - Issue - Root cause & Solution 2320357

Issue Analysis

Issue

The BI4 system has not received master data of material group Z11-40044 from BW system(WBP). BI4 team has even provided the sales orders list for reference.

Source	GBU	Comm. Prd / Material Group	Order Line	Order Line Creation date	Order line	
					QTY (PUQ)	Gross value (CP)
					TO	EUR
PF1 Client 020	SD	SODA-ASH Z11-40044	ALVE-ONE 1 608626/10	08.03.2018	0,6	0,0
PF1 Client 020	SD	SODA-ASH Z11-40044	ALVE-ONE 1 608782/10	19.03.2018	0,3	0,0
PF1 Client 020	SD	SODA-ASH Z11-40044	ALVE-ONE 1 4953620/10	28.02.2018	0,3	1 170,0
PF1 Client 020	SD	SODA-ASH Z11-40044	ALVE-ONE 1 4959470/10	08.03.2018	0,3	1 350,0
PF1 Client 020	SD	SODA-ASH Z11-40044	ALVE-ONE 1 4959470/20	09.03.2018	0,3	1 350,0

Analysis

In WBP system(BW), the sales DSO's(DBSDSOT1, DPDSO02) doesn't contain any data related to the material group 'Z11-40044'. So we checked in the PF1 system – The sales item data is stored in VBAP table. Found no entries for the material group 'Z11-40044'.

Data Browser: Table VBAP: Selection Screen

Number of Entries

Sales Document: [] to []

Item: [] to []

Material: [] to []

Material Group: **Z11-40044** to []

Item category: []

RejectionReason: []

Overdeliv. Tol.: []

Underdel. Tol.: []

Division: []

Plant: []

Route: []

Created on: []

Width of Output List: 250

Maximum No. of Hits: 200

Display Number of Entries

Number of entries which meet the selection criteria:

0

Close

Cross checked if the master data of the material group 'Z11-40044' and found the details as shown in the below screen shots.

Data Browser: Table T023 Select Entries 1

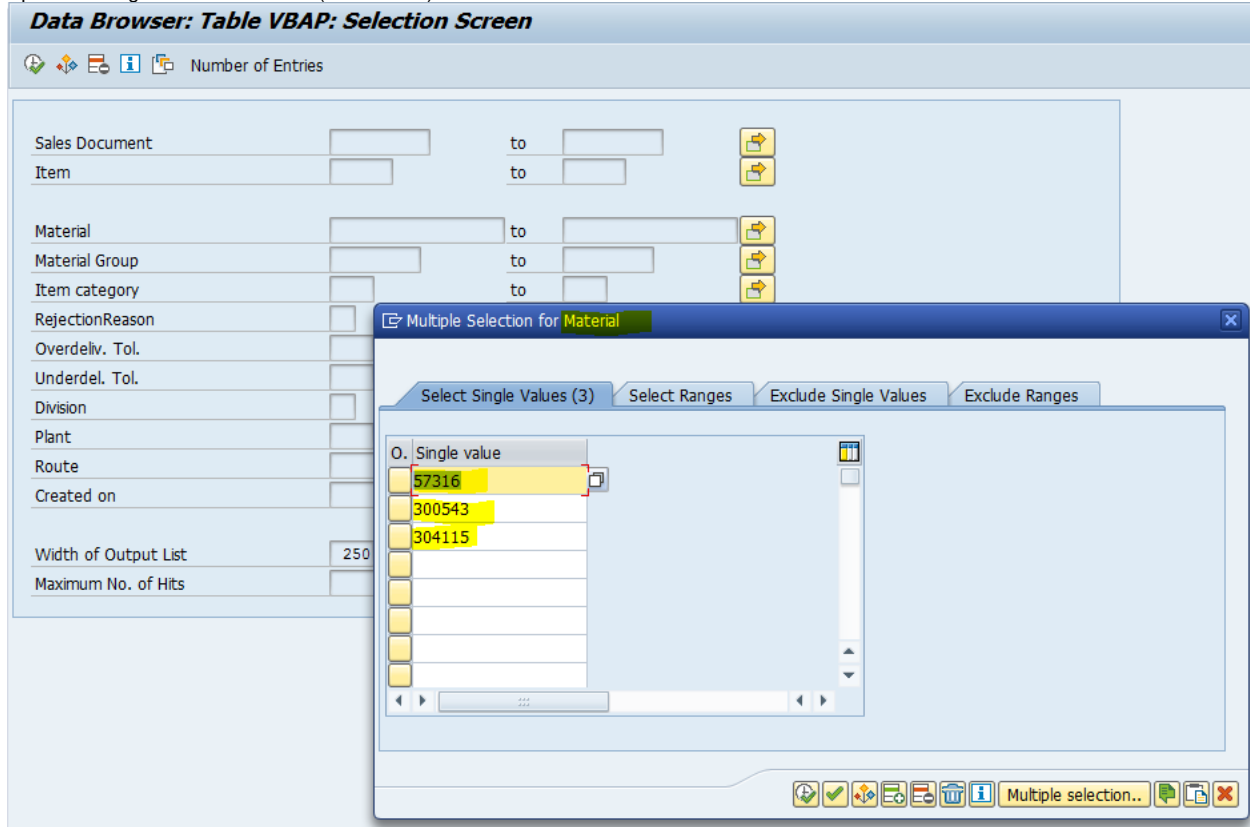
Cl.	Matl Group	Dv	LRf	MG ref. matl	MG material	Department	AGrp	DUW	NCM Code	ValCl	PV key	Class	Scenario	Price Level Group	Material Group Desc.
020	Z11-40044														ALVE-ONE 1

The material group 'Z11-40044' contains 3 materials as shown in the screen shot.

Data Browser: Table MARA Select Entries 3

Cl.	Matl Group	Material	Created	Created by	Last Chg	Changed by	Material Description	Material description	Material long text
020	Z11-40044	0000000000000057316	17.11.2017	BATCHCLSES	05.09.2018	R_MPG100_MD	ALVE-ONE DEVT 1	ALVE-ONE DEVT 1	ALVE-ONE DEVT 1 BULK
020	Z11-40044	000000000000300543	12.12.2017	R_MPG100_MD	06.09.2018	R_MPG100_MD	ALVE-ONE DEVT 1 S20	ALVE-ONE DEVT 1 S20	ALVE-ONE DEVT 1 IN 20 KG BAGS
020	Z11-40044	000000000000304115	12.06.2018	R_MPG100_MD	06.09.2018	R_MPG100_MD	ALVE-ONE DEVT 1 S25	ALVE-ONE DEVT 1 S25	ALVE-ONE DEVT 1 IN 25 KG BAGS

Upon checking the sales item data (VBAP table) with reference to the material in above screen shot.



Found that the mapping of material group was wrong. Ideally the material '300543' belongs to 'Z11-40044' however it has mapped to the material group 'Z11-39442'.

Data Browser: Table VBAP Select Entries 7

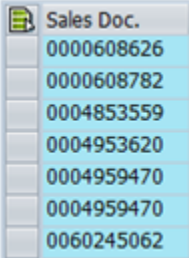
Sales Doc.	Item	Material	Description	Matl Group	Created on	Created by	Chngd on
0000608626	10	000000000000300543	ALVE-ONE DEVT 1 S20	Z11-39442	08.03.2018	BE015729	19.03.2018
0000608782	10	000000000000300543	ALVE-ONE DEVT 1 S20	Z11-39442	19.03.2018	BE05113	19.03.2018
0004853559	20	000000000000300543	ALVE-ONE DEVT 1 S20	Z11-39442	12.12.2017	BE09119	19.02.2018
0004953620	10	000000000000300543	ALVE-ONE DEVT 1 S20	Z11-39442	28.02.2018	BE015729	06.03.2018
0004959470	10	000000000000300543	ALVE-ONE DEVT 1 S20	Z11-39442	08.03.2018	BE015729	26.03.2018
0004959470	20	000000000000300543	ALVE-ONE DEVT 1 S20	Z11-39442	09.03.2018	BE016224	26.03.2018
0060245062	21	000000000000300543	ALVE-ONE DEVT 1 S20	Z11-39442	27.04.2018	BE05113	27.04.2018

Root cause

This issue has popped up as the material group data was not correctly mapped to the material '300543' in PF1 system. For details check analysis section.

Solution

Raised this issue to OTC team and the data corrected and after that BW teams has to selectively load the data related to the specified orders as mentioned in the below screenshot and then generate the file.



Sales Doc.
0000608626
0000608782
0004853559
0004953620
0004959470
0004959470
0004959470
0060245062