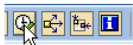
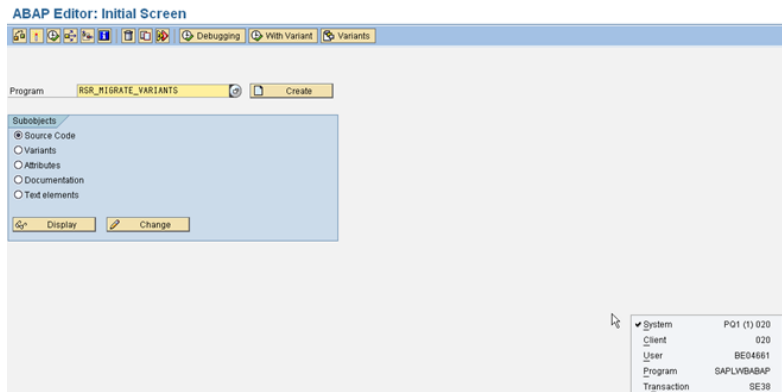
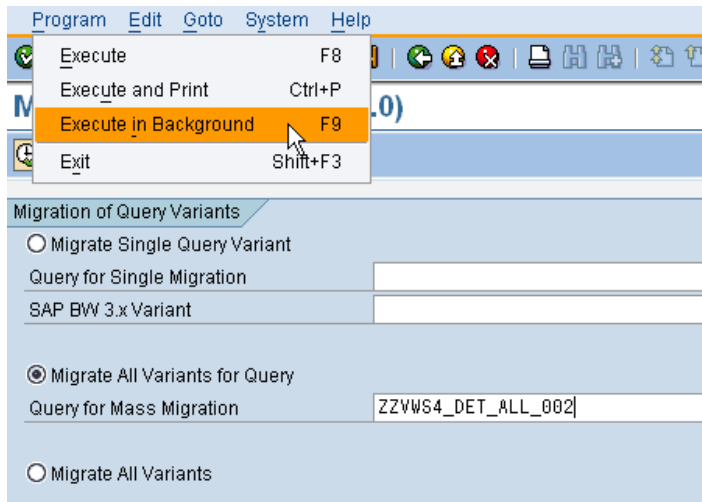


How to Converse Variants

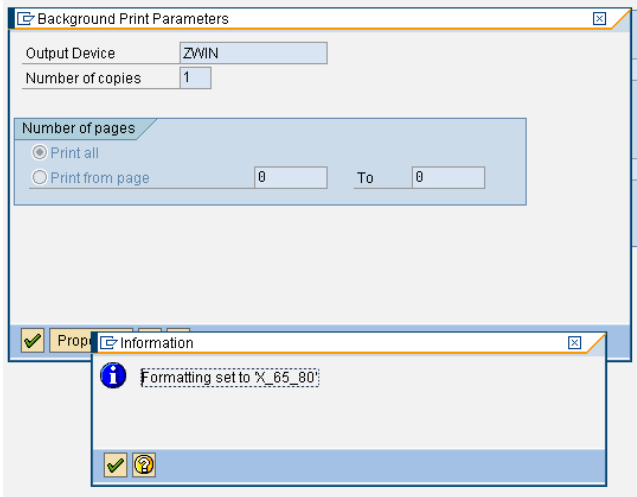
1. SE38 : RSR_MIGRATE_VARIANTS



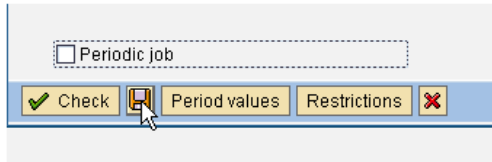
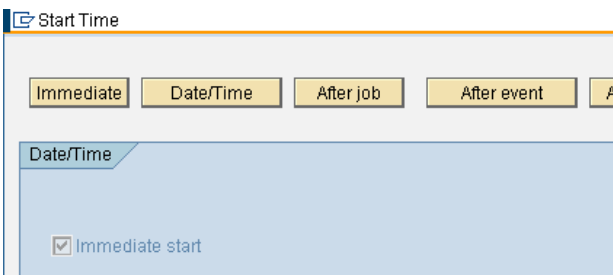
2. Enter the technical name of the query and tick Migrate All variants for Query and press F9 or Program > Execute in Background



3. Enter ZWIN in Output Device then confirm 2 x



4. Click on Immediate and save



You can check with sm37 ... If the job are cancelled it is probably due to the fact that there was no variants for the selected query !!!!