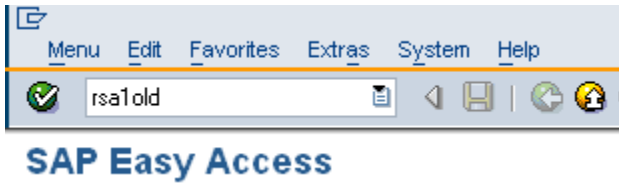


# How to remove PSA and Changelog

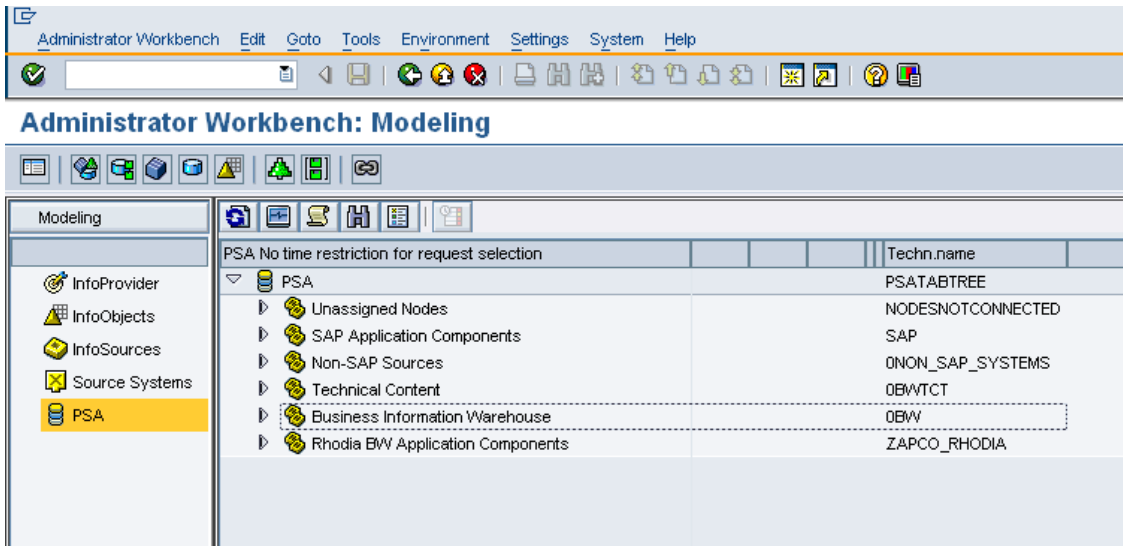
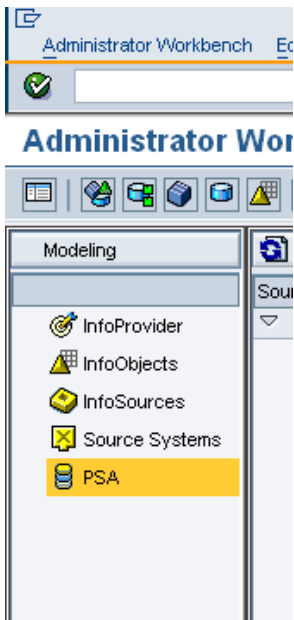
- List of existing PSA
- How to remove PSA and ChangeLog not well managed
  - Delete one ChangeLog:
  - Delete all the changeLog
- Add the appropriate process in the process chain

## List of existing PSA

To build the list of existing PSA, I use the RSA1OLD transaction in order to have access to all the PSA



Then click on PSA



The list of datasources will appear and with the search button, using the keyword « REQU\_ » and « ODSR », it is easy to have respectively the PSA and the Change Log.

Find  in Directory PSA

Search for  Find  
 in Technical Name  
 in the Description

Search Result

Ty	Name	Search Directory	Technical Name	Data Type
	Appropriation Request - Master Data	PSA\SAP Application Components\SAP R/3 40	APPR_REQU_ATTR	Info
	Appropriation Request - Texts	PSA\SAP Application Components\SAP R/3 40	APPR_REQU_TEXT	Info
	DCO_OM_CCA_9 - delta (04.11.2009...)	Controlling\Overhead Cost Controlling\Cos	REQU_4FPPS04KUM	Rec
	DCO_OM_CCA_9 - delta (05.11.2009...)	Controlling\Overhead Cost Controlling\Cos	REQU_4FQ8JWICQW	Rec
	DCO_OM_CCA_9 - delta (06.11.2009...)	Controlling\Overhead Cost Controlling\Cos	REQU_4FQH2KM2XV	Rec
	DCO_OM_CCA_9 - delta (09.11.2009...)	Controlling\Overhead Cost Controlling\Cos	REQU_4FS15C6NBM	Rec
	DCO_OM_CCA_9 - delta (10.11.2009...)	Controlling\Overhead Cost Controlling\Cos	REQU_4FS1T3L908	Rec
	DCO_OM_CCA_9 - delta (11.11.2009...)	Controlling\Overhead Cost Controlling\Cos	REQU_4FSQIXNIHB	Rec
	DCO_OM_CCA_9 - delta (12.11.2009...)	Controlling\Overhead Cost Controlling\Cos	REQU_4FSTL46LK1	Rec
	DCO_OM_CCA_9 - delta (13.11.2009...)	Controlling\Overhead Cost Controlling\Cos	REQU_4FT6QMKYUB	Rec
	DCO_OM_CCA_9 - delta (16.11.2009...)	Controlling\Overhead Cost Controlling\Cos	REQU_4FUNAYH014	Rec
	DCO_OM_CCA_9 - delta (17.11.2009...)	Controlling\Overhead Cost Controlling\Cos	REQU_4FV3GTHYGM	Rec
	DCO_OM_CCA_9 - delta (09.11.2009...)	Controlling\Overhead Cost Controlling\Cos	REQU_6561958WEM	Rec
	DCO_OM_CCA_9 - Acetow - Delta (0...)	Controlling\Overhead Cost Controlling\Cos	REQU_4FPYDDYU46	Rec
	DCO_OM_CCA_9 - Acetow - Delta (0...)	Controlling\Overhead Cost Controlling\Cos	REQU_4FQCH393BE	Rec
	DCO_OM_CCA_9 - Acetow - Delta (0...)	Controlling\Overhead Cost Controlling\Cos	REQU_4FRXH0FF8V	Rec
	DCO_OM_CCA_9 - Acetow - Delta (1...)	Controlling\Overhead Cost Controlling\Cos	REQU_4FS17ENEE1	Rec

Position

Find  in Directory PSA

Search for  Find  
 in Technical Name  
 in the Description

Search Result

Ty	Name	Search Directory	Technical Name	Data Type
	(17.11.2009)	PSA\Rhodia BW Application Components\Purchasing\Purc	ODSR_4FV47AMU1J	Request
	(18.11.2009)	PSA\Rhodia BW Application Components\Purchasing\Purc	ODSR_4FVGSEBH64	Request
	(17.11.2009)	PSA\Rhodia BW Application Components\Purchasing\Purc	ODSR_4FV40CZK7V	Request
	(18.11.2009)	PSA\Rhodia BW Application Components\Purchasing\Purc	ODSR_4FVGQVHSI0	Request
	(18.11.2009)	PSA\Unassigned Nodes\DM\AP Optimization - Global Sour	ODSR_4FVHP15RWH	Request
	(18.11.2009)	PSA\Unassigned Nodes\DM\AP Optimization - Global Sour	ODSR_4FVH09F6UK	Request
	(18.11.2009)	PSA\Unassigned Nodes\DM\AP Optimization - Payment\Bill	ODSR_4FVHDZ08AX	Request
	(01.07.2009)	PSA\Unassigned Nodes\DM\AP Optimization - Suppliers E	ODSR_48PFYRRAE9	Request
	(18.11.2009)	PSA\Unassigned Nodes\DM\AP Optimization - Transportat	ODSR_4FVGH37P7E	Request
	(18.11.2009)	PSA\Unassigned Nodes\DM\AP Sales: Account Receivabl	ODSR_4FVHK1ACNZ	Request
	(18.11.2009)	PSA\Unassigned Nodes\DM\AP Sales: Inventory Managem	ODSR_4FVHD7GTXM	Request
	(06.11.2009)	PSA\Unassigned Nodes\DM\CCR: Product Cost Items\8OD	ODSR_5IUBAL6MRU	Request
	(18.11.2009)	PSA\Unassigned Nodes\DM\CDSA calculation (current org	ODSR_4FV675ZL96	Request
	(18.11.2009)	PSA\Unassigned Nodes\DM\CDSA calculation (current org	ODSR_4FV6DA0MJC	Request
	(18.11.2009)	PSA\Unassigned Nodes\DM\Conditions of purchase\8ODS	ODSR_4FVGKEX15N	Request
	(18.11.2009)	PSA\Unassigned Nodes\DM\Conditions of purchase\8ODS	ODSR_4FVGKF4POM	Request
	(05.11.2009)	PSA\Unassigned Nodes\DM\Consignment Withdrawals\8C	ODSR_4FQANNEK8Z	Request

Position

Double-click on one row in order to have the detail needed to fill the Excel file.

Overhead Cost Controlling	ZAPCO_F_COOM
Cost Center Accounting	ZAPCO_F_COOMCCA
Cost Centers: Actual Costs Through Delta Extraction	IFS_DCO_OM_CCA_9
WPI Client 400	OCO_OM_CCA_9_VA
OCO_OM_CCA_9 - delta (17.11.2009)	REQU_4FV3GTHYGMAB4T1668MA4QVXO
OCO_OM_CCA_9 - delta (16.11.2009)	REQU_4FUNAYHOI44KJ9ZH1B18DHB8S
OCO_OM_CCA_9 - delta (13.11.2009)	REQU_4FT6GMKYUB121RW1E93ZT63HO
OCO_OM_CCA_9 - delta (12.11.2009)	REQU_4FSTL4GLK1E97X5AW5F9YWG8C
OCO_OM_CCA_9 - delta (11.11.2009)	REQU_4FSQIXNIHB2MNVGBZHGN7LM4
OCO_OM_CCA_9 - delta (10.11.2009)	REQU_4FS1T3L90804VW665XOCL19A24
OCO_OM_CCA_9 - delta (09.11.2009)	REQU_4FS15C6NBMSLZM39WZDOSXK4S
OCO_OM_CCA_9 - delta (09.11.2009)	REQU_65G1958WEMEKWT8277ZP4I91W
OCO_OM_CCA_9 - delta (06.11.2009)	REQU_4FGH2KM2XV80X8A7T2GTT94J0
OCO_OM_CCA_9 - delta (05.11.2009)	REQU_4FQ0WMCQWUM2RHCA7DJZFHO
OCO_OM_CCA_9 - delta (04.11.2009)	REQU_4FPSS04KUMQHSTMD1R5KFZAR0

Source	Target	Datasource	PSA Name	ChangeLog Name	Target is source	Existing lib of days for PSA	Existing lib of days for ChangeLog	lib of days for PSA needed	lib of days for ChangeLog needed	Condition to remove a PS
OCO_OM_CCA_9	ODS_CCA9	OCO_OM_CCA_9	OCO_OM_CCA_9_VA	8ODS_CCA9_VA	Yes	10				Be sure that the data are well lo

## How to remove PSA and ChangeLog not well managed

Two ways to remove ChangeLog:

Delete one ChangeLog:

ODS - Variable Costs - Aggregation for VS calculation	8ODS_CPV0
WBP (BWV Production) - Client 400	8ODS_CPV0_VA
(18.11.2009)	ODSR_4FVH309ID9IPKA4YZKC
(17.11.2009)	ODSR_BBF0RGA4CDYPK0UC2
(16.11.2009)	ODSR_4FUPSSD8SJHVL7GHBI
(16.11.2009)	ODSR_0MUPKS5TW9G9MCH1V
(13.11.2009)	ODSR_1J5L7RTPXDHY5NHCNC
(12.11.2009)	ODSR_8QR7RFMF86LWZ1Y6ZJ
(11.11.2009)	ODSR_9NYRLJAVH7PNW66V5
(10.11.2009)	ODSR_4FSD6CRG97EKEVWLH9.
(09.11.2009)	ODSR_4FS1RW28VWGJ5QHWR1

Delete all the changeLog

ODS - Variable Costs - Aggregation for VS calculation		80DS_CPV0
WBP (BWP)		80DS_CPV0_VA
(18.11.2009)		ODSR_4FVH309ID9IPKA4YZKGLL
(17.11.2009)		ODSR_BBF0RGA4CDYPK0UC2KOF

**Edit Several Requests...**  
**Delete Change Log Data...**

## Deletion of Change Log Data

Change Log of DataStore Object:

Number of Requests in Change Log DB Table:

**Deletion of All Requests**

Older than  Days  
 Before  (Date)

Only Successfully Booked/Updated Requests  
 Only those requests with errors that are not posted to a data target

Job Name:

Two ways to delete the PSA:

- Delete one PSA:

Cost Center Accounting		ZAPCO_F_CUUMCCA
Cost Centers: Actual Costs Through Delta Extraction		IFS_OCO_OM_CCA_9
WBP1 Client 400		OCO_OM_CCA_9_VA
OCO_OM_CCA_9 - delta (18.11.2009)		REQU_0M2WBH4G9SBKT1DZSRYFC0U
OCO_OM_CCA_9 - delta (17.11.2009)		REQU_4FV3GTHYGMAB4T1668MA4QV)
OCO_OM_CCA_9 - delta (16.11.2009)		REQU_4FUNAYHOI44KJ9ZH1B18DHB8S

- Delete all PSA:

Cost Center Accounting		
Cost Centers: Actual Costs Through Delta Extraction		
WBP1 Client 400		
OCO_OM_CCA_9 - delta (16.11.2009)		

**Edit Several Requests...**  
**Delete PSA Data...**  
 Generate Export DataSource

## Deletion of PSA Data

Deletion of PSA Data			
Cost Centers: Actual Costs - Line Items (Del	0CO_OM_CCA_9	WP1 Client 400	WP1_400

Selected PSA Table

DataSource	Cost Centers: Actual Costs - Line Items (Del 0CO_OM_CCA_9		
Source System	WP1 Client 400	WP1_400	
Number of Requests in PSA DB Table	11		

Deletion of All Requests

Older than  Days

Before  (Date)

Only Successfully Booked/Updated Requests

Only those requests with errors that are not posted to a data target

Start Conditions      Subsequent Processing

Job Name

Start   Jobs   Logs   Refresh   Stop

All PSA Deletion Jobs

Add the appropriate process in the process chain

The appropriate process are:

- Deletion of Requests from PSA
- Deletion of Requests from the Change Log