

# How to list variants

Variants are group of selection that user can save it on each query. However, once a user save it, it can be used by all users .

To list the available variants of a query:

1. Go to table RSRREPDIR --> enter query name or info cube name. For example, query name = ZCCA\_C11\_SIS\_ALL\_COSTLISTPA

**Data Browser: Table RSRREPDIR: Selection Screen**

Number of Entries

ID	<input type="text"/>	to	<input type="text"/>	<input type="button" value="↕"/>
Version	<input type="text"/>	to	<input type="text"/>	<input type="button" value="↕"/>
InfoCube	<input type="text"/>	to	<input type="text"/>	<input type="button" value="↕"/>
Query	ZCCA_C11_SIS_ALL_COSTL...	to	<input type="text"/>	<input type="button" value="↕"/>
Type of a reporting component	<input type="text"/>	to	<input type="text"/>	<input type="button" value="↕"/>
Query	<input type="text"/>	to	<input type="text"/>	<input type="button" value="↕"/>
Object Status	<input type="text"/>	to	<input type="text"/>	<input type="button" value="↕"/>
Read Mode	<input type="text"/>	to	<input type="text"/>	<input type="button" value="↕"/>
Width of Output List	<input type="text" value="250"/>			
Maximum No. of Hits	<input type="text" value="200"/>			

2. The result will be display as picture below and copy the field "COMPUID"

**Data Browser: Table RSRREPDIR Select Entries 1**

Check Table...

COMPUID	V	InfoCube	Query	COMPTY...	Query	RFCSUPPORT
4GJ72SH25QM1LJMSGAV4Q77ZR	A	OCCA_C11	4GJ72TBS9L0VO1SL3N4HUF2UV	REP	ZCCA_C11_SIS_ALL_COSTLISTPA	X

3. Go to table RSRREPDIR and paste RSRREPDIS-COMPUID to field ID of table RSRVARIANT

**Data Browser: Table RSRVARIANT: Selection Screen**

Number of Entries

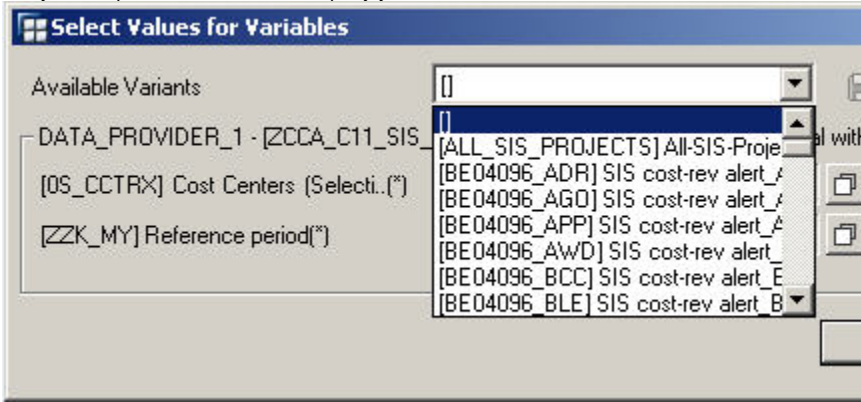
ID	4GJ72SH25QM1LJMSGAV4Q...	to	<input type="text"/>	<input type="button" value="↕"/>
Variant	<input type="text"/>	to	<input type="text"/>	<input type="button" value="↕"/>
Number	<input type="text"/>	to	<input type="text"/>	<input type="button" value="↕"/>
Variable Name	<input type="text"/>	to	<input type="text"/>	<input type="button" value="↕"/>
Boolean	<input type="text"/>	to	<input type="text"/>	<input type="button" value="↕"/>
Boolean	<input type="text"/>	to	<input type="text"/>	<input type="button" value="↕"/>
Boolean	<input type="text"/>	to	<input type="text"/>	<input type="button" value="↕"/>
SIGN	<input type="text"/>	to	<input type="text"/>	<input type="button" value="↕"/>
Operator	<input type="text"/>	to	<input type="text"/>	<input type="button" value="↕"/>
Internal char. value	<input type="text"/>	to	<input type="text"/>	<input type="button" value="↕"/>
Internal char. value	<input type="text"/>	to	<input type="text"/>	<input type="button" value="↕"/>
Width of Output List	<input type="text" value="250"/>			
Maximum No. of Hits	<input type="text" value="200"/>			

4. Click execute, you will get all the variants that available for that queries.

**Data Browser: Table RSRVARIANT Select Entries 200**

COMPUID	Variant	Number	Variable Name	Boolean	Boolean	Boolean	SI...	Ope...	Internal Cha...	Internal...
4GJ72SH25QM1LJMSGAV4Q77ZR	BE04096_ADR	1	OS_CCTR_X				I	EQ	IS16102063	
4GJ72SH25QM1LJMSGAV4Q77ZR	BE04096_ADR	2	ZZK_MY			X				
4GJ72SH25QM1LJMSGAV4Q77ZR	BE04096_AGO	1	OS_CCTR_X				I	EQ	I916102565	
4GJ72SH25QM1LJMSGAV4Q77ZR	BE04096_AGO	2	ZZK_MY			X				
4GJ72SH25QM1LJMSGAV4Q77ZR	BE04096_ALV	1	OS_CCTR_X				I	EQ	IS16102700	
4GJ72SH25QM1LJMSGAV4Q77ZR	BE04096_ALV	2	OS_CCTR_X				I	EQ	IS16102701	
4GJ72SH25QM1LJMSGAV4Q77ZR	BE04096_ALV	3	OS_CCTR_X				I	EQ	IS16102702	
4GJ72SH25QM1LJMSGAV4Q77ZR	BE04096_ALV	4	ZZK_MY			X				
4GJ72SH25QM1LJMSGAV4Q77ZR	BE04096_APP	1	OS_CCTR_X				I	EQ	IS16102021	
4GJ72SH25QM1LJMSGAV4Q77ZR	BE04096_APP	2	OS_CCTR_X				I	EQ	IS16102094	
4GJ72SH25QM1LJMSGAV4Q77ZR	BE04096_APP	3	OS_CCTR_X				I	EQ	IS16102170	
4GJ72SH25QM1LJMSGAV4Q77ZR	BE04096_APP	4	ZZK_MY			X				
4GJ72SH25QM1LJMSGAV4Q77ZR	BE04096_AWD	1	OS_CCTR_X				I	EQ	IS16102016	
4GJ72SH25QM1LJMSGAV4Q77ZR	BE04096_AWD	2	OS_CCTR_X				I	EQ	IS16102110	

5. If you compare with variant in the query you will see it matched.



**Note:**

If you want to see who create and change the variant, you can see it at table RSRVARIANTDIR

**Data Browser: Table RSRVARIANTDIR Select Entries 74**

COMPUID	Variant	Stat	Content rel.	Content Time Sta...	Responsible	BW Appl.	Last changed	TIMESTMP	Long Description
4GJ72SH25QM1LJMSGAV4Q77ZR	BE04096_ADR	ACT			0 BE07881		BE07881	20,100,211,141,420	SIS cost-rev alert_ADR
4GJ72SH25QM1LJMSGAV4Q77ZR	BE04096_AGO	ACT			0 BE07881		BE07881	20,100,212,142,800	SIS cost-rev alert_AGO
4GJ72SH25QM1LJMSGAV4Q77ZR	BE04096_ALV	ACT			0 BE07881		BE07881	20,100,212,144,840	SIS cost-rev alert_ALV
4GJ72SH25QM1LJMSGAV4Q77ZR	BE04096_APP	ACT			0 BE07881		BE07881	20,100,212,141,057	SIS cost-rev alert_APP
4GJ72SH25QM1LJMSGAV4Q77ZR	BE04096_AWD	ACT			0 BE07881		BE07881	20,100,212,145,528	SIS cost-rev alert_AWD
4GJ72SH25QM1LJMSGAV4Q77ZR	BE04096_BCC	ACT			0 BE07881		BE07881	20,100,211,135,703	SIS cost-rev alert_BCC
4GJ72SH25QM1LJMSGAV4Q77ZR	BE04096_BLE	ACT			0 BE07881		BE07881	20,100,212,140,619	SIS cost-rev alert_BLE
4GJ72SH25QM1LJMSGAV4Q77ZR	BE04096_BSE	ACT			0 BE07881		BE07881	20,100,212,144,716	SIS cost-rev alert_BSE
4GJ72SH25QM1LJMSGAV4Q77ZR	BE04096_CUS	ACT			0 BE07881		BE07881	20,100,212,150,311	SIS cost-rev alert_CUS
4GJ72SH25QM1LJMSGAV4Q77ZR	BE04096_DOE	ACT			0 BE07881		BE07881	20,100,211,141,455	SIS cost-rev alert_DOE

If you want to see description of the variant, you can see at table RSRVARIANTTXT

**Data Browser: Table RSRVARIANTTXT Select Entries 74**

Langua...	COMPUID	Variant	Long Description
E	4GJ72SH25QM1LJMSGAV4Q77ZR	BE04096_ADR	SIS cost-rev alert_ADR
E	4GJ72SH25QM1LJMSGAV4Q77ZR	BE04096_AGO	SIS cost-rev alert_AGO
E	4GJ72SH25QM1LJMSGAV4Q77ZR	BE04096_ALV	SIS cost-rev alert_ALV
E	4GJ72SH25QM1LJMSGAV4Q77ZR	BE04096_APP	SIS cost-rev alert_APP
E	4GJ72SH25QM1LJMSGAV4Q77ZR	BE04096_AWD	SIS cost-rev alert_AWD
E	4GJ72SH25QM1LJMSGAV4Q77ZR	BE04096_BCC	SIS cost-rev alert_BCC