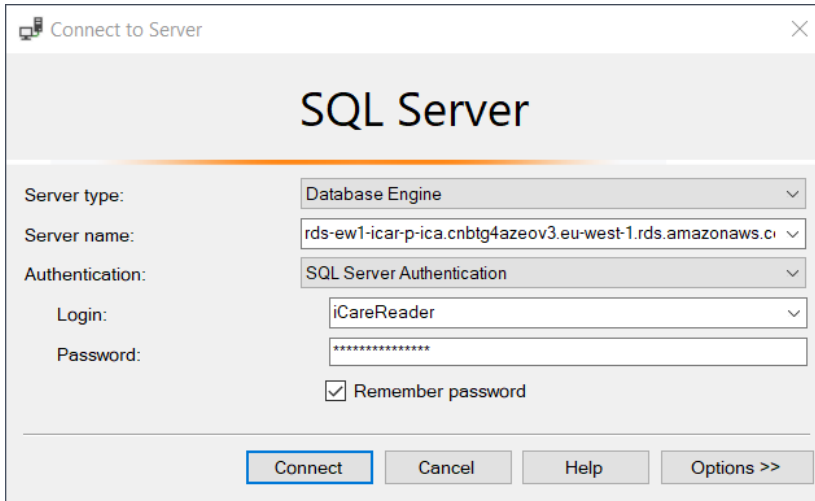
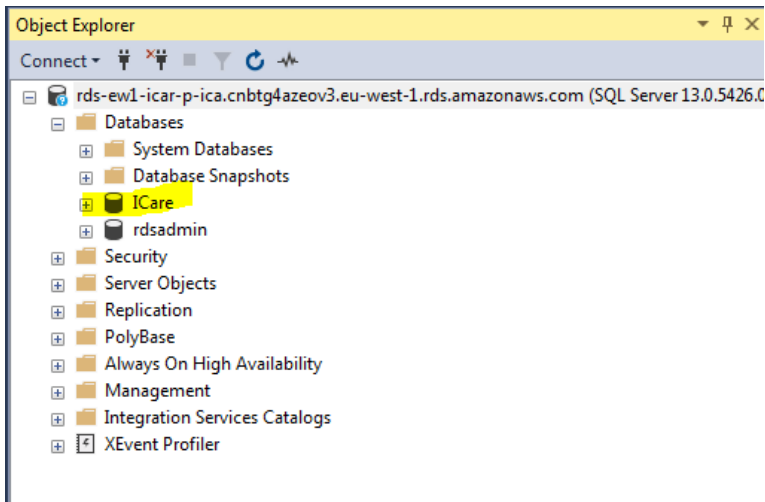


# zzz ICARE (HR)

Since 12.2020 , the ICP Oracle database has been decommissioned and has been migrated to AWS.



Server name: [rds-ew1-icar-p-ica.cnbtg4azeov3.eu-west-1.rds.amazonaws.com](#)  
Login : iCareReader



The contact is still **Saints ZHANG** (Shanghai)

SQLQuery2.sql - rds...(iCareReader (64))\*    SQLQuery1.sql - rds...(iCareReader (65))\*

```

SELECT SUBSTRING(PAY.D_YEAR_MONTH,1,4) AS PAY_YEAR,
       PAY.C_PERSONAL_NUMBER,
       PER.L_LAST_NAME,
       PER.L_FIRST_NAME,
       PAY.C_CURRENCY,
       SUM(PAY.N_GROSS_SALARY) AS GROSS_SALARY
FROM ADP_PAY_RESULT_AGGR AS PAY,ADP_PERSONAL_DATA AS PER

WHERE PAY.C_PERSONAL_NUMBER=PER.C_PERSONAL_NUMBER AND PAY.C_PERSONAL_NUMBER IN ('████████', '████████')
      AND PAY.C_TYPE = '2' AND PAY.C_SOURCE = 'GV'
GROUP BY SUBSTRING(PAY.D_YEAR_MONTH,1,4),PAY.C_PERSONAL_NUMBER,PER.L_LAST_NAME,PER.L_FIRST_NAME,PAY.C_CURRENCY;

```

100 %

Results Messages


	PAY_YEAR	C_PERSONAL_NUMBER	L_LAST_NAME	L_FIRST_NAME	C_CURRENCY	GROSS_SALARY
1	2010	01111261	Hillig	Rita	EUR	████████
2	2011	01111261	Hillig	Rita	EUR	████████
3	2011	79005825	HILLIG	Rita	EUR	████████
4	2012	79005825	HILLIG	Rita	EUR	████████
5	2013	79005825	HILLIG	Rita	EUR	████████
6	2014	79005825	HILLIG	Rita	EUR	████████

Personal information (Id of an employee) : ADP\_PERSONAL\_DATA(L\_LAST\_NAME,L\_FIRST\_NAME)

C\_SOURCE = source system, we use mainly GV ( ADP Global View)  
 C\_TYPE = type of data: Original(1) or Fixed ( 2)

**ICARE BI4 application is no more used .**

It is replaced by the BW HR application

 **Philipp, Arne**  
 À Francesco, moi, Bernard, Saints, Christophe, CheeKeong, Sylvie ▼

The dismantlement of the **iCare Oracle database** is planned by IBM to be done between 8 and 12 of February.  
Reference: CH20224574 / SOLW-REQ-000437 Wintel - SALTO - decomm "ICP" on ux7db - 1erPilotage databases - part 3

In [this file](#) all the detailed SQL for each object.

In [this file](#) new tables' joins

The [diagram](#) of the universe

List of available objects in ICARE :